

Oklahoma Corporation Commission
Oil & Gas Conservation Division
Post Office Box 52000
Oklahoma City, Oklahoma 73152-2000
Rule 165: 10-3-25

Form 1002A

API No.: 35095206690000

Completion Report

Spud Date: January 31, 2019

OTC Prod. Unit No.:

Drilling Finished Date: April 02, 2019

1st Prod Date:

Completion Date: September 02, 2019

Drill Type: HORIZONTAL HOLE

Well Name: HOLLY 3-34H27X22

Purchaser/Measurer:

Location: MARSHALL 34 4S 5E
NW NW NE NE
250 FNL 1118 FEL of 1/4 SEC
Latitude: 34.171444 Longitude: -96.761885
Derrick Elevation: 0 Ground Elevation: 796

First Sales Date:

Operator: XTO ENERGY INC 21003

22777 SPRINGWOODS VILLAGE PKWY
SPRING, TX 77389-1425

Completion Type	
X	Single Zone
	Multiple Zone
	Commingled

Location Exception
Order No
692791

Increased Density
Order No
689865
689866

Casing and Cement							
Type	Size	Weight	Grade	Feet	PSI	SAX	Top of CMT
CONDUCTOR	20	169	J-55	103			SURFACE
SURFACE	13 3/8	54.50	J-55	1962		855	SURFACE
PRODUCTION	5 1/2	20, 23	P-110	18385		1715	3445

Liner								
Type	Size	Weight	Grade	Length	PSI	SAX	Top Depth	Bottom Depth
There are no Liner records to display.								

Total Depth: 18385

Packer	
Depth	Brand & Type
There are no Packer records to display.	

Plug	
Depth	Plug Type
There are no Plug records to display.	

Initial Test Data

Test Date	Formation	Oil BBL/Day	Oil-Gravity (API)	Gas MCF/Day	Gas-Oil Ratio Cu FT/BBL	Water BBL/Day	Pumpin or Flowing	Initial Shut- In Pressure	Choke Size	Flow Tubing Pressure
-----------	-----------	----------------	----------------------	----------------	----------------------------	------------------	----------------------	---------------------------------	---------------	-------------------------

There are no Initial Data records to display.

Completion and Test Data by Producing Formation

Formation Name: WOODFORD Code: 319WDFD Class: TA

Spacing Orders		Perforated Intervals	
Order No	Unit Size	From	To
558774	640	7910	18251
583819	640		
692790	MULTIUNIT		
Acid Volumes		Fracture Treatments	
4,000 GALLONS		38 STAGES - 534,777 BARRELS TREATED WATER, 1,368,100 POUNDS 100 MESH SAND, 10,956,280 POUNDS 40/70 SAND, 3,047,820 POUNDS CRC SAND	

Formation	Top
WOODFORD	7573

Were open hole logs run? No

Date last log run:

Were unusual drilling circumstances encountered? No

Explanation:

Other Remarks
IRREGULAR SECTION. WAITING ON OFFSET WELLS TO BE COMPLETED BEFORE PRODUCING. OCC - THE OPERATOR WILL FILE AN AMENDED 1002A SHOWING THE INITIAL TEST WHEN THE WELL GOES ON PRODUCTION.

Lateral Holes
Sec: 22 TWP: 4S RGE: 2E County: MARSHALL NW NW NW NE 68 FNL 2565 FEL of 1/4 SEC Depth of Deviation: 7249 Radius of Turn: 411 Direction: 360 Total Length: 10846 Measured Total Depth: 18385 True Vertical Depth: 5842 End Pt. Location From Release, Unit or Property Line: 68

FOR COMMISSION USE ONLY
<div>Status: Accepted</div> <div>1143971</div>

PLEASE TYPE OR USE BLACK INK ONLY

FORMATION RECORD

Give formation names and tops, if available, or descriptions and thickness of formations drilled through. Show intervals cored or drillstem tested.

LEASE NAME Holly

WELL NO. 3-24H27X22

NAMES OF FORMATIONS	TOP
Woodford	7573

Pec Debbie Wagoner

FOR COMMISSION USE ONLY

ITD on file ☐ YES ☐ NO

APPROVED _____ DISAPPROVED _____

2) Reject Codes _____

Were open hole logs run? _____ yes ☒ no

Date Last log was run _____

Was CO₂ encountered? _____ yes ☒ no at what depths? _____

Was H₂S encountered? _____ yes ☒ no at what depths? _____

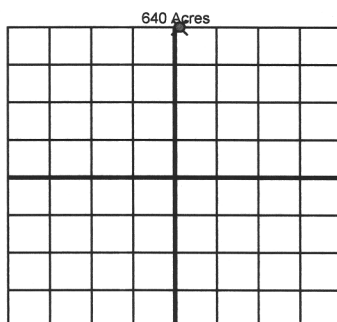
Were unusual drilling circumstances encountered? _____ yes ☒ no

If yes, briefly explain below _____

Pec Debbie Wagoner

Other remarks: Irregular Section

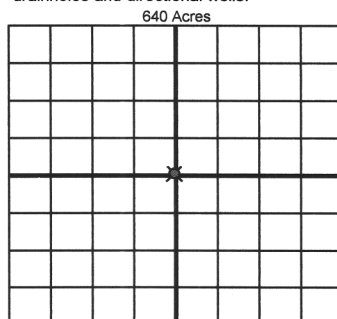
Waiting on offset wells to be completed before producing.



If more than three drainholes are proposed, attach a separate sheet indicating the necessary information.

Direction must be stated in degrees azimuth. Please note, the horizontal drainhole and its end point must be located within the boundaries of the lease or spacing unit.

Directional surveys are required for all drainholes and directional wells.



BOTTOM HOLE LOCATION FOR DIRECTIONAL HOLE

SEC	TWP	RGE	COUNTY
Spot Location	1/4	1/4	1/4
Measured Total Depth	True Vertical Depth		BHL From Lease, Unit, or Property Line:

BOTTOM HOLE LOCATION FOR HORIZONTAL HOLE: (LATERALS)

LATERAL #1

SEC	TWP	RGE	COUNTY
22	4S	2E	Marshall
Spot Location	NW 1/4	NW 1/4	NE 1/4
Depth of Deviation	7,249	Radius of Turn	411
Measured Total Depth	18,385	True Vertical Depth	5,842
Direction	360 352	Total Length	10,846
BHL From Lease, Unit, or Property Line: 68 FNL & 2565 FEL			

LATERAL #2

EXTERNAL #2					
SEC	TWP	RGE	COUNTY		
Spot Location			Feet From 1/4 Sec Lines		FSL
1/4		1/4	1/4	1/4	FWL
Depth of Deviation		Radius of Turn	Direction		Total Length
Measured Total Depth		True Vertical Depth		BHL From Lease, Unit, or Property Line:	

LATERAL #3

EXTERNAL INFO							
SEC	TWP	RGE	COUNTY				
Spot Location				Feet From 1/4 Sec Lines	FSL		FWL
1/4		1/4	1/4	1/4			
Depth of Deviation		Radius of Turn		Direction		Total Length	
Measured Total Depth		True Vertical Depth		BHL From Lease, Unit, or Property Line:			