

Oklahoma Corporation Commission
Oil & Gas Conservation Division
Post Office Box 52000
Oklahoma City, Oklahoma 73152-2000
Rule 165: 10-3-25

Form 1002A

API No.: 35095206680000

Completion Report

Spud Date: February 03, 2019

OTC Prod. Unit No.:

Drilling Finished Date: March 10, 2019

1st Prod Date:

Completion Date: August 23, 2019

Drill Type: HORIZONTAL HOLE

Well Name: HOLLY 2-34H27X22

Purchaser/Measurer:

Location: MARSHALL 34 4S 5E
NW NW NE NE
230 FNL 1118 FEL of 1/4 SEC
Latitude: 34.171832 Longitude: -96.761885
Derrick Elevation: 0 Ground Elevation: 796

First Sales Date:

Operator: XTO ENERGY INC 21003

22777 SPRINGWOODS VILLAGE PKWY
SPRING, TX 77389-1425

Completion Type	
X	Single Zone
	Multiple Zone
	Commingled

Location Exception
Order No
692789

Increased Density
Order No
689865
689866

Casing and Cement							
Type	Size	Weight	Grade	Feet	PSI	SAX	Top of CMT
CONDUCTOR	20	169	J-55	103			SURFACE
SURFACE	13 3/8	54.5	J-55	1962		855	SURFACE
PRODUCTION	5 1/2	20, 23	P-110	18118		1645	3248

Liner								
Type	Size	Weight	Grade	Length	PSI	SAX	Top Depth	Bottom Depth
There are no Liner records to display.								

Total Depth: 18118

Packer	
Depth	Brand & Type
There are no Packer records to display.	

Plug	
Depth	Plug Type
There are no Plug records to display.	

Initial Test Data

Test Date	Formation	Oil BBL/Day	Oil-Gravity (API)	Gas MCF/Day	Gas-Oil Ratio Cu FT/BBL	Water BBL/Day	Pumpin or Flowing	Initial Shut- In Pressure	Choke Size	Flow Tubing Pressure
-----------	-----------	----------------	----------------------	----------------	----------------------------	------------------	----------------------	---------------------------------	---------------	-------------------------

There are no Initial Data records to display.

Completion and Test Data by Producing Formation

Formation Name: WOODFORD

Code: 319WDFD

Class: TA

Spacing Orders	
Order No	Unit Size
583819	640
558774	640
692788	MULTIUNIT

Perforated Intervals	
From	To
7666	17984

Acid Volumes
4,000 GALLONS

Fracture Treatments
38 STAGES - 535,532 BARRELS TREATED WATER, 1,369,320 POUNDS 100 MESH SAND, 10,948,252 POUNDS 40.70 SAND, 3,045,340 POUNDS CRC SAND

Formation	Top
WOODFORD	7351

Were open hole logs run? No

Date last log run:

Were unusual drilling circumstances encountered? No

Explanation:

Other Remarks

IRREGULAR SECTION. WAITING ON OFFSET WELLS TO BE COMPLETED BEFORE PRODUCING. OCC - OPERATOR WILL FILE AMENDED 1002A TO SHOW INITIAL TEST WHEN WELL STARTS PRODUCING.

Lateral Holes

Sec: 22 TWP: 4S RGE: 5E County: MARSHALL

NE NE NW NE

59 FNL 1571 FEL of 1/4 SEC

Depth of Deviation: 6109 Radius of Turn: 994 Direction: 359 Total Length: 10748

Measured Total Depth: 18118 True Vertical Depth: 5800 End Pt. Location From Release, Unit or Property Line: 60

FOR COMMISSION USE ONLY

1143970

Status: Accepted

API NO. 095-20668
OTC PROD.
UNIT NO.

(PLEASE TYPE OR USE BLACK INK ONLY)

OKLAHOMA CORPORATION COMMISSION
Oil & Gas Conservation Division
Post Office Box 52000
Oklahoma City, Oklahoma 73152-2000
Rule 165:10-3-25

RECEIVED

Form 1002A
Rev. 2009

OCT 22 2019

OKLAHOMA CORPORATION
COMMISSION

☒ ORIGINAL
☐ AMENDED (Reason)

COMPLETION REPORT

TYPE OF DRILLING OPERATION

☐ STRAIGHT HOLE ☐ DIRECTIONAL HOLE ☒ HORIZONTAL HOLE
☐ SERVICE WELL

If directional or horizontal, see reverse for bottom hole location.

COUNTY Marshall SEC 34 TWP 04S RGE 05E
LEASE NAME Holly 2-34H27X22
NW 1/4 NW 1/4 NE 1/4 NE 1/4 FNL OF 230 FEL OF 1118
ELEVATION 796' Ground Latitude (if known) 34.171832 Longitude (if known) -96.761885
OPERATOR NAME XTO Energy Inc. OTC / OCC OPERATOR NO. 21003
ADDRESS 210 Park Avenue, Suite 2350
CITY Oklahoma City STATE Oklahoma ZIP 73102

SPUD DATE 2/3/2019
DRLG FINISHED DATE 3/10/2019
DATE OF WELL COMPLETION 8-23-2019
1st PROD DATE
RECOMP DATE

640 Acres
Date Frac Entered
LOCATE WELL

COMPLETION TYPE

☒ SINGLE ZONE
☐ MULTIPLE ZONE
☐ COMINGLED
LOCATION EXCEPTION ORDER NO. 692789, 692788
INCREASED DENSITY ORDER NO. 689865, 689866

CASING & CEMENT (Attach Form 1002C)

TYPE	SIZE	WEIGHT	GRADE	FEET	PSI	SAX	TOP OF CMT
CONDUCTOR	20"	169	J-55	103			Surface
SURFACE	13 3/8"	54.5	J-55	1962		855	Surface
INTERMEDIATE							
PRODUCTION	5 1/2"	20.23	P-110	18118		1645	3248
LINER							
						TOTAL DEPTH	18,118

PACKER @ BRAND & TYPE PLUG @ TYPE PLUG @ TYPE
PACKER @ BRAND & TYPE PLUG @ TYPE PLUG @ TYPE

COMPLETION & TEST DATA BY PRODUCING FORMATION

FORMATION Woodford
SPACING & SPACING ORDER NUMBER 640: 602741, 680125/558774, 5838189
CLASS: Oil, Gas, Dry, Inj, Disp, Comm Disp, Svc TA
PERFORATED INTERVALS 38 Stages, 7666-17984
ACID/VOLUME 4000 gals
FRACTURE TREATMENT (Fluids/Prop Amounts) 535,532 BTW - Burdels Treated Water, 1,369,320# 100 Mesh Sand, 10,948,252# 40/70, 3,045,340# CRC sand

Min Gas Allowable (165:10-17-7) OR Gas Purchaser/Measurer First Sales Date
Oil Allowable (165:10-13-3)

INITIAL TEST DATA

INITIAL TEST DATE See Comments
OIL-BBL/DAY
OIL-GRAVITY (API)
GAS-MCF/DAY
GAS-OIL RATIO CU FT/BBL
WATER-BBL/DAY
PUMPING OR FLOWING
INITIAL SHUT-IN PRESSURE
CHOKE SIZE
FLOW TUBING PRESSURE

AS SUBMITTED

A record of the formations drilled through, and pertinent remarks are presented on the reverse. I declare that I have knowledge of the contents of this report and am authorized by my organization to make this report, which was prepared by me or under my supervision and direction, with the data and facts stated herein to be true, correct, and complete to the best of my knowledge and belief.
SIGNATURE Debbie Waggoner
210 Park Avenue, Suite 2350 Oklahoma City Ok 73102
ADDRESS CITY STATE ZIP
DATE 10/18/2019 PHONE NUMBER 405-319-3243
EMAIL ADDRESS debbie_waggoner@xtoenergy.com

PLEASE TYPE OR USE BLACK INK ONLY
FORMATION RECORD

Give formation names and tops, if available, or descriptions and thickness of formations drilled through. Show intervals cored or drillstem tested.

LEASE NAME HOLLY WELL NO. 2-34H27X22

NAMES OF FORMATIONS	TOP
Woodford	7351

Per Debbie Wagner

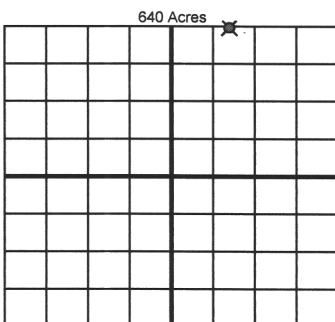
FOR COMMISSION USE ONLY	
ITD on file <input type="checkbox"/> YES <input type="checkbox"/> NO	
APPROVED _____	DISAPPROVED _____
2) Reject Codes	

Were open hole logs run?	yes <input type="checkbox"/> no <input checked="" type="checkbox"/>
Date Last log was run	_____
Was CO ₂ encountered?	yes <input type="checkbox"/> no <input checked="" type="checkbox"/> at what depths? _____
Was H ₂ S encountered?	yes <input type="checkbox"/> no <input checked="" type="checkbox"/> at what depths? _____
Were unusual drilling circumstances encountered?	yes <input type="checkbox"/> no <input checked="" type="checkbox"/>
If yes, briefly explain below	

Per Debbie Wagner

Other remarks: Irregular Section

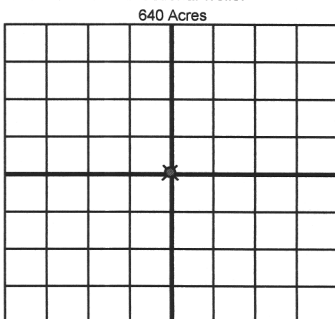
Waiting on offset wells to be completed before producing.



If more than three drainholes are proposed, attach a separate sheet indicating the necessary information.

Direction must be stated in degrees azimuth. Please note, the horizontal drainhole and its end point must be located within the boundaries of the lease or spacing unit.

Directional surveys are required for all drainholes and directional wells.



BOTTOM HOLE LOCATION FOR DIRECTIONAL HOLE

SEC	TWP	RGE	COUNTY
Spot Location	1/4	1/4	1/4
Feet From 1/4 Sec Lines	FSL		FWL
Measured Total Depth	True Vertical Depth	BHL From Lease, Unit, or Property Line:	

BOTTOM HOLE LOCATION FOR HORIZONTAL HOLE: (LATERALS)

LATERAL #1			
SEC	TWP	RGE	COUNTY
22	04S	05E	Marshall
Spot Location	NE 1/4	NW 1/4	NE 1/4
Feet From 1/4 Sec Lines	FNL 59		FEL 1571
Depth of Deviation	6,109	Radius of Turn	994
Direction	359 350	Total Length	10,748
Measured Total Depth	18,118	True Vertical Depth	5,800
BHL From Lease, Unit, or Property Line: 60 FNL & 1571 FEL			

LATERAL #2

SEC	TWP	RGE	COUNTY
Spot Location	1/4	1/4	1/4
Feet From 1/4 Sec Lines	FSL		FWL
Depth of Deviation	Radius of Turn	Direction	Total Length
Measured Total Depth	True Vertical Depth	BHL From Lease, Unit, or Property Line:	

LATERAL #3

SEC	TWP	RGE	COUNTY
Spot Location	1/4	1/4	1/4
Feet From 1/4 Sec Lines	FSL		FWL
Depth of Deviation	Radius of Turn	Direction	Total Length
Measured Total Depth	True Vertical Depth	BHL From Lease, Unit, or Property Line:	