

Oklahoma Corporation Commission
Oil & Gas Conservation Division
Post Office Box 52000
Oklahoma City, Oklahoma 73152-2000
Rule 165: 10-3-25

Form 1002A

API No.: 35147282070000

Completion Report

Spud Date: June 11, 2019

OTC Prod. Unit No.:

Drilling Finished Date: June 11, 2019

1st Prod Date: July 13, 2019

Completion Date: July 12, 2019

Drill Type: STRAIGHT HOLE

Min Gas Allowable: Yes

Well Name: KEEFER J-1

Purchaser/Measurer:

Location: WASHINGTON 14 26N 13E
NW NW SE NE
1140 FSL 1515 FWL of 1/4 SEC
Derrick Elevation: 0 Ground Elevation: 785

First Sales Date:

Operator: L & L PRODUCERS 2737
PO BOX 215
1420 N CANEY ST
COPAN, OK 74022-0215

Completion Type	
X	Single Zone
	Multiple Zone
	Commingled

Location Exception	
Order No	
There are no Location Exception records to display.	

Increased Density	
Order No	
There are no Increased Density records to display.	

Casing and Cement							
Type	Size	Weight	Grade	Feet	PSI	SAX	Top of CMT
CONDUCTOR	8 5/8	22		40		18	SURFACE
PRODUCTION	4.5	11.5		848		70	SURFACE

Liner								
Type	Size	Weight	Grade	Length	PSI	SAX	Top Depth	Bottom Depth
There are no Liner records to display.								

Total Depth: 848

Packer	
Depth	Brand & Type
There are no Packer records to display.	

Plug	
Depth	Plug Type
There are no Plug records to display.	

Initial Test Data										
Test Date	Formation	Oil BBL/Day	Oil-Gravity (API)	Gas MCF/Day	Gas-Oil Ratio Cu FT/BBL	Water BBL/Day	Pumpin or Flowing	Initial Shut-In Pressure	Choke Size	Flow Tubing Pressure
Jul 14, 2019	PERU	10	36		10	100	PUMPING			

Completion and Test Data by Producing Formation			
Formation Name: PERU		Code: 404PERU	Class: OIL
Spacing Orders		Perforated Intervals	
Order No	Unit Size	From	To
NONE		774	808
Acid Volumes		Fracture Treatments	
300 GALLONS 15% ACID		275 BARRELS WATER, 10,000 POUNDS 10/20 BRADY SAND, BROWN	

Formation	Top
PERU SAND	774
PERU SAND	802

Were open hole logs run? Yes
Date last log run: July 11, 2019

Were unusual drilling circumstances encountered? No
Explanation:

Other Remarks
There are no Other Remarks.

FOR COMMISSION USE ONLY	
Status: Accepted	1143925

RECEIVED

OCT 02 2019

Form 1002A
Rev. 2009

OKLAHOMA CORPORATION COMMISSION

API NO. **147-28207**
OTC PROD. UNIT NO.

PLEASE TYPE OR USE BLACK INK ONLY
NOTE:

Attach copy of original 1002A
if recompletion or reentry.

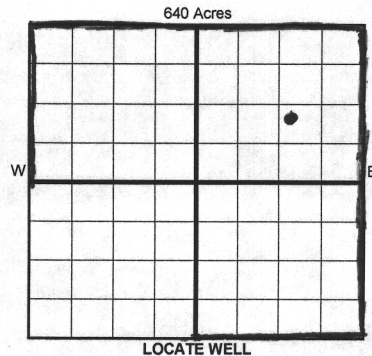
OKLAHOMA CORPORATION COMMISSION
Oil & Gas Conservation Division
Post Office Box 52000
Oklahoma City, Oklahoma 73152-2000
Rule 165:10-3-25

COMPLETION REPORT

TYPE OF DRILLING OPERATION
☒ STRAIGHT HOLE ☐ DIRECTIONAL HOLE ☐ HORIZONTAL HOLE
☐ SERVICE WELL

If directional or horizontal, see reverse for bottom hole location.

COUNTY Washington	SEC 14	TWP 26N	RGE 13E	SPUD DATE 6-11-19
LEASE NAME Keefer	WELL NO. J-1	DATE OF WELL COMPLETION 7-12-19	1st PROD DATE 7-13-19	
NW 1/4 NW 1/4 SE 1/4 NE 1/4	FSL OF 1/4 SEC 1140	FWL OF 1/4 SEC 1515	RECOMP DATE	
ELEVATION Derrick FL Ground 785	Latitude (if known)	Longitude (if known)		
OPERATOR NAME L+L Producers	OTC/OCC OPERATOR NO. 02737			
ADDRESS P.O. Box 215				
CITY Copan	STATE OK	ZIP 74022		



COMPLETION TYPE

☒ SINGLE ZONE
☐ MULTIPLE ZONE
Application Date
☐ COMMINGLED
Application Date
LOCATION
EXCEPTION ORDER
INCREASED DENSITY
ORDER NO.

CASING & CEMENT (Form 1002C must be attached)

TYPE	SIZE	WEIGHT	GRADE	FEET	PSI	SAX	TOP OF CMT
CONDUCTOR							
SURFACE	8 5/8"	22#		40'		18	surface
INTERMEDIATE							
PRODUCTION	4.5"	11.5#		840'		70	surface
LINER							

PACKER @ _____ BRAND & TYPE _____ PLUG @ _____ TYPE _____ PLUG @ _____ TYPE _____
PACKER @ _____ BRAND & TYPE _____ PLUG @ _____ TYPE _____ PLUG @ _____ TYPE _____

TOTAL DEPTH **848**

COMPLETION & TEST DATA BY PRODUCING FORMATION

FORMATION	Peru						
SPACING & SPACING ORDER NUMBER	none						
CLASS: Oil, Gas, Dry, Inj, Disp, Comm Disp, Svc	oil						
PERFORATED INTERVALS	774-88 802-08						
ACID/VOLUME	300 gal 15% acid						
FRACTURE TREATMENT (Fluids/Prop Amounts)	275 bbls water 10,000 # 10/20 Brady Sand, Brown						

☒ Min Gas Allowable (165:10-17-7)
OR
☐ Oil Allowable (165:10-13-3)

Gas Purchaser/Measurer
First Sales Date

INITIAL TEST DATA

INITIAL TEST DATE	7-14-19				
OIL-BBL/DAY	10 bbl				
OIL-GRAVITY (API)	36°				
GAS-MCF/DAY	—				
GAS-OIL RATIO CU FT/BBL	10/100/10%				
WATER-BBL/DAY	100 bbl				
PUMPING OR FLOWING	Pumping				
INITIAL SHUT-IN PRESSURE	—				
CHOKE SIZE	—				
FLOW TUBING PRESSURE	—				

AS SUBMITTED

A record of the formations drilled through, and pertinent remarks are presented on the reverse. I declare that I have knowledge of the contents of this report and am authorized by my organization to make this report, which was prepared by me or under my supervision and direction, with the data and facts stated herein to be true, correct, and complete to the best of my knowledge and belief.

David Bird SIGNATURE
P.O. Box 215 ADDRESS
Copan OK 74022 CITY STATE ZIP
9/21/19 620-205-0308 DATE PHONE NUMBER
dbird@indyschools.com EMAIL ADDRESS

CBL Shows Good Bond DPA

Monitor Report to Fore Focus


Give formation names and tops, if available, or descriptions and thickness of formations drilled through. Show intervals cored or drillstem tested.

LEASE NAME

Keefe

WELL NO.

五、

NAMES OF FORMATIONS	TOP
<p>Peru Sand</p> 	<p>774-88</p> <p>802-08</p>

FOR COMMISSION USE ONLY	
ITD on file	<input type="checkbox"/> YES <input type="checkbox"/> NO
APPROVED	DISAPPROVED
2) Reject Codes	

Were open hole logs run? ☒ yes ☐ no

Date Last log was run 7-11-19

Was CO₂ encountered? ☐ yes ☒ no at what depths? _____

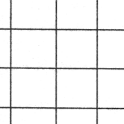
Was H₂S encountered? ☐ yes ☒ no at what depths? _____

Were unusual drilling circumstances encountered? ☐ yes ☒ no

If yes, briefly explain below

Other remarks:

640 Acres

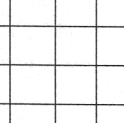


If more than three drainholes are proposed, attach a separate sheet indicating the necessary information.

Direction must be stated in degrees azimuth.
Please note, the horizontal drainhole and its end
point must be located within the boundaries of the
lease or spacing unit.

Directional surveys are required for all drainholes and directional wells.

640 Acres



BOTTOM HOLE LOCATION FOR DIRECTIONAL HOLE

SEC	TWP	RGE	COUNTY
Spot Location			
1/4	1/4	1/4	1/4
Measured Total Depth		True Vertical Depth	Feet From 1/4 Sec Lines
			FSL
		FWL	
BHL From Lease, Unit, or Property Line:			

BOTTOM HOLE LOCATION FOR HORIZONTAL HOLE: (LATERALS)

LATERAL #1

SEC	TWP	RGE	COUNTY			
Spot Location						
1/4	1/4	1/4	1/4	Feet From 1/4 Sec Lines	FSL	FWL
Depth of Deviation		Radius of Turn	Direction		Total Length	
Measured Total Depth		True Vertical Depth	BHL From Lease, Unit, or Property Line:			

LATERAL #2

SEC	TWP	RGE	COUNTY
Spot Location			
1/4	1/4	1/4	1/4
Feet From 1/4 Sec Lines		FSL	FWL
Depth of Deviation	Radius of Turn	Direction	Total Length
Measured Total Depth		True Vertical Depth	
BHL From Lease, Unit, or Property Line:			

LATERAL #3

EXTERNAL #						
SEC	TWP	RGE	COUNTY			
Spot Location						
1/4		1/4		1/4		1/4
Feet From 1/4 Sec Lines				FSL		FWL
Depth of Deviation		Radius of Turn		Direction		Total Length
Measured Total Depth		True Vertical Depth		BHL From Lease, Unit, or Property Line:		