

Oklahoma Corporation Commission  
Oil & Gas Conservation Division  
Post Office Box 52000  
Oklahoma City, Oklahoma 73152-2000  
Rule 165: 10-3-25

Form 1002A

API No.: 35093247490001

**Completion Report**

Spud Date: March 19, 2008

OTC Prod. Unit No.: 093-124198

Drilling Finished Date: April 06, 2008

**Amended**

1st Prod Date: June 06, 2008

Amend Reason: RECOMPLETION ADD OSWEGO AND ADDED PERFORATIONS CHESTER

Completion Date: June 04, 2008

Recomplete Date: December 14, 2021

**Drill Type: STRAIGHT HOLE**

Min Gas Allowable: Yes

Well Name: FRANCIS 3-31

Purchaser/Measurer:

Location: MAJOR 31 20N 10W  
NW SE NW NW  
1750 FSL 710 FWL of 1/4 SEC  
Latitude: 36.1713395 Longitude: -98.3145057  
Derrick Elevation: 0 Ground Elevation: 0

First Sales Date:

Operator: FARO OPERATING COMPANY ANADARKO LLC 24396

791 SOUTHPARK DRIVE #1200  
LITTLETON, CO 80120

Completion Type		Location Exception		Increased Density			
	Single Zone	Order No		Order No			
	Multiple Zone	549619		549286			
X	Commingled	570118		722287			

Casing and Cement							
Type	Size	Weight	Grade	Feet	PSI	SAX	Top of CMT
SURFACE	8 5/8	24	J-55	503		270	
PRODUCTION	4 1/2	11.6	J-55 / N-80	8960		750	6660

Liner								
Type	Size	Weight	Grade	Length	PSI	SAX	Top Depth	Bottom Depth
There are no Liner records to display.								

**Total Depth: 8790**

Packer		Plug	
Depth	Brand & Type	Depth	Plug Type
There are no Packer records to display.		There are no Plug records to display.	

Initial Test Data
-------------------

Test Date	Formation	Oil BBL/Day	Oil-Gravity (API)	Gas MCF/Day	Gas-Oil Ratio Cu FT/BBL	Water BBL/Day	Pumpin or Flowing	Initial Shut-In Pressure	Choke Size	Flow Tubing Pressure
Jan 29, 2022	COMMINGLED	13.92	35.5	37	2644	61	PUMPING			180

#### Completion and Test Data by Producing Formation

Formation Name: OSWEGO

Code: 404OSWG

Class: OIL

##### Spacing Orders

Order No	Unit Size
208611	640

##### Perforated Intervals

From	To
6853	6996

##### Acid Volumes

1,000 GALLONS 15% HCL
-----------------------

##### Fracture Treatments

30,500 GALLONS XL GEL, 50,000 POUNDS SAND
---

Formation Name: RED FORK

Code: 404RDFK

Class: OIL

##### Spacing Orders

Order No	Unit Size
35526	640

##### Perforated Intervals

From	To
7158	7162

##### Acid Volumes

1,500 GALLONS 15% HCL
-----------------------

##### Fracture Treatments

2,300 BARRELS WATER, 23,000 POUNDS SAND
---

Formation Name: INOLA

Code: 404INOL

Class: OIL

##### Spacing Orders

Order No	Unit Size
UNSPACED	

##### Perforated Intervals

From	To
7230	7236

##### Acid Volumes

1,000 GALLONS 15% HCL
-----------------------

##### Fracture Treatments

FRACED WITH RED FORK
----------------------

Formation Name: CHESTER

Code: 354CSTR

Class: OIL

##### Spacing Orders

Order No	Unit Size
208611	640

##### Perforated Intervals

From	To
7296	7320

##### Acid Volumes

There are no Acid Volume records to display.
--

##### Fracture Treatments

FRACED WITH RED FORK
----------------------

Formation Name: UNCONFORMITY CHESTER		Code: 354UNCCR		Class: OIL	
<b>Spacing Orders</b>			<b>Perforated Intervals</b>		
<b>Order No</b>	<b>Unit Size</b>		<b>From</b>	<b>To</b>	
35526	640		7500	7503	
<b>Acid Volumes</b>			<b>Fracture Treatments</b>		
500 GALLONS 15% HCL			FRACED WITH RED FORK		

Formation Name: MISSISSIPPI SOLID		Code: 351MSSSD		Class: OIL	
<b>Spacing Orders</b>			<b>Perforated Intervals</b>		
<b>Order No</b>	<b>Unit Size</b>		<b>From</b>	<b>To</b>	
208611	640		7838	8404	
<b>Acid Volumes</b>			<b>Fracture Treatments</b>		
2,000 GALLONS 7			10,000 BARRELS WATER, 152,000 POUNDS		

Formation Name: MISENER-HUNTON		Code: 319MSRH		Class: OIL	
<b>Spacing Orders</b>			<b>Perforated Intervals</b>		
<b>Order No</b>	<b>Unit Size</b>		<b>From</b>	<b>To</b>	
208611	640		8458	8858	
<b>Acid Volumes</b>			<b>Fracture Treatments</b>		
1,000 GALLONS 7.5% HCL			6,000 BARRELS WATER, 80,600 POUNDS SAND		

Formation Name: COMMINGLED		Code: 000CMGL		Class: OIL	
----------------------------	--	---------------	--	------------	--

Formation	Top
BIG LIME	6730
OSWEGO	6757
SKINNER	6999
PINK LIME	7075
INOLA	7190
CHESTER	7256
MANNING	7396
MERAMEC	7717
WOODFORD SHALE	8310
HUNTON	8348
COMMINGLED	0

Were open hole logs run? Yes  
Date last log run: April 07, 2008

Were unusual drilling circumstances encountered? No  
Explanation:

<b>Other Remarks</b>
OSWEGO ADDED TO PRODUCING FORMATIONS. ADDED PERFORATIONS IN CHESTER FROM 7,296' - 7,298' AND 7,315' - 7,317'

FOR COMMISSION USE ONLY	
Status: Accepted	1147588

RECEIVED

Form 1002A  
Rev. 2021

FEB 15 2022

API NO. 35-093-24749  
OTC PROD. UNIT NO. 093-124198

Oil and Gas Conservation Division  
P.O. Box 52000  
Oklahoma City, OK 73152-2000  
405-521-2331  
OCCCentralProcessing@OCC.OK.GOV

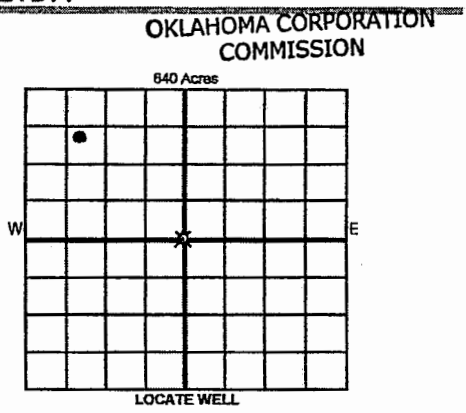


OKLAHOMA  
Corporation  
Commission

ORIGINAL AMENDED (Reason) \_\_\_\_\_ Rule 165-10-3-25  
Recompletion Add Oswego  
b Added parts Chester  
COMPLETION REPORT

TYPE OF DRILLING OPERATION  
☒ STRAIGHT HOLE ☐ DIRECTIONAL HOLE ☐ HORIZONTAL HOLE  
☐ SERVICE WELL  
If directional or horizontal, see reverse for bottom hole location.

COUNTY Major SEC 31 TWP 20N RGE 10W  
LEASE NAME Francis WELL NO. 3-31  
NW 1/4 SE 1/4 NW 1/4 NW 1/4 FSL 1750 FWL 710  
ELEVATION Derrick FL Ground Latitude 36.1713395 Longitude -98.3145057  
OPERATOR NAME FARO Operating Company Anadarko OTC / OCC OPERATOR NO. 24396  
ADDRESS 791 Southpark Drive, Suite 1200  
CITY Littleton STATE CO ZIP 80120



COMPLETION TYPE

☐ SINGLE ZONE  
☐ MULTIPLE ZONE  
Application Date  
☐ COMMINGLED  
Application Date  
LOCATION EXCEPTION ORDER NO. 549619/570118  
MULTIUNIT ORDER NO.  
INCREASED DENSITY ORDER NO. 549286/722287

CASING & CEMENT (Attach Form 1002C)

TYPE	SIZE	WEIGHT	GRADE	FEET	PSI	SAX	TOP OF CMT
CONDUCTOR							
SURFACE	8 5/8"	24#	J-55	503		270	
INTERMEDIATE							
PRODUCTION	4 1/2"	11.6	J-55 / N-80	8960		750	6660
LINER							

PACKER @ \_\_\_\_\_ BRAND & TYPE \_\_\_\_\_ PLUG @ \_\_\_\_\_ TYPE \_\_\_\_\_ PLUG @ \_\_\_\_\_ TYPE \_\_\_\_\_ TOTAL DEPTH 8790  
PACKER @ \_\_\_\_\_ BRAND & TYPE \_\_\_\_\_ PLUG @ \_\_\_\_\_ TYPE \_\_\_\_\_ PLUG @ \_\_\_\_\_ TYPE \_\_\_\_\_  
COMPLETION & TEST DATA BY PRODUCING FORMATION Oswego, Red Fork, Tools, Chester, Unconformity, Chester, Mississippi Solid  
Reported RO Fractures

FORMATION	404-OSWG	404-RDFK	404-INOL	354-CSTR	354-UNCCR	354-MSSSD
SPACING & SPACING ORDER NUMBER	208611 (640)	35526 (640)	Unspaced	208611 (640)	35526 (640)	208611 (640)
CLASS: Oil, Gas, Dry, Inj, Disp, Comm Disp, Svc	Oil	Oil	Oil	Oil	Oil	Oil
PERFORATED INTERVALS	6,853 - 6,996	7,158 - 7,162	7,230 - 7,236	7,296 - 7,320	7,500 - 7,503	7,838-8,404
ACID/VOLUME	1,000 gal 15% HCL	1,500 gal 15% HCL	1,000 gal 15% HCL		500 gal 15% HCL	2,000 gal 7%
FRACTURE TREATMENT (Fluids/Prop Amounts)	30,500gal (XL GEL) 50,000 # Sand	2300 bbls water 23,000 lbs sand	Frac with RDFK	Frac with RDFK	Frac with RDFK	10,000 bbls water 152,000 lbs

Min Gas Allowable (165-10-17-7) ☒ OR Oil Allowable (165-10-13-3) Purchaser/Measurer \_\_\_\_\_ First Sales Date \_\_\_\_\_

INITIAL TEST DATA

INITIAL TEST DATE	1/29/22					
OIL-BBL/DAY	13.92					
OIL-GRAVITY (API)	35.5					
GAS-MCF/DAY	36.8					
GAS-OIL RATIO CU FT/BBL	2644					
WATER-BBL/DAY	61.12					
PUMPING OR FLOWING	Pumping					
INITIAL SHUT-IN PRESSURE	0					
CHOKE SIZE	n/a					
FLOW TUBING PRESSURE	180					

A record of the formations drilled through, and pertinent remarks are presented on the reverse. I declare that I have knowledge of the contents of this report and am authorized by my organization to make this report, which was prepared by me or under my supervision and direction, with the data and facts stated herein to be true, correct, and complete to the best of my knowledge and belief.

SIGNATURE \_\_\_\_\_ Eric Marshall DATE 2/15/22 PHONE NUMBER 7208787491  
520 Courtney Way Lafayette CO 80026 emarshall@spireoilandgas.com  
ADDRESS CITY STATE ZIP EMAIL ADDRESS

API NO. 35-093-24749  
OTC PROD.  
UNIT NO.

Oil and Gas Conservation Division  
P.O. Box 52000  
Oklahoma City, OK 73152-2000  
405-521-2331  
OCCCentralProcessing@OCC.OK.GOV



**OKLAHOMA**  
Corporation  
Commission

Form 1002A  
Rev. 2021

☒ ORIGINAL  
☒ AMENDED (Reason) Recompletion Rule 165:10-3-25  
COMPLETION REPORT

## TYPE OF DRILLING OPERATION

☒ STRAIGHT HOLE ☐ DIRECTIONAL HOLE ☐ HORIZONTAL HOLE  
☐ SERVICE WELL

If directional or horizontal, see reverse for bottom hole location.

COUNTY	Major	SEC	31	TWP	20N	RGE	10W
LEASE NAME	Francis			WELL NO.	3-31		
NW 1/4 SE 1/4 NW 1/4 NW 1/4	FSL		1750	FWL	710		
ELEVATION	Ground	Latitude	36.1713395		Longitude	-98.3145057	
OPERATOR NAME	FARO Operating Company Anadarko				OTC / OCC OPERATOR NO.	24396	
ADDRESS	791 Southpark Drive, Suite 1200						
CITY	Littleton		STATE	CO	ZIP	80120	

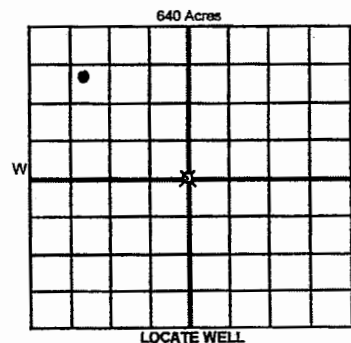
SPUD DATE 3/19/08

DRILG FINISHED DATE 4/6/08

DATE OF WELL COMPLETION 6/4/08

1st PROD DATE 6/6/08

RECOMP DATE 12/14/21



## COMPLETION TYPE

<input type="radio"/> SINGLE ZONE	
<input type="radio"/> MULTIPLE ZONE	
Application Date	
<input type="radio"/> COMMINGLED	
Application Date	
LOCATION EXCEPTION ORDER NO.	548619/570118
MULTIUNIT ORDER NO.	
INCREASED DENSITY ORDER NO.	549286/722287

## CASING &amp; CEMENT (Attach Form 1002C)

TYPE	SIZE	WEIGHT	GRADE	FEET	PSI	SAX	TOP OF CMT
CONDUCTOR							
SURFACE	8 5/8"	24#	J-55	503		270	
INTERMEDIATE							
PRODUCTION	4 1/2"	11.6	J-55 / N-80	8960		750	6660
LINER							

PACKER @ \_\_\_\_\_ BRAND & TYPE \_\_\_\_\_ PLUG @ \_\_\_\_\_ TYPE \_\_\_\_\_ PLUG @ \_\_\_\_\_ TYPE \_\_\_\_\_ TOTAL DEPTH 8790  
PACKER @ \_\_\_\_\_ BRAND & TYPE \_\_\_\_\_ PLUG @ \_\_\_\_\_ TYPE \_\_\_\_\_ PLUG @ \_\_\_\_\_ TYPE \_\_\_\_\_

## COMPLETION &amp; TEST DATA BY PRODUCING FORMATION

FORMATION	Misener-Hunton					
SPACING & SPACING ORDER NUMBER	208611 (640)					
CLASS: Oil, Gas, Dry, Inj, Disp, Comm Disp, Svc	Oil					
PERFORATED INTERVALS	8,458 - 8,858					
ACID/VOLUME	1,000 gal 7.5% HCL					
FRACTURE TREATMENT (Fluids/Prop Amounts)	6,000 bbl water 80,600 # Sand					

Min Gas Allowable (165:10-17-7)

OR

Oil Allowable (165:10-13-3)

Purchaser/Measurer

First Sales Date

## INITIAL TEST DATA

INITIAL TEST DATE	1/29/22					
OIL-BBL/DAY	13.92					
OIL-GRAVITY (API)	35.5					
GAS-MCF/DAY	36.8					
GAS-OIL RATIO CU FT/BBL	2644					
WATER-BBL/DAY	61.12					
PUMPING OR FLOWING	Pumping					
INITIAL SHUT-IN PRESSURE	0					
CHOKE SIZE	n/a					
FLOW TUBING PRESSURE	180					

A record of the formations drilled through, and pertinent remarks are presented on the reverse. I declare that I have knowledge of the contents of this report and am authorized by my organization to make this report, which was prepared by me or under my supervision and direction, with the data and facts stated herein to be true, correct, and complete to the best of my knowledge and belief.

*Eric Marshall*  
SIGNATURE

520 Courtney Way

ADDRESS

Lafayette

CITY

Eric Marshall  
NAME (PRINT OR TYPE)

CO 80226

STATE ZIP

2/15/22

DATE

7208787491

PHONE NUMBER

emarshall@spireoilandgas.com

EMAIL ADDRESS

PLEASE TYPE OR USE BLACK INK ONLY  
FORMATION RECORD

Give formation names and tops, if available, or descriptions and thickness of formations drilled through. Show intervals cored or drillstem tested.

NAMES OF FORMATIONS	TOP
Big Lime	6730
Oswego	6757
Skinner	6999
Pink Lime	7075
Inola	7190
Chester	7256
Manning	7396
Meramec	7717
Woodford Shale	8310
Hunton	8348

LEASE NAME \_\_\_\_\_ WELL NO. \_\_\_\_\_

FOR COMMISSION USE ONLY	
ITD on file <input type="checkbox"/> YES <input type="checkbox"/> NO	
APPROVED _____ DISAPPROVED _____	2) Reject Codes _____
_____	
_____	
_____	
_____	

Were open hole logs run?	<input checked="" type="radio"/> yes <input type="radio"/> no
Date Last log was run	4/7/2008
Was CO <sub>2</sub> encountered?	<input type="radio"/> yes <input checked="" type="radio"/> no at what depths? _____
Was H <sub>2</sub> S encountered?	<input type="radio"/> yes <input checked="" type="radio"/> no at what depths? _____
Were unusual drilling circumstances encountered?	<input type="radio"/> yes <input checked="" type="radio"/> no
If yes, briefly explain below _____	

Other remarks: Oswego added to producing formations. Added perforations in Chester from 7,296 - 7,298 & 7,315 - 7,317

\_\_\_\_\_

\_\_\_\_\_

\_\_\_\_\_

\_\_\_\_\_

\_\_\_\_\_

640 Acres


If more than three drainholes are proposed, attach a separate sheet indicating the necessary information.

Direction must be stated in degrees azimuth. Please note, the horizontal drainhole and its end point must be located within the boundaries of the lease or spacing unit.

Directional surveys are required for all drainholes and directional wells

640 Acres


BOTTOM HOLE LOCATION FOR DIRECTIONAL HOLE

SEC	TWP	RGE	COUNTY
1/4	1/4	1/4	1/4
Measured Total Depth	True Vertical Depth	Feet From 1/4 Sec Lines	
		BHL From Lease, Unit, or Property Line:	

BOTTOM HOLE LOCATION FOR HORIZONTAL HOLE: (LATERALS)

LATERAL #1

SEC	TWP	RGE	COUNTY
1/4	1/4	1/4	1/4
Depth of Deviation	Radius of Turn	Direction	Total Length
Measured Total Depth	True Vertical Depth	BHL From Lease, Unit, or Property Line:	

LATERAL #2

SEC	TWP	RGE	COUNTY
1/4	1/4	1/4	1/4
Depth of Deviation	Radius of Turn	Direction	Total Length
Measured Total Depth	True Vertical Depth	BHL From Lease, Unit, or Property Line:	

LATERAL #3

SEC	TWP	RGE	COUNTY
1/4	1/4	1/4	1/4
Depth of Deviation	Radius of Turn	Direction	Total Length
Measured Total Depth	True Vertical Depth	BHL From Lease, Unit, or Property Line:	