

Oklahoma Corporation Commission
Oil & Gas Conservation Division
Post Office Box 52000
Oklahoma City, Oklahoma 73152-2000
Rule 165: 10-3-25

Form 1002A

API No.: 35071243110001

Completion Report

Spud Date: June 01, 2009

OTC Prod. Unit No.: 071-202022-0-0000

Drilling Finished Date: June 05, 2009

1st Prod Date: August 04, 2009

Amended

Completion Date: June 22, 2009

Amend Reason: ADD PERFORATIONS TO EXISTING ZONE

Recomplete Date: June 14, 2021

Drill Type: STRAIGHT HOLE

Well Name: VICKERY 1-34

Purchaser/Measurer:

Location: KAY 34 29N 1W
NE SW NW NW
1865 FSL 610 FWL of 1/4 SEC
Derrick Elevation: 1106 Ground Elevation: 1093

First Sales Date:

Operator: BARBER OIL LLC 24363

8801 S YALE AVE STE 150
TULSA, OK 74137-3575

Completion Type		Location Exception		Increased Density	
X	Single Zone	Order No		Order No	
	Multiple Zone	There are no Location Exception records to display.		There are no Increased Density records to display.	
	Commingled				

Casing and Cement							
Type	Size	Weight	Grade	Feet	PSI	SAX	Top of CMT
SURFACE	8 5/8	24		252		175	SURFACE
PRODUCTION	5 1/2	15.5		3520		2280	280

Liner								
Type	Size	Weight	Grade	Length	PSI	SAX	Top Depth	Bottom Depth
There are no Liner records to display.								

Total Depth: 3524

Packer		Plug	
Depth	Brand & Type	Depth	Plug Type
There are no Packer records to display.		There are no Plug records to display.	

Initial Test Data

Test Date	Formation	Oil BBL/Day	Oil-Gravity (API)	Gas MCF/Day	Gas-Oil Ratio Cu FT/BBL	Water BBL/Day	Pumpin or Flowing	Initial Shut-In Pressure	Choke Size	Flow Tubing Pressure
Aug 04, 2009	CLEVELAND	20	39	63	3124	10	FLOWING	390	16/64	40
Jun 14, 2021	CLEVELAND	1	39			41	PUMPING			

Completion and Test Data by Producing Formation

Formation Name: CLEVELAND

Code: 405CLVD

Class: OIL

Spacing Orders

Order No	Unit Size
NONE	

Perforated Intervals

From	To
3184	3194

Acid Volumes

41 BARRELS ORIGINAL TREATMENT IN 2009

Fracture Treatments

475 ? ORIGINAL TREATMENT

Formation Name: CLEVELAND

Code: 405CLVD

Class: OIL

Spacing Orders

Order No	Unit Size
NONE	

Perforated Intervals

From	To
3171	3179
3181	3183
3184	3194
3194	3200
3201	3220
3222	3224
3225	3230

Acid Volumes

3,000 GALLONS NEW TREATMENT

Fracture Treatments

There are no Fracture Treatments records to display.
--

Formation	Top
TONKAWA	2435
LAYTON	2876
CLEVELAND	3170
OSWEGO	3252
BARTLESVILLE SAND	3474
MISSISSIPPI UNCONFORMITY	3496

Were open hole logs run? Yes

Date last log run: June 09, 2009

Were unusual drilling circumstances encountered? No

Explanation:

Other Remarks

OCC - THE ORIGINAL PERFORATIONS FROM 2009 WAS FROM 3184' TO 3194' ALL THE OTHER PERFORATIONS ARE NEW IN THE CLEVELAND.

Status: Accepted

API NO. 071-24311
OTC PROD. UNIT NO. 071-202022

Oil and Gas Conservation Division
P.O. Box 52000
Oklahoma City, OK 73152-2000
405-522-0577
OCCCentralProcessing@OCC.OK.GOV



Form 1002A
Rev. 2020

ORIGINAL
AMENDED (Reason) add perforations to existing zone

Rule 165:10-3-25

COMPLETION REPORT

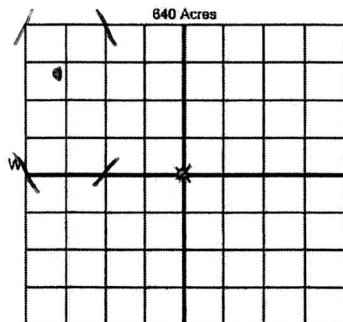
TYPE OF DRILLING OPERATION

☒ STRAIGHT HOLE ☐ DIRECTIONAL HOLE ☐ HORIZONTAL HOLE
☐ SERVICE WELL

If directional or horizontal, see reverse for bottom hole location.

COUNTY	Kay	SEC	34	TWP	29N	RGE	1W
LEASE NAME	Vickery			WELL NO.	1-34		
NE 1/4 SW 1/4 NW 1/4 NW 1/4				1865	610		
ELEVATION	1106	Ground	1093	Latitude	Longitude		
OPERATOR NAME	Barber Oil, LC			OTC / OCC OPERATOR NO.	24363		
ADDRESS	8801 South Yale Avenue, Suite 150						
CITY	Tulsa		STATE	OK	ZIP	74137	

SPUD DATE 06/1/2009
DRLG FINISHED DATE 06/05/2009
DATE OF WELL COMPLETION 06/22/2009
1st PROD DATE 08/4/2009
RECOMP DATE 06/14/2021



LOCATE WELL

COMPLETION TYPE

<input checked="" type="radio"/> SINGLE ZONE	
<input type="radio"/> MULTIPLE ZONE	
<input type="radio"/> COMMINGLED	
LOCATION EXCEPTION ORDER NO.	
MULTIUNIT ORDER NO.	
INCREASED DENSITY ORDER NO.	

CASING & CEMENT (Attach Form 1002C)

TYPE	SIZE	WEIGHT	GRADE	FEET	PSI	SAX	TOP OF CMT
CONDUCTOR							
SURFACE	8 5/8	24#		252		175	Surface
INTERMEDIATE							
PRODUCTION	5 1/2	15.5#		3520		2280	280
LINER							

PACKER @ BRAND & TYPE PLUG @ TYPE PLUG @ TYPE PLUG @ TYPE TOTAL DEPTH 3524'

COMPLETION & TEST DATA BY PRODUCING FORMATION

FORMATION	Cleveland	Cleveland	Cleveland	
SPACING & SPACING ORDER NUMBER	lease basis - W/2 NW/4	lease basis - W/2 NW/4	lease basis - W/2 NW/4	none
CLASS: Oil, Gas, Dry, Inf, Disp, Comm Disp, Svc	Oil	Oil	Oil	
PERFORATED INTERVALS	3184'-3194'	3171'-3179'	3194'-3200'	
		3181'-3183'	3201'-3220'	
		3184'-3194'	3222'-3224'	
ACID/VOLUME	41 bbls	3000 gal	3225'-3230'	
FRACTURE TREATMENT (Fluids/Prop Amounts)	475			

RECEIVED

JUL 27 2021

OKLAHOMA CORPORATION COMMISSION

Min Gas Allowable (165:10-17-3)
OR
Oil Allowable (165:10-13-3)

Purchaser/Measurer
First Sales Date

INITIAL TEST DATA

INITIAL TEST DATE	08/04/2009	6/14/2021	6/14/2021	
OIL-BBL/DAY	20.04	1		
OIL-GRAVITY (API)	39	39	39	
GAS-MCF/DAY	62.6	0	0	
GAS-OIL RATIO CU FT/BBL	3124	0	0	
WATER-BBL/DAY	10.02	41		
PUMPING OR FLOWING	flow	pump	pump	
INITIAL SHUT-IN PRESSURE	390			
CHOKE SIZE	16/64			
FLOW TUBING PRESSURE	40			

A record of the formations drilled through, and pertinent remarks are presented on the reverse. I declare that I have knowledge of the contents of this report and am authorized by my organization to make this report, which was prepared by me or under my supervision and direction, with the data and facts stated herein to be true, correct, and complete to the best of my knowledge and belief.

Barbara Courtney
SIGNATURE
8801 South Yale Ave, Suite 150
ADDRESS
Tulsa
CITY
OK
STATE
74137
ZIP
7/22/2021
DATE
918-638-5851
PHONE NUMBER
bcourtney@barberoilco.com
EMAIL ADDRESS

PLEASE TYPE OR USE BLACK INK ONLY
FORMATION RECORD

Give formation names and tops, if available, or descriptions and thickness of formations drilled through. Show intervals cored or drillstem tested.

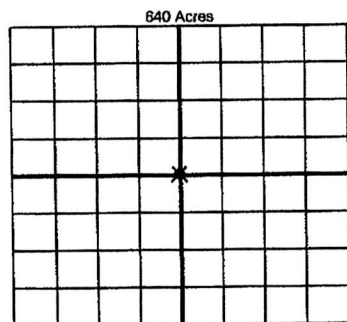
NAMES OF FORMATIONS	TOP
Tonkawa	2435'
Layton	2876'
Cleveland	3170'
Oswego	3252'
Bartlesville Sand	3474'
Mississippi Unc.	3496'

LEASE NAME _____ WELL NO. _____

FOR COMMISSION USE ONLY		
ITD on file	<input type="checkbox"/> YES <input type="checkbox"/> NO	
APPROVED	DISAPPROVED	2) Reject Codes
<div></div> <div></div> <div></div> <div></div> <div></div>		

Were open hole logs run?	<input checked="" type="radio"/> yes <input type="radio"/> no
Date Last log was run	06/09/2009
Was CO ₂ encountered?	<input type="radio"/> yes <input checked="" type="radio"/> no at what depths? _____
Was H ₂ S encountered?	<input type="radio"/> yes <input checked="" type="radio"/> no at what depths? _____
Were unusual drilling circumstances encountered?	<input type="radio"/> yes <input checked="" type="radio"/> no
If yes, briefly explain below	

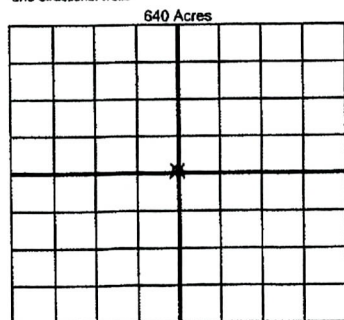
Other remarks:



If more than three drainholes are proposed, attach a separate sheet indicating the necessary information.

Direction must be stated in degrees azimuth. Please note, the horizontal drainhole and its end point must be located within the boundaries of the lease or spacing unit.

Directional surveys are required for all drainholes and directional wells



BOTTOM HOLE LOCATION FOR DIRECTIONAL HOLE

SEC	TWP	RGE	COUNTY
1/4	1/4	1/4	1/4
Measured Total Depth			True Vertical Depth
Feet From 1/4 Sec Lines			BHL From Lease, Unit, or Property Line:

BOTTOM HOLE LOCATION FOR HORIZONTAL HOLE: (LATERALS)

LATERAL #1			
SEC	TWP	RGE	COUNTY
1/4	1/4	1/4	1/4
Depth of Deviation			Radius of Turn
Measured Total Depth			True Vertical Depth
Feet From 1/4 Sec Lines			Direction
Total Length			BHL From Lease, Unit, or Property Line:

LATERAL #2			
SEC	TWP	RGE	COUNTY
1/4	1/4	1/4	1/4
Depth of Deviation			Radius of Turn
Measured Total Depth			True Vertical Depth
Feet From 1/4 Sec Lines			Direction
Total Length			BHL From Lease, Unit, or Property Line:

LATERAL #3			
SEC	TWP	RGE	COUNTY
1/4	1/4	1/4	1/4
Depth of Deviation			Radius of Turn
Measured Total Depth			True Vertical Depth
Feet From 1/4 Sec Lines			Direction
Total Length			BHL From Lease, Unit, or Property Line: