

Oklahoma Corporation Commission
Oil & Gas Conservation Division
Post Office Box 52000
Oklahoma City, Oklahoma 73152-2000
Rule 165: 10-3-25

Form 1002A

API No.: 35045237920000

Completion Report

Spud Date: July 09, 2019

OTC Prod. Unit No.: 045-226215

Drilling Finished Date: July 25, 2019

1st Prod Date: August 26, 2019

Completion Date: August 22, 2019

Drill Type: HORIZONTAL HOLE

Well Name: ROCK CREEK 36X25-20-26 1HA

Purchaser/Measurer: ENABLE

Location: ELLIS 36 20N 26W
SE SW SE SW
200 FSL 1670 FWL of 1/4 SEC
Latitude: 36.1589611 Longitude: -99.9293694
Derrick Elevation: 2476 Ground Elevation: 2458

First Sales Date: 8/26/19

Operator: FOURPOINT ENERGY LLC 23429

100 SAINT PAUL ST STE 400
DENVER, CO 80206-5140

Completion Type		Location Exception		Increased Density	
X	Single Zone	Order No		Order No	
	Multiple Zone	706028		695009	
	Commingled				

Casing and Cement							
Type	Size	Weight	Grade	Feet	PSI	SAX	Top of CMT
SURFACE	9 5/8	36	J-55	802	1000	428	SURFACE
INTERMEDIATE	7	29	P-110	8240	1650	490	1940
PRODUCTION	4 1/2	13.5	P-110	17145	1020	590	6960

Liner								
Type	Size	Weight	Grade	Length	PSI	SAX	Top Depth	Bottom Depth
There are no Liner records to display.								

Total Depth: 17172

Packer	
Depth	Brand & Type
There are no Packer records to display.	

Plug	
Depth	Plug Type
There are no Plug records to display.	

Initial Test Data

Test Date	Formation	Oil BBL/Day	Oil-Gravity (API)	Gas MCF/Day	Gas-Oil Ratio Cu FT/BBL	Water BBL/Day	Pumpin or Flowing	Initial Shut-In Pressure	Choke Size	Flow Tubing Pressure
Oct 02, 2019	CLEVELAND	516	43	1392	2697	1740	PUMPING	50	64/64	310

Completion and Test Data by Producing Formation

Formation Name: CLEVELAND

Code: 405CLVD

Class: GAS

Spacing Orders

Order No	Unit Size
131378	640
185772	640
706027	MULTI UNIT

Perforated Intervals

From	To
9100	16979

Acid Volumes

40,360 GALS FE 15%

Fracture Treatments

7,569,422 LBS 40/70 REGIONAL SAND & 1,330,460 LBS 40/70 KRT SAND.. 205,299 BBLS WATER.
--

Formation	Top
CLEVELAND	8521

Were open hole logs run? No

Date last log run:

Were unusual drilling circumstances encountered? No

Explanation:

Other Remarks

There are no Other Remarks.

Lateral Holes

Sec: 25 TWP: 20N RGE: 26W County: ELLIS

N2 N2 NW NW

1910 FNL 642 FWL of 1/4 SEC

Depth of Deviation: 8228 Radius of Turn: 552 Direction: 1 Total Length: 8003

Measured Total Depth: 17172 True Vertical Depth: 8643 End Pt. Location From Release, Unit or Property Line: 642

FOR COMMISSION USE ONLY

1144272

Status: Accepted

"AS-DRILLED" WELL LOCATION PLAT

COMPANY FOURPOINT ENERGY, LLC LEASE ROCK CREEK 36X25-20-26 WELL NO. 1HA
 SECTION 36 TOWNSHIP 20-N RANGE 26-W LOCATION 200' FSL 1670' FWL
 COUNTY ELLIS STATE OKLAHOMA TOPOGRAPHY AND VEGETATION EXISTING PAD
 LATITUDE 36°09'32.26" LONGITUDE -99°55'45.73" NAD83 ELEVATION 2458' NAVD88 DATE STAKED 1/22/19
 DIRECTION FROM NEAREST TOWN APPROXIMATELY 8.5 MILES NORTHWEST OF ARNETT, OKLAHOMA

BOTTOM HOLE LOCATION
 1910' FNL & 642' FWL
 OF SECTION 25

NAD27:
 X = 1,429,644
 Y = 435,999
 36°10'55.83"
 -99°55'57.88"
 36.1821750"
 -99.9327444"
 NAD83:
 X = 1,398,040
 Y = 436,027
 36°10'55.97"
 -99°55'59.32"
 36.182139"
 -99.9331444"

LAST TAKE POINT
 2103' FNL & 642' FWL
 OF SECTION 25

NAD27:
 X = 1,429,641
 Y = 435,807
 36°10'53.93"
 -99°55'57.87"
 36.1816472"
 -99.9327417"
 NAD83:
 X = 1,398,037
 Y = 435,835
 36°10'54.07"
 -99°55'59.31"
 36.1816861"
 -99.9331417"

FIRST TAKE POINT IN SEC 25
 16' FSL & 598' FWL
 OF SECTION 25

NAD27:
 X = 1,429,547
 Y = 432,647
 36°10'22.67"
 -99°55'58.25"
 36.1729639"
 -99.9328472"
 NAD83:
 X = 1,397,943
 Y = 432,675
 36°10'22.81"
 -99°55'59.69"
 36.1730028"
 -99.9332472"

LAST TAKE POINT IN SEC 36
 10' FNL & 598' FWL
 OF SECTION 36

NAD27:
 X = 1,429,545
 Y = 432,621
 36°10'22.41"
 -99°55'58.27"
 36.1729917"
 -99.9328528"
 NAD83:
 X = 1,397,941
 Y = 432,649
 36°10'22.55"
 -99°55'59.70"
 36.1729306"
 -99.9332500"

FIRST TAKE POINT
 588' FSL & 639' FWL
 OF SECTION 36

NAD27:
 X = 1,429,452
 Y = 427,936
 36°09'36.07"
 -99°55'58.26"
 36.1600194"
 -99.9328500"
 NAD83:
 X = 1,397,848
 Y = 427,964
 36°09'36.21"
 -99°55'59.70"
 36.1600583"
 -99.9332500"

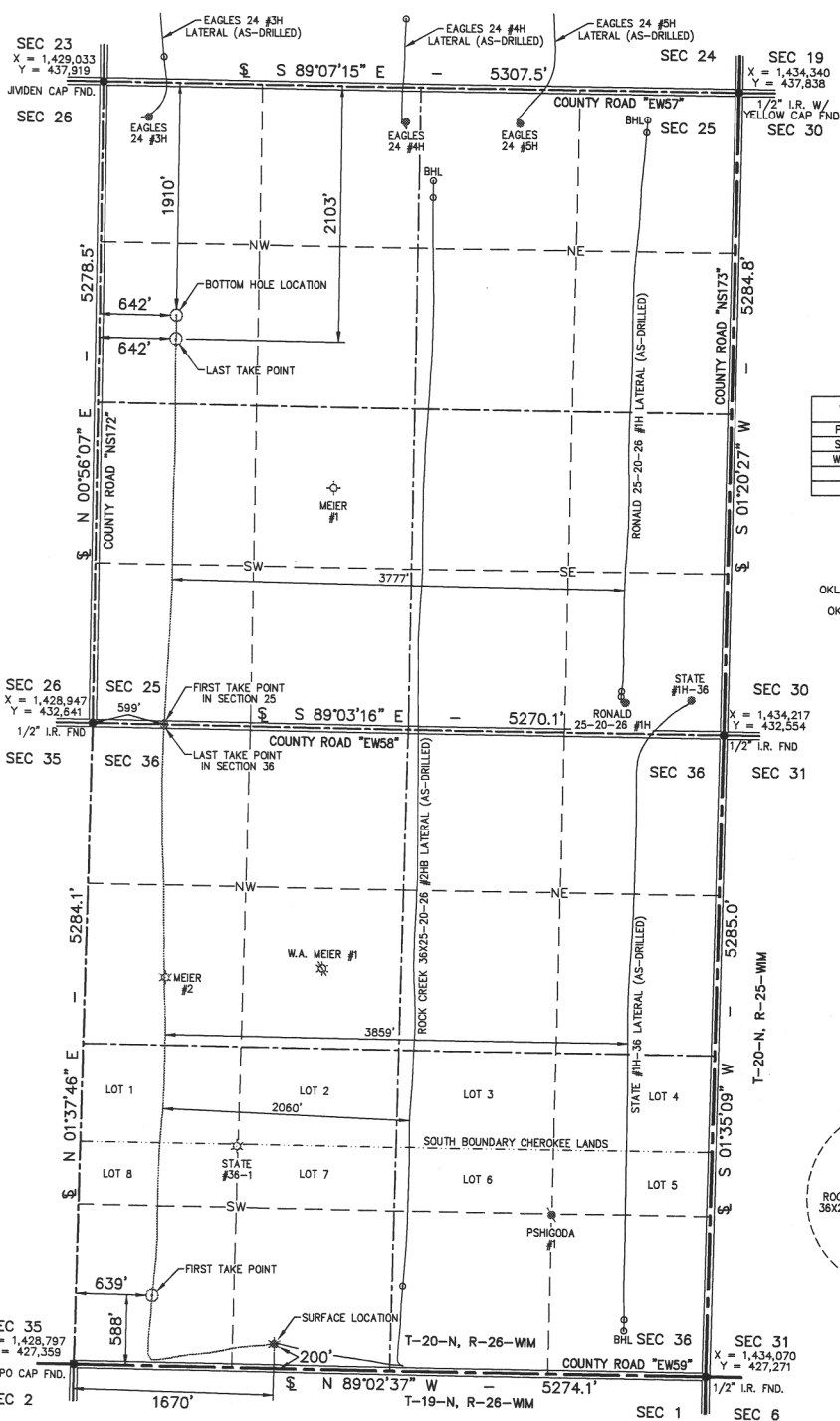
SURFACE LOCATION
 200' FSL & 1670' FWL
 OF SECTION 36

NAD27:
 X = 1,430,472
 Y = 427,531
 36°09'32.26"
 -99°55'45.73"
 36.1589611"
 -99.9293694"
 NAD83:
 X = 1,398,868
 Y = 427,559
 36°09'32.41"
 -99°55'47.17"
 36.1589028"
 -99.9297694"

WELL LEGEND
 ○ PERMITTED
 ⊕ DRY HOLE
 ● OIL
 ✱ GAS
 ✱ OIL/GAS
 ✱ PLUGGED OIL
 ✱ PLUGGED GAS
 ✱ PLUGGED OIL/GAS

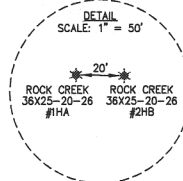
NOTE:

- This plat is intended for Oklahoma Corporation Commission Permit purposes only and is NOT to be relied upon as a boundary survey and is NOT to be used to convey or establish real property interests.
- Bearings and dimensions shown are based on Grid Azimuth and Grid distance. All X,Y coordinates are based on NAD27, Oklahoma North Zone, U.S. Feet.
- X,Y Coordinates were derived from GPS static survey observations and/or RTK survey methods.
- As-drilled data shown on this plat was provided by client and/or third party. Information was not nor has not been field verified by Surveyor.



WELL NAME	DISTANCE TO HORIZ.
PSHIGODA #1	3288'
STATE #36-1	644'
W.A. MEIER #1	1320'
MEIER #2	9'
MEIER #1	1336'

OKLA. COORDINATE SYSTEM
 NAD-27
 OKLAHOMA NORTH ZONE
 U.S. FEET



Scale 1" = 1000'



LAND SURVEYING • GIS
 BEYONDMAPPING.COM
 106 HACKBERRY TRAIL • CANADIAN, TX 76014
 (800) 323-9773 • TEXAS FIRM NO. 10010100
 CERT. OF AUTH. NO. 7796, EXP. JUNE 30, 2020



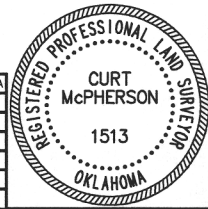
100 ST. PAUL STREET • SUITE 400 • DENVER, CO 80206

THIS IS TO CERTIFY THAT THE ABOVE PLAT WAS PREPARED FROM FIELD NOTES OF ACTUAL SURVEYS MADE BY MYSELF OR OTHERS UNDER MY SUPERVISION AND THAT THE SAME ARE TRUE AND CORRECT TO THE BEST OF MY KNOWLEDGE AND BELIEF.

SIGNED:

DATED: 9/20/19

ROCK CREEK 36X25-20-26 #1HA
FIELD: N/A
DRAWN: MLS
DATE: 9/20/19
CHECKED: CBM
SHEET: 1 OF 1
REVISION:



JOB NO. C218-375-5.1