

Oklahoma Corporation Commission
Oil & Gas Conservation Division
Post Office Box 52000
Oklahoma City, Oklahoma 73152-2000
Rule 165: 10-3-25

Form 1002A

API No.: 35045237610002

Completion Report

Spud Date: December 22, 2018

OTC Prod. Unit No.:

Drilling Finished Date: December 22, 2018

1st Prod Date:

Completion Date: December 22, 2018

Drill Type: STRAIGHT HOLE

Well Name: BROWN 18 3H

Purchaser/Measurer:

Location: ELLIS 19 18N 24W
NE NW NE NE
300 FNL 960 FEL of 1/4 SEC
Derrick Elevation: 0 Ground Elevation: 2248

First Sales Date:

Operator: EOG RESOURCES INC 16231

14701 HERTZ QUAIL SPRINGS PKWY
OKLAHOMA CITY, OK 73134-2646

Completion Type		Location Exception		Increased Density	
	Single Zone	Order No		Order No	
	Multiple Zone	There are no Location Exception records to display.		There are no Increased Density records to display.	
	Commingled				

Casing and Cement							
Type	Size	Weight	Grade	Feet	PSI	SAX	Top of CMT
SURFACE	9 5/8	36	J-55	1052		555	SURFACE

Liner								
Type	Size	Weight	Grade	Length	PSI	SAX	Top Depth	Bottom Depth
There are no Liner records to display.								

Total Depth: 1055

Packer		Plug	
Depth	Brand & Type	Depth	Plug Type
There are no Packer records to display.		There are no Plug records to display.	

Initial Test Data										
Test Date	Formation	Oil BBL/Day	Oil-Gravity (API)	Gas MCF/Day	Gas-Oil Ratio Cu FT/BBL	Water BBL/Day	Pumpin or Flowing	Initial Shut-In Pressure	Choke Size	Flow Tubing Pressure
There are no Initial Data records to display.										
Completion and Test Data by Producing Formation										

Formation Name: NONE		Code:	Class: DRY
Spacing Orders		Perforated Intervals	
Order No	Unit Size	From	To
There are no Spacing Order records to display.		There are no Perf. Intervals records to display.	
Acid Volumes		Fracture Treatments	
NONE		NONE	

Formation	Top
------------------	------------

Were open hole logs run? No
Date last log run:

Were unusual drilling circumstances encountered? No
Explanation:

Other Remarks
THE BROWN 18 3H WELL WAS DRILLED BY EOG RESOURCES, INC. (EOG) TO A TOTAL DEPTH OF 1,055'. THE WELL WAS NOT COMPLETED. 9-5/8" SURFACE CASING HAS BEEN SET AT 1,052'. EOG FEELS THE WELLBORE RETAINS FUTURE UTILITY FOR HORIZONTAL DEVELOPMENT AND PLANS TO RE-ENTER THE WELL AT A LATER DATE. EOG IS IN THE PROCESS OF FILING FOR TEMPORARY EXEMPTION FROM PLUGGING THROUGH A HEARING WITH AN ALJ. PD NUMBER 202100075.

FOR COMMISSION USE ONLY	
Status: Accepted	1146416

API NO. 35-045-23761
OTC PROD. UNIT NO. N/A

Oil and Gas Conservation Division
P.O. Box 52000
Oklahoma City, OK 73152-2000
405-522-0577
OCCCentralProcessing@OCC.OK.GOV



OKLAHOMA
Corporation
Commission

Form 1002A
Rev. 2020

ORIGINAL
AMENDED (Reason)

Rule 165:10-3-25

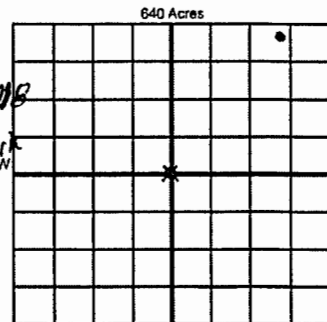
COMPLETION REPORT

TYPE OF DRILLING OPERATION

☒ STRAIGHT HOLE ☐ DIRECTIONAL HOLE ☒ HORIZONTAL HOLE
☐ SERVICE WELL

If directional or horizontal, see reverse for bottom hole location.

COUNTY	ELLIS	SEC	19	TWP	18N	RGE	24W	SPUD DATE	12/22/18
LEASE NAME	BROWN 18	WELL NO.	3H	DRLG FINISHED DATE	12/22/18	DATE OF WELL COMPLETION			N/A 12-22-2018
NE 1/4 NW 1/4 NE 1/4 NE 1/4 FNL 300 FEL 960				1st PROD DATE					N/A Date Well Work Done
ELEVATION	Ground	2248	Latitude	Longitude					
OPERATOR NAME	EOG RESOURCES, INC.			OTC / OCC OPERATOR NO.		16231			
ADDRESS 14701 HERTZ QUAIL SPRINGS PKWY									
CITY OKLAHOMA CITY			STATE OKLAHOMA		ZIP 73134				



LOCATE WELL

COMPLETION TYPE

<input checked="" type="checkbox"/> SINGLE ZONE	
<input type="checkbox"/> MULTIPLE ZONE	
Application Date	
COMINGLED	
Application Date	
LOCATION EXCEPTION ORDER NO.	-711162, 711164
MULTIUNIT ORDER NO.	N/A
INCREASED DENSITY ORDER NO.	-602230, 702073

CASING & CEMENT (Attach Form 1002C)

TYPE	SIZE	WEIGHT	GRADE	FEET	PSI	SAX	TOP OF CMT
CONDUCTOR						555	
SURFACE	9-5/8	36	J-55	1052		480	SURFACE
INTERMEDIATE							
PRODUCTION							
LINER							-1055

PACKER @ BRAND & TYPE PLUG @ TYPE PLUG @ TYPE PLUG @ TYPE TOTAL DEPTH 1055

COMPLETION & TEST DATA BY PRODUCING FORMATION

FORMATION	MARMATON				
SPACING & SPACING ORDER NUMBER	640/586080				
CLASS: Oil, Gas, Dry, Inj, Disp, Comm Disp, Svc	Dry				
PERFORATED INTERVALS	N/A				
ACID/VOLUME	N/A				
FRACTURE TREATMENT (Fluids/Prop Amounts)	N/A				

☐ Min Gas Allowable (165:10-17-7)
OR
☐ Oil Allowable (165:10-13-3)

Purchaser/Measurer N/A
First Sales Date N/A

INITIAL TEST DATA

INITIAL TEST DATE	N/A				
OIL-BBL/DAY					
OIL-GRAVITY (API)					
GAS-MCF/DAY					
GAS-OIL RATIO CU FT/BBL					
WATER-BBL/DAY					
PUMPING OR FLOWING					
INITIAL SHUT-IN PRESSURE					
CHOKE SIZE					
FLOW TUBING PRESSURE					

RECEIVED

MAY 03 2021

OKLAHOMA CORPORATION
COMMISSION

A record of the formations drilled through, and pertinent remarks are presented on the reverse. I declare that I have knowledge of the contents of this report and am authorized by my organization to make this report, which was prepared by me or under my supervision and direction, with the data and facts stated herein to be true, correct, and complete to the best of my knowledge and belief.

SIGNATURE JONI REEDER
NAME (PRINT OR TYPE) JONI REEDER
ADDRESS 14701 HERTZ QUAIL SPRINGS PKWY OKLAHOMA CITY OK 73134
CITY OKLAHOMA CITY STATE OK ZIP 73134
DATE 4/29/21
PHONE NUMBER 405-246-3100
EMAIL ADDRESS joni_reeder@eogresources.com

PLEASE TYPE OR USE BLACK INK ONLY
FORMATION RECORD

Give formation names and tops, if available, or descriptions and thickness of formations drilled through. Show intervals cored or drillstem tested.

LEASE NAME BROWN 18 WELL NO. 3H

NAMES OF FORMATIONS	TOP
<u>MARMATON</u>	<u>9300</u>

FOR COMMISSION USE ONLY

ITD on file ☐ YES ☐ NO

APPROVED ☐ DISAPPROVED ☐ 2) Reject Codes

Were open hole logs run? ☐ yes ☒ no

Date Last log was run _____

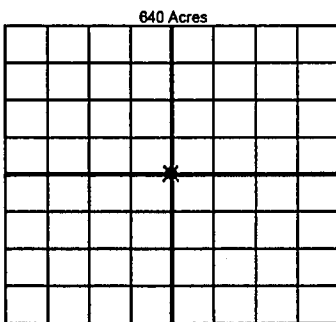
Was CO₂ encountered? ☐ yes ☒ no at what depths? _____

Was H₂S encountered? ☐ yes ☒ no at what depths? _____

Were unusual drilling circumstances encountered? ☐ yes ☒ no

If yes, briefly explain below _____

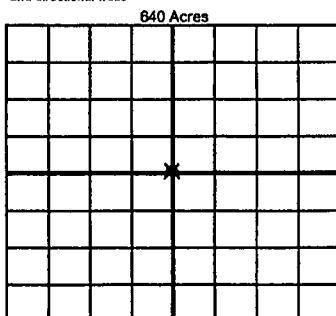
Other remarks: The Brown 18 3H well was drilled by EOG Resources, Inc. (EOG) to a TD of 1055'. The well was not completed. 9-5/8" surface casing has been set at 1052'. EOG feels the wellbore retains future utility for horizontal development and plans to re-enter the well at a later date. EOG is in the process of filing for Temporary Exemption from Plugging through a hearing with an ALJ. PD #202100075



If more than three drainholes are proposed, attach a separate sheet indicating the necessary information.

Direction must be stated in degrees azimuth. Please note, the horizontal drainhole and its end point must be located within the boundaries of the lease or spacing unit.

Directional surveys are required for all drainholes and directional wells



BOTTOM HOLE LOCATION FOR DIRECTIONAL HOLE

SEC	TWP	RGE	COUNTY
1/4	1/4	1/4	1/4
Measured Total Depth		True Vertical Depth	
Feet From 1/4 Sec Lines		BHL From Lease, Unit, or Property Line:	

BOTTOM HOLE LOCATION FOR HORIZONTAL HOLE: (LATERALS)

LATERAL #1

SEC	TWP	RGE	COUNTY
1/4	1/4	1/4	1/4
Depth of Deviation		Radius of Turn	
Measured Total Depth		True Vertical Depth	
Feet From 1/4 Sec Lines		Total Length	
Direction		BHL From Lease, Unit, or Property Line:	

LATERAL #2

SEC	TWP	RGE	COUNTY
1/4	1/4	1/4	1/4
Depth of Deviation		Radius of Turn	
Measured Total Depth		True Vertical Depth	
Feet From 1/4 Sec Lines		Total Length	
Direction		BHL From Lease, Unit, or Property Line:	

LATERAL #3

SEC	TWP	RGE	COUNTY
1/4	1/4	1/4	1/4
Depth of Deviation		Radius of Turn	
Measured Total Depth		True Vertical Depth	
Feet From 1/4 Sec Lines		Total Length	
Direction		BHL From Lease, Unit, or Property Line:	