

Oklahoma Corporation Commission  
Oil & Gas Conservation Division  
Post Office Box 52000  
Oklahoma City, Oklahoma 73152-2000  
Rule 165: 10-3-25

Form 1002A

API No.: 35109220520003

**Completion Report**

Spud Date: October 28, 1997

OTC Prod. Unit No.: 109-102889-0-0000

Drilling Finished Date: November 17, 1997

**Amended**

1st Prod Date: April 28, 1998

Amend Reason: RECOMPLETE / DRILL OUT PLUG 6,515' AND COMMINGLE / SHOW  
SQUEEZE

Completion Date: January 30, 1998

Recomplete Date: March 12, 2020

**Drill Type: STRAIGHT HOLE**

Min Gas Allowable: Yes

Well Name: SUMMIT 1

Purchaser/Measurer: OKLAHOMA GAS  
GATHERING

Location: OKLAHOMA 18 14N 3W  
NW NW SW NW  
1130 FSL 133 FWL of 1/4 SEC  
Derrick Elevation: 1089 Ground Elevation: 1073

First Sales Date: 09/13/2020

Operator: INTERGY PRODUCTION LLC 21212  
PO BOX 342  
14101 SMITHURST RD  
EDMOND, OK 73083-0342

| Completion Type |               | Location Exception                                  |  | Increased Density                                  |  |
|-----------------|---------------|---|--|--|--|
|                 | Single Zone   | Order No  |  | Order No   |  |
|                 | Multiple Zone | There are no Location Exception records to display. |  | There are no Increased Density records to display. |  |
| X               | Commingled    |   |  |  |  |

| Casing and Cement |       |           |       |      |      |     |            |
|-------------------|-------|-----------|-------|------|------|-----|------------|
| Type              | Size  | Weight    | Grade | Feet | PSI  | SAX | Top of CMT |
| SURFACE           | 8 5/8 | 24        | J-55  | 651  | 800  | 350 | SURFACE    |
| PRODUCTION        | 5 1/2 | 15.5 / 17 | K-55  | 7053 | 1900 | 901 | 4912       |

| Liner                                  |      |        |       |        |     |     |           |              |
|--|------|--------|-------|--------|-----|-----|-----------|--------------|
| Type                                   | Size | Weight | Grade | Length | PSI | SAX | Top Depth | Bottom Depth |
| There are no Liner records to display. |      |        |       |        |     |     |           |              |

**Total Depth: 7700**

| Packer                                  |              |
|---|--------------|
| Depth                                   | Brand & Type |
| There are no Packer records to display. |              |

| Plug  |                 |
|-------|-----------------|
| Depth | Plug Type       |
| 6562  | CEMENT RETAINER |
| 6690  | CIBP            |

| Initial Test Data |
|-------------------|
|-------------------|

| Test Date    | Formation                                | Oil BBL/Day | Oil-Gravity (API) | Gas MCF/Day | Gas-Oil Ratio Cu FT/BBL | Water BBL/Day | Pumpin or Flowing | Initial Shut-In Pressure | Choke Size | Flow Tubing Pressure |
|--------------|--|-------------|-------------------|-------------|-------------------------|---------------|-------------------|--------------------------|------------|----------------------|
| Sep 13, 2020 | VIOLA-HUNTON-BARTLESVILLE-BIG LIME-OSWEG |             |                   | 20          |                         | 30            | PUMPING           | 1400                     |            |                      |

#### Completion and Test Data by Producing Formation

Formation Name: VIOLA

Code: 202VIOL

Class: GAS

##### Spacing Orders

| Order No | Unit Size |
|----------|-----------|
| 414177   | 160       |

##### Perforated Intervals

| From | To   |
|------|------|
| 6542 | 6542 |

##### Acid Volumes

There are no Acid Volume records to display.

##### Fracture Treatments

There are no Fracture Treatments records to display.

Formation Name: HUNTON

Code: 269HNTN

Class: GAS

##### Spacing Orders

| Order No | Unit Size |
|----------|-----------|
| 414177   | 160       |

##### Perforated Intervals

| From | To   |
|------|------|
| 6320 | 6342 |

##### Acid Volumes

2,500 GALLONS

##### Fracture Treatments

NONE

Formation Name: BARTLESVILLE

Code: 404BRVL

Class: GAS

##### Spacing Orders

| Order No | Unit Size |
|----------|-----------|
| 414177   | 160       |

##### Perforated Intervals

| From | To   |
|------|------|
| 6140 | 6144 |

##### Acid Volumes

7,000 GALLONS

##### Fracture Treatments

NONE

Formation Name: BIG LIME-OSWEGO

Code: 404BGLO

Class: GAS

##### Spacing Orders

| Order No | Unit Size |
|----------|-----------|
| 414177   | 160       |

##### Perforated Intervals

| From | To   |
|------|------|
| 5956 | 5980 |

##### Acid Volumes

10,000 GALLONS

##### Fracture Treatments

NONE

Formation Name: VIOLA-HUNTON-BARTLESVILLE-BIG LIME-OSWEG

Code:

Class: GAS

| Formation         | Top  |
|-------------------|------|
| DOUGLAS           | 4294 |
| HOGSHOOTER        | 5260 |
| CHECKERBOARD      | 5468 |
| CLEVELAND         | 5480 |
| BIG LIME / OSWEGO | 5910 |
| SKINNER           | 6140 |
| HUNTON            | 6172 |
| VIOLA             | 6456 |

Were open hole logs run? No  
Date last log run:  
Were unusual drilling circumstances encountered? No  
Explanation:

| Other Remarks  |
|--|
| OCC - SPACING ORDER NUMBER 414177 (160) IRREGULAR UNIT COVERING W2 NW SECTION 18-14N-3W AND E2 NE SECTION 13-14N-4W. OCC - (SEE 1002C) SQUEEZE 5 1/2 CASING AT 4,380' WITH 250 SACKS OF CEMENT TO COVER DOUGLAS FORMATION. OCC - COMMINGLE ORDER 421159. |

| FOR COMMISSION USE ONLY |         |
|-------------------------|---------|
| Status: Accepted        | 1145655 |

API NO. 35-109-22052  
OTC PROD. UNIT NO. 109-102889

Oil and Gas Conservation Division  
P.O. Box 52000  
Oklahoma City, OK 73152-2000  
405-522-0577  
OCCCentralProcessing@OCC.OK.GOV

OKLAHOMA

Form 1002A  
Rev. 2020

ORIGINAL AMENDED (Reason) Recomplete / Drill Out Plug 6515' Rule 165:10-3-25  
COMPLETION REPORT

TYPE OF DRILLING OPERATION Recomplete / Drill Out Plug  
☒ STRAIGHT HOLE ☐ DIRECTIONAL HOLE ☐ HORIZONTAL HOLE  
☐ SERVICE WELL  
If directional or horizontal, see reverse for bottom hole location.

COUNTY Oklahoma SEC 18 TWP 14N RGE 3W  
LEASE NAME Summit WELL NO. 1  
NW 1/4 NW 1/4 SW 1/4 NW 1/4 F&L 1130 F&A 133  
ELEVATION Darrick FL 1089 Ground 1073 Latitude Longitude  
OPERATOR NAME Intergy Production LLC OTC / OCC OPERATOR NO. 21212-0  
ADDRESS PO Box 342  
CITY Oklahoma City STATE OK ZIP 73083-0342

COMPLETION TYPE  
☐ SINGLE ZONE  
☐ MULTIPLE ZONE  
☒ COMMINGLED  
Application Date 421159  
LOCATION EXCEPTION ORDER NO.  
MULTIUNIT ORDER NO.  
INCREASED DENSITY ORDER NO.

CASING & CEMENT (Attach Form 1002C)

| TYPE         | SIZE  | WEIGHT  | GRADE | FEET | PSI  | SAX | TOP OF CMT |
|--------------|-------|---------|-------|------|------|-----|------------|
| CONDUCTOR    |       |         |       |      |      |     |            |
| SURFACE      | 8 5/8 | 24      | J-55  | 651  | 800  | 350 | Surface    |
| INTERMEDIATE |       |         |       |      |      |     |            |
| PRODUCTION   | 5 1/2 | 15.5/17 | K-55  | 7053 | 1900 | 901 | 4912       |
| LINER        |       |         |       |      |      |     |            |

PACKER @ BRAND & TYPE PLUG @ 6562 TYPE CMT RET PLUG @ 6690 TYPE CIBP  
PACKER @ BRAND & TYPE PLUG @ TYPE PLUG @ TYPE TOTAL DEPTH 7700

| COMPLETION & TEST DATA BY PRODUCING FORMATION   |            |          |              |           |                   |
|---|------------|----------|--------------|-----------|-------------------|
| FORMATION                                       | Viola      | Hunton   | Bartlesville | Oswego    | Big Line - Oswego |
| SPACING & SPACING ORDER NUMBER                  | 414177-160 |          |              |           |                   |
| CLASS: Oil, Gas, Dry, Inj, Disp, Comm Disp, Svc | Gas        | Gas      | Gas          |           |                   |
| PERFORATED INTERVALS                            | 6542-42    | 6320-42  | 6140-44      | 5956-80   |                   |
| ACID/VOLUME                                     |            | 2500gals | 7000gals     | 10000gals |                   |
| FRACTURE TREATMENT (Fluids/Prop Amounts)        |            | none     | none         | none      |                   |

RECEIVED

OCT 07 2020

Oklahoma Corporation  
Commission

Min Gas Allowable (165:10-17-7) OR Oil Allowable (165:10-13-3) Purchaser/Measuror First Sales Date Oklahoma Gas Gathering 5/13/20

| INITIAL TEST DATA        |  |         |            |  |  |
|--------------------------|--|---------|------------|--|--|
| INITIAL TEST DATE        |  | 9/13/20 | Commingled |  |  |
| OIL-BBL/DAY              |  | -0-     |            |  |  |
| OIL-GRAVITY (API)        |  |         |            |  |  |
| GAS-MCF/DAY              |  | 20      |            |  |  |
| GAS-OIL RATIO CU FT/BBL  |  | nan     |            |  |  |
| WATER-BBL/DAY            |  | 30      |            |  |  |
| PUMPING OR FLOWING       |  | Pump    |            |  |  |
| INITIAL SHUT-IN PRESSURE |  | 1400    |            |  |  |
| CHOKE SIZE               |  |         |            |  |  |
| FLOW TUBING PRESSURE     |  |         |            |  |  |

Jim Franklin 942-3804

**FORMATION RECORD**

Give formation names and tops, if available, or descriptions and thickness of formations drilled through. Show intervals cored or drillstem tested.

| NAMES OF FORMATIONS | TOP  |
|---------------------|------|
| Douglas             | 4294 |
| Hogshooter          | 5260 |
| Checkerboard        | 5468 |
| Cleveland           | 5480 |
| BL/Oswego           | 5910 |
| Skinner             | 6140 |
| Hunton              | 6172 |
| Viola               | 6456 |

| LEASE NAME | SURF | WELL NO. |   |
|------------|------|----------|---|
|            |      |          | 1 |

|                         |  |
|-------------------------|--|
| FOR COMMISSION USE ONLY |  |
| ITD on file             | <input type="checkbox"/> YES <input type="checkbox"/> NO |
| APPROVED                | DISAPPROVED  |
| 2) Reject Codes         |  |
|                         |  |
|                         |  |
|                         |  |
|                         |  |
|                         |  |

Were open hole logs run? ☒ yes ☐ no

Date Last log was run \_\_\_\_\_

Was CO<sub>2</sub> encountered? ☐ yes ☐ no at what depths? \_\_\_\_\_

Was H<sub>2</sub>S encountered? ☐ yes ☐ no at what depths? \_\_\_\_\_

Were unusual drilling circumstances encountered? ☐ yes ☒ no

If yes, briefly explain below \_\_\_\_\_

Other remarks:

OCC - Spacing order 414177 (16D) Irregularly with covering  
1/2 NW section 18-14N-3W & E 1/2 NE section 13-14N-4W  
OCC - (see 1002C) squeeze 5 1/2 casing at 4380' with 250 sacks of  
cement to Case Douglas formation.  
OCC - Commingle 42159

640 Acres

A 10x10 grid with a central asterisk at the intersection of the 5th column and 5th row.

If more than three drainholes are proposed, attach a separate sheet indicating the necessary information.

Direction must be stated in degrees azimuth.  
Please note, the horizontal drainhole and its end  
point must be located within the boundaries of the  
lease or spacing unit.

**Directional surveys are required for all drainholes and directional wells**

640 Acres

**BOTTOM HOLE LOCATION FOR DIRECTIONAL HOLE**

|                      |     |                     |        |   |     |     |     |
|----------------------|-----|---------------------|--------|---|-----|-----|-----|
| SEC                  | TWP | RGE                 | COUNTY |   |     |     |     |
|                      |     |                     |        | 1/4                                     | 1/4 | 1/4 | 1/4 |
|                      |     |                     |        | Feet From 1/4 Sec Lines                 |     |     |     |
| Measured Total Depth |     | True Vertical Depth |        | BHL From Lease, Unit, or Property Line: |     |     |     |

**BOTTOM HOLE LOCATION FOR HORIZONTAL HOLE: (LATERALS)**

| LATERAL #1           |     |     |                     |     |  |   |  |                         |  |
|----------------------|-----|-----|---------------------|-----|--|---|--|-------------------------|--|
| SEC                  | TWP | RGE | COUNTY              |     |  |   |  |                         |  |
| 1/4                  |     | 1/4 |                     | 1/4 |  | 1/4                                     |  | Feet From 1/4 Sec Lines |  |
| Depth of Deviation   |     |     | Radius of Turn      |     |  | Direction                               |  | Total Length            |  |
| Measured Total Depth |     |     | True Vertical Depth |     |  | BHL From Lease, Unit, or Property Line: |  |                         |  |

| LATERAL #2           |     |     |                     |     |  |   |  |                         |  |
|----------------------|-----|-----|---------------------|-----|--|---|--|-------------------------|--|
| SEC                  | TWP | RGE | COUNTY              |     |  |   |  |                         |  |
| 1/4                  |     | 1/4 |                     | 1/4 |  | 1/4                                     |  | Feet From 1/4 Sec Lines |  |
| Depth of Deviation   |     |     | Radius of Turn      |     |  | Direction                               |  | Total Length            |  |
| Measured Total Depth |     |     | True Vertical Depth |     |  | BHL From Lease, Unit, or Property Line: |  |                         |  |

| LATERAL #3 |     |     |                         |
|------------|-----|-----|-------------------------|
| SEC        | TWP | RGE | COUNTY                  |
|            |     |     | Feet From 1/4 Sec Lines |

API NO. 35-109-22052  
OTC PROD. UNIT NO. 109-102889

Oil and Gas Conservation Division  
P.O. Box 52000  
Oklahoma City, OK 73152-2000  
405-522-0577  
OCCentralProcessing@OCC.OK.GOV

1002A  
Addendum OKLAHOMA

Form 1002A  
Rev. 2020

11/1/20  
A: 102889 I

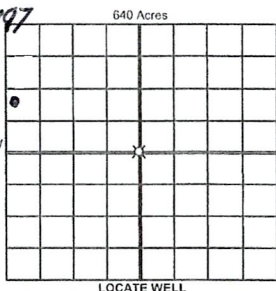
ORIGINAL  
AMENDED (Reason) *Recomplete / Drill Out Plug 6515'* Rule 165:10-3-25  
COMPLETION REPORT

TYPE OF DRILLING OPERATION *Commingle / know squeeze*  
☒ STRAIGHT HOLE ☐ DIRECTIONAL HOLE ☐ HORIZONTAL HOLE  
☐ SERVICE WELL

If directional or horizontal, see reverse for bottom hole location.

COUNTY Oklahoma SEC 18 TWP 14N RGE 3W  
LEASE NAME Summit WELL NO. 1  
NW 1/4 NW 1/4 SW 1/4 NW 1/4 FSL 1130 FSL 133  
ELEVATION Derrick FL 1089 Ground 1073 Latitude Longitude  
OPERATOR NAME Intergy Production LLC OTC / OCC OPERATOR NO. 21212-0  
ADDRESS PO Box 342  
CITY Oklahoma City STATE OK ZIP 73083-0342

SPUD DATE 2/27/20 10-28-1997  
DRG FINISHED DATE 11-17-1997  
DATE OF WELL COMPLETION 1-30-1998  
1st PROD DATE 4-28-1998  
RECOMP DATE 3/12/20



COMPLETION TYPE  
☐ SINGLE ZONE  
☐ MULTIPLE ZONE  
☒ COMMINGLED  
Application Date 421159  
LOCATION EXCEPTION ORDER NO.  
MULTIUNIT ORDER NO.  
INCREASED DENSITY ORDER NO.

CASING & CEMENT (Attach Form 1002C)

| TYPE         | SIZE  | WEIGHT  | GRADE | FEET | PSI  | SAX | TOP OF CMT |
|--------------|-------|---------|-------|------|------|-----|------------|
| CONDUCTOR    |       |         |       |      |      |     |            |
| SURFACE      | 8 5/8 | 24      | J-55  | 651  | 800  | 350 | Surface    |
| INTERMEDIATE |       |         |       |      |      |     |            |
| PRODUCTION   | 5 1/2 | 15.5/17 | K-55  | 7053 | 1900 | 901 | 4912       |
| LINER        |       |         |       |      |      |     |            |

PACKER @ BRAND & TYPE PLUG @ 6562 TYPE CMT RET PLUG @ 6690 TYPE CIBP TOTAL DEPTH 7700  
PACKER @ BRAND & TYPE PLUG @ TYPE TYPE

| FORMATION                                       | Viola      | Hunton   | Bartlesville | Oswego    | Big Line - Oswego |
|---|------------|----------|--------------|-----------|-------------------|
| SPACING & SPACING ORDER NUMBER                  | 414177-160 |          |              |           |                   |
| CLASS: Oil, Gas, Dry, Inj, Disp, Comm Disp, Svc | Gas        | Gas      | Gas          |           |                   |
| PERFORATED INTERVALS                            | 6542-42    | 6320-42  | 6140-44      | 5956-80   |                   |
| ACID/VOLUME                                     |            | 2500gals | 7000gals     | 10000gals |                   |
| FRACTURE TREATMENT (Fluids/Prop Amounts)        |            | none     | none         | none      |                   |

999 VARS

RECEIVED

OCT 07 2020

Oklahoma Corporation  
Commission

Irregular 160A unit:  
W2 NW 18-14N-03W  
&  
E2 NE 13-14N-04W

| INITIAL TEST DATA        | Min Gas Allowable (165:10-17-7) OR Oil Allowable (165:10-13-3) | Purchaser/Measurer First Sales Date | Oklahoma Gas Gathering |
|--------------------------|--|-------------------------------------|------------------------|
| INITIAL TEST DATE        | 9/13/20  |                                     |                        |
| OIL-BBL/DAY              | -0-  |                                     |                        |
| OIL-GRAVITY ( API)       |  |                                     |                        |
| GAS-MCF/DAY              | 20   |                                     |                        |
| GAS-OIL RATIO CU FT/BBL  | non N/A  |                                     |                        |
| WATER-BBL/DAY            | 30   |                                     |                        |
| PUMPING OR FLOWING       | Pump   |                                     |                        |
| INITIAL SHUT-IN PRESSURE | 1400   |                                     |                        |
| CHOKE SIZE               |  |                                     |                        |
| FLOW TUBING PRESSURE     |  |                                     |                        |

Jim Franklin 942-8804