

Oklahoma Corporation Commission  
Oil & Gas Conservation Division  
Post Office Box 52000  
Oklahoma City, Oklahoma 73152-2000  
Rule 165: 10-3-25

Form 1002A

API No.: 35073258820001

**Completion Report**

Spud Date: April 03, 2018

OTC Prod. Unit No.: 07322446200000

Drilling Finished Date: April 23, 2018

1st Prod Date: December 06, 2018

Completion Date: December 06, 2018

**Drill Type:** HORIZONTAL HOLE

Well Name: BARNES 30 O1H

Purchaser/Measurer: MUSTANG GAS

Location: KINGFISHER 31 19N 5W  
NW NW NE NE  
200 FNL 1200 FEL of 1/4 SEC  
Latitude: 36.086354 Longitude: 97.768655  
Derrick Elevation: 1106 Ground Elevation: 1088

First Sales Date: 12/06/2018

Operator: STONE CREEK OPERATING LLC 24022

5728 NW 132ND ST  
OKLAHOMA CITY, OK 73142-4430

Completion Type	
X	Single Zone
	Multiple Zone
	Commingled

Location Exception	
Order No	
694283	

Increased Density	
Order No	
There are no Increased Density records to display.	

Casing and Cement							
Type	Size	Weight	Grade	Feet	PSI	SAX	Top of CMT
CONDUCTOR	20"			55			SURFACE
SURFACE	9.625	40	J55	397	500	155	SURFACE
INTERMEDIATE	7"	29	P110	6420	1800	315	2182
PRODUCTION	4.5	13.5	P110	5064	1650	460	6197

Liner								
Type	Size	Weight	Grade	Length	PSI	SAX	Top Depth	Bottom Depth
There are no Liner records to display.								

**Total Depth: 11265**

Packer	
Depth	Brand & Type
There are no Packer records to display.	

Plug	
Depth	Plug Type
There are no Plug records to display.	

Initial Test Data
-------------------

Test Date	Formation	Oil BBL/Day	Oil-Gravity (API)	Gas MCF/Day	Gas-Oil Ratio Cu FT/BBL	Water BBL/Day	Pumpin or Flowing	Initial Shut-In Pressure	Choke Size	Flow Tubing Pressure
Dec 08, 2018	OSWEGO	69	40	237	3435	300	PUMPING		18/64	69

#### Completion and Test Data by Producing Formation

Formation Name: OSWEGO

Code: 404OSWG

Class: OIL

#### Spacing Orders

Order No

Unit Size

There are no Spacing Order records to display.

#### Perforated Intervals

From

To

6543

11180

#### Acid Volumes

358470GALS 25% GELLED ACID

#### Fracture Treatments

FRAC'D 16 STAGES W/ 358,470 GALS 25% GELLED ACID AND 2,649,108 GALS WATER.

Formation	Top
OSWEGO	6100

Were open hole logs run? No

Date last log run:

Were unusual drilling circumstances encountered? No

Explanation:

#### Other Remarks

There are no Other Remarks.

#### Lateral Holes

Sec: 30 TWP: 19N RGE: 5W County: KINGFISHER

NW NW NE NE

278 FNL 1264 FEL of 1/4 SEC

Depth of Deviation: 5365 Radius of Turn: 715 Direction: 348 Total Length: 4778

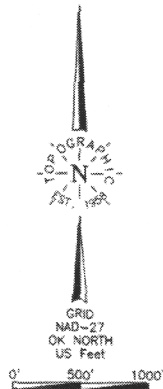
Measured Total Depth: 11265 True Vertical Depth: 6034 End Pt. Location From Release, Unit or Property Line: 278

#### FOR COMMISSION USE ONLY

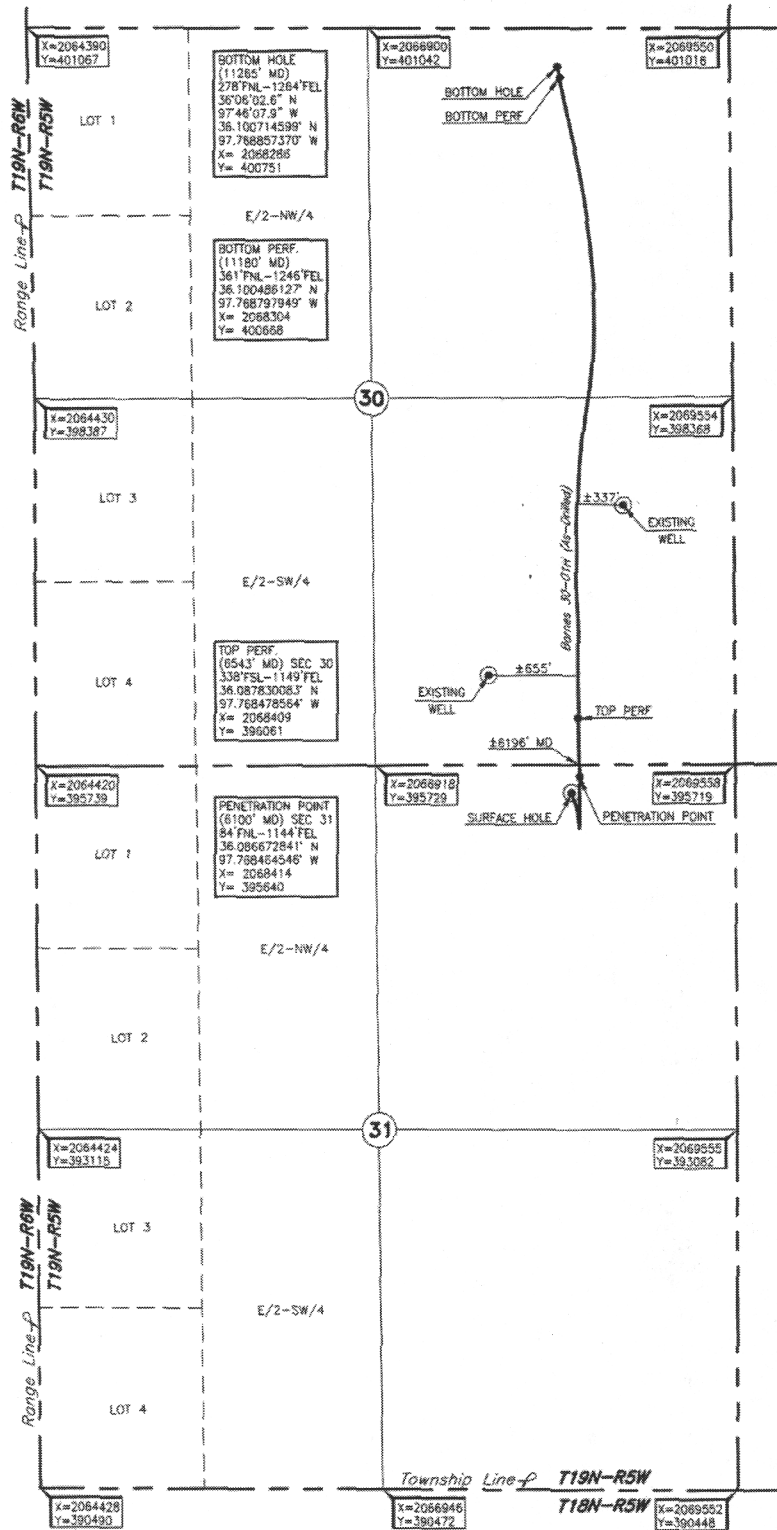
1141332

Status: Accepted

KINGFISHER County, Oklahoma  
200' FNL-1200' FEL Section 31 Township 19N Range 5W 1.M.



Operator: STONE CREEK ENERGY, LLC  
Lease Name: BARNES  
Topography & Vegetation Loc. fell on level pod under construction.  
Well No.: 30-01H  
ELEVATION: 1088 Gr. at Level Pod  
Good Drill Site? Yes  
Reference Stakes or Alternate Location  
Stakes Set None  
Best Accessibility to Location From North of county road  
Distance & Direction From Hennessey, OK, go 40.5 mi. North, then 47.5 mi. East on St. Hwy. 51,  
then 42.0 mi. South to the NE Cor. of Sec. 31-T19N-R5W



DATUM: NAD-27  
LAT: 36°05'10.9"N  
LONG: 97°46'07.2"W  
LAT: 36.086353878°N  
LONG: 97.768655243°W  
STATE PLANE  
COORDINATES: (US Feet)  
ZONE: OK NORTH  
X: 2068358  
Y: 395523

304905 Date of Drawing: Oct. 15, 2018  
Invoice # 287283 Date Staked: Jan. 25, 2018 JP

**FINAL AS DRILLED PLAT**

AS-DRILLED INFORMATION  
FURNISHED BY STONE CREEK ENERGY, LLC