

Oklahoma Corporation Commission
Oil & Gas Conservation Division
Post Office Box 52000
Oklahoma City, Oklahoma 73152-2000
Rule 165: 10-3-25

Form 1002A

API No.: 35111275260000

Completion Report

Spud Date: June 30, 2019

OTC Prod. Unit No.:

Drilling Finished Date: July 02, 2019

1st Prod Date: November 10, 2019

Completion Date: September 14, 2019

Drill Type: STRAIGHT HOLE

Well Name: REDHAWK 13-2

Purchaser/Measurer:

Location: OKMULGEE 13 13N 14E
C S2 NW SE
1650 FSL 660 FWL of 1/4 SEC
Derrick Elevation: 0 Ground Elevation: 710

First Sales Date:

Operator: EASTOK ENERGY PARTNERS LLC 23343

933 NW 164TH ST STE 3
EDMOND, OK 73013-1044

Completion Type		Location Exception		Increased Density	
X	Single Zone	Order No		Order No	
	Multiple Zone	There are no Location Exception records to display.		There are no Increased Density records to display.	
	Commingled				

Casing and Cement								
Type		Size	Weight	Grade	Feet	PSI	SAX	Top of CMT
SURFACE		8 5/8	24	J-55	172		80	SURFACE
PRODUCTION		5 1/2	17	J-55	1960		100	1015

Liner								
Type	Size	Weight	Grade	Length	PSI	SAX	Top Depth	Bottom Depth
There are no Liner records to display.								

Total Depth: 2975

Packer		Plug	
Depth	Brand & Type	Depth	Plug Type
There are no Packer records to display.		There are no Plug records to display.	

Initial Test Data										
Test Date	Formation	Oil BBL/Day	Oil-Gravity (API)	Gas MCF/Day	Gas-Oil Ratio Cu FT/BBL	Water BBL/Day	Pumpin or Flowing	Initial Shut-In Pressure	Choke Size	Flow Tubing Pressure
Nov 10, 2019	DUTCHER	3	38			8	PUMPING	650		

Completion and Test Data by Producing Formation

Formation Name: DUTCHER

Code: 403DTCR

Class: OIL

Spacing Orders

Order No	Unit Size
UNSPACED	

Perforated Intervals

From	To
1908	1920

Acid Volumes

60 GALLONS 7 1/2% HCL

Fracture Treatments

20,000 POUNDS 20/40 SAND, 1,200 BARRELS WATER, 7 1/2% ACID

Formation	Top
BARTLESVILLE	740
BOOCH	1262
HARTSHORNE	1690
DUTCHER	1906
CROMWELL	2140
WILCOX	2810

Were open hole logs run? Yes

Date last log run: September 14, 2019

Were unusual drilling circumstances encountered? No

Explanation:

Other Remarks

There are no Other Remarks.

FOR COMMISSION USE ONLY

1144458

Status: Accepted

API NO. 111 27526
OTC PROD. UNIT NO.

(PLEASE TYPE OR USE BLACK INK ONLY)

OKLAHOMA CORPORATION COMMISSION
Oil & Gas Conservation Division
Post Office Box 52000
Oklahoma City, Oklahoma 73152-2000
Rule 165:10-3-25

RECEIVED

Form 1002A
Rev. 2009

DEC 19 2019

☒ ORIGINAL
☐ AMENDED (Reason)

COMPLETION REPORT

TYPE OF DRILLING OPERATION

☒ STRAIGHT HOLE ☐ DIRECTIONAL HOLE ☐ HORIZONTAL HOLE
☐ SERVICE WELL

If directional or horizontal, see reverse for bottom hole location.

COUNTY Okmulgee SEC 13 TWP 13N RGE 14E
LEASE NAME Redhawk WELL NO. 13-2
C 1/4 S/2 1/4 NW 1/4 SE 1/4 FSL OF 1/4 SEC 1650' FWL OF 1/4 SEC 660'
ELEVATION Derrick FL Ground 710 Latitude (if known) Longitude (if known)
OPERATOR NAME EASTOK ENERGY PARTNERS, LLC OTC / OCC OPERATOR NO. 23343
ADDRESS 933 N.W.164TH ST., STE 3
CITY OKLAHOMA CITY STATE Ok ZIP 73120

COMPLETION TYPE

☒ SINGLE ZONE
☐ MULTIPLE ZONE
☐ COMMINGLED
☐ LOCATION EXCEPTION
☐ ORDER NO.
☐ INCREASED DENSITY
☐ ORDER NO.

CASING & CEMENT (Attach Form 1002C)

TYPE	SIZE	WEIGHT	GRADE	FEET	PSI	SAX	TOP OF CMT
CONDUCTOR							
SURFACE	8 5/8	24#	J-55	172		80	Surf
INTERMEDIATE							
PRODUCTION	5 1/2	17#	J-55	1960		100	1015
LINER							
						TOTAL DEPTH	2,975

PACKER @ BRAND & TYPE PLUG @ TYPE PLUG @ TYPE
PACKER @ BRAND & TYPE PLUG @ TYPE PLUG @ TYPE

COMPLETION & TEST DATA BY PRODUCING FORMATION

FORMATION Dutcher
SPACING & SPACING ORDER NUMBER unspaced
CLASS: Oil, Gas, Dry, Inj, Disp, Comm Disp, Svc Oil
PERFORATED INTERVALS 1908- 20'
ACID/VOLUME 60 gal, 7 1/2 HCL
FRACTURE TREATMENT (Fluids/Prop Amounts) 20,000lbs -20/40 Sand
1200 bbl wtr, 7-1/2% Acid

Min Gas Allowable (165:10-17-7)

Gas Purchaser/Measurer

☐ OR
Oil Allowable (165:10-13-3)

First Sales Date

INITIAL TEST DATA

INITIAL TEST DATE 11/10/2019
OIL-BBL/DAY 3
OIL-GRAVITY (API) 38
GAS-MCF/DAY 0
GAS-OIL RATIO CU FT/BBL
WATER-BBL/DAY 8
PUMPING OR FLOWING ☒ Pumping
INITIAL SHUT-IN PRESSURE 650
CHOKE SIZE
FLOW TUBING PRESSURE

AS SUBMITTED

A record of the formations drilled through, and pertinent remarks are presented on the reverse. I declare that I have knowledge of the contents of this report and am authorized by my organization to make this report, which was prepared by me or under my supervision and direction, with the data and facts stated herein to be true, correct, and complete to the best of my knowledge and belief.

SIGNATURE John Roberts DATE 12/3/19 PHONE NUMBER 476-1718
ADDRESS 933 NW 164th St, 5-3 Edmond, OK 73013 EMAIL ADDRESS carusa10@aol.com

PLEASE TYPE OR USE BLACK INK ONLY

FORMATION RECORD

Give formation names and tops, if available, or descriptions and thickness of formations drilled through. Show intervals cored or drillstem tested.

LEASE NAME Redhawk

WELL NO. 13-2

NAMES OF FORMATIONS	TOP
Bartlesville	740'
Booch	1262'
Hartshorne	1690'
Dutcher	1906'
Cromwell	2140'
Wilcox	2810'

FOR COMMISSION USE ONLY

ITD on file ☐ YES ☐ NO

APPROVED _____ DISAPPROVED _____

2) Reject Codes _____

Were open hole logs run? ☒ yes ☐ no

Date Last log was run 9/14/2019

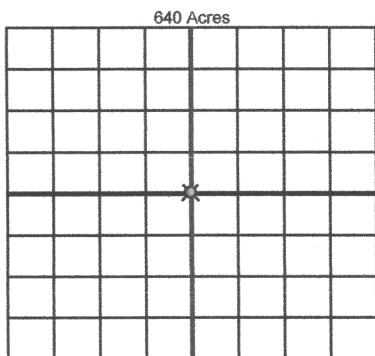
Was CO₂ encountered? ☐ yes ☒ no at what depths? _____

Was H₂S encountered? ☐ yes ☒ no at what depths? _____

Were unusual drilling circumstances encountered? ☐ yes ☒ no

If yes, briefly explain below _____

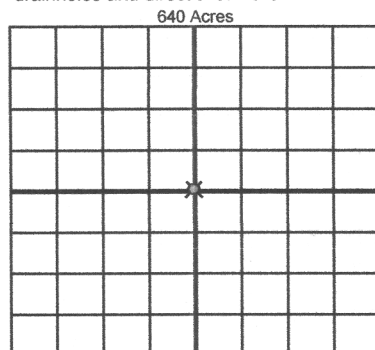
Other remarks: _____



If more than three drainholes are proposed, attach a separate sheet indicating the necessary information.

Direction must be stated in degrees azimuth. Please note, the horizontal drainhole and its end point must be located within the boundaries of the lease or spacing unit.

Directional surveys are required for all drainholes and directional wells.



BOTTOM HOLE LOCATION FOR DIRECTIONAL HOLE

SEC	TWP	RGE	COUNTY
Spot Location		Feet From 1/4 Sec Lines	
1/4	1/4	1/4	1/4
Measured Total Depth		BHL From Lease, Unit, or Property Line:	
True Vertical Depth		FSL	
		FWL	

BOTTOM HOLE LOCATION FOR HORIZONTAL HOLE: (LATERALS)

LATERAL #1

SEC	TWP	RGE	COUNTY
Spot Location		Feet From 1/4 Sec Lines	
1/4	1/4	1/4	1/4
Depth of Deviation		Total Length	
Radius of Turn		Direction	
Measured Total Depth		BHL From Lease, Unit, or Property Line:	
True Vertical Depth		FSL	
		FWL	

LATERAL #2

SEC	TWP	RGE	COUNTY
Spot Location		Feet From 1/4 Sec Lines	
1/4	1/4	1/4	1/4
Depth of Deviation		Total Length	
Radius of Turn		Direction	
Measured Total Depth		BHL From Lease, Unit, or Property Line:	
True Vertical Depth		FSL	
		FWL	

LATERAL #3

SEC	TWP	RGE	COUNTY
Spot Location		Feet From 1/4 Sec Lines	
1/4	1/4	1/4	1/4
Depth of Deviation		Total Length	
Radius of Turn		Direction	
Measured Total Depth		BHL From Lease, Unit, or Property Line:	
True Vertical Depth		FSL	
		FWL	