

Oklahoma Corporation Commission  
Oil & Gas Conservation Division  
Post Office Box 52000  
Oklahoma City, Oklahoma 73152-2000  
Rule 165: 10-3-25

Form 1002A

API No.: 35109225040000

**Completion Report**

Spud Date: April 15, 2021

OTC Prod. Unit No.:

Drilling Finished Date: April 21, 2021

1st Prod Date:

Completion Date: April 23, 2021

**Drill Type: DIRECTIONAL HOLE**

Well Name: SALSMAN 1

Purchaser/Measurer:

Location: OKLAHOMA 32 11N 2W  
NW SW NW SW  
1882 FSL 231 FWL of 1/4 SEC  
Latitude: 35.382387 Longitude: -97.440127  
Derrick Elevation: 1298 Ground Elevation: 1280

First Sales Date:

Operator: STEPHENS & JOHNSON OPERATING CO 19113  
PO BOX 2249  
811 6TH ST STE 300  
WICHITA FALLS, TX 76307-2249

Completion Type		Location Exception		Increased Density	
	Single Zone	Order No		Order No	
	Multiple Zone	There are no Location Exception records to display.		There are no Increased Density records to display.	
	Commingled				

Casing and Cement							
Type	Size	Weight	Grade	Feet	PSI	SAX	Top of CMT
CONDUCTOR	16	40	J-55	80		5	SURFACE
SURFACE	8 5/8	24	J-55	1112		600	SURFACE

Liner								
Type	Size	Weight	Grade	Length	PSI	SAX	Top Depth	Bottom Depth
There are no Liner records to display.								

**Total Depth: 6700**

Packer		Plug	
Depth	Brand & Type	Depth	Plug Type
There are no Packer records to display.		There are no Plug records to display.	

Initial Test Data										
Test Date	Formation	Oil BBL/Day	Oil-Gravity (API)	Gas MCF/Day	Gas-Oil Ratio Cu FT/BBL	Water BBL/Day	Pumpin or Flowing	Initial Shut-In Pressure	Choke Size	Flow Tubing Pressure
There are no Initial Data records to display.										

**Completion and Test Data by Producing Formation**

Formation Name: NONE

Code:

Class: PLUG AND ABANDON

Formation	Top
OSWEGO TVD	6149
MCLISH TVD	6310

Were open hole logs run? Yes

Date last log run: April 22, 2021

Were unusual drilling circumstances encountered? No

Explanation:

**Other Remarks**

LAI D DOWN DIRECTIONAL TOOLS BEFORE DRILLING SIMPSON SANDS. LAST SCIENTIFIC DIRECTIONAL SURVEY AT 6,312'. BOTTOM HOME LOCATION MEASUREMENTS COME FROM OPEN HOLE LOGGING DIRECTIONAL DATA DOWN TO 6,632' AND THEN EXTRAPOLATED TO TOTAL DEPTH.

**Bottom Holes**

Sec: 32 TWP: 11N RGE: 2W County: OKLAHOMA

NE SW SW NW

384 FSL 352 FWL of 1/4 SEC

Depth of Deviation: 0 Radius of Turn: 0 Direction: 0 Total Length: 0

Measured Total Depth: 6700 True Vertical Depth: 6565 End Pt. Location From Release, Unit or Property Line: 352

**FOR COMMISSION USE ONLY**

1147000

Status: Accepted

API NO. 35-109-22504  
OTC PROD.  
UNIT NO.

Oil and Gas Conservation Division  
P.O. Box 52000  
Oklahoma City, OK 73152-2000  
405-522-0577  
OCCCentralProcessing@OCC.OK.GOV



OKLAHOMA  
Corporation  
Commission

Form 1002A  
Rev. 2020



ORIGINAL  
AMENDED (Reason)

Rule 165:10-3-25

COMPLETION REPORT

TYPE OF DRILLING OPERATION

☐ STRAIGHT HOLE ☒ DIRECTIONAL HOLE ☐ HORIZONTAL HOLE  
☐ SERVICE WELL

If directional or horizontal, see reverse for bottom hole location.

COUNTY OKLAHOMA SEC 32 TWP 11N RGE 2W

LEASE NAME SALSMAN WELL NO. 1

NW 1/4 SW 1/4 NW 1/4 SW 1/4 FUL 1882 PVL 231

ELEVATION 1298 Ground 1280 Latitude 35.382387 Longitude -97.440127

OPERATOR NAME STEPHENS & JOHNSON OPERATING CO OTC / OCC OPERATOR NO. 19113-0

ADDRESS P O BOX 2249

CITY WICHITA FALLS STATE TX ZIP 76307

SPUD DATE 4-15-21

DRLG FINISHED DATE 4-21-21

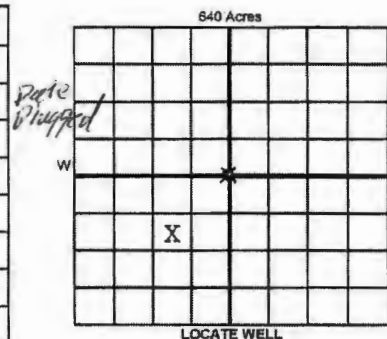
DATE OF WELL COMPLETION 4-23-21

1st PROD DATE

RECOMP DATE

Longitude -97.440127

OTC / OCC OPERATOR NO. 19113-0



LOCATE WELL

COMPLETION TYPE

☒ SINGLE ZONE  
☐ MULTIPLE ZONE  
☐ COMMINGLED  
LOCATION EXCEPTION ORDER NO. 717711  
MULTIUNIT ORDER NO.  
INCREASED DENSITY ORDER NO.

CASING & CEMENT (Attach Form 1002C)

TYPE	SIZE	WEIGHT	GRADE	FEET	PSI	SAX	TOP OF CMT
CONDUCTOR	16"	40	J-55	80'		5.3 YD	SURF
SURFACE	8 5/8"	24	J-55	1112'	600	650	SURF
INTERMEDIATE							
PRODUCTION							
LINER							

PACKER @ BRAND & TYPE PLUG @ TYPE PLUG @ TYPE TOTAL DEPTH 6700

COMPLETION & TEST DATA BY PRODUCING FORMATION

FORMATION						
SPACING & SPACING ORDER NUMBER	359606					
CLASS: Oil, Gas, Dry, Inj, Disp, Comm Disp, Svc	DRY P+A					
PERFORATED INTERVALS						
ACID/VOLUME						
FRACTURE TREATMENT (Fluids/Prop Amounts)						

Min Gas Allowable (168:10-17)

OR

Oil Allowable (168:10-13)

Purchaser/Measurer

First Sales Date

INITIAL TEST DATA

INITIAL TEST DATE						
OIL-BBL/DAY						
OIL-GRAVITY ( API)						
GAS-MCF/DAY						
GAS-OIL RATIO CU FT/88L						
WATER-BBL/DAY						
PUMPING OR FLOWING						
INITIAL SHUT-IN PRESSURE						
CHOKE SIZE						
FLOW TUBING PRESSURE						

A record of the formations drilled through, and pertinent remarks are presented on the reverse. I declare that I have knowledge of the contents of this report and am authorized by my organization to make this report, which was prepared by me or under my supervision and direction, with the data and facts stated herein to be true, correct, and complete to the best of my knowledge and belief.

SIGNATURE BOB GILMORE 6/10/21  
P O Box 2249 WICHITA FALLS TX 76307 DATE PHONE NUMBER  
ADDRESS CITY STATE ZIP bgilmore@sjoc.net  
EMAIL ADDRESS

PLEASE TYPE OR USE BLACK INK ONLY  
FORMATION RECORD

Give formation names and tops, if available, or descriptions and thickness of formations drilled through. Show intervals cored or drillstem tested.

LEASE NAME SALSMAN WELL NO. 1

NAMES OF FORMATIONS	TOP
Oswego TVD	6149
McLish TVD	6310

FOR COMMISSION USE ONLY

ITD on file ☐ YES ☐ NO

APPROVED ☐ DISAPPROVED ☐ 2) Reject Codes

\_\_\_\_\_

\_\_\_\_\_

\_\_\_\_\_

\_\_\_\_\_

Were open hole logs run? ☒ yes ☐ no

Date Last log was run 3-8-2014 4-22-2021

Was CO<sub>2</sub> encountered? ☐ yes ☒ no at what depths? \_\_\_\_\_

Was H<sub>2</sub>S encountered? ☐ yes ☒ no at what depths? \_\_\_\_\_

Were unusual drilling circumstances encountered? ☐ yes ☒ no

If yes, briefly explain below

Other remarks: Laid down directional tools before drilling Simpson Sands. Last Scientific Directional survey at 6312'.

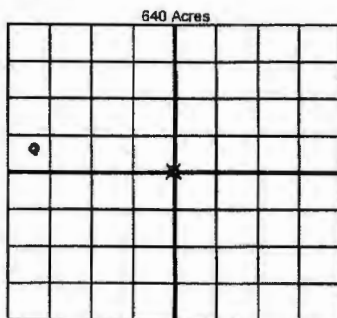
BTM Hole location measurements come from openhole logging directional data down to 6632' and then extrapolated to TD

\_\_\_\_\_

\_\_\_\_\_

\_\_\_\_\_

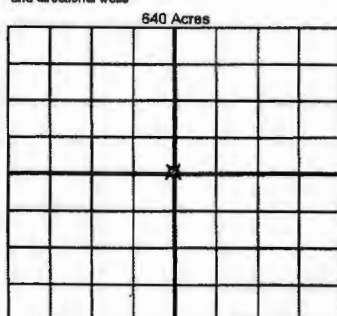
\_\_\_\_\_



If more than three drainholes are proposed, attach a separate sheet indicating the necessary information.

Direction must be stated in degrees azimuth. Please note, the horizontal drainhole and its end point must be located within the boundaries of the lease or spacing unit.

Directional surveys are required for all drainholes and directional wells



BOTTOM HOLE LOCATION FOR DIRECTIONAL HOLE

SEC 32	TWP 11N	RGE 2W	COUNTY OKLAHOMA
NE 1/4 SW 1/4 SW 1/4 NW 1/4		Feet From 1/4 Sec Lines	FSL 384 FWL 352
Measured Total Depth 6700		True Vertical Depth 6565	BHL From Lease, Unit, or Property Line: 352'

BOTTOM HOLE LOCATION FOR HORIZONTAL HOLE: (LATERALS)

LATERAL #1

SEC	TWP	RGE	COUNTY
1/4	1/4	1/4	1/4
Feet From 1/4 Sec Lines			
Depth of Deviation	Radius of Turn	Direction	Total Length
Measured Total Depth	True Vertical Depth	BHL From Lease, Unit, or Property Line:	

LATERAL #2

SEC	TWP	RGE	COUNTY
1/4	1/4	1/4	1/4
Feet From 1/4 Sec Lines			
Depth of Deviation	Radius of Turn	Direction	Total Length
Measured Total Depth	True Vertical Depth	BHL From Lease, Unit, or Property Line:	

LATERAL #3

SEC	TWP	RGE	COUNTY
1/4	1/4	1/4	1/4
Feet From 1/4 Sec Lines			
Depth of Deviation	Radius of Turn	Direction	Total Length
Measured Total Depth	True Vertical Depth	BHL From Lease, Unit, or Property Line:	