

Oklahoma Corporation Commission  
Oil & Gas Conservation Division  
Post Office Box 52000  
Oklahoma City, Oklahoma 73152-2000  
Rule 165: 10-3-25

Form 1002A

API No.: 35137072360001

**Completion Report**

Spud Date: January 28, 1960

OTC Prod. Unit No.:

Drilling Finished Date:

**Amended**

1st Prod Date:

Amend Reason: CONVERT SALTWATER DISPOSAL TO PRODUCTION WELL

Completion Date: April 21, 1960

Recomplete Date: January 30, 2021

**Drill Type: STRAIGHT HOLE**

Min Gas Allowable: Yes

Well Name: KINDER-MACKECHNIE 1

Purchaser/Measurer:

Location: STEPHENS 24 2S 8W  
SE NW SE NE  
825 FSL 1815 FWL of 1/4 SEC  
Latitude: 34.37132 Longitude: -97.98489  
Derrick Elevation: 1059 Ground Elevation: 0

First Sales Date:

Operator: TURNER R L OIL COMPANY LLC 22280

1503 W BOIS D ARC AVE  
DUNCAN, OK 73533-4826

Completion Type		Location Exception		Increased Density	
X	Single Zone	Order No		Order No	
	Multiple Zone	There are no Location Exception records to display.		There are no Increased Density records to display.	
	Commingled				

Casing and Cement							
Type	Size	Weight	Grade	Feet	PSI	SAX	Top of CMT
PRODUCTION	4 1/2			1560		100	

Liner								
Type	Size	Weight	Grade	Length	PSI	SAX	Top Depth	Bottom Depth
There are no Liner records to display.								

**Total Depth: 1561**

Packer	
Depth	Brand & Type
There are no Packer records to display.	

Plug	
Depth	Plug Type
There are no Plug records to display.	

Initial Test Data										
Test Date	Formation	Oil BBL/Day	Oil-Gravity (API)	Gas MCF/Day	Gas-Oil Ratio Cu FT/BBL	Water BBL/Day	Pumpin or Flowing	Initial Shut-In Pressure	Choke Size	Flow Tubing Pressure
Jan 30, 2021	COMANCHE	2	31				PUMPING			

Completion and Test Data by Producing Formation			
Formation Name: COMANCHE		Code: 602CMNC	Class: OIL
<b>Spacing Orders</b>		<b>Perforated Intervals</b>	
<b>Order No</b>	<b>Unit Size</b>	<b>From</b>	<b>To</b>
There are no Spacing Order records to display.		1499	1501
<b>Acid Volumes</b>		<b>Fracture Treatments</b>	
There are no Acid Volume records to display.		There are no Fracture Treatments records to display.	

Formation	Top
COMANCHE SANDS	1499
COMANCHE SANDS	1501

Were open hole logs run? No  
Date last log run:  
  
Were unusual drilling circumstances encountered? No  
Explanation:

Other Remarks
WELL CONVERTED SALTWATER DISPOSAL (PERMIT NUMBER 51711 BACK TO OIL PRODUCTION JANUARY 31, 2021

FOR COMMISSION USE ONLY	
Status: Accepted	1146106

API NO 35-13707236  
OTC PROD  
UNIT NO

Oil and Gas Conservation Division  
P.O. Box 52000  
Oklahoma City, OK 73152-2000  
405-522-0577  
OCCCentralProcessing@OCC.OK.GOV



OKLAHOMA  
Corporation  
Commission

Received  
1-25-2021  
OKD

Form 1002A  
Rev. 2020



ORIGINAL  
AMENDED (Reason)

Convert SWD to Production Well

Rule 165:10-3-25

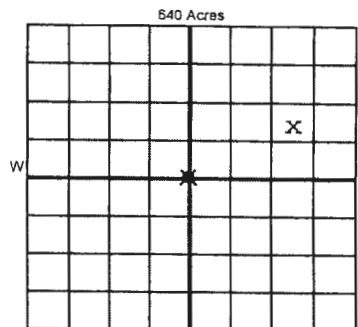
COMPLETION REPORT

TYPE OF DRILLING OPERATION

☒ STRAIGHT HOLE ☐ DIRECTIONAL HOLE ☐ HORIZONTAL HOLE  
☐ SERVICE WELL

If directional or horizontal, see reverse for bottom hole location.

COUNTY	Stephens	SEC	24	TWP	2S	RGE	8W	SPUD DATE	01/28/1960
LEASE NAME	Kinder-Mackechie			WELL NO.	1	DATE OF WELL COMPLETION	7-21-1960	DRLG FINISHED DATE	
SE 1/4 nw 1/4 SE 1/4 NE 1/4	FSL 825 FWL 1815			RECOMP DATE	1-30-2021	1st PROD DATE			
ELEVATION	1059	Ground	Latitude	34.37132	Longitude	-97.98489			
OPERATOR NAME	R.L. Turner Oil Company LLC			OTC / OCC OPERATOR NO.	22280				
ADDRESS	1503 West Bois D Arc								
CITY	Duncan	STATE	OK	ZIP	73533				



COMPLETION TYPE

<input checked="" type="radio"/> SINGLE ZONE	
<input type="radio"/> MULTIPLE ZONE	
<input type="radio"/> COMMINGLED	
LOCATION EXCEPTION ORDER NO.	
MULTIUNIT ORDER NO.	
INCREASED DENSITY ORDER NO.	

CASING & CEMENT (Attach Form 1002C)

TYPE	SIZE	WEIGHT	GRADE	FEET	PSI	SAX	TOP OF CMT
CONDUCTOR							
SURFACE							
INTERMEDIATE							
PRODUCTION	4 1/2			1,560'		100	
LINER							

PACKER @ \_\_\_\_\_ BRAND & TYPE \_\_\_\_\_ PLUG @ \_\_\_\_\_ TYPE \_\_\_\_\_ PLUG @ \_\_\_\_\_ TYPE \_\_\_\_\_ TOTAL DEPTH 1,561'  
PACKER @ \_\_\_\_\_ BRAND & TYPE \_\_\_\_\_ PLUG @ \_\_\_\_\_ TYPE \_\_\_\_\_ PLUG @ \_\_\_\_\_ TYPE \_\_\_\_\_

COMPLETION & TEST DATA BY PRODUCING FORMATION

FORMATION	Comanche Sands						
SPACING & SPACING ORDER NUMBER							
CLASS: Oil, Gas, Dry, Inj, Disp, Comm Disp, Svc	Oil						
PERFORATED INTERVALS	1499 - 1501						
	8 perfs						
	4 perfs per foot						
ACID/VOLUME							
FRACURE TREATMENT (Fluids/Prop Amounts)							



Min Gas Allowable (165:10-17-7)

OR

Oil Allowable (165:10-13-3)

Purchaser/Measurer

First Sales Date

INITIAL TEST DATA

INITIAL TEST DATE	01-21-1960	01-30-21					
OIL-BBL/DAY	10	2					
OIL-GRAVITY ( API)	31	31					
GAS-MCF/DAY							
GAS-OIL RATIO CU FT/BBL	0	0					
WATER-BBL/DAY							
PUMPING OR FLOWING		Pumping					
INITIAL SHUT-IN PRESSURE							
CHOKE SIZE							
FLOW TUBING PRESSURE							

A record of the formations drilled through, and pertinent remarks are presented on the reverse. I declare that I have knowledge of the contents of this report and am authorized by my organization to make this report, which was prepared by me or under my supervision and direction, with the data and facts stated herein to be true, correct, and complete to the best of my knowledge and belief.

SIGNATURE	Randall L Turner - Managing Member	DATE	01/31/21	PHONE NUMBER	(580) 225 1100
1503 West Bois D Arc	Duncan	OK	73533	riturner1967@cableone.net	
ADDRESS	CITY	STATE	ZIP	EMAIL ADDRESS	

PLEASE TYPE OR USE BLACK INK ONLY

FORMATION RECORD

Give formation names and tops, if available, or descriptions and thickness of formations drilled through. Show intervals cored or drillstem tested.

LEASE NAME

Kinder-Mackenzie

WELL NO.

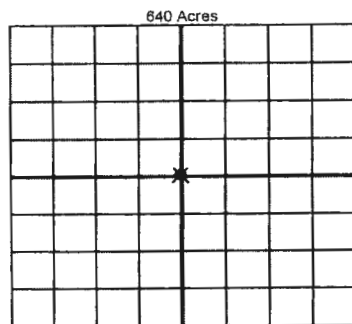
1

NAMES OF FORMATIONS	TOP
Comanche Sands	1499
Comanche Sands	1501

FOR COMMISSION USE ONLY	
ITD on file	<input type="checkbox"/> YES <input type="checkbox"/> NO
APPROVED	DISAPPROVED
2) Reject Codes	

Were open hole logs run?	<input type="radio"/> yes <input type="radio"/> no
Date Last log was run	
Was CO <sub>2</sub> encountered?	<input type="radio"/> yes <input type="radio"/> no at what depths?
Was H <sub>2</sub> S encountered?	<input type="radio"/> yes <input type="radio"/> no at what depths?
Were unusual drilling circumstances encountered?	<input type="radio"/> yes <input type="radio"/> no
If yes, briefly explain below	

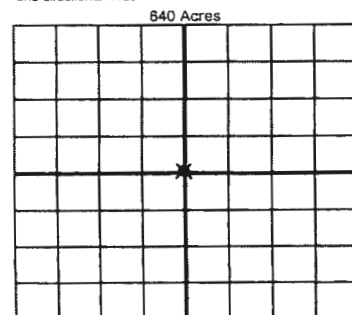
Other remarks: Well Converted SWD (Permit # 51711) back to Oil production 01-31-2021



If more than three drainholes are proposed, attach a separate sheet indicating the necessary information

Direction must be stated in degrees azimuth. Please note, the horizontal drainhole and its end point must be located within the boundaries of the lease or spacing unit

Directional surveys are required for all drainholes and directional wells



BOTTOM HOLE LOCATION FOR DIRECTIONAL HOLE

SEC	TWP	RGE	COUNTY
1/4	1/4	1/4	1/4
Measured Total Depth		True Vertical Depth	Feet From 1/4 Sec Lines
BHL From Lease, Unit, or Property Line:			

BOTTOM HOLE LOCATION FOR HORIZONTAL HOLE: (LATERALS)

LATERAL #1			
SEC	TWP	RGE	COUNTY
1/4	1/4	1/4	1/4
Depth of Deviation		Radius of Turn	Direction
Measured Total Depth		True Vertical Depth	Total Length
BHL From Lease, Unit, or Property Line:			

LATERAL #2			
SEC	TWP	RGE	COUNTY
1/4	1/4	1/4	1/4
Depth of Deviation		Radius of Turn	Direction
Measured Total Depth		True Vertical Depth	Total Length
BHL From Lease, Unit, or Property Line:			

LATERAL #3			
SEC	TWP	RGE	COUNTY
1/4	1/4	1/4	1/4
Depth of Deviation		Radius of Turn	Direction
Measured Total Depth		True Vertical Depth	Total Length
BHL From Lease, Unit, or Property Line:			