

Oklahoma Corporation Commission
Oil & Gas Conservation Division
Post Office Box 52000
Oklahoma City, Oklahoma 73152-2000
Rule 165: 10-3-25

Form 1002A

API No.: 35019037430001

Completion Report

Spud Date: February 22, 1953

OTC Prod. Unit No.:

Drilling Finished Date: March 06, 1953

Amended

1st Prod Date: March 09, 1953

Amend Reason: RECOMPLETE SHALLOWER DEESE / REPORT UNREPORTED DEESE
(TUSSY) PERFORATIONS NOW UNDER CIBP

Completion Date: March 11, 1953

Recomplete Date: April 12, 2021

Drill Type: STRAIGHT HOLE

Well Name: WALTER NEUSTADT 17

Purchaser/Measurer:

Location: CARTER 34 1S 3W
C NW NE SE
2310 FSL 1650 FWL of 1/4 SEC
Latitude: 34.425736 Longitude: -97.49531
Derrick Elevation: 1066 Ground Elevation: 1053

First Sales Date:

Operator: SCOUT ENERGY MANAGEMENT LLC 23138

13800 MONTFORT DRIVE SUITE 100
DALLAS, TX 75240-4344

Completion Type	
X	Single Zone
	Multiple Zone
	Commingled

Location Exception
Order No
There are no Location Exception records to display.

Increased Density
Order No
There are no Increased Density records to display.

Casing and Cement							
Type	Size	Weight	Grade	Feet	PSI	SAX	Top of CMT
CONDUCTOR				365			
SURFACE	10 3/4	32	LW	260		150	SURFACE
PRODUCTION	7	20	J-55	3794		200	2250

Liner								
Type	Size	Weight	Grade	Length	PSI	SAX	Top Depth	Bottom Depth
There are no Liner records to display.								

Total Depth: 3800

Packer	
Depth	Brand & Type
2573	BAKER

Plug	
Depth	Plug Type
3290	CAST IRON
3688	CAST IRON

Initial Test Data

Test Date	Formation	Oil BBL/Day	Oil-Gravity (API)	Gas MCF/Day	Gas-Oil Ratio Cu FT/BBL	Water BBL/Day	Pumpin or Flowing	Initial Shut-In Pressure	Choke Size	Flow Tubing Pressure
Apr 26, 2021	DEESE	6				356	PUMPING			100

Completion and Test Data by Producing Formation

Formation Name: DEESE

Code: 404DEESS

Class: OIL

Spacing Orders

Order No	Unit Size
There are no Spacing Order records to display.	

Perforated Intervals

From	To
2631	2648
2690	2725

Acid Volumes

1,400 GALLONS 15% NEFE WITH 20 BARRELS FLUSH & 680 GALLONS 15% NEFE WITH 19 BARRELS FLUSH

Fracture Treatments

There are no Fracture Treatments records to display.

Formation Name: DEESE

Code: 404DEESS

Class: DRY

Spacing Orders

Order No	Unit Size
There are no Spacing Order records to display.	

Perforated Intervals

From	To
3302	3314
3388	3428
3541	3570
3625	3654

Acid Volumes

There are no Acid Volume records to display.

Fracture Treatments

There are no Fracture Treatments records to display.

Formation Name: DEESE

Code: 404DEESS

Class: DRY

Spacing Orders

Order No	Unit Size
There are no Spacing Order records to display.	

Perforated Intervals

From	To
3731	3742

Acid Volumes

There are no Acid Volume records to display.

Fracture Treatments

There are no Fracture Treatments records to display.

Formation	Top
TUSSY	3728
CARPENTER	3778

Were open hole logs run? No

Date last log run:

Were unusual drilling circumstances encountered? No

Explanation:

Other Remarks

CIBP SET AT 3688' TO ISOLATE PERF'S IN DEESE (CARPENTER) FORMATION FROM 3731' - 3742'.
CIBP SET AT 3290' BAIL WITH 2 SXS CMT ON TOP TO ISOLATE PERF'S IN DEESE (TUSSY) FORMATION FROM 3302'TO 3654'
PERFORATE SHALLOWER DEESE ZONE 2631' TO 2725' STIMULATE THEN PUT ON PRODUCTION

FOR COMMISSION USE ONLY

1147530

Status: Accepted

Image behind 1002A API 019-03743-01

WALTER NEUSTADT #17
NW-NE-SE-SEC 34-1S-3W, CARTER COUNTY, OKLAHOMA
SURF LOC: 2310' FSL, 1650' FWL
ELEV: 1053' GL
KB: 1066'
API #: 35019 03743

Nc

STATUS: INACTIVE PRODUCER, TA'D 8/1991
CURRENT PROD: 0 BOPD, 0 BWPD

CONDUCTOR CSG:

UNK SIZE, UNK WEIGHT, TO 365'

SURFACE CSG:

10-3/4", 32#, 8V, SET AT 260' W/ 150 SX CMT TO SFC

PRODUCTION CSG:

7", 20#, TO 3794' W/ 200 SX CMT

02/22/53 SPUD DATE
03/20/53 COMPLETED

LOGS: ELOG, GRN LOG

PRODUCTION TBG:

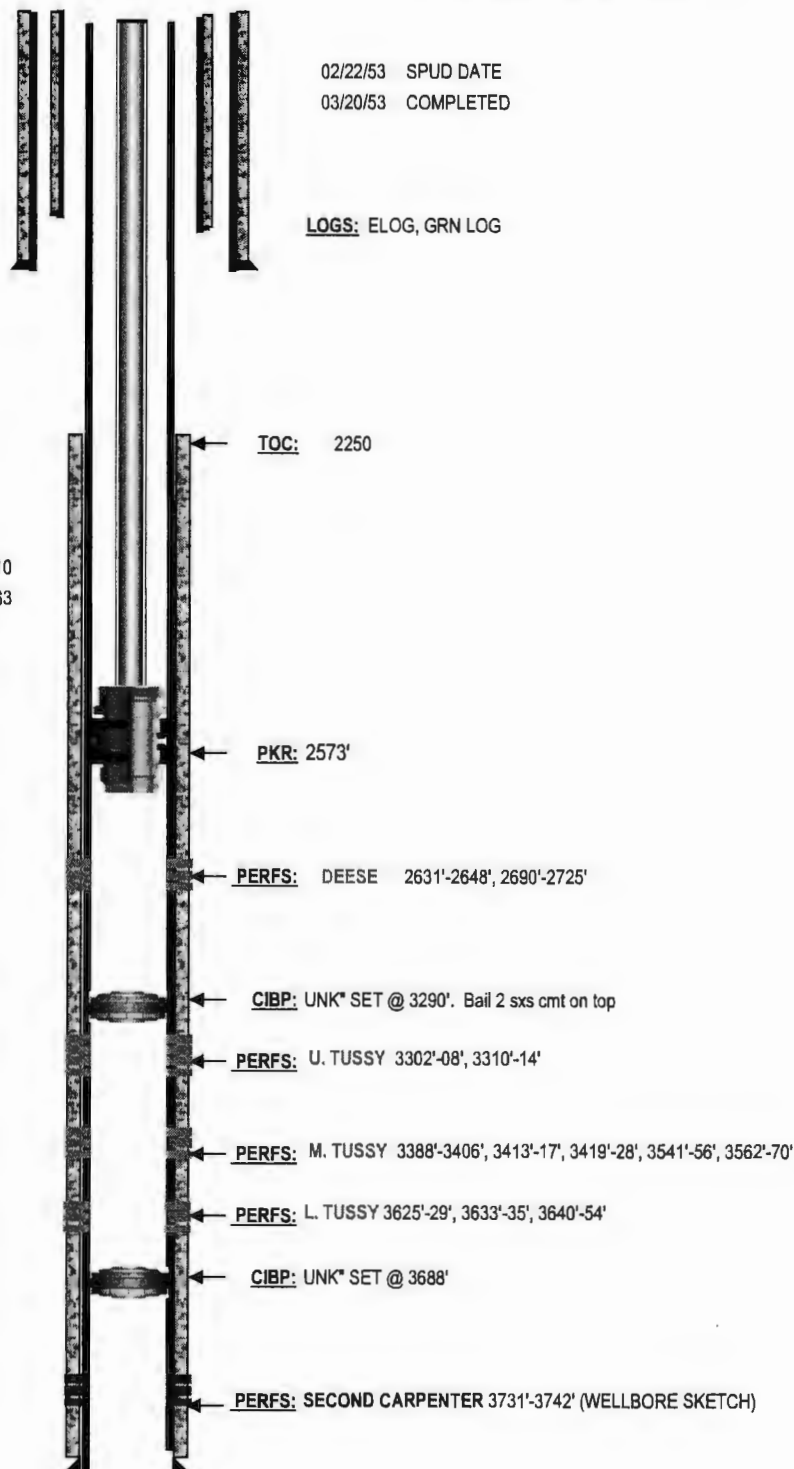
1	2-3/8" SEAT NIPPLE	1.10
104	2-3/8" JTS TUBING	3225.63
1	2-3/8" x 2-7/8" SWAGE AND COUPLING	
1	7" X 2-7/8" BAKER AD-1 TENSION PKR	
EOT		3226.73

ROD STRING:

N/A

PUMPING UNIT:

N/A



Schematic Not Drawn to Scale