

Oklahoma Corporation Commission
Oil & Gas Conservation Division
Post Office Box 52000
Oklahoma City, Oklahoma 73152-2000
Rule 165: 10-3-25

Form 1002A

API No.: 35137276130001

Completion Report

Spud Date: July 30, 2020

OTC Prod. Unit No.:

Drilling Finished Date: August 07, 2020

1st Prod Date:

Completion Date: November 29, 2021

Drill Type: STRAIGHT HOLE

SERVICE WELL

Well Name: FRENSELY 18

Purchaser/Measurer:

Location: STEPHENS 34 1S 5W
C SW NE NE
1650 FSL 1650 FWL of 1/4 SEC
Derrick Elevation: 0 Ground Elevation: 1190

First Sales Date:

Operator: GILBY SERVICES LLC 24430
PO BOX 36
301960 HIGHWAY 7
VELMA, OK 73491-0036

Completion Type		Location Exception		Increased Density	
X	Single Zone	Order No		Order No	
	Multiple Zone	There are no Location Exception records to display.		There are no Increased Density records to display.	
	Commingled				

Casing and Cement							
Type	Size	Weight	Grade	Feet	PSI	SAX	Top of CMT
PRODUCTION	5 1/2	15.5	J-55	1090		320	SURFACE

Liner								
Type	Size	Weight	Grade	Length	PSI	SAX	Top Depth	Bottom Depth
There are no Liner records to display.								

Total Depth: 1100

Packer		Plug	
Depth	Brand & Type	Depth	Plug Type
670	TENSION	There are no Plug records to display.	

Initial Test Data										
Test Date	Formation	Oil BBL/Day	Oil-Gravity (API)	Gas MCF/Day	Gas-Oil Ratio Cu FT/BBL	Water BBL/Day	Pumpin or Flowing	Initial Shut-In Pressure	Choke Size	Flow Tubing Pressure
There are no Initial Data records to display.										

Completion and Test Data by Producing Formation

Formation Name: PERMIAN

Code: 459PRMN

Class: INJ

Spacing Orders**Order No****Unit Size**

There are no Spacing Order records to display.

Perforated Intervals**From****To**

702

706

762

766

992

1000

1056

1066

Acid Volumes

There are no Acid Volume records to display.

Fracture Treatments

There are no Fracture Treatments records to display.

Formation	Top
PERMIAN	702
PERMIAN	762
PERMIAN	992
PERMIAN	1056

Were open hole logs run? Yes

Date last log run: April 08, 2021

Were unusual drilling circumstances encountered? No

Explanation:

Other Remarks

OCC - UIC PERMIT 2100903002

FOR COMMISSION USE ONLY

1146393

Status: Accepted

API NO 137 27613
OTC PROD
UNIT NO

(PLEASE TYPE OR USE BLACK INK ONLY)

OKLAHOMA CORPORATION COMMISSION
Oil & Gas Conservation Division
Post Office Box 52000
Oklahoma City, Oklahoma 73152-2000
Rule 165 10-3-25

Form 1002A
Rev 2009

☒ ORIGINAL
☐ AMENDED (Reason)

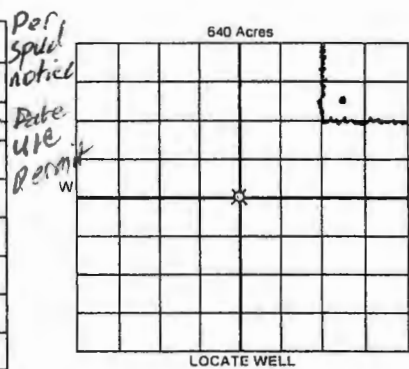
COMPLETION REPORT

TYPE OF DRILLING OPERATION
☒ STRAIGHT HOLE ☐ DIRECTIONAL HOLE ☐ HORIZONTAL HOLE
☒ SERVICE WELL
If directional or horizontal, see reverse for bottom hole location

SPUD DATE 8-28-20
DRLG FINISHED DATE 8-22-20
DATE OF WELL COMPLETION 11-29-21

COUNTY Stephens SEC 34 TWP 1S RGE 5W
LEASE NAME Frenesley WELL NO 18
C 1/4 SW 1/4 NE 1/4 NE 1/4 FSL OF 1/4 SEC 1650 FWL OF 1/4 SEC 1650
ELEVATION Derrick FL Ground 1190 Latitude (if known) Longitude (if known)
OPERATOR NAME Gilby Services LLC OTC / OCC OPERATOR NO 24430
ADDRESS P.O. Box 36
CITY Velma STATE OK ZIP 73491

1st PROD DATE
RECOMP DATE



COMPLETION TYPE
☒ SINGLE ZONE
☐ MULTIPLE ZONE
Application Date
☐ COMMINGLED
Application Date
LOCATION EXCEPTION ORDER NO
INCREASED DENSITY ORDER NO

TYPE	SIZE	WEIGHT	GRADE	FEET	PSI	SAX	TOP OF CMT
CONDUCTOR							
SURFACE							
INTERMEDIATE							
PRODUCTION	5 1/2	15.5	J55	1098'		160	Surface
LINER							

PACKER @ 670 BRAND & TYPE Tension PLUG @ TYPE PLUG @ TYPE
PACKER @ BRAND & TYPE PLUG @ TYPE PLUG @ TYPE
COMPLETION & TEST DATA BY PRODUCING FORMATION 459 PRMN

TOTAL DEPTH 1100'

FORMATION	Permian						
SPACING & SPACING ORDER NUMBER							
CLASS Oil, Gas, Dry, Inj. Disp, Comm Disp, Svc	Injection						
PERFORATED INTERVALS	702'-706'	1056'-1066'					
	762'-766'						
	992'-1000'						
ACID/VOLUME							
FRACTURE TREATMENT (Fluids/Prop Amounts)							

Min Gas Allowable (165:10-17-7)

Gas Purchaser/Measurer

☐ OR

First Sales Date

Oil Allowable (165:10-13-3)

INITIAL TEST DATE							
OIL-BBL/DAY							
OIL-GRAVITY (API)							
GAS-MCF/DAY							
GAS-OIL RATIO CU FT/BBL							
WATER-BBL/DAY							
PUMPING OR FLOWING							
INITIAL SHUT-IN PRESSURE							
CHOKE SIZE							
FLOW TUBING PRESSURE							

RECEIVED

APR 28 2021

Oklahoma Corporation
Commission

A record of the formations drilled through, and pertinent remarks are presented on the reverse. I declare that I have knowledge of the contents of this report and am authorized by my organization to make this report, which was prepared by me or under my supervision and direction, with the data and facts stated herein to be true, correct, and complete to the best of my knowledge and belief.

Keely Gilby
SIGNATURE
P.O. Box 36
ADDRESS
Velma
CITY
OK
STATE
73491
ZIP
4-26-21
DATE
580-444-3377
PHONE NUMBER
Rellygilby@live.com
EMAIL ADDRESS

PLEASE TYPE OR USE BLACK INK ONLY
FORMATION RECORD

Give formation names and tops, if available, or descriptions and thickness of formations drilled through. Show intervals cored or drillstem tested.

NAMES OF FORMATIONS	TOP
Permian	702'-706'
	762'-766'
	992'-1000'
	1056'-1066'

LEASE NAME Frensley WELL NO 18

FOR COMMISSION USE ONLY

ITD on file ☐ YES ☐ NO

APPROVED _____ DISAPPROVED _____ 2) Reject Codes _____

Were open hole logs run? X yes no

Date Last log was run 4-8-21 CBL open hole 8-22-2020

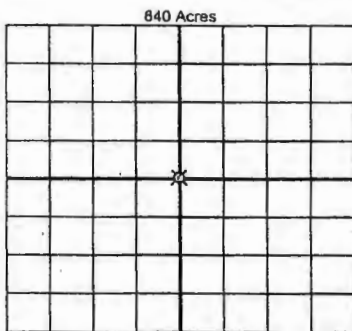
Was CO₂ encountered? yes X no at what depths? _____

Was H₂S encountered? yes X no at what depths? _____

Were unusual drilling circumstances encountered? yes X no

If yes, briefly explain below _____

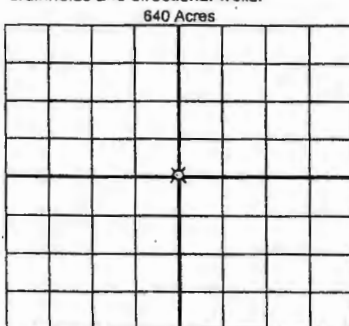
Other remarks: OCC - UIC permit 2100903002



If more than three drainholes are proposed, attach a separate sheet indicating the necessary information

Direction must be stated in degrees azimuth. Please note, the horizontal drainhole and its end point must be located within the boundaries of the lease or spacing unit.

Directional surveys are required for all drainholes and directional wells.



BOTTOM HOLE LOCATION FOR DIRECTIONAL HOLE

SEC	TWP	RGE	COUNTY
Spot Location			
1/4	1/4	1/4	1/4
Measured Total Depth		True Vertical Depth	Feet From 1/4 Sec Lines FSL FWL
BHL From Lease, Unit, or Property Line:			

BOTTOM HOLE LOCATION FOR HORIZONTAL HOLE: (LATERALS)

LATERAL #1

SEC	TWP	RGE	COUNTY
Spot Location			
1/4	1/4	1/4	1/4
Depth of Deviation		Radius of Turn	Direction
Measured Total Depth		True Vertical Depth	Total Length
BHL From Lease, Unit, or Property Line:			

LATERAL #2

SEC	TWP	RGE	COUNTY
Spot Location			
1/4	1/4	1/4	1/4
Depth of Deviation		Radius of Turn	Direction
Measured Total Depth		True Vertical Depth	Total Length
BHL From Lease, Unit, or Property Line:			

LATERAL #3

SEC	TWP	RGE	COUNTY
Spot Location			
1/4	1/4	1/4	1/4
Depth of Deviation		Radius of Turn	Direction
Measured Total Depth		True Vertical Depth	Total Length
BHL From Lease, Unit, or Property Line:			