

Oklahoma Corporation Commission
Oil & Gas Conservation Division
Post Office Box 52000
Oklahoma City, Oklahoma 73152-2000
Rule 165: 10-3-25

Form 1002A

API No.: 35049252020000

Completion Report

Spud Date: September 16, 2018

OTC Prod. Unit No.: 049-224812-0-0000

Drilling Finished Date: October 07, 2018

1st Prod Date: December 01, 2018

Completion Date: November 27, 2018

Drill Type: HORIZONTAL HOLE

Well Name: CUDD 1-9H

Purchaser/Measurer: WOODFORD EPRESS

Location: GARVIN 9 3N 3W
NW NW NE NE
300 FNL 1260 FEL of 1/4 SEC
Latitude: 34.752834326 Longitude: -97.514250555
Derrick Elevation: 1036 Ground Elevation: 1011

First Sales Date: 12/01/2018

Operator: RED ROCKS OIL & GAS OPERATING LLC 22649

1321 N ROBINSON AVE STE A
OKLAHOMA CITY, OK 73103-4919

Completion Type	
X	Single Zone
	Multiple Zone
	Commingled

Location Exception
Order No
N/A

Increased Density
Order No
N/A

Casing and Cement							
Type	Size	Weight	Grade	Feet	PSI	SAX	Top of CMT
CONDUCTOR	20			105			SURFACE
SURFACE	9 5/8	40	J-55	1577		1015	SURFACE
PRODUCTION	5 1/2	20	P-110	14962		1670	7000

Liner								
Type	Size	Weight	Grade	Length	PSI	SAX	Top Depth	Bottom Depth
There are no Liner records to display.								

Total Depth: 14986

Packer	
Depth	Brand & Type
There are no Packer records to display.	

Plug	
Depth	Plug Type
There are no Plug records to display.	

Initial Test Data

Test Date	Formation	Oil BBL/Day	Oil-Gravity (API)	Gas MCF/Day	Gas-Oil Ratio Cu FT/BBL	Water BBL/Day	Pumpin or Flowing	Initial Shut-In Pressure	Choke Size	Flow Tubing Pressure
Dec 01, 2018	WOODFORD	21	58	3450	164286	353	FLOWING	980	42/128	660

Completion and Test Data by Producing Formation	
Formation Name: WOODFORD	Code: 319WDFD
Class: GAS	

Spacing Orders	
Order No	Unit Size
672400	640

Perforated Intervals	
From	To
9936	14838

Acid Volumes	
15,000 GALLONS 15% ACID	

Fracture Treatments	
85,996 POUNDS 40/70 WHITE SAND, 251,614 BARRELS SLICK WATER	

Formation	Top
TONKAWA	6090
CHECKERBOARD	7035
GIBSON	7545
HART	7710
SPRINGER	7855
BLACK SHALE	8340
CANEY	8815
SYCAMORE	8950
WOODFORD	9215
WOODFORD LP	9300

Were open hole logs run? No

Date last log run:

Were unusual drilling circumstances encountered? No

Explanation:

Other Remarks
OCC - THIS WELL'S COMPLETION INTERVAL IS WITHIN THE PARAMETERS ALLOWED BY THE SPACING ORDER.

Lateral Holes
Sec: 9 TWP: 3N RGE: 3W County: GARVIN SW SW SW SE 53 FSL 2591 FEL of 1/4 SEC Depth of Deviation: 9038 Radius of Turn: 700 Direction: 179 Total Length: 4962 Measured Total Depth: 14986 True Vertical Depth: 9464 End Pt. Location From Release, Unit or Property Line: 53

FOR COMMISSION USE ONLY	
Status: Accepted	1143451

API NO. 049-25202
OTC PROD. UNIT NO. 049-224812

PLEASE TYPE OR USE BLACK INK ONLY
NOTE:

Attach copy of original 1002A
if recompletion or reentry.

OKLAHOMA CORPORATION COMMISSION
Oil & Gas Conservation Division
Post Office Box 52000
Oklahoma City, Oklahoma 73152-2000
Rule 165:10-3-25

RECEIVED

AUG 01 2019

Oklahoma Corporation
Commission

Form 1002A
Rev. 2009

☒ ORIGINAL
☐ AMENDED (Reason)

COMPLETION REPORT

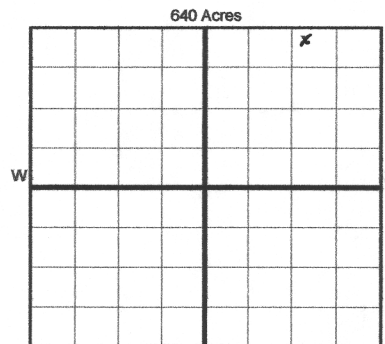
TYPE OF DRILLING OPERATION

☐ STRAIGHT HOLE ☐ DIRECTIONAL HOLE ☒ HORIZONTAL HOLE
SERVICE WELL

If directional or horizontal, see reverse for bottom hole location.

COUNTY Garvin SEC 9 TWP 03N RGE 03W
LEASE NAME Cudd
NW 1/4 NW 1/4 NE 1/4 NE 1/4
ELEVATION 1036' Ground 1011'
N Derrick
OPERATOR NAME Red Rocks Oil & Gas Operating LLC
ADDRESS 1321 N. Robinson Ave, Suite 1A
CITY Oklahoma City STATE OK ZIP 73103

SPUD DATE 9/16/2018
DRLG FINISHED DATE 10/7/2018
DATE OF WELL COMPLETION 11/27/2018
1st PROD DATE 12/1/2018
RECOMP DATE
Longitude 97.514250555
Latitude (if known) 34.752874226



LOCATE WELL

COMPLETION TYPE

☒ SINGLE ZONE
☐ MULTIPLE ZONE
Application Date
COMINGLED
Application Date
LOCATION N/A
EXCEPTION ORDER N/A
INCREASED DENSITY N/A
ORDER NO.

CASING & CEMENT (Form 1002C must be attached)

TYPE	SIZE	WEIGHT	GRADE	FEET	PSI	SAX	TOP OF CMT
CONDUCTOR	20			105			Surface
SURFACE	9 5/8	40	J55	1577		1015	Surface
INTERMEDIATE							
PRODUCTION	5 1/2	20	P110	14,962		1670	7000
LINER							

PACKER @ BRAND & TYPE PLUG @ TYPE PLUG @ TYPE
PACKER @ BRAND & TYPE PLUG @ TYPE PLUG @ TYPE

TOTAL DEPTH 14,986

COMPLETION & TEST DATA BY PRODUCING FORMATION

FORMATION	Woodford	Simpson	Viola	Hunter	
SPACING & SPACING ORDER NUMBER	640 Acres/672400				
CLASS: Oil, Gas, Dry, Inj, Disp, Comm Disp, Svc	Gas				
PERFORATED INTERVALS	9936'-14,838' OA				
ACID/VOLUME	15,000gals 15% Acid				
FRACTURE TREATMENT (Fluids/Prop Amounts)	85,996 # 40/70 White Sand; 251,614 bbls Slick Water				

Monitor
Report to FracFocus

Min Gas Allowable (165:10-17-7)

Gas Purchaser/Measurer

Woodford Epress



OR

First Sales Date

12/1/2018

INITIAL TEST DATA

Oil Allowable (165:10-13-3)

INITIAL TEST DATE	12/1/2018
OIL-BBL/DAY	21
OIL-GRAVITY (API)	58
GAS-MCF/DAY	3450
GAS-OIL RATIO CU FT/BBL	164,286
WATER-BBL/DAY	353
PUMPING OR FLOWING	Flowing
INITIAL SHUT-IN PRESSURE	980 psi
CHOKE SIZE	42/128
FLOW TUBING PRESSURE	660 psi

AS SUBMITTED

A record of the formations drilled through and pertinent remarks are presented on the reverse. I declare that I have knowledge of the contents of this report and am authorized by my organization to make this report, which was prepared by me or under my supervision and direction, with the data and facts stated herein to be true, correct, and complete to the best of my knowledge and belief.

Randy Stalcup

7/29/2019

405-600-3065

SIGNATURE

NAME (PRINT OR TYPE)

DATE

PHONE NUMBER

1321 N. Robinson, Suite 1A

Oklahoma City

OK

73103

merri.oliver@redrocksresources.com

ADDRESS

CITY

STATE

ZIP

EMAIL ADDRESS

PLEASE TYPE OR USE BLACK INK ONLY
FORMATION RECORD

Give formation names and tops, if available, or descriptions and thickness of formations drilled through. Show intervals cored or drillstem tested.

LEASE NAME Cudd WELL NO. 1-9H

NAMES OF FORMATIONS	TOP
TONKAWA	6,090
CHECKERBOARD	7,035
GIBSON	7,545
HART	7,710
SPRINGER	7,855
BLACK SHALE	8,340
CANEY	8,815
SYCAMORE	8,950
WOODFORD	9,215
WOODFOR LP	9,300

FOR COMMISSION USE ONLY

ITD on file ☐ YES ☐ NO

APPROVED _____ DISAPPROVED _____

2) Reject Codes _____

Were open hole logs run? ____ yes X no

Date Last log was run _____

Was CO₂ encountered? ____ yes X no at what depths? _____

Was H₂S encountered? ____ yes X no at what depths? _____

Were unusual drilling circumstances encountered? ____ yes X no

If yes, briefly explain below _____

Other remarks: _____

640 Acres

If more than three drainholes are proposed, attach a separate sheet indicating the necessary information.

Direction must be stated in degrees azimuth. Please note, the horizontal drainhole and its end point must be located within the boundaries of the lease or spacing unit.

Directional surveys are required for all drainholes and directional wells.

640 Acres

BOTTOM HOLE LOCATION FOR DIRECTIONAL HOLE

SEC	TWP	RGE	COUNTY
Spot Location	1/4	1/4	1/4
Measured Total Depth	True Vertical Depth	BHL From Lease, Unit, or Property Line:	

BOTTOM HOLE LOCATION FOR HORIZONTAL HOLE: (LATERALS)

LATERAL #1

SEC	TWP	RGE	COUNTY
09	03N	03W	
Spot Location	SW 1/4	SW 1/4	Se 1/4
Depth of Deviation	9038'	Radius of Turn	700
Measured Total Depth	14,986'	True Vertical Depth	9464'
		Direction	179.90
		Total Length	4962'
		BHL From Lease, Unit, or Property Line:	53 165

LATERAL #2

SEC	TWP	RGE	COUNTY
Spot Location	1/4	1/4	1/4
Depth of Deviation	Radius of Turn	Direction	Total Length
Measured Total Depth	True Vertical Depth	BHL From Lease, Unit, or Property Line:	

LATERAL #3

SEC	TWP	RGE	COUNTY
Spot Location	1/4	1/4	1/4
Depth of Deviation	Radius of Turn	Direction	Total Length
Measured Total Depth	True Vertical Depth	BHL From Lease, Unit, or Property Line:	

Effective date 9/1/19 8-1-19 (Paper Copy)

Oklahoma Corporation Commission
Oil & Gas Conservation Division
Post Office Box 52000
Oklahoma City, Oklahoma 73152-2000
Rule 165: 10-3-25

Form 1002

1002A
Addendum

API No.: 35049252020000

Completion Report

Spud Date: September 16, 2018

OTC Prod. Unit No.: 049-224812-0-0000 ✓

Drilling Finished Date: October 07, 2018

1st Prod Date: December 01, 2018

Completion Date: November 27, 2018

Drill Type: HORIZONTAL HOLE

Well Name: CUDD 1-9H

Purchaser/Measurer: WOODFORD EPRESS

Location: GARVIN 9 3N 3W
NW NW NE NE
300 FNL 1260 FEL of 1/4 SEC
Latitude: 34.752834326 Longitude: -97.514250555
Derrick Elevation: 1036 Ground Elevation: 1011

First Sales Date: 12/01/2018

A (SHL (sec 9)) - 224812 I

Operator: RED ROCKS OIL & GAS OPERATING LLC 22649

1321 N ROBINSON AVE STE A
OKLAHOMA CITY, OK 73103-4919

Completion Type	
X	Single Zone
	Multiple Zone
	Commingled

Location Exception
Order No
N/A

Increased Density
Order No
N/A

Casing and Cement							
Type	Size	Weight	Grade	Feet	PSI	SAX	Top of CMT
CONDUCTOR	20			105			SURFACE
SURFACE	9 5/8	40	J-55	1577		1015	SURFACE
PRODUCTION	5 1/2	20	P-110	14962		1670	7000

Liner								
Type	Size	Weight	Grade	Length	PSI	SAX	Top Depth	Bottom Depth
There are no Liner records to display.								

Total Depth: 14986

Packer	
Depth	Brand & Type
There are no Packer records to display.	

Plug	
Depth	Plug Type
There are no Plug records to display.	

Initial Test Data

12-1-2018

319 WDFD

980 PSI

September 05, 2019

1 of 2

EZ

DR

Test Date	Formation	Oil BBL/Day	Oil-Gravity (API)	Gas MCF/Day	Gas-Oil Ratio Cu FT/BBL	Water BBL/Day	Pumpin or Flowing	Initial Shut-In Pressure	Choke Size	Flow Tubing Pressure
Dec 01, 2018	WOODFORD	21	58	3450	164286	353	FLOWING	980	42/128	660

Completion and Test Data by Producing Formation

Formation Name: WOODFORD

Code: 319WDFD

Class: GAS

Spacing Orders

Order No	Unit Size
672400	640 <i>A</i>

Perforated Intervals

From	To
9936	14838

Acid Volumes

15,000 GALLONS 15% ACID

Fracture Treatments

85,996 POUNDS 40/70 WHITE SAND, 251,614 BARRELS SLICK WATER

Formation	Top
TONKAWA	6090
CHECKERBOARD	7035
GIBSON	7545
HART	7710
SPRINGER	7855
BLACK SHALE	8340
CANEY	8815
SYCAMORE	8950
WOODFORD	9215
WOODFORD LP	9300

Were open hole logs run? No

Date last log run:

Were unusual drilling circumstances encountered? No

Explanation:

Other Remarks

OCC - THIS WELL'S COMPLETION INTERVAL IS WITHIN THE PARAMETERS ALLOWED BY THE SPACING ORDER.

Lateral Holes

Sec: 9 TWP: 3N RGE: 3W County: GARVIN

SW SW SW SE

53 FSL 2591 FEL of 1/4 SEC

Depth of Deviation: 9038 Radius of Turn: 700 Direction: 179 Total Length: 4962

Measured Total Depth: 14986 True Vertical Depth: 9464 End Pt. Location From Release, Unit or Property Line: 53

FOR COMMISSION USE ONLY

1143451

Status: Accepted