

Oklahoma Corporation Commission
Oil & Gas Conservation Division
Post Office Box 52000
Oklahoma City, Oklahoma 73152-2000
Rule 165: 10-3-25

Form 1002A

API No.: 35153236440000

Completion Report

Spud Date: April 12, 2019

OTC Prod. Unit No.: 153-226228-0-0000

Drilling Finished Date: May 04, 2019

1st Prod Date: July 22, 2019

Completion Date: June 11, 2019

Drill Type: STRAIGHT HOLE

Min Gas Allowable: Yes

Well Name: SHAW 1-24

Purchaser/Measurer: DCP MIDSTREAM

Location: WOODWARD 24 21N 20W
SE NW SW SW
855 FSL 486 FWL of 1/4 SEC
Latitude: 36.2782417 Longitude: -99.2980194
Derrick Elevation: 2056 Ground Elevation: 2038

First Sales Date: 07/22/2019

Operator: WOODWARD IODINE CORPORATION 12837
PO BOX 1245
205865 ECR 32
WOODWARD, OK 73802-1245

Completion Type		Location Exception		Increased Density	
X	Single Zone	Order No		Order No	
	Multiple Zone	There are no Location Exception records to display.		There are no Increased Density records to display.	
	Commingled				

Casing and Cement							
Type	Size	Weight	Grade	Feet	PSI	SAX	Top of CMT
CONDUCTOR	20			80			SURFACE
SURFACE	13.375	54.5	J-55	433	500	1250	SURFACE
INTERMEDIATE	9.625	36	J-55	1216	500	845	469
PRODUCTION	7.0	26	P-110	9148	4500	735	4180

Liner								
Type	Size	Weight	Grade	Length	PSI	SAX	Top Depth	Bottom Depth
There are no Liner records to display.								

Total Depth: 9148

Packer	
Depth	Brand & Type
There are no Packer records to display.	

Plug	
Depth	Plug Type
There are no Plug records to display.	

Initial Test Data

Test Date	Formation	Oil BBL/Day	Oil-Gravity (API)	Gas MCF/Day	Gas-Oil Ratio Cu FT/BBL	Water BBL/Day	Pumpin or Flowing	Initial Shut- In Pressure	Choke Size	Flow Tubing Pressure
Aug 01, 2019	MORROW			100		1400	PUMPING	350	NONE	200

Completion and Test Data by Producing Formation

Formation Name: MORROW		Code: 402MRRW		Class: GAS	
Spacing Orders		Perforated Intervals			
Order No	Unit Size	From	To		
89370	640	9010	9074		
Acid Volumes		Fracture Treatments			
There are no Acid Volume records to display.		2,988 BARRELS SW, 215,000 LBS 20/40 PROPPANT, 35,000 LBS 20/40 PROPPANT.			

Formation	Top
DOUGLAS	6230
TONKAWA	6700
COTTAGE GROVE	7150
OSWEGO	7660
MORROW SHALE	8509
MORROW SAND	8885
CHESTER	9086

Were open hole logs run? Yes
Date last log run: April 29, 2019

Were unusual drilling circumstances encountered? No
Explanation:

Other Remarks
WELL WAS DRILLED FOR MORROW WATER FOR EXTRACTION OF IODINE. WELL IS PRODUCING WITH ESP AS ARTIFICIAL LIFT METHOD.

FOR COMMISSION USE ONLY
<div>Status: Accepted</div> <div>1143930</div>

RECEIVED

Form 1002A
Rev. 2009

API NO. **153 23644**
OTC PROD UNIT NO. **153-226228-0-0000**

(PLEASE TYPE OR USE INK ONLY)

OKLAHOMA CORPORATION COMMISSION
Oil & Gas Conservation Division
Post Office Box 52000
Oklahoma City, Oklahoma 73152-2000
Rule 165.10-3-25

OCT 07 2019

OKLAHOMA CORPORATION COMMISSION
640 Acres

☒ ORIGINAL
☐ AMENDED (Reason) _____

TYPE OF DRILLING OPERATION

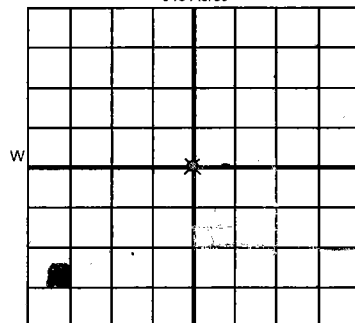
☒ STRAIGHT HOLE ☐ DIRECTIONAL HOLE ☐ HORIZONTAL HOLE
☐ SERVICE WELL

If directional or horizontal, see reverse for bottom hole location.

COUNTY **Woodward** SEC **24** TWP **21-N** RGE **20-W1M**
LEASE NAME **Shaw** WELL NO. **1-24**
SE 1/4 NW 1/4 SW 1/4 SW 1/4 FSL OF 1/4 SEC **855** FWL OF 1/4 SEC **486**
ELEVATION Derrick FL **2056** Ground **2038** Latitude (if known) **36°16'41.67"** Longitude (if known) **-99°17'52.87"**
OPERATOR NAME **Woodward Iodine Corporation** OTC / OCC OPERATOR NO. **12837 0**
ADDRESS **P.O. Box 1245**
CITY **Woodward,** STATE **OK** ZIP **73802-1245**

COMPLETION REPORT

SPUD DATE **4.12.19**
DRLG FINISHED DATE **5.4.19**
DATE OF WELL COMPLETION **6.11.19**
1st PROD DATE **7/22/19**
RECOMP DATE



LOCATE WELL

COMPLETION TYPE

☒ SINGLE ZONE
☐ MULTIPLE ZONE
Application Date
☐ COMMINGLED
Application Date
LOCATION EXCEPTION ORDER NO.
INCREASED DENSITY ORDER NO.

CASING & CEMENT (Attach Form 1002C)

TYPE	SIZE	WEIGHT	GRADE	FEET	PSI	SAX	TOP OF CMT
CONDUCTOR	20"			80'			surface
SURFACE	13.375	54.5	J-55	433	500	1250	surface
INTERMEDIATE	9.625	36	S-55	1216	500	845	400' 469' per 1002C
PRODUCTION	7.0	26	P110	9148	4500	735	4180
LINER							

PACKER @ _____ BRAND & TYPE _____ PLUG @ _____ TYPE _____ PLUG @ _____ TYPE _____
PACKER @ _____ BRAND & TYPE _____ PLUG @ _____ TYPE _____ PLUG @ _____ TYPE _____

TOTAL DEPTH

9148'

COMPLETION & TEST DATA BY PRODUCING FORMATION

402 MRRW

FORMATION	Morrow						Monitor Report to Frac Focus
SPACING & SPACING ORDER NUMBER	89370-640A						
CLASS: Oil, Gas, Dry, Inj, Disp, Comm Disp, Svc	WATER Gas						
	9010-9014						
PERFORATED INTERVALS	9022-9074						
ACID/VOLUME							
FRACTURE TREATMENT (Fluids/Prop Amounts)	2088 BBL SW 215 KBS 20/40 RC 35 KBS 20/40 RC						

Min Gas Allowable (165:10-17-7)

Gas Purchaser/Measurer
First Sales Date

DCP MIDSTREAM
7/22/19

INITIAL TEST DATA

INITIAL TEST DATE	8/1/2019					
OIL-BBL/DAY	0					
OIL-GRAVITY (API)	—					
GAS-MCF/DAY	100					
GAS-OIL RATIO CU FT/BBL	—					
WATER-BBL/DAY	1400					
PUMPING OR FLOWING	PUMP					
INITIAL SHUT-IN PRESSURE	350 PSI					
CHOKE SIZE	NONE					
FLOW TUBING PRESSURE	200 PSI					

AS SUBMITTED

A record of the formations drilled through, and pertinent remarks are presented on the reverse. I declare that I have knowledge of the contents of this report and am authorized by my organization to make this report, which was prepared by me or under my supervision and direction, with the data and facts stated herein to be true, correct, and complete to the best of my knowledge and belief.

Neal Earle SIGNATURE **Neal Earle (Agent)** NAME (PRINT OR TYPE) **9/30/19** DATE **800-823-9811** PHONE NUMBER
711 Birch ADDRESS **Canadian** CITY **Tx 79014** STATE **ZIP** **Earle@hadeng.com** EMAIL ADDRESS

PLEASE TYPE OR USE BLACK INK ONLY
FORMATION RECORD

Give formation names and tops, if available, or descriptions and thickness of formations drilled through. Show intervals cored or drillstem tested.

NAMES OF FORMATIONS	TOP
DOUGLAS	6230
TANK	6700
COTTAGE GROVE	7150
OSWEGO	7660
MORROW SH	8509
MORROW SD	8885
CHESTER	9086

LEASE NAME

Shaw

WELL NO.

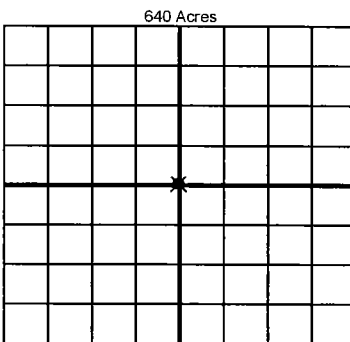
1-24

FOR COMMISSION USE ONLY		
ITD on file	<input type="checkbox"/> YES	<input type="checkbox"/> NO
APPROVED	DISAPPROVED	2) Reject Codes
<div></div> <div></div> <div></div> <div></div> <div></div>		

Were open hole logs run?	<input checked="" type="checkbox"/> yes	<input type="checkbox"/> no
Date Last log was run	April 29, 2019	
Was CO ₂ encountered?	<input type="checkbox"/> yes	<input checked="" type="checkbox"/> no at what depths?
Was H ₂ S encountered?	<input type="checkbox"/> yes	<input checked="" type="checkbox"/> no at what depths?
Were unusual drilling circumstances encountered?	<input type="checkbox"/> yes <input checked="" type="checkbox"/> no	
If yes, briefly explain below		

Other remarks:

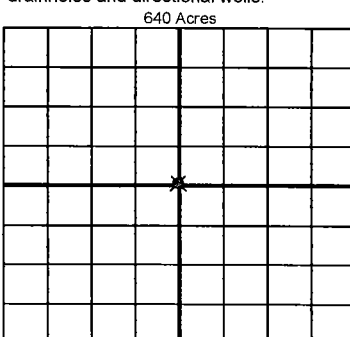
Well was drilled for Morrow water for extraction of Iodine
Well is producing w/ ESP as artificial lift method.



If more than three drainholes are proposed, attach a separate sheet indicating the necessary information.

Direction must be stated in degrees azimuth.
Please note, the horizontal drainhole and its end point must be located within the boundaries of the lease or spacing unit.

Directional surveys are required for all drainholes and directional wells.



BOTTOM HOLE LOCATION FOR DIRECTIONAL HOLE

SEC	TWP	RGE	COUNTY
Spot Location			
1/4	1/4	1/4	1/4
Measured Total Depth		True Vertical Depth	BHL From Lease, Unit, or Property Line:

BOTTOM HOLE LOCATION FOR HORIZONTAL HOLE: (LATERALS)

LATERAL #1			
SEC	TWP	RGE	COUNTY
Spot Location			
1/4	1/4	1/4	1/4
Depth of Deviation		Radius of Turn	Direction
			Total Length
Measured Total Depth		True Vertical Depth	BHL From Lease, Unit, or Property Line:

LATERAL #2			
SEC	TWP	RGE	COUNTY
Spot Location			
1/4	1/4	1/4	1/4
Depth of Deviation		Radius of Turn	Direction
			Total Length
Measured Total Depth		True Vertical Depth	BHL From Lease, Unit, or Property Line:

LATERAL #3			
SEC	TWP	RGE	COUNTY
Spot Location			
1/4	1/4	1/4	1/4
Depth of Deviation		Radius of Turn	Direction
			Total Length
Measured Total Depth		True Vertical Depth	BHL From Lease, Unit, or Property Line:

11/11/2019
Oklahoma Corporation Commission
Oil & Gas Conservation Division
Post Office Box 52000
Oklahoma City, Oklahoma 73152-2000
Rule 165: 10-3-25

Form 1002A

1002A
Addendum

API No.: 153236450000

OTC Prod. Unit No.: 153-226227-0-0000 ✓

Paper 1002A
Rec'd 10-11-2019
Completion Report

Spud Date: May 05, 2019

Drilling Finished Date: May 20, 2019

1st Prod Date:

Completion Date: June 13, 2019

A: 226227 I

Drill Type: STRAIGHT HOLE

Well Name: ROPER 1-26

Location: WOODWARD 26 23N 20W
NE NE SW SW
1074 FSL 1154 FWL of 1/4 SEC
Derrick Elevation: 1904 Ground Elevation: 1886

Purchaser/Measurer:

First Sales Date:

Operator: WOODWARD IODINE CORPORATION 12837
PO BOX 1245
205865 ECR 32
WOODWARD, OK 73802-1245

Completion Type	
X	Single Zone
	Multiple Zone
	Commingled

Location Exception
Order No
702787

Increased Density
Order No
There are no Increased Density records to display.

Casing and Cement							
Type	Size	Weight	Grade	Feet	PSI	SAX	Top of CMT
CONDUCTOR	20			92			0
SURFACE	13.375	54.5	J-55	454	500	700	SURFACE
INTERMEDIATE	9.625	36	J-55	1705	500	705	SURFACE
PRODUCTION	7	26	P-110	8160	4500	630	SURFACE

Liner								
Type	Size	Weight	Grade	Length	PSI	SAX	Top Depth	Bottom Depth
There are no Liner records to display.								

Total Depth: 8160

Packer	
Depth	Brand & Type
There are no Packer records to display.	

Plug	
Depth	Plug Type
There are no Plug records to display.	

Initial Test Data

October 24, 2019

9-30-19

402 MWSD

2100 psi

1 of 2

EZ

2R

Test Date	Formation	Oil BBL/Day	Oil-Gravity (API)	Gas MCF/Day	Gas-Oil Ratio Cu FT/BBL	Water BBL/Day	Pumpin or Flowing	Initial Shut-In Pressure	Choke Size	Flow Tubing Pressure
Sep 30, 2019	MORROW SAND			100		1400	PUMPING	2100	NONE	300

Completion and Test Data by Producing Formation

Formation Name: MORROW SAND

Code: 402MWSD

Class: GAS

Spacing Orders

Order No	Unit Size
38965	640 (V) ✓
63509	640 (V) ✓

Perforated Intervals

From	To
7840	8046

Acid Volumes

There are no Acid Volume records to display.

Fracture Treatments

185,540 POUNDS 20/40, 34,860 POUNDS 20/40 RC, 2,975 BARRELS XL GEL

Formation	Top
OSWEGO	6710
MORROW SHALE	7584
MORROW SAND	7840
CHESTER	8044

Were open hole logs run? Yes

Date last log run: May 16, 2019

Were unusual drilling circumstances encountered? No

Explanation:

Other Remarks

WELL DRILLED FOR MORROW WATER FOR EXTRACTION OF IODINE. WELL PRODUCING WITH ESP. OCC - OPERATOR SET CIBP + 10 SACKS CEMENT AT 7,980'. PERFORATED 7,920' TO 7,921'. SQUEEZED CEMENT WITH 150 SACKS, LIFTED CEMENT TO 6,295'. DRILLED OUT AFTER SQUEEZE.

FOR COMMISSION USE ONLY

Status: Accepted

1143849