

Oklahoma Corporation Commission
Oil & Gas Conservation Division
Post Office Box 52000
Oklahoma City, Oklahoma 73152-2000
Rule 165: 10-3-25

Form 1002A

API No.: 35083359550001

Completion Report

Spud Date: May 24, 1941

OTC Prod. Unit No.: 083-226141-0-0000

Drilling Finished Date: June 23, 1941

Amended

1st Prod Date: June 24, 1941

Amend Reason: RECOMPLETION AND CORRECT LOCATION

Completion Date: June 27, 1941

Recomplete Date: July 31, 2019

Drill Type: STRAIGHT HOLE

Well Name: DONOGHUE 3

Purchaser/Measurer:

Location: LOGAN 7 17N 1W
SE SW NW SE
1630 FSL 2185 FEL of 1/4 SEC
Latitude: 35.960859315 Longitude: -97.343475919
Derrick Elevation: 973 Ground Elevation: 963

First Sales Date:

Operator: MIDWESTERN EXPLORATION COMPANY 15445

3500 S BOULEVARD STE 2B
EDMOND, OK 73013-5487

Completion Type		Location Exception		Increased Density	
X	Single Zone	Order No		Order No	
	Multiple Zone	There are no Location Exception records to display.		There are no Increased Density records to display.	
	Commingled				

Casing and Cement							
Type	Size	Weight	Grade	Feet	PSI	SAX	Top of CMT
SURFACE	10.75	29		306		200	SURFACE
PRODUCTION	7	24		5444		350	4554

Liner								
Type	Size	Weight	Grade	Length	PSI	SAX	Top Depth	Bottom Depth
There are no Liner records to display.								

Total Depth: 5475

Packer		Plug	
Depth	Brand & Type	Depth	Plug Type
There are no Packer records to display.		5020	CIBP

Initial Test Data

Test Date	Formation	Oil BBL/Day	Oil-Gravity (API)	Gas MCF/Day	Gas-Oil Ratio Cu FT/BBL	Water BBL/Day	Pumpin or Flowing	Initial Shut-In Pressure	Choke Size	Flow Tubing Pressure
Jun 29, 2019	2ND WILCOX					182	PUMPING			
Jul 31, 2019	SKINNER LOW	6.96					PUMPING			

Completion and Test Data by Producing Formation										
Formation Name: 2ND WILCOX				Code: 202WLCX2				Class: DRY		
Spacing Orders				Perforated Intervals						
Order No		Unit Size		From			To			
281003		80		There are no Perf. Intervals records to display.						
Acid Volumes				Fracture Treatments						
NONE				NONE						
Formation Name: SKINNER LOW				Code: 404SKNRL				Class: OIL		
Spacing Orders				Perforated Intervals						
Order No		Unit Size		From			To			
261923		40		4988			4998			
Acid Volumes				Fracture Treatments						
1,500 GALLONS				NONE						

Formation	Top
TONKAWA	3518
PRUE	4878
SKINNER	4988
BARTLESVILLE	5068
1ST WILCOX	5372
2ND WILCOX	5460

Were open hole logs run? No
Date last log run: June 17, 1940

Were unusual drilling circumstances encountered? No
Explanation:

Other Remarks
OCC - THIS WELL WAS AN OPEN HOLE COMPLETION IN THE 2ND WILCOX FROM BOTTOM OF THE 7" CASING AT 5,444' TO TOTAL DEPTH AT 5,475'. THIS ZONE IS NOW PLUGGED OFF WITH A CIBP AT 5,020'. OCC - THIS 1002A IS ALSO CORRECTING THE SURFACE LOCATION BASED ON GPS NOT A SPOT CALL FROM 1941.

FOR COMMISSION USE ONLY
<div>1143928</div> <div>Status: Accepted</div>

RECEIVED

Form 1002A
Rev. 2009

OCT 04 2019

OKLAHOMA CORPORATION COMMISSION

API NO. 083-35955-X
OTC PROD. UNIT NO. 083-226141

(PLEASE TYPE OR USE BLACK INK ONLY)

OKLAHOMA CORPORATION COMMISSION
Oil & Gas Conservation Division
Post Office Box 52000
Oklahoma City, Oklahoma 73152-2000
Rule 165-10-3-25

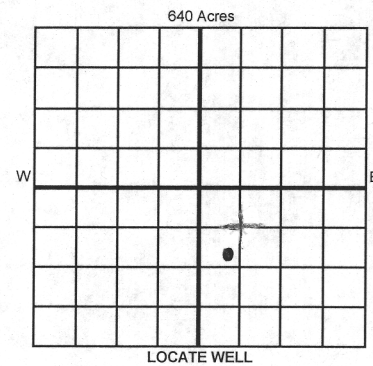
ORIGINAL
☒ AMENDED (Reason) Recompletion + Correct Location

COMPLETION REPORT

TYPE OF DRILLING OPERATION
☒ STRAIGHT HOLE ☐ DIRECTIONAL HOLE ☐ HORIZONTAL HOLE
☐ SERVICE WELL

If directional or horizontal, see reverse for bottom hole location.

COUNTY	Logan	SEC	7	TWP	17N	RGE	1W
LEASE NAME	Donoghue						
WELL NO.	#3						
SPUD DATE	5/24/1941						
DRLG FINISHED DATE	6/23/1941						
DATE OF WELL COMPLETION	6/27/1941						
1st PROD DATE	6/24/1941						
RECOMP DATE	7/31/2019						
ELEVATION Derrick FL	973	Ground	963	FSL OF 1/4 SEC	1980	WELL OF 1/4 SEC	2185
Latitude (if known)	35.960859315			Longitude (if known)	-97.343475819		
OPERATOR NAME	Midwestern Exploration Co.						
OTC / OCC OPERATOR NO.	15445						
ADDRESS	3500 S. Boulevard, Ste 2B						
CITY	Edmond	STATE	OK	ZIP	73013		



COMPLETION TYPE

<input checked="" type="checkbox"/> SINGLE ZONE	
<input type="checkbox"/> MULTIPLE ZONE	
<input type="checkbox"/> COMMINGLED	
<input type="checkbox"/> LOCATION EXCEPTION	
<input type="checkbox"/> ORDER NO.	
<input type="checkbox"/> INCREASED DENSITY	
<input type="checkbox"/> ORDER NO.	

CASING & CEMENT (Attach Form 1002C)

TYPE	SIZE	WEIGHT	GRADE	FEET	PSI	SAX	TOP OF CMT
CONDUCTOR	None						
SURFACE	10.75	29#	-	306		200	Surface
INTERMEDIATE	None						
PRODUCTION	7	24#	-	5444		350	4554
LINER	None						

PACKER @ N/A BRAND & TYPE 5020 TYPE CIBP PLUG @ 5020 TYPE CIBP PLUG @ 5020 TYPE CIBP
 Packer @ 5020 BRAND & TYPE 5020 TYPE CIBP PLUG @ 5020 TYPE CIBP PLUG @ 5020 TYPE CIBP
 TOTAL DEPTH 5,475

COMPLETION & TEST DATA BY PRODUCING FORMATION

FORMATION	2nd Wilcox	Skinner Lower	No Frac
SPACING & SPACING ORDER NUMBER	14265 281003 (80)	261923 (40)	
CLASS: Oil, Gas, Dry, Inj, Disp, Comm Disp, Svc	Dry	Oil	
PERFORATED INTERVALS	Open Hole 5444-5475	4988-4998	
ACID/VOLUME	None	1500 gal	
FRACTURE TREATMENT (Fluids/Prop Amounts)	None	None	
	None	None	
	None	None	

Min Gas Allowable (165-10-17-7) OR Oil Allowable (165-10-13-3) Gas Purchaser/Measurer First Sales Date

INITIAL TEST DATA

INITIAL TEST DATE	6/29/2019	7/31/2019
OIL-BBL/DAY	0	6.96
OIL-GRAVITY (API)	-	-
GAS-MCF/DAY	0	0
GAS-OIL RATIO CU FT/BBL	-	-
WATER-BBL/DAY	182	0
PUMPING OR FLOWING	Pumping	Pumping
INITIAL SHUT-IN PRESSURE	0	-
CHOKE SIZE	-	-
FLOW TUBING PRESSURE	-	-

AS SUBMITTED

A record of the formations drilled through, and pertinent remarks are presented on the reverse. I declare that I have knowledge of the contents of this report and am authorized by my organization to make this report, which was prepared by me or under my supervision and direction, with the data and facts stated herein to be true, correct, and complete to the best of my knowledge and belief.

SIGNATURE Dale J. Lollar NAME (PRINT OR TYPE) Dale J. Lollar, President DATE 10/3/2019 PHONE NUMBER (405) 340-4300
 ADDRESS 3500 S. Boulevard, Ste 2B CITY Edmond STATE OK ZIP 73013 EMAIL ADDRESS midwesternexpc@sbcglobal.net

Based on GPS

PLEASE TYPE OR USE BLACK INK ONLY
FORMATION RECORD

Give formation names and tops, if available, or descriptions and thickness of formations drilled through. Show intervals cored or drillstem tested.

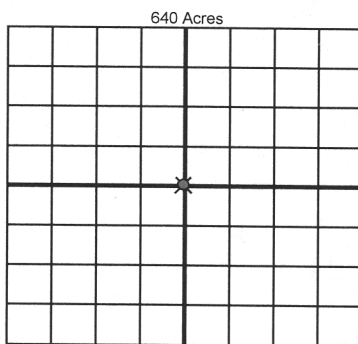
NAMES OF FORMATIONS	TOP
Tonkawa	3,518
Prue	4,878
Skinner	4,988
Bartlesville	5,068
1st Wilcox	5,372
2nd Wilcox	5,460

LEASE NAME _____ WELL NO. _____

FOR COMMISSION USE ONLY	
ITD on file <input type="checkbox"/> YES <input type="checkbox"/> NO	
APPROVED _____	DISAPPROVED _____
2) Reject Codes	

Were open hole logs run?	yes	<input checked="" type="checkbox"/> no
Date Last log was run	6/17/1941	
Was CO ₂ encountered?	yes	<input checked="" type="checkbox"/> no at what depths? _____
Was H ₂ S encountered?	yes	<input checked="" type="checkbox"/> no at what depths? _____
Were unusual drilling circumstances encountered?	yes	<input checked="" type="checkbox"/> no
If yes, briefly explain below		

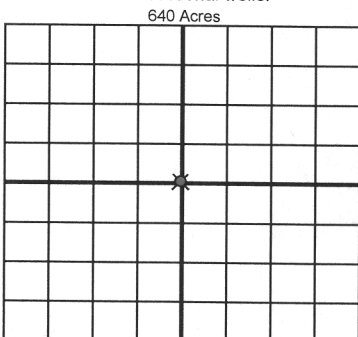
Other remarks: *OCC - This well was an open hole completion in the 2nd Wilcox from bottom of the 7" casing at 5444' to total depth at 5475'. This zone is now plugged off with a CIBP at 5020'. OCC - This 1002A is also correcting the surface location based on GPS not the spot call from 1941.*



If more than three drainholes are proposed, attach a separate sheet indicating the necessary information.

Direction must be stated in degrees azimuth. Please note, the horizontal drainhole and its end point must be located within the boundaries of the lease or spacing unit.

Directional surveys are required for all drainholes and directional wells.



BOTTOM HOLE LOCATION FOR DIRECTIONAL HOLE

SEC	TWP	RGE	COUNTY
Spot Location			
1/4	1/4	1/4	1/4
Measured Total Depth		True Vertical Depth	Feet From 1/4 Sec Lines FSL FWL
BHL From Lease, Unit, or Property Line:			

BOTTOM HOLE LOCATION FOR HORIZONTAL HOLE: (LATERALS)

LATERAL #1			
SEC	TWP	RGE	COUNTY
Spot Location			
1/4	1/4	1/4	1/4
Depth of Deviation		Radius of Turn	Direction Total Length
Measured Total Depth		True Vertical Depth	BHL From Lease, Unit, or Property Line:

LATERAL #2			
SEC	TWP	RGE	COUNTY
Spot Location			
1/4	1/4	1/4	1/4
Depth of Deviation		Radius of Turn	Direction Total Length
Measured Total Depth		True Vertical Depth	BHL From Lease, Unit, or Property Line:

LATERAL #3			
SEC	TWP	RGE	COUNTY
Spot Location			
1/4	1/4	1/4	1/4
Depth of Deviation		Radius of Turn	Direction Total Length
Measured Total Depth		True Vertical Depth	BHL From Lease, Unit, or Property Line: