

Oklahoma Corporation Commission  
Oil & Gas Conservation Division  
Post Office Box 52000  
Oklahoma City, Oklahoma 73152-2000  
Rule 165: 10-3-25

Form 1002A

API No.: 35125238070001

**Completion Report**

Spud Date: September 09, 2013

OTC Prod. Unit No.:

Drilling Finished Date: September 15, 2013

**Amended**

1st Prod Date: October 01, 2013

Amend Reason: ADDED PERFORATIONS - BOIS D'ARC

Completion Date: October 02, 2013

Recomplete Date: August 01, 2018

**Drill Type: STRAIGHT HOLE**

Well Name: RETA 1-29

Purchaser/Measurer:

Location: POTTAWATOMIE 29 7N 4E  
NE SW NE SW  
1886 FSL 1670 FWL of 1/4 SEC  
Derrick Elevation: 1040 Ground Elevation: 1032

First Sales Date:

Operator: BASIS RESOURCES GROUP LLC 22981

6422-A N SANTA FE AVE  
OKLAHOMA CITY, OK 73116-9128

Completion Type		Location Exception		Increased Density	
X	Single Zone	Order No		Order No	
	Multiple Zone	There are no Location Exception records to display.		There are no Increased Density records to display.	
	Commingled				

Casing and Cement							
Type	Size	Weight	Grade	Feet	PSI	SAX	Top of CMT
SURFACE	8 5/8	24	L/S	447		320	SURFACE
PRODUCTION	5 1/2	17	R-3 L5	4324		175	1200

Liner								
Type	Size	Weight	Grade	Length	PSI	SAX	Top Depth	Bottom Depth
There are no Liner records to display.								

**Total Depth: 4370**

Packer		Plug	
Depth	Brand & Type	Depth	Plug Type
There are no Packer records to display.		4060	COMPOSITE

Initial Test Data										
Test Date	Formation	Oil BBL/Day	Oil-Gravity (API)	Gas MCF/Day	Gas-Oil Ratio Cu FT/BBL	Water BBL/Day	Pumpin or Flowing	Initial Shut-In Pressure	Choke Size	Flow Tubing Pressure
Dec 05, 2018	BOIS D ARC	30	36		100	10	PUMPING	610	50	50

**Completion and Test Data by Producing Formation**

Formation Name: BOIS D ARC

Code: 301BDRC

Class: OIL

**Spacing Orders**

Order No	Unit Size
55239	40

**Perforated Intervals**

From	To
3924	3866

**Acid Volumes**69 BARRELS RETARDED ACID / WATER 15% HCL ACID  
@ 2,000# PSI**Fracture Treatments**1,016 BARRELS 20/40 SAND, 7,500 POUNDS, TOTAL  
SLURRY VOLUME 1,085 BARRELS

Formation	Top
CALVIN SAND	3250
EARLSBORO SAND	3656
WOODFORD SHALE	3800
BOIS D'ARC - HUNTON LIME	3866
CHIMNEY HILL - HUNTON LIME	4106
VIOLA LIME	4280
SIMPSON DOLOMITE	4330

Were open hole logs run? Yes

Date last log run: September 16, 2013

Were unusual drilling circumstances encountered? No

Explanation:

**Other Remarks**

INITIAL SETTING OF COMPOSITE PLUG - PERFORATIONS @ 1-18. WELL PRODUCES NATURAL APPROXIMATELY 10 BARRELS OIL PER DAY AFTER INITIAL TEST OF 22 BARRELS OIL - PSI 50#. ACID / SAND FRAC POSTPONED UNTIL DECEMBER 4, 2018. DH PUMP / TUBULARS SET 70' ABOVE TOP PERFORATION. PENDING - LOWERING OF APPROXIMATELY 100' TUBING / RODS / DH PUMP.

**FOR COMMISSION USE ONLY**

1142153

Status: Accepted

API  
NO. 12523807

OTC PROD.  
UNIT NO. 22981

(PLEASE TYPE OR USE BLACK INK ONLY)

## OKLAHOMA CORPORATION COMMISSION

Oil &amp; Gas Conservation Division

Post Office Box 52000

Oklahoma City, Oklahoma 73152-2000

Rule 165:10-3-25

## COMPLETION REPORT

☒ ORIGINAL  
☐ AMENDED (Reason)

Added Perfors. - Bois D'Arc

## TYPE OF DRILLING OPERATION

☒ STRAIGHT HOLE    ☐ DIRECTIONAL HOLE    ☐ HORIZONTAL HOLE  
☐ SERVICE WELL

If directional or horizontal, see reverse for bottom hole location.

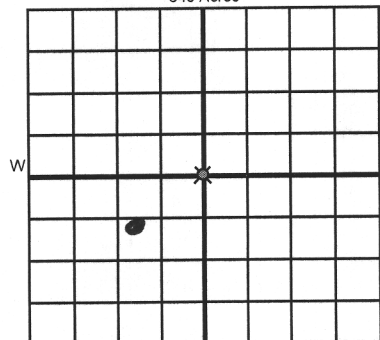
COUNTY	Bottawatomie		SEC	29	TWP	4E	DATE OF WELL COMPLETION		10-2-13		
LEASE NAME	RETA				WELL NO.	1-29	1st PROD DATE		Oct. 13		
NE 1/4 SW 1/4 NE 1/4 SW 1/4			FSL OF 1/4 SEC	1846'		FWL OF 1/4 SEC	1620'		RECOMP DATE		Aug. 13
ELEVATION		1040'		Ground		1032'		Latitude (if known)		Longitude (if known)	
OPERATOR NAME							Basi's Resources Group, LLC				
NAME							OTC / OCC OPERATOR NO. 22981				
ADDRESS											6422-A N. Santa Fe Ave
CITY						Oklahoma City			STATE		OK
										ZIP	73116

RECEIVED

FEB 25 2019

**Oklahoma Corporation  
Commission**

640 Acres



LOCATE WELL

COMPLETION TYPE

COMBINATION TYPE	7
<input checked="" type="checkbox"/> SINGLE ZONE	
<input type="checkbox"/> MULTIPLE ZONE	
Application Date	
<input type="checkbox"/> COMMINGLED	
Application Date	
LOCATION EXCEPTION	
ORDER NO.	
INCREASED DENSITY	
ORDER NO.	

**CASING & CEMENT (Attach Form 1002C)**

TYPE	SIZE	WEIGHT	GRADE	FEET	PSI	SAX	TOP OF CMT
CONDUCTOR							
SURFACE	8 7/8"	241 lb.	L15	447'		320	Surface
INTERMEDIATE							
PRODUCTION	5 1/2"	17 lb.	L2-3	4324'		175	1200'
LINER							
PLUG @ 1100'	TYPE 3	PLUG @ 1100'	TYPE 3			TOTAL DEPTH	4370'

PACKER @ \_\_\_\_\_ BRAND & TYPE \_\_\_\_\_ PLUG @ 4P60 TYPE Comp. Mag PLUG @ \_\_\_\_\_ TYPE \_\_\_\_\_  
 PACKER @ \_\_\_\_\_ BRAND & TYPE \_\_\_\_\_ PLUG @ \_\_\_\_\_ TYPE \_\_\_\_\_ PLUG @ \_\_\_\_\_ TYPE \_\_\_\_\_

**COMPLETION & TEST DATA BY PRODUCING FORMATION**

FORMATION	Bois D'Arc				Monitor
SPACING & SPACING					
ORDER NUMBER	<del>81444</del> 55239(40)				Report to
CLASS: Oil, Gas Dry, Inj, Disp, Comm Disp, Svc	Oil				
PERFORATED INTERVALS	3924' - 3866'				
ACID/VOLUME	1014 Bbls. / 20140 Sand - 7,500 lbs.				
FRAC TREATMENT (Fluids/Prop Amounts)	69 Bbls Retarded Acid/Water 15% HCl Acid @ 2000 # PSI Total Slurry Vol. 1085 Bbls.				

Min Gas Allowable (165:10-17-7)

Gas Purchaser/Measurer

First Sales Date

## INITIAL TEST DATA

**Oil Allowable (165:10-13-3)**

INITIAL TEST DATE	12-5-18					
OIL-BBL/DAY	30 Bbls.					
OIL-GRAVITY ( API)	36					
GAS-MCF/DAY	N/A					
GAS-OIL RATIO CU FT/BBL	100 % Oil					
WATER-BBL/DAY	10 Bbls					
PUMPING OR FLOWING	Pumping					
INITIAL SHUT-IN PRESSURE	610 #					
CHOKE SIZE	50%					
FLOW TUBING PRESSURE	50-100 #					

# AS SUBMITTED

# AS SUBMITTED

A record of the formations drilled through, and pertinent remarks are presented on the reverse. I declare that I have knowledge of the contents of this report and am authorized by my organization to make this report, which was prepared by me or under my supervision and direction, with the data and facts stated herein to be true, correct, and complete to the best of my knowledge and belief.

SIGNATURE

NAME (PRINT OR TYPE)

DATE \_\_\_\_\_

PHONE NUMBER

ADDRESS

CITY

STATE

ZIP

EMAIL ADDRESS

PLEASE TYPE OR USE BLACK INK ONLY  
FORMATION RECORD

Give formation names and tops, if available, or descriptions and thickness of formations drilled through. Show intervals cored or drillstem tested.

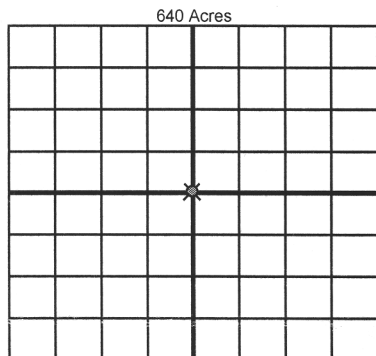
NAMES OF FORMATIONS	TOP
Palvin Sd.	3250'
Earlsboro Sd.	3656'
Wardford Sh.	3800'
Bois D'Arc' - Hutton Lm.	3866'
Chimney Hill - Hutton Lm.	4106'
Viola Lm.	4280'
Simpson Dolo.	4330'
Logans T.D.	4370'

LEASE NAME RETA WELL NO. 1-29

FOR COMMISSION USE ONLY		
ITD on file <input type="checkbox"/> YES <input type="checkbox"/> NO		
APPROVED _____	DISAPPROVED _____	2) Reject Codes _____

Were open hole logs run?	<input checked="" type="checkbox"/> yes <input type="checkbox"/> no	
Date Last log was run	<u>9-16-13</u>	
Was CO <sub>2</sub> encountered?	<input type="checkbox"/> yes <input checked="" type="checkbox"/> no	at what depths? _____
Was H <sub>2</sub> S encountered?	<input type="checkbox"/> yes <input checked="" type="checkbox"/> no	at what depths? _____
Were unusual drilling circumstances encountered?	<input type="checkbox"/> yes <input checked="" type="checkbox"/> no	
If yes, briefly explain below _____		

Other remarks: Initial Setting of Composite Plug & Perforations @ 1-18.  
Well produced natural approx 100 bbls oil per day after initial test  
of 22 bbls oil - PSI 504; Acid / Sand Frac postponed until  
December 4, 2013. DH Pump / Tubulars set 70' above top perf.  
Pending - Lowering of approx 100' Tbg / Rels / DH Pump.



BOTTOM HOLE LOCATION FOR DIRECTIONAL HOLE

SEC	TWP	RGE	COUNTY
Spot Location			
1/4	1/4	1/4	1/4
Measured Total Depth		True Vertical Depth	BHL From Lease, Unit, or Property Line:

BOTTOM HOLE LOCATION FOR HORIZONTAL HOLE: (LATERALS)

LATERAL #1			
SEC	TWP	RGE	COUNTY
Spot Location			
1/4	1/4	1/4	1/4
Depth of Deviation		Radius of Turn	Direction
			Total Length
Measured Total Depth		True Vertical Depth	BHL From Lease, Unit, or Property Line:

LATERAL #2			
SEC	TWP	RGE	COUNTY
Spot Location			
1/4	1/4	1/4	1/4
Depth of Deviation		Radius of Turn	Direction
			Total Length
Measured Total Depth		True Vertical Depth	BHL From Lease, Unit, or Property Line:

LATERAL #3			
SEC	TWP	RGE	COUNTY
Spot Location			
1/4	1/4	1/4	1/4
Depth of Deviation		Radius of Turn	Direction
			Total Length
Measured Total Depth		True Vertical Depth	BHL From Lease, Unit, or Property Line:

If more than three drainholes are proposed, attach a separate sheet indicating the necessary information.

Direction must be stated in degrees azimuth.  
Please note, the horizontal drainhole and its end point must be located within the boundaries of the lease or spacing unit.

Directional surveys are required for all drainholes and directional wells.

