

Oklahoma Corporation Commission
Oil & Gas Conservation Division
Post Office Box 52000
Oklahoma City, Oklahoma 73152-2000
Rule 165: 10-3-25

Form 1002A

API No.: 35017251870002

Completion Report

Spud Date: March 17, 2018

OTC Prod. Unit No.: 017-223946-0-0000

Drilling Finished Date: May 05, 2018

1st Prod Date: July 26, 2018

Completion Date: July 19, 2018

Amended

Amend Reason: CORRECTION TO SHOW MISSISSIPPIAN PERFORATED WITH WOODFORD

Drill Type: HORIZONTAL HOLE

Min Gas Allowable: Yes

Well Name: OKARCHE 1407 3H-12X

Purchaser/Measurer: MARKWEST GAS
PURCHASING

First Sales Date: 07/26/2018

Location: CANADIAN 12 14N 7W
NE NW NW NE
240 FNL 2080 FEL of 1/4 SEC
Latitude: 35.710601 Longitude: -97.894465
Derrick Elevation: 1193 Ground Elevation: 1168

Operator: NEWFIELD EXPLORATION MID-CON INC 20944

4 WATERWAY SQUARE PL STE 100
THE WOODLANDS, TX 77380-2764

Completion Type		Location Exception		Increased Density	
X	Single Zone	Order No		Order No	
	Multiple Zone	691664		672938	
	Commingled			672939	

Casing and Cement							
Type	Size	Weight	Grade	Feet	PSI	SAX	Top of CMT
SURFACE	9 5/8	36	J-55	1487		400	SURFACE
PRODUCTION	5 1/2	20	P-110	18856		2440	SURFACE

Liner								
Type	Size	Weight	Grade	Length	PSI	SAX	Top Depth	Bottom Depth
There are no Liner records to display.								

Total Depth: 18865

Packer	
Depth	Brand & Type
There are no Packer records to display.	

Plug	
Depth	Plug Type
There are no Plug records to display.	

Initial Test Data

Test Date	Formation	Oil BBL/Day	Oil-Gravity (API)	Gas MCF/Day	Gas-Oil Ratio Cu FT/BBL	Water BBL/Day	Pumpin or Flowing	Initial Shut-In Pressure	Choke Size	Flow Tubing Pressure
Sep 17, 2018	MISSISSIPPIAN- WOODFORD	853	40	1228	1440	432	FLOWING	1000	128	72

Completion and Test Data by Producing Formation

Formation Name: MISSISSIPPIAN

Code: 359MSSP

Class: OIL

Spacing Orders

Order No	Unit Size
610951	640
691663	MULTIUNIT
679190	AMEND 640

Perforated Intervals

From	To
8680	9424

Acid Volumes

415 BARRELS 15% HCL TOTAL

Fracture Treatments

376,108 BARRELS TOTAL FLUIDS, 13,216,781 POUNDS TOTAL PROPPANT

Formation Name: WOODFORD

Code: 319WDFD

Class: OIL

Spacing Orders

Order No	Unit Size
610951	640
691663	MULTIUNIT
679190	AMEND 640

Perforated Intervals

From	To
9424	18758

Acid Volumes

415 BARRELS 15% HCL TOTAL

Fracture Treatments

376,108 BARRELS TOTAL FLUIDS, 13,216,781 POUNDS TOTAL PROPPANT

Formation Name: MISSISSIPPIAN-WOODFORD

Code:

Class: OIL

Formation	Top
MISSISSIPPIAN	8083
WOODFORD	9424

Were open hole logs run? No

Date last log run:

Were unusual drilling circumstances encountered? No

Explanation:

Other Remarks

THE OKLAHOMA CORPORATION COMMISSION ASKED NEWFIELD TO RE-SUBMIT THE 1002A TO INCLUDE BOTH MISSISSIPPIAN AND WOODFORD FORMATIONS FOR COMPLETION FEBRUARY 14, 2018.

Lateral Holes
Sec: 13 TWP: 14N RGE: 7W County: CANADIAN
SW SE SW SE
95 FSL 1941 FEL of 1/4 SEC
Depth of Deviation: 8135 Radius of Turn: 750 Direction: 178 Total Length: 10078
Measured Total Depth: 18865 True Vertical Depth: 8661 End Pt. Location From Release, Unit or Property Line: 95

FOR COMMISSION USE ONLY
Status: Accepted
1142125

API NO. 017-25187
OTC PROD. UNIT NO. 017-223946-0-0000

(PLEASE TYPE OR USE BLACK INK ONLY)

OKLAHOMA CORPORATION COMMISSION
Oil & Gas Conservation Division
Post Office Box 52000
Oklahoma City, Oklahoma 73152-2000
Rule 165:10-3-25

RECEIVED
FEB 19 2019
Oklahoma Corporation
Commission

Form 1002A
Rev. 2009

☐ ORIGINAL
☒ AMENDED (Reason)

Correction to show Mississippian perforated with Woodford
Asked to Amend submittal for dual formations

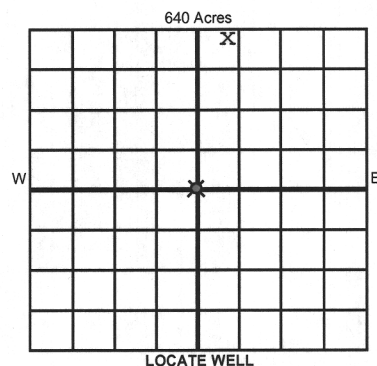
COMPLETION REPORT

TYPE OF DRILLING OPERATION

☐ STRAIGHT HOLE ☐ DIRECTIONAL HOLE ☒ HORIZONTAL HOLE
☐ SERVICE WELL

If directional or horizontal, see reverse for bottom hole location.

COUNTY	Canadian	SEC	12	TWP	14N	RGE	07W
LEASE NAME	Okarche	WELL NO.	14073-H-12X	1st PROD DATE	7/26/2018		
NE 1/4 NW 1/4 NW 1/4 NE 1/4	E8L OF 1/4 SEC 240 FNL		FWL OF 1/4 SEC 2080 FEL		RECOMP DATE		
ELEVATION Derrick FL	1193	Ground	1168	Latitude (if known)	35.710601	Longitude (if known)	97.894465
OPERATOR NAME	Newfield Exploration, Mid Continent			OTC / OCC OPERATOR NO.	20944		
ADDRESS	24 Waterway Avenue, Suite 900						
CITY	The Woodlands		STATE	TX	ZIP	77380	



COMPLETION TYPE

<input checked="" type="checkbox"/> SINGLE ZONE	
<input type="checkbox"/> MULTIPLE ZONE	
Application Date	
<input type="checkbox"/> COMMINGLED	
Application Date	
LOCATION EXCEPTION ORDER NO.	673540
INCREASED DENSITY ORDER NO.	672938
	672939

CASING & CEMENT (Attach Form 1002C)

TYPE	SIZE	WEIGHT	GRADE	FEET	PSI	SAX	TOP OF CMT
CONDUCTOR							
SURFACE	9 5/8"	36#	J-55	1487		400	Surf
INTERMEDIATE							
PRODUCTION	5 1/2"	20#	P-110	18856 GL		2440	Surf
LINER							
						TOTAL DEPTH	18865

PACKER @ _____ BRAND & TYPE _____ PLUG @ _____ TYPE _____ PLUG @ _____ TYPE _____
PACKER @ _____ BRAND & TYPE _____ PLUG @ _____ TYPE _____ PLUG @ _____ TYPE _____

COMPLETION & TEST DATA BY PRODUCING FORMATION

FORMATION	Mississippian	Woodford					
SPACING & SPACING ORDER NUMBER	673539 (Multinut)	6710451 (640)					Reported to Free Focus
CLASS: Oil, Gas, Dry, Inj, Disp, Comm Disp, Svc	Oil	Oil					
	8680-9424	9424-18758					
PERFORATED INTERVALS							
ACID/VOLUME	15% HCl - 415 Bbls	Total					
FRACTURE TREATMENT (Fluids/Prop Amounts)	Total Fluids - 376,108 Bbls						
	Total Proppant - 13,216,781 Lbs						

Min Gas Allowable (165:10-17-7) ☒ OR Oil Allowable (165:10-13-3) Gas Purchaser/Measurer MarkWest Gas Purchasing
First Sales Date 7/26/2018

INITIAL TEST DATA

INITIAL TEST DATE	9/17/2018					
OIL-BBL/DAY	853 Combined					
OIL-GRAVITY (API)	40 API					
GAS-MCF/DAY	1228 Combined					
GAS-OIL RATIO CU FT/BBL	1440					
WATER-BBL/DAY	432					
PUMPING OR FLOWING	Flowing					
INITIAL SHUT-IN PRESSURE	1000					
CHOKE SIZE	128					
FLOW TUBING PRESSURE	72					

AS SUBMITTED

A record of the formations drilled through, and pertinent remarks are presented on the reverse. I declare that I have knowledge of the contents of this report and am authorized by my organization to make this report, which was prepared by me or under my supervision and direction, with the data and facts stated herein to be true, correct, and complete to the best of my knowledge and belief.

Evelyn P. Smith
SIGNATURE

Evelyn P. Smith - Sr Regulatory Specialists
NAME (PRINT OR TYPE)

2/18/2019 281-674-2521
DATE PHONE NUMBER

Newfield Exploration, Mid Continent, 24 Waterway Ave, Suite 900, The Woodlands, TX 77380

epsmith@newfield.com

ADDRESS

CITY

STATE

ZIP

EMAIL ADDRESS

PLEASE TYPE OR USE BLACK INK ONLY
FORMATION RECORD

Give formation names and tops, if available, or descriptions and thickness of formations drilled through. Show intervals cored or drillstem tested.

LEASE NAME Okarche

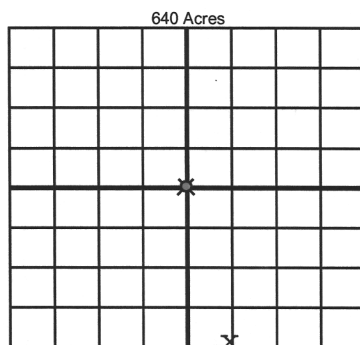
WELL NO. 1407 3H-12X

NAMES OF FORMATIONS	TOP
Mississippian	8083
Woodford	9424

FOR COMMISSION USE ONLY	
ITD on file <input type="checkbox"/> YES <input type="checkbox"/> NO	
APPROVED _____	DISAPPROVED _____
2) Reject Codes	

Were open hole logs run?	_____ yes _____ no
Date Last log was run	_____
Was CO ₂ encountered?	_____ yes _____ no at what depths? _____
Was H ₂ S encountered?	_____ yes _____ no at what depths? _____
Were unusual drilling circumstances encountered?	_____ yes _____ no
If yes, briefly explain below	

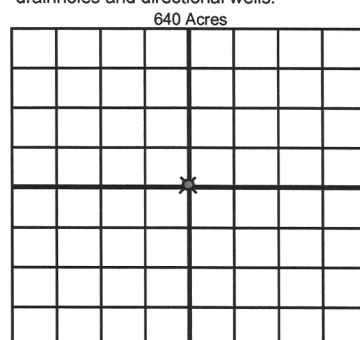
Other remarks: The Commission asked Newfield to re-submit the 1002A to include both Miss and Woodford Formations for Completion 2/14/2018



If more than three drainholes are proposed, attach a separate sheet indicating the necessary information.

Direction must be stated in degrees azimuth. Please note, the horizontal drainhole and its end point must be located within the boundaries of the lease or spacing unit.

Directional surveys are required for all drainholes and directional wells.



BOTTOM HOLE LOCATION FOR DIRECTIONAL HOLE

SEC	TWP	RGE	COUNTY
Spot Location	1/4	1/4	1/4
Measured Total Depth	True Vertical Depth	Feet From 1/4 Sec Lines FSL _____ FWL _____	
BHL From Lease, Unit, or Property Line:			

BOTTOM HOLE LOCATION FOR HORIZONTAL HOLE: (LATERALS)

LATERAL #1			
SEC	TWP	RGE	COUNTY
SEC 13	TWP 14N	RGE 7W	COUNTY Canadian
Spot Location	SW 1/4	SE 1/4	SW 1/4 SE 1/4
Depth of Deviation	8135	Radius of Turn	750
Measured Total Depth	18865	Direction	178
True Vertical Depth	8661	Total Length	10078
BHL From Lease, Unit, or Property Line: 95			

LATERAL #2			
SEC	TWP	RGE	COUNTY
Spot Location	1/4	1/4	1/4
Depth of Deviation	Radius of Turn	Direction	Total Length
Measured Total Depth	True Vertical Depth	BHL From Lease, Unit, or Property Line:	

LATERAL #3			
SEC	TWP	RGE	COUNTY
Spot Location	1/4	1/4	1/4
Depth of Deviation	Radius of Turn	Direction	Total Length
Measured Total Depth	True Vertical Depth	BHL From Lease, Unit, or Property Line:	