

Oklahoma Corporation Commission
Oil & Gas Conservation Division
Post Office Box 52000
Oklahoma City, Oklahoma 73152-2000
Rule 165: 10-3-25

Form 1002A

API No.: 35081243030001

Completion Report

Spud Date: June 04, 2018

OTC Prod. Unit No.: 081-224305

Drilling Finished Date: June 30, 2018

1st Prod Date: October 08, 2018

Completion Date: October 01, 2018

Drill Type: DIRECTIONAL HOLE

HORIZONTAL HOLE

Min Gas Allowable: Yes

Well Name: TANGLEWOOD 1-6H

Purchaser/Measurer: KINDER MORGAN

Location: LINCOLN 8 13N 5E
SE NW NE SW
2173 FSL 1860 FWL of 1/4 SEC
Derrick Elevation: 882 Ground Elevation: 865

First Sales Date: 10/08/2018

Operator: MONTCLAIR ENERGY LLC 22644

3509 FRENCH PARK DR STE B
EDMOND, OK 73034-7291

Completion Type		Location Exception		Increased Density	
X	Single Zone	Order No		Order No	
	Multiple Zone	688511		There are no Increased Density records to display.	
	Commingled				

Casing and Cement							
Type	Size	Weight	Grade	Feet	PSI	SAX	Top of CMT
SURFACE	9 5/8	32.3	J-55	174	500	160	SURFACE
PRODUCTION	7	26	N-80	6730	1500	300	4880

Liner								
Type	Size	Weight	Grade	Length	PSI	SAX	Top Depth	Bottom Depth
There are no Liner records to display.								

Total Depth: 11984

Packer		Plug	
Depth	Brand & Type	Depth	Plug Type
There are no Packer records to display.		There are no Plug records to display.	

Initial Test Data

Test Date	Formation	Oil BBL/Day	Oil-Gravity (API)	Gas MCF/Day	Gas-Oil Ratio Cu FT/BBL	Water BBL/Day	Pumpin or Flowing	Initial Shut-In Pressure	Choke Size	Flow Tubing Pressure
Nov 05, 2018	HUNTON	22	45	310	14090	1870	PUMPING			

Completion and Test Data by Producing Formation

Formation Name: HUNTON

Code: 269HNTN

Class: OIL

Spacing Orders

Order No	Unit Size
636536	640

Perforated Intervals

From	To
There are no Perf. Intervals records to display.	

Acid Volumes

16,000 GALLONS 15% HCL

Fracture Treatments

There are no Fracture Treatments records to display.

Formation	Top
OSWEGO LIME	4693
PRUE	4836
BARTLESVILLE	5530
CANEY	5941
WOODFORD SHALE	6400
HUNTON LIME	6559
SYLVAN SHALE	6683

Were open hole logs run? No

Date last log run:

Were unusual drilling circumstances encountered? No

Explanation:

Other Remarks

OCC - THIS WELL IS AN OPEN HOLE COMPLETION FROM 2 LATERALS FROM HOLE CUT IN 7" CASING AT 6,579' TO TERMINUS AT 11,984' LATERAL 1 AND 11,000' LATERAL 2.

Bottom Holes

Sec: 6 TWP: 13N RGE: 5E County: LINCOLN

NW SE SE SE

464 FSL 2292 FWL of 1/4 SEC

Depth of Deviation: 0 Radius of Turn: 0 Direction: 0 Total Length: 0

Measured Total Depth: 6745 True Vertical Depth: 4711 End Pt. Location From Release, Unit or Property Line: 350

Lateral Holes

Sec: 6 TWP: 13N RGE: 5E County: LINCOLN

SE SE NW NW

1006 FNL 1263 FWL of 1/4 SEC

Depth of Deviation: 6579 Radius of Turn: 90 Direction: 315 Total Length: 5405

Measured Total Depth: 11984 True Vertical Depth: 4694 End Pt. Location From Release, Unit or Property Line: 1006

Sec: 6 TWP: 13N RGE: 5E County: LINCOLN

NW SW NE NE

663 FNL 1302 FEL of 1/4 SEC

Depth of Deviation: 6718 Radius of Turn: 210 Direction: 355 Total Length: 4282

Measured Total Depth: 11000 True Vertical Depth: 4683 End Pt. Location From Release, Unit or Property Line: 663

FOR COMMISSION USE ONLY

Status: Accepted1142057

API NO. 081 24303
OTC PROD. 081224305
UNIT NO.

(PLEASE TYPE OR USE BLACK INK ONLY)

OKLAHOMA CORPORATION COMMISSION

Oil & Gas Conservation Division

Post Office Box 52000

Oklahoma City, Oklahoma 73152-2000

Rule 165:10-3-25

RECEIVED

FEB 01 2019

Oklahoma Corporation
Commission

Form 1002A

Rev. 2009

☒ ORIGINAL
☐ AMENDED (Reason)

COMPLETION REPORT

TYPE OF DRILLING OPERATION

☐ STRAIGHT HOLE ☒ DIRECTIONAL HOLE ☒ HORIZONTAL HOLE
☐ SERVICE WELL

If directional or horizontal, see reverse for bottom hole location.

COUNTY LINCOLN SEC 8 TWP 13N RGE 05E
LEASE NAME TANGLEWOOD WELL NO. 1-6H
SE 1/4 NW 1/4 NE 1/4 SW 1/4 FSL OF 1/4 SEC 2173 FWL OF 1/4 SEC 1860
ELEVATION Derrick FL 882' Ground 865' Latitude (if known) 35 38' 07.2"N Longitude (if known) 96 49' 06.8"W
OPERATOR NAME MONTCLAIR ENERGY, LLC OTC/OCC OPERATOR NO. 22644
ADDRESS 3509 FRENCH PARK DR. SUITE B
CITY EDMOND STATE OK ZIP 73034

SPUD DATE 6/4/2018
DRLG FINISHED DATE 6/30/2018
DATE OF WELL COMPLETION 10/1/2018
1st PROD DATE 10/8/2018
RECOMP DATE

640 Acres
W E
LOCATE WELL

COMPLETION TYPE

☒ SINGLE ZONE
☐ MULTIPLE ZONE
Application Date
☐ COMMINGLED
Application Date
LOCATION EXCEPTION ORDER NO. 688511 F.D.
INCREASED DENSITY ORDER NO.

CASING & CEMENT (Form 1002C must be attached)

TYPE	SIZE	WEIGHT	GRADE	FEET	PSI	SAX	TOP OF CMT
CONDUCTOR							
SURFACE	9 5/8	32.3	J-55	174	500	160	Surface
INTERMEDIATE							
PRODUCTION	7	26	N-80	6730	1500	300 250	4880'
LINER							

Per 1002C

PACKER @ BRAND & TYPE PLUG @ TYPE PLUG @ TYPE
PACKER @ BRAND & TYPE PLUG @ TYPE PLUG @ TYPE

TOTAL DEPTH 11,984

COMPLETION & TEST DATA BY PRODUCING FORMATION

FORMATION HUNTON
SPACING & SPACING ORDER NUMBER 640 / 636536
CLASS: Oil, Gas, Dry, Inj, Disp, Comm Disp, Svc Oil
PERFORATED INTERVALS OPEN HOLE
6579-11984'
6718-11000'
ACID/VOLUME 15% HCl/16000 Gals
FRACTURE TREATMENT (Fluids/Prop Amounts)

No Frac

☒ Min Gas Allowable (165:10-17-7)
OR
☐ Oil Allowable (165:10-13-3)

Gas Purchaser/Measurer
First Sales Date

KINDER MORGAN
10/8/2018

INITIAL TEST DATA

INITIAL TEST DATE 11/5/2018
OIL-BBL/DAY 22
OIL-GRAVITY (API) 45
GAS-MCF/DAY 310
GAS-OIL RATIO CU FT/BBL 14090
WATER-BBL/DAY 1870
PUMPING OR FLOWING PUMPING
INITIAL SHUT-IN PRESSURE
CHOKE SIZE
FLOW TUBING PRESSURE

AS SUBMITTED

A record of the formations drilled through, and pertinent remarks are presented on the reverse. I declare that I have knowledge of the contents of this report and am authorized by my organization to make this report, which was prepared by me or under my supervision and direction, with the data and facts stated herein to be true, correct, and complete to the best of my knowledge and belief.

SIGNATURE ALAN STRACKE 1/28/2019 405-341-8822
3509 FRENCH PARK DR. STE B EDMOND OK 73034
ADDRESS CITY STATE ZIP ALAN.STRACKE@ATT.NET
EMAIL ADDRESS

PLEASE TYPE OR USE BLACK INK ONLY
FORMATION RECORD

Give formation names and tops, if available, or descriptions and thickness of formations drilled through. Show intervals cored or drillstem tested.

LEASE NAME TANGLEWOOD WELL NO. 1-6H

NAMES OF FORMATIONS	TOP
OSWEGO LIME	4693' (MD) 3595' (TVD)
PRUE	4836' (MD) 3680' (TVD)
BARTLESVILLE	5530' (MD) 4108' (TVD)
CANEY	5941' (MD) 4365' (TVD)
WOODFORD SHALE	6400' (MD) 4606' (TVD)
HUNTON LIME	6559' (MD) 4660' (TVD)
SYLVAN SHALE	6683' (MD) 4695' (TVD)

FOR COMMISSION USE ONLY

ITD on file ☐ YES ☐ NO

APPROVED _____ DISAPPROVED _____

2) Reject Codes _____

Were open hole logs run? _____ yes ☒ no

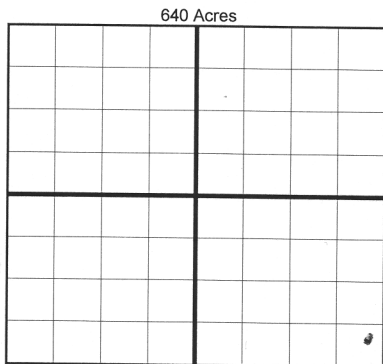
Date Last log was run _____

Was CO₂ encountered? _____ yes ☒ no at what depths? _____

Was H₂S encountered? _____ yes ☒ no at what depths? _____

Were unusual drilling circumstances encountered? _____ yes ☒ no
If yes, briefly explain below _____

Other remarks: *OCC - This well is an open hole completion from 2 laterals from hole cut in 7" casing at 6579' to terminus at 11,984' lateral 1 and 11,000' lateral 2.*



BOTTOM HOLE LOCATION FOR DIRECTIONAL HOLE

SEC 6	TWP 13N	RGE 05E	COUNTY LINCOLN
Spot Location NW 1/4 SE 1/4 SE 1/4	SE 1/4	SE 1/4	SE 1/4
Feet From 1/4 Sec Lines	FSL 464	FWL 2292	
Measured Total Depth 6745	True Vertical Depth 4711	BHL From Lease, Unit, or Property Line: 350	

BOTTOM HOLE LOCATION FOR HORIZONTAL HOLE: (LATERALS)

LATERAL #1 *Per LF*

SEC 6	TWP 13N	RGE 05E	COUNTY LINCOLN
Spot Location SE 1/4 SE 1/4 NW 1/4 NW 1/4	SE 1/4	SE 1/4	SE 1/4
Feet From 1/4 Sec Lines	FSL 1605 <i>FNL 1006</i>	FWL 1263	
Depth of Deviation 6,579	Radius of Turn 90	Direction 315	Total Length 5405'
Measured Total Depth 11,984	True Vertical Depth 4,694	BHL From Lease, Unit, or Property Line: 1006	

LATERAL #2 *Per LF*

SEC 6	TWP 13N	RGE 05E	COUNTY LINCOLN
Spot Location NW 1/4 SW 1/4 NE 1/4 NE 1/4	SW 1/4	NE 1/4	NE 1/4
Feet From 1/4 Sec Lines	FSL 1958 <i>FNL 663</i>	FWL 1292 <i>FEL 1302</i>	
Depth of Deviation 6718	Radius of Turn 210	Direction 355 354	Total Length 4282'
Measured Total Depth 11000	True Vertical Depth 4683	BHL From Lease, Unit, or Property Line: 663	

LATERAL #3

SEC	TWP	RGE	COUNTY
Spot Location 1/4 1/4 1/4 1/4	1/4	1/4	1/4
Feet From 1/4 Sec Lines	FSL	FWL	
Depth of Deviation	Radius of Turn	Direction	Total Length
Measured Total Depth	True Vertical Depth	BHL From Lease, Unit, or Property Line:	

If more than three drainholes are proposed, attach a separate sheet indicating the necessary information.

Direction must be stated in degrees azimuth. Please note, the horizontal drainhole and its end point must be located within the boundaries of the lease or spacing unit.

Directional surveys are required for all drainholes and directional wells.

