

Oklahoma Corporation Commission
Oil & Gas Conservation Division
Post Office Box 52000
Oklahoma City, Oklahoma 73152-2000
Rule 165: 10-3-25

Form 1002A

API No.: 35103247440000

Completion Report

Spud Date: October 19, 2018

OTC Prod. Unit No.: 103-224704

Drilling Finished Date: October 22, 2018

1st Prod Date: March 10, 2019

Completion Date: December 14, 2018

Drill Type: STRAIGHT HOLE

Well Name: TOMCAT 2

Purchaser/Measurer:

Location: NOBLE 31 24N 1W
NW NW NW SW
2475 FSL 215 FWL of 1/4 SEC
Derrick Elevation: 978 Ground Elevation: 965

First Sales Date:

Operator: DONRAY PETROLEUM LLC 21690

2525 NW EXPRESSWAY STE 640
OKLAHOMA CITY, OK 73112-7230

Completion Type		Location Exception		Increased Density	
X	Single Zone	Order No		Order No	
	Multiple Zone	There are no Location Exception records to display.		There are no Increased Density records to display.	
	Commingled				

Casing and Cement							
Type	Size	Weight	Grade	Feet	PSI	SAX	Top of CMT
SURFACE	8 5/8	23		378		200	SURFACE
PRODUCTION	5.5	17		2460		185	1300

Liner								
Type	Size	Weight	Grade	Length	PSI	SAX	Top Depth	Bottom Depth
There are no Liner records to display.								

Total Depth: 2460

Packer		Plug	
Depth	Brand & Type	Depth	Plug Type
There are no Packer records to display.		2460	CIBP

Initial Test Data										
Test Date	Formation	Oil BBL/Day	Oil-Gravity (API)	Gas MCF/Day	Gas-Oil Ratio Cu FT/BBL	Water BBL/Day	Pumpin or Flowing	Initial Shut-In Pressure	Choke Size	Flow Tubing Pressure
Mar 12, 2019	HOOVER	3	40	10	3333	350	PUMPING	120		

Completion and Test Data by Producing Formation			
Formation Name: HOOVER		Code: 406HOVR	Class: OIL
Spacing Orders		Perforated Intervals	
Order No	Unit Size	From	To
NONE		2054	2066
Acid Volumes		Fracture Treatments	
750 GALLONS 12.5% HCL		870 BSW, 30,000 POUNDS 20/40 SAND	

Formation	Top
HOOVER	2000
OREAD	2350

Were open hole logs run? Yes
Date last log run: October 22, 2018

Were unusual drilling circumstances encountered? No
Explanation:

Other Remarks
HAD TO WAIT ON ELECTRIC AND WEATHER IS REASON FOR COMPLETION DELAY.

FOR COMMISSION USE ONLY	
Status: Accepted	1142572

API NO.	10324744
OTC PROD. UNIT NO.	103224704

(PLEASE TYPE OR USE BLACK INK ONLY)

OKLAHOMA CORPORATION COMMISSION
Oil & Gas Conservation Division
Post Office Box 52000
Oklahoma City, Oklahoma 73152-2000
Rule 165:10-3-25

RECEIVED

Form 1002A
Rev. 2009

APR 12 2019

OKLAHOMA CORPORATION COMMISSION

☒ ORIGINAL
☐ AMENDED (Reason) _____

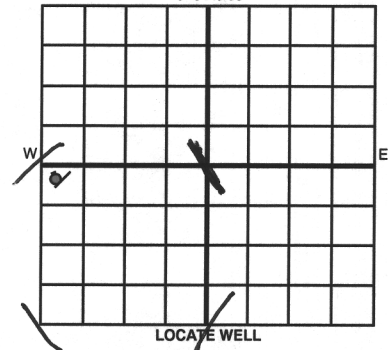
COMPLETION REPORT

TYPE OF DRILLING OPERATION

☒ STRAIGHT HOLE ☐ DIRECTIONAL HOLE ☐ HORIZONTAL HOLE
☐ SERVICE WELL

If directional or horizontal, see reverse for bottom hole location.

COUNTY	noble	SEC	31	TWP	24n	RGE	1w	SPUD DATE	10/19/18	
LEASE NAME	tomcat			WELL NO.	2	DRLG FINISHED DATE	10/22/18	DATE OF WELL COMPLETION	12/14/18	
NW 1/4	NW 1/4	NW 1/4	SW 1/4	FSL OF 1/4 SEC	2475	PWL OF 1/4 SEC	215	1st PROD DATE	3/10/19	
ELEVATION Derrick FL	978	Ground	965	Latitude (if known)					Longitude (if known)	
OPERATOR NAME	donray petroleum llc.				OTC / OCC OPERATOR NO.	21690				
ADDRESS	2525 nw expressway									
CITY	okc	STATE	okla	ZIP	73112					



COMPLETION TYPE

<input checked="" type="checkbox"/> SINGLE ZONE	
<input type="checkbox"/> MULTIPLE ZONE	
<input type="checkbox"/> COMMINGLED	
<input type="checkbox"/> LOCATION EXCEPTION ORDER NO.	
<input type="checkbox"/> INCREASED DENSITY ORDER NO.	

CASING & CEMENT (Attach Form 1002C)

TYPE	SIZE	WEIGHT	GRADE	FEET	PSI	SAX	TOP OF CMT
CONDUCTOR							
SURFACE	8 5/8	23#		378		200	surf.
INTERMEDIATE							
PRODUCTION	5.5	17#		2460		185	1300
LINER							
						TOTAL DEPTH	2,460

PACKER @ _____ BRAND & TYPE _____ PLUG @ 2460 TYPE cibp PLUG @ _____ TYPE _____
PACKER @ _____ BRAND & TYPE _____ PLUG @ 406 TYPE _____ PLUG @ _____ TYPE _____

COMPLETION & TEST DATA BY PRODUCING FORMATION

FORMATION	Hoover						Monitor
SPACING & SPACING ORDER NUMBER	none						Report to HactFocus
CLASS: Oil, Gas, Dry, Inj, Disp, Comm Disp, Svc	oil						
PERFORATED INTERVALS	2054-66						
ACID/VOLUME	750 gal 12.5% hcl						
FRACTURE TREATMENT (Fluids/Prop Amounts)	870 bsw						
	30,000# 20/40 snd						

Min Gas Allowable (165:10-17-7)

Gas Purchaser/Measurer

☐

OR

First Sales Date

Oil Allowable (165:10-13-3)

INITIAL TEST DATA

INITIAL TEST DATE	3/12/2019					
OIL-BBL/DAY	3 bpd					
OIL-GRAVITY (API)	40					
GAS-MCF/DAY	10mcfpd					
GAS-OIL RATIO CU FT/BBL	3333					
WATER-BBL/DAY	350 bpd					
PUMPING OR FLOWING	pump					
INITIAL SHUT-IN PRESSURE	120#					
CHOKE SIZE						
FLOW TUBING PRESSURE						

AS SUBMITTED

A record of the formations drilled through, and pertinent remarks are presented on the reverse. I declare that I have knowledge of the contents of this report and am authorized by my organization to make this report which was prepared by me or under my supervision and direction, with the data and facts stated herein to be true, correct, and complete to the best of my knowledge and belief.

SIGNATURE	ray corbitt jr	DATE	4/9/2019	PHONE NUMBER	(405) 418-4348
ADDRESS	2525 nw expressway #640	CITY	okc	STATE	ok
		ZIP	73112	EMAIL ADDRESS	ray@donraypetroleum.com

PLEASE TYPE OR USE BLACK INK ONLY

FORMATION RECORD

Give formation names and tops, if available, or descriptions and thickness of formations drilled through. Show intervals cored or drillstem tested.

NAMES OF FORMATIONS	TOP
hoover	2,000
oread	2350

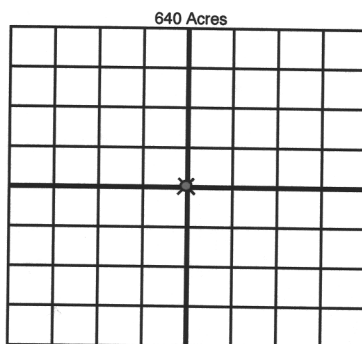
LEASE NAME tomcat

WELL NO. #2

FOR COMMISSION USE ONLY	
ITD on file <input type="checkbox"/> YES <input type="checkbox"/> NO	
APPROVED _____	DISAPPROVED _____
2) Reject Codes	

Were open hole logs run?	<input checked="" type="checkbox"/> yes <input type="checkbox"/> no
Date Last log was run	<u>10/22/2018</u>
Was CO ₂ encountered?	<input type="checkbox"/> yes <input checked="" type="checkbox"/> no at what depths? _____
Was H ₂ S encountered?	<input type="checkbox"/> yes <input checked="" type="checkbox"/> no at what depths? _____
Were unusual drilling circumstances encountered?	<input type="checkbox"/> yes <input checked="" type="checkbox"/> no
If yes, briefly explain below	

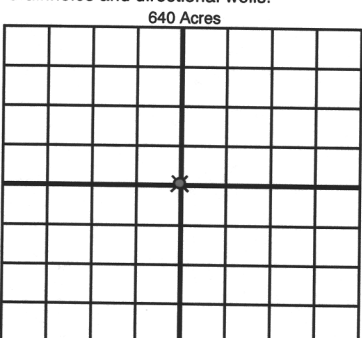
Other remarks: had to wait on electric and weather is reason for completion delay



If more than three drainholes are proposed, attach a separate sheet indicating the necessary information.

Direction must be stated in degrees azimuth.
Please note, the horizontal drainhole and its end point must be located within the boundaries of the lease or spacing unit.

Directional surveys are required for all drainholes and directional wells.



BOTTOM HOLE LOCATION FOR DIRECTIONAL HOLE

SEC	TWP	RGE	COUNTY
Spot Location			
1/4	1/4	1/4	1/4
Measured Total Depth		True Vertical Depth	Feet From 1/4 Sec Lines FSL _____ FWL _____
BHL From Lease, Unit, or Property Line: _____			

BOTTOM HOLE LOCATION FOR HORIZONTAL HOLE: (LATERALS)

LATERAL #1			
SEC	TWP	RGE	COUNTY
Spot Location			
1/4	1/4	1/4	1/4
Depth of Deviation		Radius of Turn	Direction
Measured Total Depth		True Vertical Depth	Total Length
BHL From Lease, Unit, or Property Line: _____			

LATERAL #2			
SEC	TWP	RGE	COUNTY
Spot Location			
1/4	1/4	1/4	1/4
Depth of Deviation		Radius of Turn	Direction
Measured Total Depth		True Vertical Depth	Total Length
BHL From Lease, Unit, or Property Line: _____			

LATERAL #3			
SEC	TWP	RGE	COUNTY
Spot Location			
1/4	1/4	1/4	1/4
Depth of Deviation		Radius of Turn	Direction
Measured Total Depth		True Vertical Depth	Total Length
BHL From Lease, Unit, or Property Line: _____			