

Oklahoma Corporation Commission  
Oil & Gas Conservation Division  
Post Office Box 52000  
Oklahoma City, Oklahoma 73152-2000  
Rule 165: 10-3-25

Form 1002A

API No.: 35103247470000

**Completion Report**

Spud Date: September 10, 2018

OTC Prod. Unit No.: 103-224702

Drilling Finished Date: September 13, 2018

1st Prod Date: March 15, 2019

Completion Date: February 08, 2019

**Drill Type: STRAIGHT HOLE**

Well Name: GRACE 20

Purchaser/Measurer:

Location: NOBLE 36 24N 2W  
SE SW NE NE  
1420 FSL 1815 FWL of 1/4 SEC  
Derrick Elevation: 979 Ground Elevation: 966

First Sales Date:

Operator: DONRAY PETROLEUM LLC 21690

2525 NW EXPRESSWAY STE 640  
OKLAHOMA CITY, OK 73112-7230

Completion Type		Location Exception		Increased Density	
X	Single Zone	Order No		Order No	
	Multiple Zone	There are no Location Exception records to display.		There are no Increased Density records to display.	
	Commingled				

Casing and Cement							
Type	Size	Weight	Grade	Feet	PSI	SAX	Top of CMT
SURFACE	8 5/8	23		252		185	SURFACE
PRODUCTION	5.5	17		2290		185	1300

Liner								
Type	Size	Weight	Grade	Length	PSI	SAX	Top Depth	Bottom Depth
There are no Liner records to display.								

**Total Depth: 2290**

Packer		Plug	
Depth	Brand & Type	Depth	Plug Type
There are no Packer records to display.		2290	CIBP

Initial Test Data										
Test Date	Formation	Oil BBL/Day	Oil-Gravity (API)	Gas MCF/Day	Gas-Oil Ratio Cu FT/BBL	Water BBL/Day	Pumpin or Flowing	Initial Shut-In Pressure	Choke Size	Flow Tubing Pressure
Mar 15, 2019	HOOVER	18	40	45	2500	450	PUMPING	200		

Completion and Test Data by Producing Formation			
Formation Name: HOOVER		Code: 406HOVR	Class: OIL
<b>Spacing Orders</b>		<b>Perforated Intervals</b>	
<b>Order No</b>	<b>Unit Size</b>	<b>From</b>	<b>To</b>
NONE		2030	2084
<b>Acid Volumes</b>		<b>Fracture Treatments</b>	
750 GALLONS 12.5% HCL		708 BSW, 24,000 POUNDS 20/40 SAND	

Formation	Top
HOOVER	2020

Were open hole logs run? Yes  
Date last log run: September 13, 2018  
  
Were unusual drilling circumstances encountered? No  
Explanation:

Other Remarks
HAD TO WAIT ON WEATHER AND ELECTRIC IS THE REASON FOR COMPLETION DELAYS.

FOR COMMISSION USE ONLY	
Status: Accepted	1142576



PLEASE TYPE OR USE BLACK INK ONLY  
FORMATION RECORD

Give formation names and tops, if available, or descriptions and thickness of formations drilled through. Show intervals cored or drillstem tested.

LEASE NAME grace WELL NO. 20

NAMES OF FORMATIONS	TOP
hoover	2,020

FOR COMMISSION USE ONLY

ITD on file ☐ YES ☐ NO

APPROVED \_\_\_\_\_ DISAPPROVED \_\_\_\_\_

2) Reject Codes

\_\_\_\_\_

\_\_\_\_\_

\_\_\_\_\_

\_\_\_\_\_

Were open hole logs run? ☒ yes ☐ no

Date Last log was run 9/13/2018

Was CO<sub>2</sub> encountered? ☐ yes ☒ no at what depths? \_\_\_\_\_

Was H<sub>2</sub>S encountered? ☐ yes ☒ no at what depths? \_\_\_\_\_

Were unusual drilling circumstances encountered? ☐ yes ☒ no

If yes, briefly explain below

Other remarks: had to wait on weather and electric is the reason for completion delays

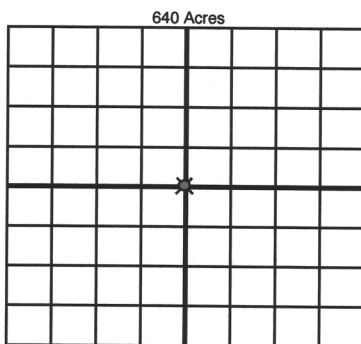
\_\_\_\_\_

\_\_\_\_\_

\_\_\_\_\_

\_\_\_\_\_

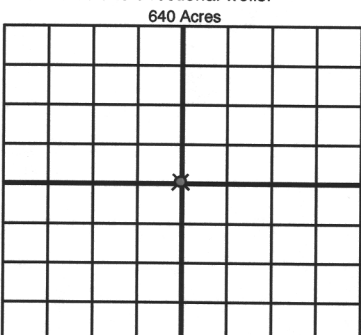
\_\_\_\_\_



If more than three drainholes are proposed, attach a separate sheet indicating the necessary information.

Direction must be stated in degrees azimuth.  
Please note, the horizontal drainhole and its end point must be located within the boundaries of the lease or spacing unit.

Directional surveys are required for all drainholes and directional wells.



BOTTOM HOLE LOCATION FOR DIRECTIONAL HOLE

SEC	TWP	RGE	COUNTY
Spot Location			
1/4	1/4	1/4	1/4
Measured Total Depth		True Vertical Depth	Feet From 1/4 Sec Lines FSL FWL
BHL From Lease, Unit, or Property Line:			

BOTTOM HOLE LOCATION FOR HORIZONTAL HOLE: (LATERALS)

LATERAL #1

SEC	TWP	RGE	COUNTY
Spot Location			
1/4	1/4	1/4	1/4
Depth of Deviation	Radius of Turn	Direction	Total Length
Measured Total Depth	True Vertical Depth	BHL From Lease, Unit, or Property Line:	

LATERAL #2

SEC	TWP	RGE	COUNTY
Spot Location			
1/4	1/4	1/4	1/4
Depth of Deviation	Radius of Turn	Direction	Total Length
Measured Total Depth	True Vertical Depth	BHL From Lease, Unit, or Property Line:	

LATERAL #3

SEC	TWP	RGE	COUNTY
Spot Location			
1/4	1/4	1/4	1/4
Depth of Deviation	Radius of Turn	Direction	Total Length
Measured Total Depth	True Vertical Depth	BHL From Lease, Unit, or Property Line:	