

Oklahoma Corporation Commission  
Oil & Gas Conservation Division  
Post Office Box 52000  
Oklahoma City, Oklahoma 73152-2000  
Rule 165: 10-3-25

Form 1002A

API No.: 35141205200000

**Completion Report**

Spud Date: December 14, 2018

OTC Prod. Unit No.: 141-225032

Drilling Finished Date: December 20, 2018

1st Prod Date: February 09, 2019

Completion Date: January 21, 2019

**Drill Type:** DIRECTIONAL HOLE

Well Name: O & O FARM & RANCH 1-R

Purchaser/Measurer:

Location: TILLMAN 13 3S 18W  
NW SW NW NW  
900 FNL 200 FWL of 1/4 SEC  
Derrick Elevation: 0 Ground Elevation: 1187

First Sales Date:

Operator: AC OPERATING COMPANY LLC 23061

952 ECHO LN STE 390  
HOUSTON, TX 77024-2851

Completion Type	
X	Single Zone
	Multiple Zone
	Commingled

Location Exception
Order No
694228

Increased Density
Order No
There are no Increased Density records to display.

Casing and Cement							
Type	Size	Weight	Grade	Feet	PSI	SAX	Top of CMT
CONDUCTOR	16			40		200	SURFACE
SURFACE	9 5/8	36	J-55	354		220	SURFACE
PRODUCTION	5 1/2	17	L-80	5750		390	3850

Liner								
Type	Size	Weight	Grade	Length	PSI	SAX	Top Depth	Bottom Depth
There are no Liner records to display.								

**Total Depth: 5800**

Packer	
Depth	Brand & Type
There are no Packer records to display.	

Plug	
Depth	Plug Type
There are no Plug records to display.	

Initial Test Data
-------------------

Test Date	Formation	Oil BBL/Day	Oil-Gravity (API)	Gas MCF/Day	Gas-Oil Ratio Cu FT/BBL	Water BBL/Day	Pumpin or Flowing	Initial Shut-In Pressure	Choke Size	Flow Tubing Pressure
Feb 25, 2019	MISSISSIPPIAN	32	37.2			24	PUMPING	100		

<b>Completion and Test Data by Producing Formation</b>															
Formation Name: MISSISSIPPIAN		Code: 359MSSP	Class: OIL												
<table border="1" style="width:100%; border-collapse: collapse;"> <tr><th colspan="2">Spacing Orders</th></tr> <tr> <th>Order No</th> <th>Unit Size</th> </tr> <tr> <td>677717</td> <td>80</td> </tr> </table>		Spacing Orders		Order No	Unit Size	677717	80	<table border="1" style="width:100%; border-collapse: collapse;"> <tr><th colspan="2">Perforated Intervals</th></tr> <tr> <th>From</th> <th>To</th> </tr> <tr> <td>5024</td> <td>5046</td> </tr> </table>		Perforated Intervals		From	To	5024	5046
Spacing Orders															
Order No	Unit Size														
677717	80														
Perforated Intervals															
From	To														
5024	5046														
<table border="1" style="width:100%; border-collapse: collapse;"> <tr><th colspan="2">Acid Volumes</th></tr> <tr> <td colspan="2">1,500 GALLONS 15% HCL</td> </tr> </table>		Acid Volumes		1,500 GALLONS 15% HCL		<table border="1" style="width:100%; border-collapse: collapse;"> <tr><th colspan="2">Fracture Treatments</th></tr> <tr> <td colspan="2">There are no Fracture Treatments records to display.</td> </tr> </table>		Fracture Treatments		There are no Fracture Treatments records to display.					
Acid Volumes															
1,500 GALLONS 15% HCL															
Fracture Treatments															
There are no Fracture Treatments records to display.															

Formation	Top
TOP HENDERSON	2940
TOP CANYON	3115
TOP STRAWN	3980

Were open hole logs run? Yes  
Date last log run: December 19, 2018  
  
Were unusual drilling circumstances encountered? No  
Explanation:

<b>Other Remarks</b>
SEE ATTACHED "AS-DRILLED" PLAT. OCC - THIS 80 ACRE SPACED UNIT IS IRREGULAR IN THAT IT COSIST OF THE NE NE OF SECTION 14 AND THE NW NW SECTION 13 - 3 SOUTH - 18 WEST.

<b>Bottom Holes</b>
<p>Sec: 14 TWP: 3S RGE: 18W County: TILLMAN</p> <p>NE   SE   NE   NE</p> <p>708 FNL   104 FEL of 1/4 SEC</p> <p>Depth of Deviation: 0 Radius of Turn: 0 Direction: 0 Total Length: 0</p> <p>Measured Total Depth: 5800 True Vertical Depth: 5764   End Pt. Location From Release, Unit or Property Line: 612</p>

<b>FOR COMMISSION USE ONLY</b>	
Status: Accepted	1142531

API NO. 141-20520  
OTC PROD. UNIT NO. 141-225032

(PLEASE TYPE OR USE BLACK INK ONLY)

OKLAHOMA CORPORATION COMMISSION

Oil & Gas Conservation Division

Post Office Box 52000

Oklahoma City, Oklahoma 73152-2000

Rule 165:10-3-25

RECEIVED

APR 05 2019

OKLAHOMA CORPORATION COMMISSION

Form 1002A

Rev. 2009

☒ ORIGINAL  
☐ AMENDED (Reason)

TYPE OF DRILLING OPERATION

☐ STRAIGHT HOLE ☒ DIRECTIONAL HOLE ☐ HORIZONTAL HOLE  
☐ SERVICE WELL

If directional or horizontal, see reverse for bottom hole location.

COUNTY Tillman SEC 13 TWP 03s RGE 18w  
LEASE NAME O & O Farm & Ranch WELL NO. 1-R  
NW 1/4 SW 1/4 NW 1/4 NW 1/4 FNL OF 900 FWL OF 200  
ELEVATION Ground 1187 Latitude (if known)  
OPERATOR NAME AC Operating Company, LLC OTC/OCC OPERATOR NO. 23061  
ADDRESS 952 Echo Lane, Suite 390  
CITY Houston STATE Texas ZIP 77024

SPUD DATE 12/14/2018  
DRLG FINISHED DATE 12/20/2018  
DATE OF WELL COMPLETION 01/21/2019  
1st PROD DATE 02/09/2019  
RECOMP DATE  
Longitude (if known)

640 Acres  
W E  
LOCATE WELL

COMPLETION TYPE

☒ SINGLE ZONE  
☐ MULTIPLE ZONE  
Application Date  
COMINGLED  
Application Date  
LOCATION EXCEPTION  
ORDER NO. 694228FO  
INCREASED DENSITY  
ORDER NO. Pending receipt

CASING & CEMENT (Form 1002C must be attached)

TYPE	SIZE	WEIGHT	GRADE	FEET	PSI	SAX	TOP OF CMT
CONDUCTOR	16			40		200	Surface
SURFACE	9 5/8	36	J-55	354		220	Surface
INTERMEDIATE							
PRODUCTION	5 1/2	17	L-80	5,750		390	3850'
LINER							
						TOTAL DEPTH	5,800'

PACKER @ BRAND & TYPE PLUG @ TYPE PLUG @ TYPE  
PACKER @ BRAND & TYPE PLUG @ TYPE PLUG @ TYPE

COMPLETION & TEST DATA BY PRODUCING FORMATION

FORMATION Mississippian  
SPACING & SPACING ORDER NUMBER 677717(40)  
CLASS: Oil, Gas, Dry, Inj, Disp, Comm Disp, Svc Oil  
PERFORATED INTERVALS 5,024-46' (TVD)  
ACID/VOLUME 1500g 15% HCl  
FRACTURE TREATMENT (Fluids/Prop Amounts)  
No Frac

Min Gas Allowable (165:10-17-7) Gas Purchaser/Measurer  
OR  
Oil Allowable (165:10-13-3) First Sales Date

INITIAL TEST DATA

INITIAL TEST DATE 2/25/2019  
OIL-BBL/DAY 32  
OIL-GRAVITY (API) 37.2  
GAS-MCF/DAY  
GAS-OIL RATIO CU FT/BBL  
WATER-BBL/DAY 24.0  
PUMPING OR FLOWING Pumping  
INITIAL SHUT-IN PRESSURE 100 psi  
CHOKE SIZE  
FLOW TUBING PRESSURE

AS SUBMITTED

A record of the formations drilled through, and pertinent remarks are presented on the reverse. I declare that I have knowledge of the contents of this report and am authorized by my organization to make this report, which was prepared by me or under my supervision and direction, with the data and facts stated herein to be true, correct, and complete to the best of my knowledge and belief.

SIGNATURE Michael A. Odegard 3/19/2019 (713) 881-9030  
952 Echo Lane, Suite 390 Houston Texas 77024  
ADDRESS CITY STATE ZIP maodegard@acexploration.com EMAIL ADDRESS

## FORMATION RECORD

LEASE NAME Heap WELL NO. 1

[illegible]

FOR COMMISSION USE ONLY	
ITD on file	<input type="checkbox"/> YES <input type="checkbox"/> NO
APPROVED	DISAPPROVED
	2) Reject Codes <hr/> <hr/> <hr/> <hr/> <hr/>

Were open hole logs run?	<u>X</u>	yes	___	no
Date Last log was run	<u>12/19/2018</u>			
Was CO <sub>2</sub> encountered?	___	yes	<u>X</u>	no
			at what depths? _____	
Was H <sub>2</sub> S encountered?	___	yes	<u>X</u>	no
			at what depths? _____	
Were unusual drilling circumstances encountered?			___	yes
			<u>X</u>	no
If yes, briefly explain below				

Other remarks: See attached "As-Drilled" plat

640 Acres

x

Direction must be stated in degrees azimuth.  
Please note, the horizontal drainhole and its end point must be located within the boundaries of the lease or spacing unit.

640 Acres

A 10x10 grid representing 640 acres. The grid is divided into four 5x5 quadrants by a thick black cross. The text '640 Acres' is centered above the grid.

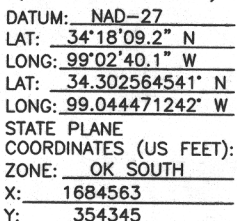
SEC 14	TWP 03S	RGE 18W	COUNTY	Tillman
Spot Location		708 FNL FEL 104		
NE 1/4	SE 1/4	NE 1/4	NE 1/4	
Measured Total Depth		Feet From 1/4 Sec Lines		
5,800'		ESL 612' FWL 1,216'		
True Vertical Depth		BHL From Lease, Unit, or Property Line:		
5,764'		612' - 612' ESL & 1,216' FWL		

LATERAL #1						
SEC	TWP	RGE	COUNTY			
Spot Location						
1/4		1/4		1/4		FWL
Feet From 1/4 Sec Lines		FSL		FWL		
Depth of Deviation		Radius of Turn		Direction		Total Length
Measured Total Depth		True Vertical Depth		BHL From Lease, Unit, or Property Line:		

SEC	TWP	RGE	COUNTY			
Spot Location						
1/4	1/4	1/4	1/4	Feet From 1/4 Sec Lines	FSL	FWL
Depth of Deviation		Radius of Turn		Direction	Total Length	
Measured Total Depth		True Vertical Depth		BHL From Lease, Unit, or Property Line:		

SEC	TWP	RGE	COUNTY			
Spot Location						
1/4	1/4	1/4	1/4	Feet From 1/4 Sec Lines	FSL	FWL
Depth of Deviation		Radius of Turn		Direction	Total Length	
Measured Total Depth		True Vertical Depth		BHL From Lease, Unit, or Property Line:		

## 3W 1M



AS-DRILLED INFORMATION  
FURNISHED BY AC EXPLORATION, LLC.