

Oklahoma Corporation Commission  
Oil & Gas Conservation Division  
Post Office Box 52000  
Oklahoma City, Oklahoma 73152-2000  
Rule 165: 10-3-25

Form 1002A

API No.: 35019258450002

**Completion Report**

Spud Date: March 07, 2013

OTC Prod. Unit No.: 019-210704

Drilling Finished Date: March 13, 2013

**Amended**

1st Prod Date: June 05, 2013

Amend Reason: ADD ADDITIONAL PERFORATIONS / CORRECT BOTTOM HOLE LOCATION

Completion Date: June 14, 2013

Recomplete Date: May 01, 2019

**Drill Type: DIRECTIONAL HOLE**

Well Name: GERALD 1

Purchaser/Measurer:

Location: CARTER 4 5S 1E  
NE SW SW SE  
520 FSL 370 FWL of 1/4 SEC  
Derrick Elevation: 0 Ground Elevation: 831

First Sales Date:

Operator: GLB EXPLORATION INC 18634

7716 MELROSE LN  
OKLAHOMA CITY, OK 73127-6002

Completion Type	
X	Single Zone
	Multiple Zone
	Commingle

Location Exception	
Order No	
617985	

Increased Density	
Order No	
There are no Increased Density records to display.	

Casing and Cement							
Type	Size	Weight	Grade	Feet	PSI	SAX	Top of CMT
CONDUCTOR	16	42	J-55	37		375	SURFACE
SURFACE	8 5/8	24	J-55	462	500	350	SURFACE
PRODUCTION	5 1/2	17	N-80	4605	1200	225	3250

Liner								
Type	Size	Weight	Grade	Length	PSI	SAX	Top Depth	Bottom Depth
There are no Liner records to display.								

**Total Depth: 4630**

Packer	
Depth	Brand & Type
There are no Packer records to display.	

Plug	
Depth	Plug Type
4254	COMPOSITE BRIDGE PLUG
4390	CIBP

Initial Test Data
-------------------

Test Date	Formation	Oil BBL/Day	Oil-Gravity (API)	Gas MCF/Day	Gas-Oil Ratio Cu FT/BBL	Water BBL/Day	Pumpin or Flowing	Initial Shut-In Pressure	Choke Size	Flow Tubing Pressure
May 01, 2019	TUSSY	76	35	78	1026		PUMPING	400		

Completion and Test Data by Producing Formation

Formation Name: TUSSY		Code: 404TSSY		Class: OIL	
Spacing Orders		Perforated Intervals			
Order No	Unit Size	From	To		
607718	40	4089	4101		
Acid Volumes		Fracture Treatments			
1,000 GALLONS DIESEL WITH 10% ACETIC ACID + 10% XYLENE		890 BARRELS 4% X-LINK GELLED KCL WATER + 55,282 POUNDS 20/40 SAND			

Formation	Top
TUSSY	3950

Were open hole logs run? No  
Date last log run:  
  
Were unusual drilling circumstances encountered? No  
Explanation:

Other Remarks
There are no Other Remarks.

Bottom Holes
Sec: 9 TWP: 5S RGE: 1E County: CARTER  SE   NW   NW   NE  368 FNL   548 FWL of 1/4 SEC  Depth of Deviation: 0 Radius of Turn: 0 Direction: 0 Total Length: 0  Measured Total Depth: 4630 True Vertical Depth: 4360   End Pt. Location From Release, Unit or Property Line: 368

FOR COMMISSION USE ONLY
<div>Status: Accepted</div> <div>1142947</div>

API NO. **019-25845**  
OTC PROD. UNIT NO. **019-210704**

PLEASE TYPE OR USE BLACK INK ONLY  
NOTE: Attach copy of original 1002A if recompletion or ree

OKLAHOMA CORPORATION COMMISSION  
Oil & Gas Conservation Division  
Post Office Box 52000  
Oklahoma City, Oklahoma 73152-2000  
Rule 165:10-3-25

**RECEIVED** Form 1002A Rev. 2009  
MAY 15 2019  
Oklahoma Corporation Commission  
640 Acres

☐ ORIGINAL  
☒ AMENDED (Reason)

**Add Additional PERFS / Correct**

TYPE OF DRILLING OPERATION

**Bottom Hole Location**

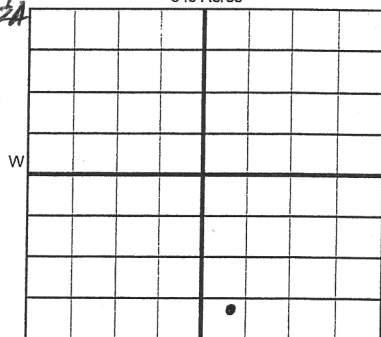
☐ STRAIGHT HOLE ☒ DIRECTIONAL HOLE ☐ HORIZONTAL HOLE  
SERVICE WELL

If directional or horizontal, see reverse for bottom hole location.

COUNTY **CARTER** SEC **4** TWP **55** RGE **1E**  
LEASE NAME **GERALD** WELL NO. **1**  
NE 1/4 SW 1/4 SW 1/4 SE 1/4 FSL **520** FWL OF 1/4 SEC **370**  
ELEVATION N Derrick Ground **831** Latitude (if known) Longitude (if known)  
OPERATOR NAME **GLB EXPLORATION, INC.** OTC/OCC OPERATOR N **18634-0**  
ADDRESS **7716 MELROSE LANE**  
CITY **OKLAHOMA CITY** STATE **OK** ZIP **73127**

SPUD DATE **3-7-2013**  
DRLG FINISHED DATE **3-13-2013**  
DATE OF WELL COMPLETION **6-14-2013**  
1st PROD DATE **6-5-2013**  
RECOMP DATE **5/1/19**

Per original 1002A



COMPLETION TYPE

☒ SINGLE ZONE  
☐ MULTIPLE ZONE  
Application Date  
COMINGLED  
Application Date  
LOCATION EXCEPTION ORDER **617985**  
INCREASED DENSITY ORDER NO.

CASING & CEMENT (Form 1002C must be attached)

TYPE	SIZE	WEIGHT	GRADE	FEET	PSI	SAX	TOP OF CMT
CONDUCTOR	16	42	J-55	37		375	Surface
SURFACE	8 5/8	24	J-55	462	500	350	11
INTERMEDIATE							
PRODUCTION	5 1/2	17	N-80	4605	1200	225	3250
LINER							
				TOTAL DEPTH	4630		

PACKER @ \_\_\_\_\_ BRAND & TYPE \_\_\_\_\_

PLUG @ **4254**

TYPE **Composite**

PLUG @ \_\_\_\_\_

TYPE \_\_\_\_\_

TOTAL DEPTH

PACKER @ \_\_\_\_\_ BRAND & TYPE \_\_\_\_\_

PLUG @ **4390**

TYPE **CFBP**

PLUG @ \_\_\_\_\_

TYPE \_\_\_\_\_

COMPLETION & TEST DATA BY PRODUCING FORMATION **404TSSX**

FORMATION	<b>TUSSY</b>								
SPACING & SPACING ORDER NUMBER	<b>40-607718</b>								
CLASS: Oil, Gas, Dry, Inj, Disp, Comm Disp, Svc	<b>OIL</b>								
PERFORATED INTERVALS	<b>4089-4101</b>								
ACID/VOLUME	<b>1000 gal diesel with 10% acetic acid + 10% XYLENE</b>								
FRACTURE TREATMENT (Fluids/Prop Amounts)	<b>890 bbls 4% X-LINK gelled KCL w/ 1/4 55,282# 20/40 SAND</b>								

**Reported to FracFocus**

Min Gas Allowable (165:10-17-7)

OR

Oil Allowable (165:10-13-3)

Gas Purchaser/Measurer

First Sales Date

INITIAL TEST DATA

INITIAL TEST DATE	<b>5/1/19</b>								
OIL-BBL/DAY	<b>76</b>								
OIL-GRAVITY (API)	<b>35</b>								
GAS-MCF/DAY	<b>78</b>								
GAS-OIL RATIO CU FT/BBL	<b>1,026:1</b>								
WATER-BBL/DAY	<b>0</b>								
PUMPING OR FLOWING	<b>PUMPING</b>								
INITIAL SHUT-IN PRESSURE	<b>400</b>								
CHOKE SIZE	<b>—</b>								
FLOW TUBING PRESSURE	<b>—</b>								

**AS SUBMITTED**

A record of the formations drilled through, and pertinent remarks are presented on the reverse. I declare that I have knowledge of the contents of this report and am authorized by my organization to make this report, which was prepared by me or under my supervision and direction, with the data and facts stated herein to be true, correct, and complete to the best of my knowledge and belief.

SIGNATURE **GLENN BLUMSTEIN** DATE **5/13/19** PHONE NUMBER **405-757-0049**  
ADDRESS **7716 MELROSE LANE** CITY **OKC** STATE **OK** ZIP **73127** EMAIL ADDRESS **glb@glbexplorationinc.com**

PLEASE TYPE OR USE BLACK INK ONLY  
FORMATION RECORD

Give formation names and tops, if available, or descriptions and thickness of formations drilled through. Show intervals cored or drillstem tested.

LEASE NAME GERALD

WELL NO. 1

NAMES OF FORMATIONS	TOP
<u>Tussy</u>	<u>3950</u>

FOR COMMISSION USE ONLY

ITD on file ☐ YES ☐ NO

APPROVED \_\_\_\_\_ DISAPPROVED \_\_\_\_\_

2) Reject Codes \_\_\_\_\_

Were open hole logs run? ☐ yes ☒ no

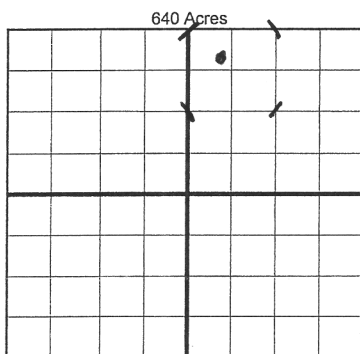
Date Last log was run \_\_\_\_\_

Was CO<sub>2</sub> encountered? ☐ yes ☒ no at what depths? \_\_\_\_\_

Was H<sub>2</sub>S encountered? ☐ yes ☒ no at what depths? \_\_\_\_\_

Were unusual drilling circumstances encountered? ☐ yes ☐ no  
If yes, briefly explain below \_\_\_\_\_

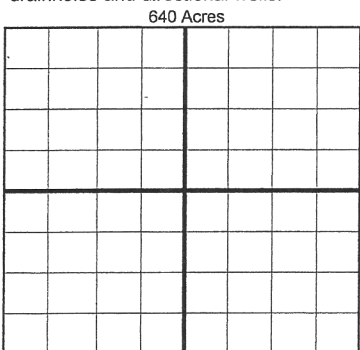
Other remarks:



If more than three drainholes are proposed, attach a separate sheet indicating the necessary information.

Direction must be stated in degrees azimuth. Please note, the horizontal drainhole and its end point must be located within the boundaries of the lease or spacing unit.

Directional surveys are required for all drainholes and directional wells.



BOTTOM HOLE LOCATION FOR DIRECTIONAL HOLE

SEC 9 TWP 5S RGE 1E COUNTY CARTER

Spot Location DE SE NW 1/4 NW 1/4 NE 1/4 Feet From 1/4 Sec Lines FNL 368 548

Measured Total Depth 4630 True Vertical Depth 4360 BHL From Lease, Unit, or Property Line: 432 368

*Corrected to Projected TD on Plat @*

*SAFELY*

BOTTOM HOLE LOCATION FOR HORIZONTAL HOLE: (LATERALS)

LATERAL #1

SEC \_\_\_\_\_ TWP \_\_\_\_\_ RGE \_\_\_\_\_ COUNTY \_\_\_\_\_

Spot Location \_\_\_\_\_ 1/4 \_\_\_\_\_ 1/4 \_\_\_\_\_ 1/4 \_\_\_\_\_ 1/4 Feet From 1/4 Sec Lines \_\_\_\_\_ FSL \_\_\_\_\_ FWL \_\_\_\_\_

Depth of Deviation \_\_\_\_\_ Radius of Turn \_\_\_\_\_ Direction \_\_\_\_\_ Total Length \_\_\_\_\_

Measured Total Depth \_\_\_\_\_ True Vertical Depth \_\_\_\_\_ BHL From Lease, Unit, or Property Line: \_\_\_\_\_

LATERAL #2

SEC \_\_\_\_\_ TWP \_\_\_\_\_ RGE \_\_\_\_\_ COUNTY \_\_\_\_\_

Spot Location \_\_\_\_\_ 1/4 \_\_\_\_\_ 1/4 \_\_\_\_\_ 1/4 \_\_\_\_\_ 1/4 Feet From 1/4 Sec Lines \_\_\_\_\_ FSL \_\_\_\_\_ FWL \_\_\_\_\_

Depth of Deviation \_\_\_\_\_ Radius of Turn \_\_\_\_\_ Direction \_\_\_\_\_ Total Length \_\_\_\_\_

Measured Total Depth \_\_\_\_\_ True Vertical Depth \_\_\_\_\_ BHL From Lease, Unit, or Property Line: \_\_\_\_\_

LATERAL #3

SEC \_\_\_\_\_ TWP \_\_\_\_\_ RGE \_\_\_\_\_ COUNTY \_\_\_\_\_

Spot Location \_\_\_\_\_ 1/4 \_\_\_\_\_ 1/4 \_\_\_\_\_ 1/4 \_\_\_\_\_ 1/4 Feet From 1/4 Sec Lines \_\_\_\_\_ FSL \_\_\_\_\_ FWL \_\_\_\_\_

Depth of Deviation \_\_\_\_\_ Radius of Turn \_\_\_\_\_ Direction \_\_\_\_\_ Total Length \_\_\_\_\_

Measured Total Depth \_\_\_\_\_ True Vertical Depth \_\_\_\_\_ BHL From Lease, Unit, or Property Line: \_\_\_\_\_