

Oklahoma Corporation Commission
Oil & Gas Conservation Division
Post Office Box 52000
Oklahoma City, Oklahoma 73152-2000
Rule 165: 10-3-25

Form 1002A

API No.: 35047012560005

Completion Report

Spud Date: October 22, 2008

OTC Prod. Unit No.:

Drilling Finished Date: November 05, 2008

Amended

1st Prod Date: December 01, 2008

Amend Reason: RECOMPLETION & COMMINGLE

Completion Date: November 26, 2008

Recomplete Date: September 26, 2019

Drill Type: STRAIGHT HOLE

Well Name: KISNER 54

Purchaser/Measurer:

Location: GARFIELD 19 22N 3W
NW NW NE NW
94 FNL 1420 FWL of 1/4 SEC
Derrick Elevation: 0 Ground Elevation: 1095

First Sales Date:

Operator: M M ENERGY INC 19118
PO BOX 21904
13927 Quail Pointe Drive
Oklahoma City, OK 73134

Completion Type		Location Exception		Increased Density	
	Single Zone		Order No		Order No
	Multiple Zone		558188		There are no Increased Density records to display.
X	Commingled				

Casing and Cement							
Type	Size	Weight	Grade	Feet	PSI	SAX	Top of CMT
SURFACE	9	36	J	110		100	SURFACE
PRODUCTION	5 1/2	14	J	2149		230	SURFACE

Liner								
Type	Size	Weight	Grade	Length	PSI	SAX	Top Depth	Bottom Depth
There are no Liner records to display.								

Total Depth: 2150

Packer	
Depth	Brand & Type
There are no Packer records to display.	

Plug	
Depth	Plug Type
There are no Plug records to display.	

Initial Test Data

Test Date	Formation	Oil BBL/Day	Oil-Gravity (API)	Gas MCF/Day	Gas-Oil Ratio Cu FT/BBL	Water BBL/Day	Pumpin or Flowing	Initial Shut-In Pressure	Choke Size	Flow Tubing Pressure
Dec 01, 2008	GARBER /PERMIAN/	5	40			100	PUMPING			
Sep 24, 2019	HOTSON	4	40			20	PUMPING			
Sep 25, 2019	HOY	2	40			20	PUMPING			

Completion and Test Data by Producing Formation

Formation Name: HOTSON

Code: 451HTSN

Class: OIL

Spacing Orders

Order No	Unit Size
NONE	

Perforated Intervals

From	To
1428	1448

Acid Volumes

2,000 GALLONS

Fracture Treatments

NONE

Formation Name: HOY

Code: 451HOY

Class: OIL

Spacing Orders

Order No	Unit Size
NONE	

Perforated Intervals

From	To
1064	1204

Acid Volumes

750 GALLONS

Fracture Treatments

NONE

Formation Name: GARBER /PERMIAN/

Code: 452GRBR

Class: OIL

Spacing Orders

Order No	Unit Size
NONE	

Perforated Intervals

From	To
1938	2115

Acid Volumes

2,000 GALLONS

Fracture Treatments

863 BARRELS, 53,400 POUNDS SAND, DECEMBER 2008
--

Formation	Top
HOY	1064
HOTSON	1428

Were open hole logs run? No

Date last log run: September 18, 2019

Were unusual drilling circumstances encountered? No

Explanation:

Other Remarks

ALL ZONES WILL BE PUMPED TOGETHER. FILED COMMINGLE APPLICATION WITH THIS 1002A.

FOR COMMISSION USE ONLY

1144463

Status: Accepted

API NO. 047-01256
OTC PROD.
UNIT NO.

(PLEASE TYPE OR USE BLACK INK ONLY)

OKLAHOMA CORPORATION COMMISSION
Oil & Gas Conservation Division
Post Office Box 52000
Oklahoma City, Oklahoma 73152-2000
Rule 165:10-3-25

RECEIVED

Form 1002A
Rev. 2009

DEC 20 2019

ORIGINAL
☒ AMENDED (Reason) re-completion

COMPLETION REPORT

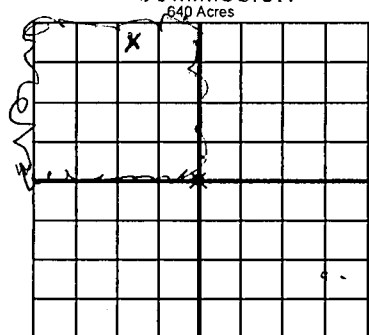
TYPE OF DRILLING OPERATION

☒ STRAIGHT HOLE ☐ DIRECTIONAL HOLE ☐ HORIZONTAL HOLE
☐ SERVICE WELL

If directional or horizontal, see reverse for bottom hole location.

COUNTY	Garfield	SEC	19	TWP	22n	RGE	3w	SPUD DATE	10/22/2008
LEASE NAME	Kisner	WELL NO.	54	DRLG FINISHED DATE	11/05/2008				
NW 1/4 NW 1/4 NE 1/4 NW 1/4	EST. OF 2546 94	FWL OF 1420	DATE OF WELL COMPLETION	11/26/2008					
ELEVATION Derrick FL	Ground 1095	Latitude (if known)	Longitude (if known)	1st PROD DATE	12/1/2008				
OPERATOR NAME	MM Energy	OTC / OCC OPERATOR NO.	19118	RECOMP DATE	9-26-2019				
ADDRESS	P O Box 21904								
CITY	Oklahoma City	STATE		ZIP	73156				

OKLAHOMA CORPORATION COMMISSION



COMPLETION TYPE

<input type="checkbox"/> SINGLE ZONE	
<input type="checkbox"/> MULTIPLE ZONE	
Application Date	
<input checked="" type="checkbox"/> COMMINGLED	12/12/19
Application Date	
LOCATION EXCEPTION ORDER NO.	558188
INCREASED DENSITY ORDER NO.	

CASING & CEMENT (Attach Form 1002C)

TYPE	SIZE	WEIGHT	GRADE	FEET	PSI	SAX	TOP OF CMT
CONDUCTOR							
SURFACE	9	36	J	110		100	surface
INTERMEDIATE							
PRODUCTION	5 1/2	14	J	2149		230	SURFACE
LINER							
							TOTAL DEPTH 2,150

PACKER @ BRAND & TYPE

PLUG @ TYPE

PLUG @ TYPE

TOTAL DEPTH 2,150

PACKER @ BRAND & TYPE

PLUG @ TYPE

PLUG @ TYPE

COMPLETION & TEST DATA BY PRODUCING FORMATION

FORMATION	Hotson	Hoy	Garber				No New Frac
SPACING & SPACING ORDER NUMBER	none	none	none				
CLASS: Oil, Gas, Dry, Inj, Disp, Comm Disp, Svc	Oil	Oil	Oil				
PERFORATED INTERVALS	1428-1448	1064-1072	1938-1948				
		1196-1204	2105-2115				
ACID/VOLUME	2000 gallon	750 gallon	2000 gallon				
FRACTURE TREATMENT (Fluids/Prop Amounts)	none	none	863 bl 53,400 lb sand				
			Dec-08				

Min Gas Allowable (165:10-17-7)

Gas Purchaser/Measurer

☐

OR

First Sales Date

INITIAL TEST DATA

Oil Allowable (165:10-13-3)

INITIAL TEST DATE	9/24/2019	9/25/2019	12/1/2008			
OIL-BBL/DAY	4	2	5			
OIL-GRAVITY (API)	40	40	40			
GAS-MCF/DAY	0	0	0			
GAS-OIL RATIO CU FT/BBL						
WATER-BBL/DAY	20	20	100			
PUMPING OR FLOWING	pumping	pumping	pumping			
INITIAL SHUT-IN PRESSURE						
CHOKE SIZE						
FLOW TUBING PRESSURE						

A record of the formations drilled through, and pertinent remarks are presented on the reverse. I declare that I have knowledge of the contents of this report and am authorized by my organization to make this report, which was prepared by me or under my supervision and direction, with the data and facts stated herein to be true, correct, and complete to the best of my knowledge and belief.

<i>mike murphy</i> SIGNATURE	mike murphy NAME (PRINT OR TYPE)	12/11/2019 DATE	405 463 3355 PHONE NUMBER
P O Box 2104 ADDRESS	Oklahoma City OK 73156 CITY STATE ZIP	mike@mmenergy.net EMAIL ADDRESS	

PLEASE TYPE OR USE BLACK INK ONLY
FORMATION RECORD

Give formation names and tops, if available, or descriptions and thickness of formations drilled through. Show intervals cored or drillstem tested.

LEASE NAME Kisner WELL NO. 54

NAMES OF FORMATIONS	TOP
Hotson	1,428
Hoy	1064

FOR COMMISSION USE ONLY

ITD on file ☐ YES ☐ NO

APPROVED _____ DISAPPROVED _____

2) Reject Codes _____

Were open hole logs run? ____ yes X no

Date Last log was run 9/18/2019 BOND LOG

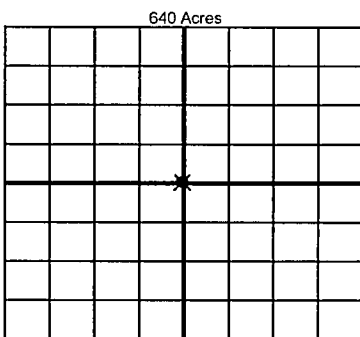
Was CO₂ encountered? ____ yes X no at what depths? _____

Was H₂S encountered? ____ yes X no at what depths? _____

Were unusual drilling circumstances encountered? ____ yes X no

If yes, briefly explain below

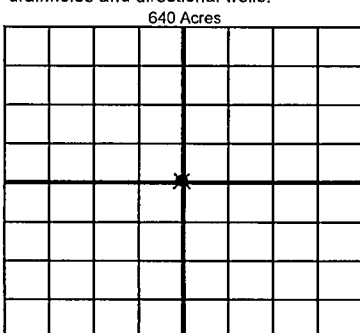
Other remarks: all zones will be pumped together filed comingle application with this 1002A



If more than three drainholes are proposed, attach a separate sheet indicating the necessary information.

Direction must be stated in degrees azimuth. Please note, the horizontal drainhole and its end point must be located within the boundaries of the lease or spacing unit.

Directional surveys are required for all drainholes and directional wells.



BOTTOM HOLE LOCATION FOR DIRECTIONAL HOLE

SEC	TWP	RGE	COUNTY
Spot Location		Feet From 1/4 Sec Lines	
1/4	1/4	1/4	1/4
Measured Total Depth		True Vertical Depth	
		BHL From Lease, Unit, or Property Line:	

BOTTOM HOLE LOCATION FOR HORIZONTAL HOLE: (LATERALS)

LATERAL #1

SEC	TWP	RGE	COUNTY
Spot Location		Feet From 1/4 Sec Lines	
1/4	1/4	1/4	1/4
Depth of Deviation		Radius of Turn	
		Direction	
Measured Total Depth		True Vertical Depth	
		BHL From Lease, Unit, or Property Line:	

LATERAL #2

SEC	TWP	RGE	COUNTY
Spot Location		Feet From 1/4 Sec Lines	
1/4	1/4	1/4	1/4
Depth of Deviation		Radius of Turn	
		Direction	
Measured Total Depth		True Vertical Depth	
		BHL From Lease, Unit, or Property Line:	

LATERAL #3

SEC	TWP	RGE	COUNTY
Spot Location		Feet From 1/4 Sec Lines	
1/4	1/4	1/4	1/4
Depth of Deviation		Radius of Turn	
		Direction	
Measured Total Depth		True Vertical Depth	
		BHL From Lease, Unit, or Property Line:	