

Oklahoma Corporation Commission
Oil & Gas Conservation Division
Post Office Box 52000
Oklahoma City, Oklahoma 73152-2000
Rule 165: 10-3-25

Form 1002A

API No.: 35073262880001

Completion Report

Spud Date: October 25, 2018

OTC Prod. Unit No.: N/A

Drilling Finished Date: November 03, 2018

1st Prod Date:

Completion Date: November 10, 2018

Amended

Amend Reason: RECLASSIFYING AS DRY

Drill Type: HORIZONTAL HOLE

Well Name: WILLIAMS 9-17-5 1H

Purchaser/Measurer:

Location: KINGFISHER 9 17N 5W
NE NW NE NE
210 FNL 700 FEL of 1/4 SEC
Derrick Elevation: 1112 Ground Elevation: 1085

First Sales Date:

Operator: CHESAPEAKE OPERATING LLC 17441
PO BOX 18496
6100 N WESTERN AVE
OKLAHOMA CITY, OK 73154-0496

Completion Type		Location Exception		Increased Density	
X	Single Zone	Order No		Order No	
	Multiple Zone	N/A		N/A	
	Commingled				

Casing and Cement								
Type		Size	Weight	Grade	Feet	PSI	SAX	Top of CMT
SURFACE		9 5/8	36	J-55	1479		595	SURFACE
PRODUCTION		7	26	P-110EC	6798		465	932

Liner								
Type	Size	Weight	Grade	Length	PSI	SAX	Top Depth	Bottom Depth
LINER	4 1/2	13.50	P-110EC	5371	0	470	6472	11843

Total Depth: 11865

Packer		Plug	
Depth	Brand & Type	Depth	Plug Type
There are no Packer records to display.		There are no Plug records to display.	

Initial Test Data										
Test Date	Formation	Oil BBL/Day	Oil-Gravity (API)	Gas MCF/Day	Gas-Oil Ratio Cu FT/BBL	Water BBL/Day	Pumpin or Flowing	Initial Shut-In Pressure	Choke Size	Flow Tubing Pressure
Jun 22, 2019	OSWEGO									

Completion and Test Data by Producing Formation			
Formation Name: OSWEGO		Code: 404OSWG	Class: DRY
Spacing Orders		Perforated Intervals	
Order No	Unit Size	From	To
670927	240 IRREGULAR UNIT	6737	11768
Acid Volumes		Fracture Treatments	
300,324 GALLONS ACID		48,883 BARRELS FLUIDS, 150 POUNDS PROPPANT	

Formation	Top
OSWEGO	6639

Were open hole logs run? No
Date last log run:

Were unusual drilling circumstances encountered? No
Explanation:

Other Remarks
There are no Other Remarks.

Lateral Holes
Sec: 9 TWP: 17N RGE: 5W County: KINGFISHER SE SW SW SE 262 FSL 2174 FEL of 1/4 SEC Depth of Deviation: 5481 Radius of Turn: 806 Direction: 209 Total Length: 5226 Measured Total Depth: 11865 True Vertical Depth: 6287 End Pt. Location From Release, Unit or Property Line: 262

FOR COMMISSION USE ONLY	
Status: Accepted	1143896

API NO. 073-26288
OTC PROD.
UNIT NO. N/A

PLEASE TYPE OR USE BLACK INK ONLY

NOTE:

Attach copy of original 1002A if recompletion or reentry.

OKLAHOMA CORPORATION COMMISSION

Oil & Gas Conservation Division

Post Office Box 52000

Oklahoma City, Oklahoma 73152-2000

Rule 165:10-3-25

RECEIVED
JUN 26 2019

Form 1002A
Rev. 2009

OKLAHOMA CORPORATION
COMMISSION

☒ ORIGINAL
☐ AMENDED

Reason Amended Reclassifying as dry

TYPE OF DRILLING OPERATION

☐ STRAIGHT HOLE ☐ DIRECTIONAL HOLE ☒ HORIZONTAL HOLE
☐ SERVICE WELL

If directional or horizontal, see reverse for bottom hole location.

COUNTY Kingfisher SEC 9 TWP 17N RGE 5W

LEASE NAME Williams 9-17-5 WELL NO. 1H

SHL NE 1/4 NW 1/4 NE 1/4 NE 1/4 210 1/4 SEC 700

ELEVATION Derrick Fl 1,112 Ground 1,085 Latitude (if Known)

OPERATOR NAME CHESAPEAKE OPERATING, L.L.C.

OTC/OCC OPERATOR NO. 17441

ADDRESS P.O. BOX 18496

CITY OKLAHOMA CITY

STATE OK

ZIP 73154

COMPLETION REPORT

SPUD DATE 10/25/2018

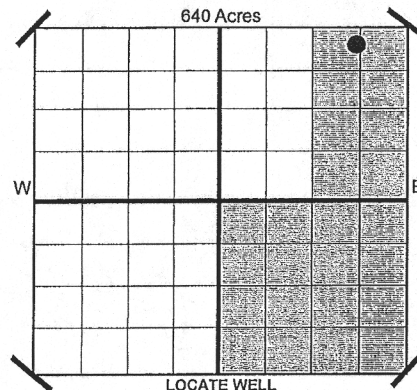
DRLG FINISHED DATE 11/3/2018

DATE OF WELL COMPLETION 11/10/2018

1ST PROD DATE

RECOMP DATE

Longitude
(if Known)



COMPLETION TYPE

☒ SINGLE ZONE

☐ MULTIPLE ZONE

Application Date

☐ COMMINGLED

Application Date

LOCATION EXCEPTION ORDER NO. N/A

INCREASED DENSITY ORDER NO. N/A

CASING & CEMENT (Form 1002C must be attached)

TYPE	SIZE	WEIGHT	GRADE	FEET	PSI	SAX	TOP
CONDUCTOR							
SURFACE	9-5/8"	36#	J-55	1,479		595	Surface
INTERMEDIATE							
PRODUCTION	7"	26#	P-110EC	6,798		465	932
LINER	4-1/2"	13.50#	P-110EC	6,472-11,843		470	6,473
TOTAL DEPTH							11,865

PACKER @ BRAND & TYPE

PLUG @ TYPE

PLUG @ TYPE

TOTAL DEPTH

COMPLETION & TEST DATA BY PRODUCING FORMATION

40405WG

FORMATION	Oswego				
SPACING & SPACING ORDER NUMBER	240 irregular unit 670927				
CLASS: Oil, Gas, Dry, Inj. Disp, Comm Disp, Svc	Dry				
PERFORATED INTERVALS	6,737 - 11,768				
ACID/VOLUME	300,324 gals acid 48,883 bbls fluids 150# proppant				
FRACTURE TREATMENT (Fluids/Prop Amounts)					

Minimum Gas Allowable

(165:10-17-7)

Gas Purchaser/Measurer

OR

1st Sales Date

INITIAL TEST DATA

Oil Allowable

(165:10-13-3)

INITIAL TEST DATE	6/22/2019				
OIL-BBL/DAY	0				
OIL-GRAVITY (API)					
GAS-MCF/DAY	0				
GAS-OIL RATIO CU FT/BBL					
WATER-BBL/DAY	0				
PUMPING OR FLOWING					
INITIAL SHUT-IN PRESSURE					
CHOKE SIZE					
FLOW TUBING PRESSURE					

AS SUBMITTED

A record of the formations drilled through, and pertinent remarks are presented on the reverse. I declare that I have knowledge of the contents of this report and am authorized by my organization to make this report, which was prepared by me or under my supervision and direction, with the data and facts stated herein to be true, correct, and complete to the best of my knowledge and belief.

Juanita Cooper

JUANITA COOPER - REGULATORY SPECIALIST

6/25/2019

405-848-8000

P.O. BOX 18496

OKLAHOMA CITY

OK 73154

juanita.cooper@chk.com

ADDRESS

CITY

STATE

ZIP

DATE

PHONE NUMBER

EMAIL ADDRESS

PLEASE TYPE OR USE BLACK INK ONLY
FORMATION RECORD

Give formation names and tops, if available, or descriptions and thickness of formations drilled through. Show intervals cored or drillstem tested.

LEASE NAME Williams 9-17-5

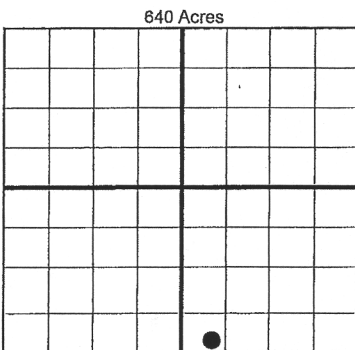
WELL NO. 1H

NAMES OF FORMATIONS	TOP
Oswego	6,639

FOR COMMISSION USE ONLY	
ITD on file <input type="checkbox"/> YES <input type="checkbox"/> NO	
APPROVED _____	DISAPPROVED _____
2) Reject Codes	

Were open hole logs run?	yes	<input checked="" type="checkbox"/> X	no
Date Last log was run	N/A		
Was CO ₂ encountered?	yes	<input checked="" type="checkbox"/> X	no at what depths?
Was H ₂ S encountered?	yes	<input checked="" type="checkbox"/> X	no at what depths?
Were unusual drilling circumstances encountered?	yes	<input checked="" type="checkbox"/> X	no
If yes, briefly explain.			

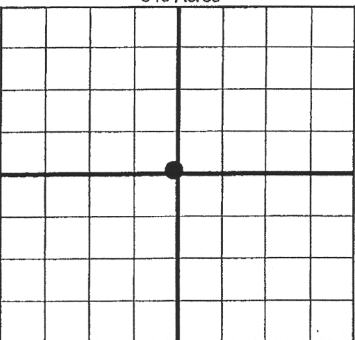
Other remarks:



If more than three drainholes are proposed, attach a separate sheet indicating the necessary information.

Direction must be stated in degrees azimuth. Please note, the horizontal drainhole and its end point must be located within the boundaries of the lease or spacing unit.

Directional surveys are required for all drainholes and directional wells.
640 Acres



BOTTOM HOLE LOCATION FOR DIRECTIONAL HOLE

SEC	TWP	RGE	COUNTY
Spot Location	1/4	1/4	1/4
Measured Total Depth	True Vertical Depth	BHL From Lease, Unit, or Property Line:	

BOTTOM HOLE LOCATION FOR HORIZONTAL HOLE: (LATERALS)

SEC	TWP	RGE	COUNTY
9	17N	5W	Kingfisher
Spot Location	SE 1/4	SW 1/4	SE 1/4
Depth of Deviation	5,481	Radius of Turn	806
Measured Total Depth	11,865	True Vertical Depth	6,287
Feet From 1/4 Sec Lines		FSL	262
Direction		209	Total Length
BHL From Lease, Unit, or Property Line:		5,226	

LATERAL #2

SEC	TWP	RGE	COUNTY
Spot Location	1/4	1/4	1/4
Depth of Deviation	Radius of Turn	Direction	Total Length
Measured Total Depth	True Vertical Depth	BHL From Lease, Unit, or Property Line:	

LATERAL #3

SEC	TWP	RGE	COUNTY
Spot Location	1/4	1/4	1/4
Depth of Deviation	Radius of Turn	Direction	Total Length
Measured Total Depth	True Vertical Depth	BHL From Lease, Unit, or Property Line:	