

Oklahoma Corporation Commission  
Oil & Gas Conservation Division  
Post Office Box 52000  
Oklahoma City, Oklahoma 73152-2000  
Rule 165: 10-3-25

Form 1002A

API No.: 35019263150000

**Completion Report**

Spud Date: February 10, 2019

OTC Prod. Unit No.:

Drilling Finished Date: February 13, 2019

1st Prod Date:

Completion Date: February 13, 2019

**Drill Type: STRAIGHT HOLE**

Well Name: NAYLOR 3-11H2X35

Purchaser/Measurer:

Location: CARTER 11 4S 2E  
SE NW NW NE  
559 FNL 2300 FEL of 1/4 SEC  
Latitude: 34.229156 Longitude: -97.06306  
Derrick Elevation: 0 Ground Elevation: 777

First Sales Date:

Operator: XTO ENERGY INC 21003

22777 SPRINGWOODS VILLAGE PKWY  
SPRING, TX 77389-1425

Completion Type		Location Exception		Increased Density	
	Single Zone	Order No		Order No	
	Multiple Zone	There are no Location Exception records to display.		There are no Increased Density records to display.	
	Commingled				

Casing and Cement							
Type	Size	Weight	Grade	Feet	PSI	SAX	Top of CMT
CONDUCTOR	20	169	J-55	105			SURFACE
SURFACE	13 3/8	54.50	J-55	1992		855	SURFACE

Liner								
Type	Size	Weight	Grade	Length	PSI	SAX	Top Depth	Bottom Depth
There are no Liner records to display.								

**Total Depth: 1992**

Packer		Plug	
Depth	Brand & Type	Depth	Plug Type
There are no Packer records to display.		There are no Plug records to display.	

Initial Test Data										
Test Date	Formation	Oil BBL/Day	Oil-Gravity (API)	Gas MCF/Day	Gas-Oil Ratio Cu FT/BBL	Water BBL/Day	Pumpin or Flowing	Initial Shut-In Pressure	Choke Size	Flow Tubing Pressure
There are no Initial Data records to display.										

**Completion and Test Data by Producing Formation**

Formation Name: NONE

Code:

Class: TA

**Formation****Top**

Were open hole logs run? No

Date last log run:

Were unusual drilling circumstances encountered? No

Explanation:

**Other Remarks**

XTO ENERGY INC ASKING FOR EXEMPTION FROM PLUGGING ORDER 703638 AS PER THE OCC'S REQUIREMENTS. ORDER WILL EXPIRE FROM DATE OF HEARING 9/16/2019 IN 12 MONTHS.

**FOR COMMISSION USE ONLY**

1143886

Status: Accepted

API NO. 019-26315  
OTC PROD.  
UNIT NO.

(PLEASE TYPE OR USE BLACK INK ONLY)

OKLAHOMA CORPORATION COMMISSION  
Oil & Gas Conservation Division  
Post Office Box 52000  
Oklahoma City, Oklahoma 73152-2000  
Rule 165:10-3-25

RECEIVED  
SEP 16 2019  
OKLAHOMA CORPORATION COMMISSION

Form 1002A  
Rev. 2009

☒ ORIGINAL  
☐ AMENDED (Reason)

TYPE OF DRILLING OPERATION

☒ STRAIGHT HOLE ☐ DIRECTIONAL HOLE ☐ HORIZONTAL HOLE  
☐ SERVICE WELL

If directional or horizontal, see reverse for bottom hole location.

COUNTY Carter SEC 11 TWP 4S RGE 2E

LEASE NAME Naylor 3-11H2X35

SE 1/4 NW 1/4 NW 1/4 NE 1/4 FNL OF 559 FEL OF 2300

ELEVATION Ground 777' Latitude (if known) 34.229156

OPERATOR NAME XTO Energy Inc. OTC / OCC OPERATOR NO. 21003

ADDRESS 210 Park Avenue, Suite 2350

CITY Oklahoma City STATE Oklahoma ZIP 73102

SPUD DATE 2/10/2019

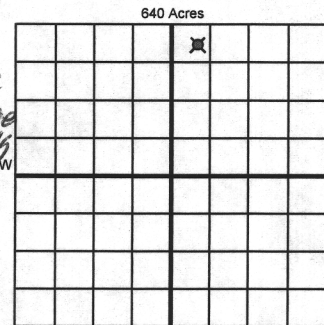
DRLG FINISHED DATE 2-13-2019

DATE OF WELL COMPLETION 2-13-2019

1st PROD DATE

RECOMP DATE

Longitude (if known) - 97.06306



LOCATE WELL

COMPLETION TYPE

SINGLE ZONE	
MULTIPLE ZONE	
Application Date	
COMINGLED	
Application Date	
LOCATION EXCEPTION ORDER NO.	
INCREASED DENSITY ORDER NO.	

CASING & CEMENT (Attach Form 1002C)

TYPE	SIZE	WEIGHT	GRADE	FEET	PSI	SAX	TOP OF CMT
CONDUCTOR	20"	169	J-55	105			Surface
SURFACE	13 3/8"	54.50	J-55	1992		855	Surface
INTERMEDIATE							
PRODUCTION							
LINER							

PACKER @ BRAND & TYPE PLUG @ TYPE PLUG @ TYPE  
PACKER @ BRAND & TYPE PLUG @ TYPE PLUG @ TYPE

TOTAL DEPTH 1992

COMPLETION & TEST DATA BY PRODUCING FORMATION

FORMATION	See Remarks					
SPACING & SPACING ORDER NUMBER						
CLASS: Oil, Gas, Dry, Inj, Disp, Comm Disp, Svc	TA					
PERFORATED INTERVALS						
ACID/VOLUME						
FRACTURE TREATMENT (Fluids/Prop Amounts)						

☐ Min Gas Allowable (165:10-17-7)  
OR  
☐ Oil Allowable (165:10-13-3)

Gas Purchaser/Measurer  
First Sales Date

INITIAL TEST DATA

INITIAL TEST DATE						
OIL-BBL/DAY						
OIL-GRAVITY ( API)						
GAS-MCF/DAY						
GAS-OIL RATIO CU FT/BBL						
WATER-BBL/DAY						
PUMPING OR FLOWING						
INITIAL SHUT-IN PRESSURE						
CHOKE SIZE						
FLOW TUBING PRESSURE						

AS SUBMITTED

A record of the formations drilled through, and pertinent remarks are presented on the reverse. I declare that I have knowledge of the contents of this report and am authorized by my organization to make this report, which was prepared by me or under my supervision and direction, with the data and facts stated herein to be true, correct, and complete to the best of my knowledge and belief.

Signature: Debbie Waggoner  
NAME (PRINT OR TYPE): Debbie Waggoner  
DATE: 9/13/2019  
PHONE NUMBER: 405-319-3243  
ADDRESS: 210 Park Avenue, Suite 2350  
CITY: Oklahoma City  
STATE: Ok  
ZIP: 73102  
EMAIL ADDRESS: debbie\_waggoner@xtoenergy.com

Give formation names and tops, if available, or descriptions and thickness of formations drilled through. Show intervals cored or drillstem tested.

WELL NO. 3-11H2X35

Were open hole logs run? ☐ yes ☐ no

Date Last log was run \_\_\_\_\_

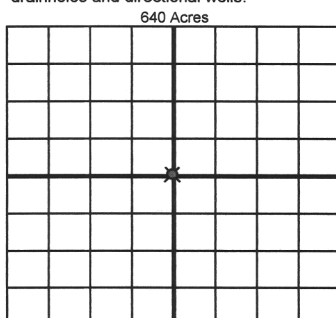
Was CO<sub>2</sub> encountered? ☐ yes ☐ no at what depths? \_\_\_\_\_

Was H<sub>2</sub>S encountered? ☐ yes ☐ no at what depths? \_\_\_\_\_

Were unusual drilling circumstances encountered? ☐ yes ☐ no

If yes, briefly explain below.

703638



SEC	TWP	RGE	COUNTY			
Spot Location			Feet From 1/4 Sec Lines		FSL	FWL
1/4	1/4	1/4	1/4			
Measured Total Depth		True Vertical Depth		BHL From Lease, Unit, or Property Line:		

LATERAL #1						
SEC	TWP	RGE	COUNTY			
Spot Location			Feet From 1/4 Sec Lines		FSL	FWL
1/4 1/4 1/4						
Depth of Deviation		Radius of Turn	Direction		Total Length	
Measured Total Depth		True Vertical Depth	BHL From Lease, Unit, or Property Line:			

LATERAL #2							
SEC	TWP	RGE	COUNTY				
Spot Location					Feet From 1/4 Sec Lines	FSL	FWL
1/4	1/4	1/4	1/4				
Depth of Deviation		Radius of Turn		Direction		Total Length	
Measured Total Depth		True Vertical Depth		BHL From Lease, Unit, or Property Line:			

LATERAL #3						
SEC	TWP	RGE	COUNTY			
Spot Location						
1/4	1/4	1/4	1/4	Feet From 1/4 Sec Lines	FSL	FWL
Depth of Deviation		Radius of Turn	Direction		Total Length	
Measured Total Depth		True Vertical Depth	BHL From Lease, Unit, or Property Line:			