

Oklahoma Corporation Commission
Oil & Gas Conservation Division
Post Office Box 52000
Oklahoma City, Oklahoma 73152-2000
Rule 165: 10-3-25

Form 1002A

API No.: 35131244400001

Completion Report

Spud Date: July 20, 1989

OTC Prod. Unit No.:

Drilling Finished Date: July 20, 1989

Amended

1st Prod Date: August 10, 1989

Amend Reason: RECOMPLETE

Completion Date: August 15, 1989

Recomplete Date: January 15, 2019

Drill Type: STRAIGHT HOLE

Well Name: PHILLIPS P-5

Purchaser/Measurer:

Location: ROGERS 3 24N 17E
E2 E2 E2 SE
1320 FSL 2475 FWL of 1/4 SEC
Derrick Elevation: 708 Ground Elevation: 708

First Sales Date:

Operator: WESTEND OPERATING LLC 23593

17303 S 4190 RD
CLAREMORE, OK 74017-2837

Completion Type		Location Exception		Increased Density	
X	Single Zone	Order No		Order No	
	Multiple Zone	There are no Location Exception records to display.		There are no Increased Density records to display.	
	Commingled				

Casing and Cement							
Type	Size	Weight	Grade	Feet	PSI	SAX	Top of CMT
CONDUCTOR	7	13	J-55	50			SURFACE
PRODUCTION	4 1/2	9.5	J-55	462		80	SURFACE

Liner								
Type	Size	Weight	Grade	Length	PSI	SAX	Top Depth	Bottom Depth
There are no Liner records to display.								

Total Depth: 464

Packer		Plug	
Depth	Brand & Type	Depth	Plug Type
There are no Packer records to display.		There are no Plug records to display.	

Initial Test Data										
Test Date	Formation	Oil BBL/Day	Oil-Gravity (API)	Gas MCF/Day	Gas-Oil Ratio Cu FT/BBL	Water BBL/Day	Pumpin or Flowing	Initial Shut-In Pressure	Choke Size	Flow Tubing Pressure
Jan 17, 2019	BARTLESVILLE	1	35			8	PUMPING			

Completion and Test Data by Producing Formation			
Formation Name: BARTLESVILLE		Code: 404BRVL	Class: OIL
Spacing Orders		Perforated Intervals	
Order No	Unit Size	From	To
N/A		368	378
		418	444
Acid Volumes		Fracture Treatments	
300 GALLONS		5,000 POUNDS SAND	

Formation	Top
BARTLESVILLE	368

Were open hole logs run? No
Date last log run: December 17, 2018

Were unusual drilling circumstances encountered? No
Explanation:

Other Remarks
BARTLESVILLE 368' - 378' EXISTING ZONE AUGUST 15, 1989. BARTLESVILLE 418' - 444' NEW ZONE JANUARY 15, 2019. SINGLE ZONE WITH PERFORATIONS AT MULTIPLE INTERVALS.

FOR COMMISSION USE ONLY	
Status: Accepted	1141908

API NO. 131-24440
OTC PROD. 14934
UNIT NO. 14934

(PLEASE TYPE OR USE BLACK INK ONLY)

OKLAHOMA CORPORATION COMMISSION

Oil & Gas Conservation Division

Post Office Box 52000

Oklahoma City, Oklahoma 73152-2000

Rule 165:10-3-25

RECEIVED

Form 1002A

Rev. 2009

AUG 12 2019

ORIGINAL
AMENDED (Reason)

BE-Complete

TYPE OF DRILLING OPERATION

STRAIGHT HOLE ☐ DIRECTIONAL HOLE ☐ HORIZONTAL HOLE ☐
SERVICE WELL ☐

If directional or horizontal, see reverse for bottom hole location.

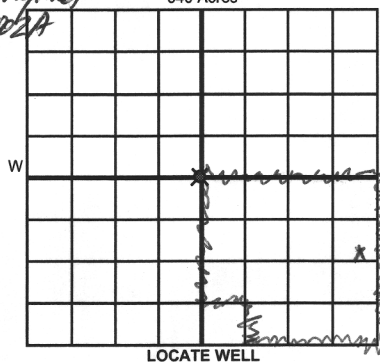
COUNTY	Logans	SEC	3	TWP	24N	RGE	17E
LEASE NAME	Phillips	WELL NO.	P5	DATE OF WELL COMPLETION	08-15-89	1st PROD DATE	8-10-89
E2 1/4 E2 1/4 E2 1/4 SE 1/4	FSL OF 1/4 SEC 1320	FWL OF 1/4 SEC 2475	RECOMP DATE	01-15-19	Longitude (if known)		
ELEVATION Derrick FL 708	Ground 708	Latitude (if known)					
OPERATOR NAME	Westerd Operating LLC	OTC / OCC OPERATOR NO.	23593				
ADDRESS	17308 S. 4190 Rd						
CITY	Claremore	STATE	OK	ZIP	74017		

COMPLETION REPORT

SPUD DATE	7-20-89
DRLG FINISHED DATE	7-20-89
DATE OF WELL COMPLETION	08-15-89
1st PROD DATE	8-10-89
RECOMP DATE	01-15-19
Longitude (if known)	

Per original 1002A

OKLAHOMA CORPORATION COMMISSION



COMPLETION TYPE

SINGLE ZONE	07-21-18
MULTIPLE ZONE	
Application Date	
COMINGLED	
Application Date	
LOCATION EXCEPTION ORDER NO.	
INCREASED DENSITY ORDER NO.	

CASING & CEMENT (Attach Form 1002C)

TYPE	SIZE	WEIGHT	GRADE	FEET	PSI	SAX	TOP OF CMT
CONDUCTOR	7	13	J55	50			surface
SURFACE							
INTERMEDIATE							
PRODUCTION	4 1/2	9 1/2	J55	462		80	surface
LINER							

Per original 1002A

PACKER @ _____ BRAND & TYPE _____ PLUG @ _____ TYPE _____ PLUG @ _____ TYPE _____
PACKER @ _____ BRAND & TYPE _____ PLUG @ _____ TYPE _____ PLUG @ _____ TYPE _____

TOTAL DEPTH 464'

COMPLETION & TEST DATA BY PRODUCING FORMATION

FORMATION	Bartlesville						
SPACING & SPACING ORDER NUMBER	NA						
CLASS: Oil, Gas, Dry, Inj, Disp, Comm Disp, Svc	oil						
PERFORATED INTERVALS	368'-378'						
	418'-444'						
ACID/VOLUME	300 gal						
FRACTURE TREATMENT (Fluids/Prop Amounts)	5000 lbs.						

Min Gas Allowable (165:10-17-7)

Gas Purchaser/Measurer



OR

First Sales Date

INITIAL TEST DATA

Oil Allowable (165:10-13-3)

INITIAL TEST DATE	01-17-19						
OIL-BBL/DAY	1 BBL/day						
OIL-GRAVITY (API)	35						
GAS-MCF/DAY							
GAS-OIL RATIO CU FT/BBL							
WATER-BBL/DAY	8 BBL/day						
PUMPING OR FLOWING	pumping						
INITIAL SHUT-IN PRESSURE	none						
CHOKE SIZE	none						
FLOW TUBING PRESSURE	none						

AS SUBMITTED

A record of the formations drilled through, and pertinent remarks are presented on the reverse. I declare that I have knowledge of the contents of this report and am authorized by my organization to make this report, which was prepared by me or under my supervision and direction, with the data and facts stated herein to be true, correct, and complete to the best of my knowledge and belief.

SIGNATURE: [Signature] NAME (PRINT OR TYPE): Garbe van Westende DATE: 08-06-19 PHONE NUMBER: 214-728-0216
ADDRESS: 17308 S. 4190 Rd CITY: Claremore STATE: OK ZIP: 74017 EMAIL ADDRESS: westerdtrading1@sbclglobal.net

PLEASE TYPE OR USE BLACK INK ONLY

FORMATION RECORD

Give formation names and tops, if available, or descriptions and thickness of formations drilled through. Show intervals cored or drillstem tested.

NAMES OF FORMATIONS	TOP
Bartlesville	368'

LEASE NAME Phillips WELL NO. P5

FOR COMMISSION USE ONLY

ITD on file ☐ YES ☐ NO

APPROVED _____ DISAPPROVED _____

2) Reject Codes _____

Were open hole logs run? _____ yes ☒ no

Date Last log was run 10-17-18 Gamma Ray Neutron Cement Bond

Was CO₂ encountered? _____ yes ☒ no at what depths? _____

Was H₂S encountered? _____ yes ☒ no at what depths? _____

Were unusual drilling circumstances encountered? _____ yes ☒ no

If yes, briefly explain below _____

Other remarks:

Single zone with perforations at multiple intervals

640 Acres

If more than three drainholes are proposed, attach a separate sheet indicating the necessary information.

Direction must be stated in degrees azimuth. Please note, the horizontal drainhole and its end point must be located within the boundaries of the lease or spacing unit.

Directional surveys are required for all drainholes and directional wells.

640 Acres

BOTTOM HOLE LOCATION FOR DIRECTIONAL HOLE

SEC	TWP	RGE	COUNTY
Spot Location			
1/4	1/4	1/4	1/4
Measured Total Depth		True Vertical Depth	Feet From 1/4 Sec Lines FSL FWL
BHL From Lease, Unit, or Property Line:			

BOTTOM HOLE LOCATION FOR HORIZONTAL HOLE: (LATERALS)

LATERAL #1

SEC	TWP	RGE	COUNTY
Spot Location			
1/4	1/4	1/4	1/4
Depth of Deviation		Radius of Turn	Direction
Measured Total Depth		True Vertical Depth	Total Length
BHL From Lease, Unit, or Property Line:			

LATERAL #2

SEC	TWP	RGE	COUNTY
Spot Location			
1/4	1/4	1/4	1/4
Depth of Deviation		Radius of Turn	Direction
Measured Total Depth		True Vertical Depth	Total Length
BHL From Lease, Unit, or Property Line:			

LATERAL #3

SEC	TWP	RGE	COUNTY
Spot Location			
1/4	1/4	1/4	1/4
Depth of Deviation		Radius of Turn	Direction
Measured Total Depth		True Vertical Depth	Total Length
BHL From Lease, Unit, or Property Line:			