

Oklahoma Corporation Commission
Oil & Gas Conservation Division
Post Office Box 52000
Oklahoma City, Oklahoma 73152-2000
Rule 165: 10-3-25

Form 1002A

API No.: 35087356040001

Completion Report

Spud Date: June 01, 1956

OTC Prod. Unit No.: 087-18950

Drilling Finished Date: August 19, 1956

Amended

1st Prod Date: August 18, 1956

Amend Reason: SET 5-1/2" LINER

Completion Date: August 19, 1956

Recomplete Date: May 24, 2019

Drill Type: STRAIGHT HOLE

Well Name: CLAUDE BAXTER 1

Purchaser/Measurer:

Location: MCCLAIN 20 6N 3W
C NW SE
1980 FSL 660 FWL of 1/4 SEC
Latitude: 34.977067 Longitude: -97.536164
Derrick Elevation: 1182 Ground Elevation: 1168

First Sales Date:

Operator: SHIDLER MARK L INC 15946

1313 CAMPBELL RD BLDG D
HOUSTON, TX 77055-6429

Completion Type	
X	Single Zone
	Multiple Zone
	Commingled

Location Exception
Order No
There are no Location Exception records to display.

Increased Density
Order No
There are no Increased Density records to display.

Casing and Cement							
Type	Size	Weight	Grade	Feet	PSI	SAX	Top of CMT
CONDUCTOR	16	42.8	NT	48		3	SURFACE
SURFACE	10.75	32 / 40	H-40	1265		1000	SURFACE
PRODUCTION	7	23 / 26	N / S	10550		380	8465

Liner								
Type	Size	Weight	Grade	Length	PSI	SAX	Top Depth	Bottom Depth
LINER	5.50	17	N-80	0	0	200	SURFACE	9769

Total Depth: 10550

Packer	
Depth	Brand & Type
There are no Packer records to display.	

Plug	
Depth	Plug Type
There are no Plug records to display.	

Initial Test Data

Test Date	Formation	Oil BBL/Day	Oil-Gravity (API)	Gas MCF/Day	Gas-Oil Ratio Cu FT/BBL	Water BBL/Day	Pumpin or Flowing	Initial Shut-In Pressure	Choke Size	Flow Tubing Pressure
Jun 25, 2019	BROMIDE	54	42	26	481	140	PUMPING			

Completion and Test Data by Producing Formation

Formation Name: BROMIDE		Code: 202BRMD		Class: OIL	
Spacing Orders		Perforated Intervals			
Order No	Unit Size	From	To		
There are no Spacing Order records to display.		10052	10195		
Acid Volumes		Fracture Treatments			
There are no Acid Volume records to display.		There are no Fracture Treatments records to display.			

Formation	Top
DEESE	7814
GIBSON	8148
HART	8383
WOODFORD	8815
HUNTON	8970
SYLVAN	9357
VIOLA	9415
BROMIDE	9860
TULIP CREEK	10306
MCLISH	10475

Were open hole logs run? Yes

Date last log run: August 01, 1956

Were unusual drilling circumstances encountered? No

Explanation:

Other Remarks
ORIGINALLY USED TUBING STRING COMPLETION. GULF OIL SQUEEZED HUNTON PERFORATIONS 8,970' - 9,000' WITH 300 SACKS CLASS H. GAS LIFTED BROMIDE (JULY 1977 - DECEMBER 1980). ROD PUMPED (DECEMBER 1980 - PRESENT). MAY 2019 SET 5-1/2", 17#, N-80 CASING TO 9,869' AND CEMENT WITH 200 SACKS 50/50 POZ.

FOR COMMISSION USE ONLY
<div>Status: Accepted</div> <div>1143162</div>

API NO. 35-087-35604
OTC PROD UNIT NO. 087-18950

(PLEASE TYPE OR USE BLACK INK ONLY)

OKLAHOMA CORPORATION COMMISSION

Oil & Gas Conservation Division
Post Office Box 52000
Oklahoma City, Oklahoma 73152-2000
Rule 165-10-3-25

RECEIVED
AUG 16 2019
Oklahoma Corporation
Commission

Form 1002A
Rev 2009

ORIGINAL
☒ AMENDED (Reason)

Set 5-1/2" Liner

COMPLETION REPORT

TYPE OF DRILLING OPERATION

☒ STRAIGHT HOLE ☐ DIRECTIONAL HOLE ☐ HORIZONTAL HOLE
☐ SERVICE WELL

If directional or horizontal, see reverse for bottom hole location.

COUNTY McClain SEC 20 TWP 6N RGE 3W

LEASE NAME Claude Baxter WELL NO. 1

1/4 ~~Sec 15~~ 1/4 NW 1/4 SE 1/4 FSL OF 1980 FWL OF 660
1/4 SEC 1/4 SEC

ELEVATION Derrick FL 1182 Ground 1168 Latitude (if known) 34.977067

OPERATOR NAME Shidler, Mark L., Inc.

ADDRESS 1313 Campbell Road, Bldg. D

CITY Houston STATE Texas ZIP 77055

SPUD DATE 06/01/1956

DRLG FINISHED DATE 08/19/1956

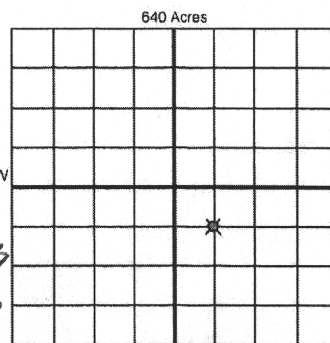
DATE OF WELL COMPLETION 08/19/1956

1st PROD DATE 08/19/1956

RECOMP DATE 04/22/1970

Longitude (if known) - 97.536164

OTC/OCC OPERATOR NO 15946



COMPLETION TYPE

☒ SINGLE ZONE
☐ MULTIPLE ZONE
Application Date
☐ COMINGLED
Application Date
LOCATION EXCEPTION
ORDER NO.
INCREASED DENSITY
ORDER NO.

CASING & CEMENT (Attach Form 1002C)

TYPE	SIZE	WEIGHT	GRADE	FEET	PSI	SAX	TOP OF CMT
CONDUCTOR	16"	42.8	NT	48'		3-Yds.	Surf.
SURFACE	10.75"	32/40	H-40	1265'		1000	Surf.
INTERMEDIATE							
PRODUCTION	7"	23/26	N/S	10,550'		380	8465'
LINER	5.50"	17#	N-80	9769' - Surface		200	Surf.
						TOTAL DEPTH	10550'

PACKER @ BRAND & TYPE

PLUG @ TYPE

PLUG @ TYPE

TOTAL DEPTH

PACKER @ BRAND & TYPE

PLUG @ TYPE

PLUG @ TYPE

COMPLETION & TEST DATA BY PRODUCING FORMATION

FORMATION	Bromide/Hunton	Bromide	Bromide		
SPACING & SPACING ORDER NUMBER	40	40	40		
CLASS: Oil, Gas, Dry, Inj, Disp, Comm Disp, Svc	Oil	Oil	Oil		
PERFORATED INTERVALS	8970'-9000' 10052'-10195'	10052'-10195'	10052'-10195'		
ACID/VOLUME					
FRACTURE TREATMENT (Fluids/Prop Amounts)					

Min Gas Allowable (165-10-17-7)

Gas Purchaser/Measurer
First Sales Date

INITIAL TEST DATA

Oil Allowable (165-10-13-3)

INITIAL TEST DATE	9/14/1956	4/22/1970	6/25/2019
OIL-BBL/DAY	389	215	54
OIL-GRAVITY (API)	42	42	42
GAS-MCF/DAY	300		26
GAS-OIL RATIO CU FT/BBL			481
WATER-BBL/DAY			140
PUMPING OR FLOWING	F	F	P
INITIAL SHUT-IN PRESSURE			
CHOKE SIZE			Op.
FLOW TUBING PRESSURE			

AS SUBMITTED

A record of the formations drilled through, and pertinent remarks are presented on the reverse. I declare that I have knowledge of the contents of this report and am authorized by my organization to make this report, which was prepared by me or under my supervision and direction, with the data and facts stated herein to be true, correct, and complete to the best of my knowledge and belief.

SIGNATURE

Gregory B. Gregson

8/16/2019

713-481-6487

1313 Campbell Road, Bldg. D

Houston

Texas

77055

gggregson@markshidlerinc.com

ADDRESS

CITY

STATE

ZIP

EMAIL ADDRESS

PLEASE TYPE OR USE BLACK INK ONLY

FORMATION RECORD

Give formation names and tops, if available, or descriptions and thickness of formations drilled through. Show intervals cored or drillstem tested.

NAMES OF FORMATIONS	TOP
Deese	7,814
Gibson	8,148
Hart	8383
Woodford	8,815
Hunton	8,970
Sylvan	9,357
Viola	9,415
Bromide	9,860
Tulip Creek	10,306
McLish	10,475

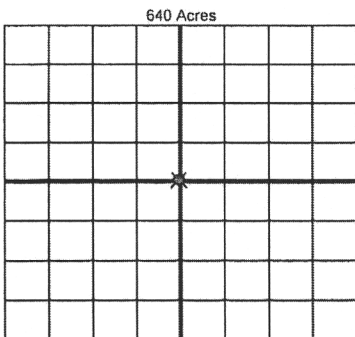
LEASE NAME Claude Baxter

WELL NO. 1

FOR COMMISSION USE ONLY	
ITD on file <input type="checkbox"/> YES <input type="checkbox"/> NO	
APPROVED _____	DISAPPROVED _____
2) Reject Codes	

Were open hole logs run?	<u>X</u> yes <input type="checkbox"/> no
Date Last log was run	<u>8/1/1956</u>
Was CO ₂ encountered?	<input type="checkbox"/> yes <input type="checkbox"/> no at what depths? _____
Was H ₂ S encountered?	<input type="checkbox"/> yes <input type="checkbox"/> no at what depths? _____
Were unusual drilling circumstances encountered?	<input type="checkbox"/> yes <input type="checkbox"/> no
If yes, briefly explain below	

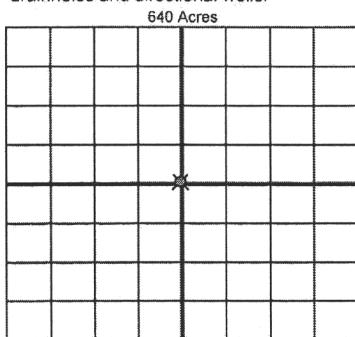
Other remarks: Originally ual Tbg. string completion. Gulf Oil Sqz'd. Hunton perforations 98970'-9000') w/300 sacks Class H. Gas Lifted Bromide (July 1977-Dec 1980). Rod pumped (Dec. 1980 - present). May 2019 set 5-1/2", 17#, N-80 Csg. to 9869' & cement w/200 sacks 50/50 Poz.



If more than three drainholes are proposed, attach a separate sheet indicating the necessary information.

Direction must be stated in degrees azimuth
Please note, the horizontal drainhole and its end point must be located within the boundaries of the lease or spacing unit

Directional surveys are required for all drainholes and directional wells.



BOTTOM HOLE LOCATION FOR DIRECTIONAL HOLE

SEC	TWP	RGE	COUNTY
Spot Location			
1/4	1/4	1/4	1/4
Measured Total Depth		True Vertical Depth	BHL From Lease, Unit, or Property Line:

BOTTOM HOLE LOCATION FOR HORIZONTAL HOLE: (LATERALS)

LATERAL #1			
SEC	TWP	RGE	COUNTY
Spot Location			
1/4	1/4	1/4	1/4
Depth of Deviation		Radius of Turn	Direction
Measured Total Depth		True Vertical Depth	BHL From Lease, Unit, or Property Line:

LATERAL #2			
SEC	TWP	RGE	COUNTY
Spot Location			
1/4	1/4	1/4	1/4
Depth of Deviation		Radius of Turn	Direction
Measured Total Depth		True Vertical Depth	BHL From Lease, Unit, or Property Line:

LATERAL #3			
SEC	TWP	RGE	COUNTY
Spot Location			
1/4	1/4	1/4	1/4
Depth of Deviation		Radius of Turn	Direction
Measured Total Depth		True Vertical Depth	BHL From Lease, Unit, or Property Line:

API NO. 35-087-35604
OTC PROD. UNIT NO. 087-18950

(PLEASE TYPE OR USE BLACK INK ONLY)

OKLAHOMA CORPORATION COMMISSION

Oil & Gas Conservation Division

Post Office Box 52000

Oklahoma City, Oklahoma 73152-2000

Rule 165:10-3-25

RECEIVED

Form 1002A

Rev. 2009

JUN 20 2019

OKLAHOMA CORPORATION COMMISSION

ORIGINAL
☒ AMENDED (Reason)

Set 5-1/2" Liner

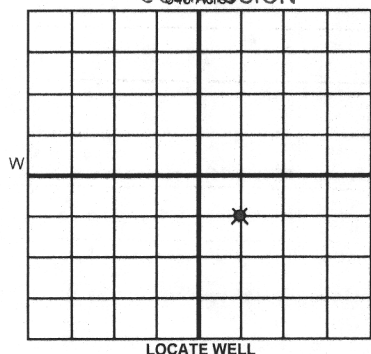
COMPLETION REPORT

TYPE OF DRILLING OPERATION

☒ STRAIGHT HOLE ☐ DIRECTIONAL HOLE ☐ HORIZONTAL HOLE
☐ SERVICE WELL

If directional or horizontal, see reverse for bottom hole location.

COUNTY	McClain	SEC	20	TWP	6N	RGE	3W
LEASE NAME	Claude Baxter	WELL NO.	1	DATE OF WELL COMPLETION	08/19/1956	1st PROD DATE	08/23/1956
1/4 sec 1/4 NW 1/4 SE 1/4	FSL OF 1/4 SEC	1980	FWL OF 1/4 SEC	660	RECOMP DATE	04/22/1970	
ELEVATION Derrick FL	1182	Ground	1168	Latitude (if known)	34.977067	Longitude (if known)	97.536164
OPERATOR NAME	Shidler, Mark L., Inc.	OTC / OCC OPERATOR NO.	15946				
ADDRESS	1313 Campbell Road, Bldg. D						
CITY	Houston	STATE	Texas	ZIP	77055		



COMPLETION TYPE

<input checked="" type="checkbox"/> SINGLE ZONE	
<input type="checkbox"/> MULTIPLE ZONE	
Application Date	
COMINGLED	
Application Date	
LOCATION EXCEPTION ORDER NO.	
INCREASED DENSITY ORDER NO.	

CASING & CEMENT (Attach Form 1002C)

TYPE	SIZE	WEIGHT	GRADE	FEET	PSI	SAX	TOP OF CMT
CONDUCTOR	16"	42.8	NT	48'		3-Yds.	Surf.
SURFACE	10.75"	32/40	H-40	1265'		1000	Surf.
INTERMEDIATE							
PRODUCTION	7"	23/26	N/S	10,550'		380	8465'
LINER	5.50"	17#	N-80	9769' - surface		200	Surf.
						TOTAL DEPTH	10550'

PACKER @ _____ BRAND & TYPE _____ PLUG @ _____ TYPE _____ PLUG @ _____ TYPE _____
PACKER @ _____ BRAND & TYPE _____ PLUG @ _____ TYPE _____ PLUG @ _____ TYPE _____

COMPLETION & TEST DATA BY PRODUCING FORMATION

FORMATION	Bromide/Hunton	Bromide				
SPACING & SPACING ORDER NUMBER	40	40				
CLASS: Oil, Gas, Dry, Inj, Disp, Comm Disp, Svc	Oil	Oil				
PERFORATED INTERVALS	8970'-9000'	10052'-10195'				
	10052'-10195'					
ACID/VOLUME						
FRACTURE TREATMENT (Fluids/Prop Amounts)						

AS SUBMITTED

Min Gas Allowable (165:10-17-7)

Gas Purchaser/Measurer

☐ OR
Oil Allowable (165:10-13-3)

First Sales Date

INITIAL TEST DATA

INITIAL TEST DATE	9/14/1956	4/22/1970				
OIL-BBL/DAY	389	215				
OIL-GRAVITY (API)	42	42				
GAS-MCF/DAY	300					
GAS-OIL RATIO CU FT/BBL						
WATER-BBL/DAY						
PUMPING OR FLOWING	F	F				
INITIAL SHUT-IN PRESSURE						
CHOKE SIZE						
FLOW TUBING PRESSURE						

Need New Initial test

A record of the formations drilled through, and pertinent remarks are presented on the reverse. I declare that I have knowledge of the contents of this report and am authorized by my organization to make this report, which was prepared by me or under my supervision and direction, with the data and facts stated herein to be true, correct, and complete to the best of my knowledge and belief.

SIGNATURE	NAME (PRINT OR TYPE)	DATE	PHONE NUMBER
1313 Campbell Road, Bldg. D	Houston Texas 77055	6/17/2019	713-481-6487
ADDRESS	CITY STATE ZIP	EMAIL ADDRESS	

PLEASE TYPE OR USE BLACK INK ONLY

FORMATION RECORD

Give formation names and tops, if available, or descriptions and thickness of formations drilled through. Show intervals cored or drillstem tested.

LEASE NAME Claude Baxter

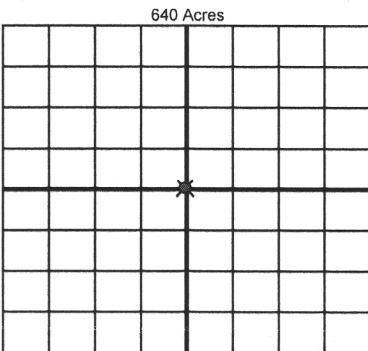
WELL NO. 1

NAMES OF FORMATIONS	TOP
Deese	7,814
Gibson	8,148
Hart	8383
Woodford	8,815
Hunton	8,970
Sylvan	9,357
Viola	9,415
Bromide	9,860
Tulip Creek	10,306
McLish	10,475

FOR COMMISSION USE ONLY	
ITD on file <input type="checkbox"/> YES <input type="checkbox"/> NO	
APPROVED _____	DISAPPROVED _____
2) Reject Codes	

Were open hole logs run?	<u>X</u> yes <input type="checkbox"/> no
Date Last log was run	<u>8/1/1956</u>
Was CO ₂ encountered?	<input type="checkbox"/> yes <input type="checkbox"/> no at what depths? _____
Was H ₂ S encountered?	<input type="checkbox"/> yes <input type="checkbox"/> no at what depths? _____
Were unusual drilling circumstances encountered?	<input type="checkbox"/> yes <input type="checkbox"/> no
If yes, briefly explain below	

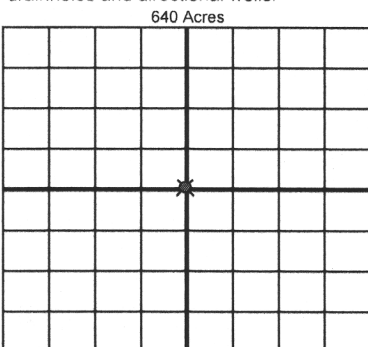
Other remarks: Used Originally un Tbg. string completion. Gulf Oil Sqz'd. Hunton perforations (8970'-9000') w/300 sacks Class H. Gas Lifted Bromide (July 1977-Dec 1980). Rod pumped (Dec. 1980 - present). May 2019 set 5-1/2", 17#, N-80 Csg. to 9869' & cement w/200 sacks 50/50 Poz.



If more than three drainholes are proposed, attach a separate sheet indicating the necessary information.

Direction must be stated in degrees azimuth. Please note, the horizontal drainhole and its end point must be located within the boundaries of the lease or spacing unit.

Directional surveys are required for all drainholes and directional wells.



BOTTOM HOLE LOCATION FOR DIRECTIONAL HOLE

SEC	TWP	RGE	COUNTY
Spot Location			
1/4	1/4	1/4	1/4
Measured Total Depth		True Vertical Depth	BHL From Lease, Unit, or Property Line:

BOTTOM HOLE LOCATION FOR HORIZONTAL HOLE: (LATERALS)

LATERAL #1

SEC	TWP	RGE	COUNTY
Spot Location			
1/4	1/4	1/4	1/4
Depth of Deviation		Radius of Turn	Direction
Measured Total Depth		True Vertical Depth	BHL From Lease, Unit, or Property Line:

LATERAL #2

SEC	TWP	RGE	COUNTY
Spot Location			
1/4	1/4	1/4	1/4
Depth of Deviation		Radius of Turn	Direction
Measured Total Depth		True Vertical Depth	BHL From Lease, Unit, or Property Line:

LATERAL #3

SEC	TWP	RGE	COUNTY
Spot Location			
1/4	1/4	1/4	1/4
Depth of Deviation		Radius of Turn	Direction
Measured Total Depth		True Vertical Depth	BHL From Lease, Unit, or Property Line: