

Oklahoma Corporation Commission
Oil & Gas Conservation Division
Post Office Box 52000
Oklahoma City, Oklahoma 73152-2000
Rule 165: 10-3-25

Form 1002A

API No.: 35131252470001

Completion Report

Spud Date: January 01, 1900

OTC Prod. Unit No.:

Drilling Finished Date: January 02, 1900

Amended

1st Prod Date:

Amend Reason: RECOMPLETE

Completion Date: January 03, 1900

Recomplete Date: December 18, 2018

Drill Type: STRAIGHT HOLE

Well Name: PHILLIPS P-3

Purchaser/Measurer:

Location: ROGERS 3 24N 17E
E2 E2 NE SE
1980 FSL 2475 FWL of 1/4 SEC
Derrick Elevation: 0 Ground Elevation: 703

First Sales Date:

Operator: WESTEND OPERATING LLC 23593

17303 S 4190 RD
CLAREMORE, OK 74017-2837

Completion Type		Location Exception		Increased Density	
X	Single Zone	Order No		Order No	
	Multiple Zone	There are no Location Exception records to display.		There are no Increased Density records to display.	
	Commingled				

Casing and Cement							
Type	Size	Weight	Grade	Feet	PSI	SAX	Top of CMT
CONDUCTOR	7	17		50			SURFACE
PRODUCTION	4 1/2	9 1/2		425			SURFACE

Liner								
Type	Size	Weight	Grade	Length	PSI	SAX	Top Depth	Bottom Depth
There are no Liner records to display.								

Total Depth: 427

Packer		Plug	
Depth	Brand & Type	Depth	Plug Type
There are no Packer records to display.		There are no Plug records to display.	

Initial Test Data										
Test Date	Formation	Oil BBL/Day	Oil-Gravity (API)	Gas MCF/Day	Gas-Oil Ratio Cu FT/BBL	Water BBL/Day	Pumpin or Flowing	Initial Shut-In Pressure	Choke Size	Flow Tubing Pressure
Jan 17, 2019	BARTLESVILLE	1	35			9	PUMPING			

Completion and Test Data by Producing Formation

Formation Name: BARTLESVILLE

Code: 404BRVL

Class: OIL

Spacing Orders

Order No	Unit Size
N/A	

Perforated Intervals

From	To
326	336
380	415

Acid Volumes

300 GALS

Fracture Treatments

2,500 LBS SAND

Formation	Top
BARTLESVILLE	326

Were open hole logs run? No

Date last log run: December 17, 2018

Were unusual drilling circumstances encountered? No

Explanation:

Other Remarks

BARTLESVILLE 380' - 415' EXISTING ZONE DECEMBER 1, 2009.
BARTLESVILLE 326' - 336' NEW ZONE JANUARY 15, 2019.

FOR COMMISSION USE ONLY

1141907

Status: Accepted

API NO. 131-25247
OTC PROD. UNIT NO. 14934

(PLEASE TYPE OR USE BLACK INK ONLY)

OKLAHOMA CORPORATION COMMISSION

Oil & Gas Conservation Division

Post Office Box 52000

Oklahoma City, Oklahoma 73152-2000

Rule 165:10-3-25

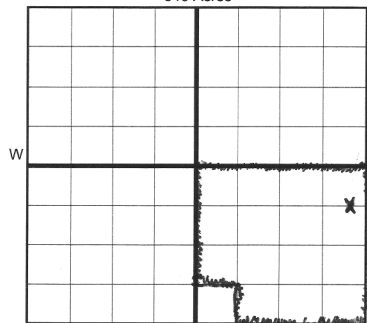
COMPLETION REPORT

RECEIVED

JAN 22 2019

OKLAHOMA CORPORATION COMMISSION

640 Acres



LOCATE WELL

☒ ORIGINAL
☐ AMENDED (Reason)

TYPE OF DRILLING OPERATION

☒ STRAIGHT HOLE ☐ DIRECTIONAL HOLE ☐ HORIZONTAL HOLE
☐ SERVICE WELL

If directional or horizontal, see reverse for bottom hole location.

COUNTY Rogers SEC 3 TWP 24N RGE 17E
LEASE NAME Phillips WELL NO. P3
FSL OF 1/4 SEC 1980 FWL OF 1/4 SEC 2475
ELEVATION 703' Ground Latitude (if known)
OPERATOR NAME Westend Operating, LLC OTC/OCC OPERATOR NO. 23593
ADDRESS 17303 S. 4190 Rd
CITY Claremore STATE O.K. ZIP 74017

COMPLETION TYPE

☒ SINGLE ZONE
☐ MULTIPLE ZONE
Application Date
COMINGLED
Application Date
LOCATION EXCEPTION
ORDER NO.
INCREASED DENSITY
ORDER NO.

CASING & CEMENT (Form 1002C must be attached)

TYPE	SIZE	WEIGHT	GRADE	FEET	PSI	SAX	TOP OF CMT
CONDUCTOR	7	17		50		?	surface
SURFACE							
INTERMEDIATE							
PRODUCTION	4 1/2	9 1/2		425		?	surface
LINER							

PACKER @ _____ BRAND & TYPE _____ PLUG @ _____ TYPE _____ PLUG @ _____ TYPE _____
PACKER @ _____ BRAND & TYPE _____ PLUG @ _____ TYPE _____ PLUG @ _____ TYPE _____

TOTAL DEPTH 427'

COMPLETION & TEST DATA BY PRODUCING FORMATION

FORMATION	<u>Bartlesville</u>	<u>Bartlesville</u>				
SPACING & SPACING ORDER NUMBER	<u>N.A.</u>	<u>N.A.</u>				
CLASS: Oil, Gas, Dry, Inj, Disp, Comm Disp, Svc	<u>oil</u>	<u>oil</u>				
PERFORATED INTERVALS	<u>326'-336'</u>	<u>380'-415'</u>				
ACID/VOLUME	<u>300 gal</u>					
FRACTURE TREATMENT (Fluids/Prop Amounts)	<u>2500 lbs.</u>					

Min Gas Allowable (165:10-17-7)

OR

Oil Allowable (165:10-13-3)

Gas Purchaser/Measurer

First Sales Date

INITIAL TEST DATA

INITIAL TEST DATE	<u>01-17-19</u>				
OIL-BBL/DAY	<u>1 BBL/DAY</u>				
OIL-GRAVITY (API)	<u>35</u>				
GAS-MCF/DAY					
GAS-OIL RATIO CU FT/BBL					
WATER-BBL/DAY	<u>9 BBL/DAY</u>				
PUMPING OR FLOWING	<u>pumping</u>				
INITIAL SHUT-IN PRESSURE	<u>none</u>				
CHOKE SIZE	<u>none</u>				
FLOW TUBING PRESSURE	<u>none</u>				

AS SUBMITTED

A record of the formations drilled through and pertinent remarks are presented on the reverse. I declare that I have knowledge of the contents of this report and am authorized by my organization to make this report, which was prepared by me or under my supervision and direction, with the data and facts stated herein to be true, correct, and complete to the best of my knowledge and belief.

SIGNATURE Andre van Westende NAME (PRINT OR TYPE)
ADDRESS 17303 S. 4190 Rd. Claremore, O.K. CITY Claremore STATE O.K. ZIP 74017
DATE 01-17-19 PHONE NUMBER 214-728-0816
EMAIL ADDRESS westendtrading1@sbcglobal.net

PLEASE TYPE OR USE BLACK INK ONLY

FORMATION RECORD

Give formation names and tops, if available, or descriptions and thickness of formations drilled through. Show intervals cored or drillstem tested.

NAMES OF FORMATIONS	TOP
Bartlesville	326

LEASE NAME

Phillips

WELL NO.

P3

FOR COMMISSION USE ONLY		
ITD on file	<input type="checkbox"/> YES	<input type="checkbox"/> NO
APPROVED	DISAPPROVED	2) Reject Codes

Were open hole logs run?	<input type="checkbox"/> yes	<input checked="" type="checkbox"/> no
Date Last log was run	12-17-18 Gamma Ray Neutron Cement Bond log	
Was CO ₂ encountered?	<input type="checkbox"/> yes	<input checked="" type="checkbox"/> no at what depths?
Was H ₂ S encountered?	<input type="checkbox"/> yes	<input checked="" type="checkbox"/> no at what depths?
Were unusual drilling circumstances encountered?	<input type="checkbox"/> yes <input checked="" type="checkbox"/> no	
If yes, briefly explain below		

Other remarks:

Bartlesville 380'-415' existing zone 12-01-09

Bartlesville 326'-336' new zone 01-15-19

640 Acres

If more than three drainholes are proposed, attach a separate sheet indicating the necessary information.

Direction must be stated in degrees azimuth. Please note, the horizontal drainhole and its end point must be located within the boundaries of the lease or spacing unit.

Directional surveys are required for all drainholes and directional wells.

640 Acres

BOTTOM HOLE LOCATION FOR DIRECTIONAL HOLE

SEC	TWP	RGE	COUNTY
Spot Location			
1/4	1/4	1/4	1/4
Measured Total Depth		True Vertical Depth	Feet From 1/4 Sec Lines FSL FWL
BHL From Lease, Unit, or Property Line:			

BOTTOM HOLE LOCATION FOR HORIZONTAL HOLE: (LATERALS)

LATERAL #1

SEC	TWP	RGE	COUNTY
Spot Location			
1/4	1/4	1/4	1/4
Depth of Deviation		Radius of Turn	Direction
Measured Total Depth		True Vertical Depth	Total Length
BHL From Lease, Unit, or Property Line:			

LATERAL #2

SEC	TWP	RGE	COUNTY
Spot Location			
1/4	1/4	1/4	1/4
Depth of Deviation		Radius of Turn	Direction
Measured Total Depth		True Vertical Depth	Total Length
BHL From Lease, Unit, or Property Line:			

LATERAL #3

SEC	TWP	RGE	COUNTY
Spot Location			
1/4	1/4	1/4	1/4
Depth of Deviation		Radius of Turn	Direction
Measured Total Depth		True Vertical Depth	Total Length
BHL From Lease, Unit, or Property Line:			

API NO. 131-25247
OTC PROD.
UNIT NO.

(PLEASE TYPE OR USE BLACK INK ONLY)

OKLAHOMA CORPORATION COMMISSION

Oil & Gas Conservation Division

Post Office Box 52000

Oklahoma City, Oklahoma 73152-2000

Rule 165:10-3-25

RECEIVED

AUG 12 2019

Form 1002A

Rev. 2009

ORIGINAL
AMENDED (Reason)

Re-complete

COMPLETION REPORT

OKLAHOMA CORPORATION
COMMISSION

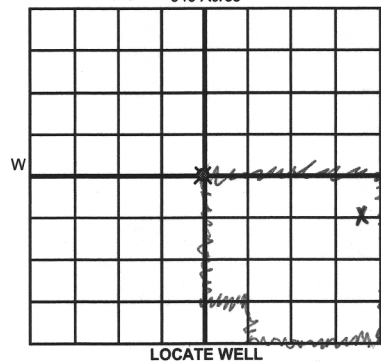
TYPE OF DRILLING OPERATION

☒ STRAIGHT HOLE ☐ DIRECTIONAL HOLE ☐ HORIZONTAL HOLE
☐ SERVICE WELL

If directional or horizontal, see reverse for bottom hole location.

COUNTY Rogers SEC 3 TWP 24N RGE 17E
LEASE NAME J Phillips P3
W2 1/4 SE 1/4 NE 1/4 SE 1/4 FSL OF 1/4 SEC 1980 FWL OF 1/4 SEC 2475
ELEVATION Derrick FL 703' Ground 703' Latitude (if known) Longitude (if known)
OPERATOR NAME Westcoast Operations, LLC OTC / OCC OPERATOR NO. 23593
ADDRESS 17303 S-4190 Rd
CITY Claremore STATE OK ZIP 74017

SPUD DATE
DRLG FINISHED DATE
DATE OF WELL COMPLETION
1st PROD DATE
RECOMP DATE 12-18-18



COMPLETION TYPE

☒ SINGLE ZONE 07-21-18
☐ MULTIPLE ZONE
Application Date
COMINGLED
Application Date
LOCATION EXCEPTION ORDER NO.
INCREASED DENSITY ORDER NO.

CASING & CEMENT (Attach Form 1002C)

TYPE	SIZE	WEIGHT	GRADE	FEET	PSI	SAX	TOP OF CMT
CONDUCTOR	7	12		50			surface
SURFACE							
INTERMEDIATE							
PRODUCTION	4 1/2	9 1/2		425			surface
LINER							

PACKER @ BRAND & TYPE PLUG @ TYPE PLUG @ TYPE
PACKER @ BRAND & TYPE PLUG @ TYPE PLUG @ TYPE

TOTAL DEPTH 427'

COMPLETION & TEST DATA BY PRODUCING FORMATION

FORMATION	Bartlesville						
SPACING & SPACING ORDER NUMBER	NA						
CLASS: Oil, Gas, Dry, Inj, Disp, Comm Disp, Svc	oil						
PERFORATED INTERVALS	326'-336'						
	380'-415'						
ACID/VOLUME	300 gal						
FRACTURE TREATMENT (Fluids/Prop Amounts)	2500 lbs						

Min Gas Allowable (165:10-17-7)

Gas Purchaser/Measurer

OR

First Sales Date

INITIAL TEST DATA

Oil Allowable (165:10-13-3)

INITIAL TEST DATE 01-17-19
OIL-BBL/DAY 1 BBL/day
OIL-GRAVITY (API) 35
GAS-MCF/DAY
GAS-OIL RATIO CU FT/BBL
WATER-BBL/DAY 9 BBL/day
PUMPING OR FLOWING pumping
INITIAL SHUT-IN PRESSURE none
CHOKE SIZE none
FLOW TUBING PRESSURE none

AS SUBMITTED

A record of the formations drilled through, and pertinent remarks are presented on the reverse. I declare that I have knowledge of the contents of this report and am authorized by my organization to make this report, which was prepared by me or under my supervision and direction, with the data and facts stated herein to be true, correct, and complete to the best of my knowledge and belief.

SIGNATURE [Signature] NAME (PRINT OR TYPE) Under westcoast
ADDRESS 17303 S-4190 Rd CITY Claremore STATE OK ZIP 74017
DATE 08-06-19 PHONE NUMBER 214-728-0216
EMAIL ADDRESS westcoasttrading1@SBCglobal.net

PLEASE TYPE OR USE BLACK INK ONLY

FORMATION RECORD

Give formation names and tops, if available, or descriptions and thickness of formations drilled through. Show intervals cored or drillstem tested.

NAMES OF FORMATIONS	TOP
Bartlesville	326'

LEASE NAME

Phillips

WELL NO.

P3

FOR COMMISSION USE ONLY

ITD on file ☐ YES ☐ NO

APPROVED DISAPPROVED

2) Reject Codes

Were open hole logs run?

☐ yes ☒ no

Date Last log was run

12-17-18 Gamma Bay Neutral Cement Bond

Was CO₂ encountered?

☐ yes ☒ no at what depths?

Was H₂S encountered?

☐ yes ☒ no at what depths?

Were unusual drilling circumstances encountered?

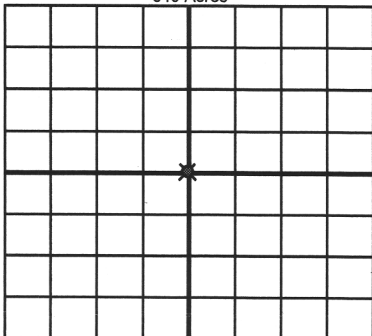
☐ yes ☒ no

If yes, briefly explain below

Other remarks:

Single zone with perforations at multiple intervals

640 Acres

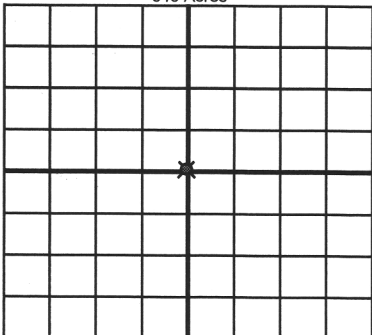


If more than three drainholes are proposed, attach a separate sheet indicating the necessary information.

Direction must be stated in degrees azimuth. Please note, the horizontal drainhole and its end point must be located within the boundaries of the lease or spacing unit.

Directional surveys are required for all drainholes and directional wells.

640 Acres



BOTTOM HOLE LOCATION FOR DIRECTIONAL HOLE

SEC	TWP	RGE	COUNTY
Spot Location	1/4	1/4	1/4
Measured Total Depth	True Vertical Depth	BHL From Lease, Unit, or Property Line:	FSL FWL

BOTTOM HOLE LOCATION FOR HORIZONTAL HOLE: (LATERALS)

LATERAL #1

SEC	TWP	RGE	COUNTY
Spot Location	1/4	1/4	1/4
Depth of Deviation	Radius of Turn	Direction	Total Length
Measured Total Depth	True Vertical Depth	BHL From Lease, Unit, or Property Line:	FSL FWL

LATERAL #2

SEC	TWP	RGE	COUNTY
Spot Location	1/4	1/4	1/4
Depth of Deviation	Radius of Turn	Direction	Total Length
Measured Total Depth	True Vertical Depth	BHL From Lease, Unit, or Property Line:	FSL FWL

LATERAL #3

SEC	TWP	RGE	COUNTY
Spot Location	1/4	1/4	1/4
Depth of Deviation	Radius of Turn	Direction	Total Length
Measured Total Depth	True Vertical Depth	BHL From Lease, Unit, or Property Line:	FSL FWL