

Oklahoma Corporation Commission
Oil & Gas Conservation Division
Post Office Box 52000
Oklahoma City, Oklahoma 73152-2000
Rule 165: 10-3-25

Form 1002A

API No.: 35131252410001

Completion Report

Spud Date: January 25, 2008

OTC Prod. Unit No.: 131-216102-0-0000

Drilling Finished Date: January 26, 2008

Amended

1st Prod Date: March 05, 2009

Amend Reason: RECOMPLETE

Completion Date: March 03, 2009

Recomplete Date: January 15, 2019

Drill Type: STRAIGHT HOLE

Well Name: PHILLIPS 1-A

Purchaser/Measurer:

Location: ROGERS 3 24N 17E
N2 N2 NE SE
2470 FSL 1980 FWL of 1/4 SEC
Derrick Elevation: 0 Ground Elevation: 778

First Sales Date:

Operator: WESTEND OPERATING LLC 23593

17303 S 4190 RD
CLAREMORE, OK 74017-2837

Completion Type		Location Exception		Increased Density	
X	Single Zone	Order No		Order No	
	Multiple Zone	690415		There are no Increased Density records to display.	
	Commingled				

Casing and Cement							
Type	Size	Weight	Grade	Feet	PSI	SAX	Top of CMT
CONDUCTOR	7	17		60			SURFACE
PRODUCTION	4 1/2	9 1/2		435			SURFACE

Liner								
Type	Size	Weight	Grade	Length	PSI	SAX	Top Depth	Bottom Depth
There are no Liner records to display.								

Total Depth: 438

Packer	
Depth	Brand & Type
There are no Packer records to display.	

Plug	
Depth	Plug Type
There are no Plug records to display.	

Initial Test Data										
Test Date	Formation	Oil BBL/Day	Oil-Gravity (API)	Gas MCF/Day	Gas-Oil Ratio Cu FT/BBL	Water BBL/Day	Pumpin or Flowing	Initial Shut-In Pressure	Choke Size	Flow Tubing Pressure
Jan 17, 2019	BARTLESVILLE	1	35			11	PUMPING		NONE	

Completion and Test Data by Producing Formation

Formation Name: BARTLESVILLE

Code: 404BRVL

Class: OIL

Spacing Orders

Order No	Unit Size
N/A	

Perforated Intervals

From	To
321	331
371	391

Acid Volumes

300 GALLONS

Fracture Treatments

5,000 POUNDS SAND

Formation	Top
BARTLESVILLE	321

Were open hole logs run? No

Date last log run: October 17, 2018

Were unusual drilling circumstances encountered? No

Explanation:

Other Remarks

SINGLE ZONE WITH PERFORATIONS AT MULTIPLE INTERVALS ORIGINAL ZONE 321'- 331' DONE 3/3/2009. NEW ZONE ADDED 371'-391' DONE 1/15/2019.

FOR COMMISSION USE ONLY

1143306

Status: Accepted

API NO. **31-25241-01**
OTC PROD. **#4934**
UNIT NO. **#4934**

(PLEASE TYPE OR USE BLACK INK ONLY)

OKLAHOMA CORPORATION COMMISSION
Oil & Gas Conservation Division
Post Office Box 52000
Oklahoma City, Oklahoma 73152-2000
Rule 165:10-3-25

RECEIVED

Form 1002A
Rev. 2009

AUG 12 2019

☐ ORIGINAL
☒ AMENDED (Reason)

Re-complete

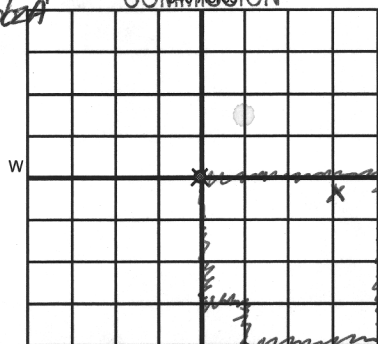
TYPE OF DRILLING OPERATION

☒ STRAIGHT HOLE ☐ DIRECTIONAL HOLE ☐ HORIZONTAL HOLE
☐ SERVICE WELL

If directional or horizontal, see reverse for bottom hole location.

COUNTY Rogers	SEC 3	TWP 24N	RGE 17E	SPUD DATE 1-25-2008	DATE OF WELL COMPLETION 3-3-09
LEASE NAME J. Phillips	WELL NO. 1A	1st PROD DATE 3-5-09	RECOMP DATE 01-15-19		
N 1/4 N 1/4 NE 1/4 SE 1/4	FSL OF 1/4 SEC 2470	FWL OF 1/4 SEC 1980			
ELEVATION 778'	Latitude (if known)	Longitude (if known)			
OPERATOR NAME Westend Operating, LLC	OTC / OCC OPERATOR NO. 23593				
ADDRESS 17303 S. 4190 Rd					
CITY Claremore	STATE OK	ZIP 74017			

OKLAHOMA CORPORATION COMMISSION



COMPLETION TYPE

<input checked="" type="checkbox"/> SINGLE ZONE	07-21-18
<input type="checkbox"/> MULTIPLE ZONE	
<input type="checkbox"/> COMMINGLED	
LOCATION EXCEPTION ORDER NO.	690415
INCREASED DENSITY ORDER NO.	

CASING & CEMENT (Attach Form 1002C)

TYPE	SIZE	WEIGHT	GRADE	FEET	PSI	SAX	TOP OF CMT
CONDUCTOR	7	17		60		?	surface
SURFACE							
INTERMEDIATE							
PRODUCTION	4 1/2	9 1/2		435		?	surface
LINER							
TOTAL DEPTH							438'

PACKER @ _____ BRAND & TYPE _____ PLUG @ _____ TYPE _____ PLUG @ _____ TYPE _____
PACKER @ _____ BRAND & TYPE _____ PLUG @ _____ TYPE _____ PLUG @ _____ TYPE _____

COMPLETION & TEST DATA BY PRODUCING FORMATION

FORMATION	Bartlesville					
SPACING & SPACING ORDER NUMBER	NA					
CLASS: Oil, Gas, Dry, Inj, Disp, Comm Disp, Svc	oil					
PERFORATED INTERVALS	321'-331' 371'-391'					
ACID/VOLUME	300 gal					
FRACTURE TREATMENT (Fluids/Prop Amounts)	5,000 lbs sand					

Min Gas Allowable (165:10-17-7)

Gas Purchaser/Measurer



OR

First Sales Date

Oil Allowable (165:10-13-3)

INITIAL TEST DATA

INITIAL TEST DATE	01-17-19				
OIL-BBL/DAY	1 BBL/day				
OIL-GRAVITY (API)	35				
GAS-MCF/DAY					
GAS-OIL RATIO CU FT/BBL					
WATER-BBL/DAY	11 BBL/day				
PUMPING OR FLOWING	pumping				
INITIAL SHUT-IN PRESSURE	none				
CHOKE SIZE	none				
FLOW TUBING PRESSURE	none				

AS SUBMITTED

A record of the formations drilled through, and pertinent remarks are presented on the reverse. I declare that I have knowledge of the contents of this report and am authorized by my organization to make this report, which was prepared by me or under my supervision and direction, with the data and facts stated herein to be true, correct, and complete to the best of my knowledge and belief.

SIGNATURE **Andrew Westend** DATE **08-06-19** PHONE NUMBER **214-728-0216**
ADDRESS **17303 S. 4190 Rd, Claremore** CITY **OK** STATE **74017** ZIP **westendtrading@sbglobal.net** EMAIL ADDRESS

PLEASE TYPE OR USE BLACK INK ONLY
FORMATION RECORD

Give formation names and tops, if available, or descriptions and thickness of formations drilled through. Show intervals cored or drillstem tested.

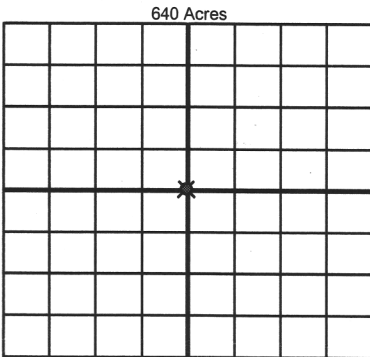
NAMES OF FORMATIONS	TOP
Bartlesville	321'

LEASE NAME Phillips WELL NO. 1A

FOR COMMISSION USE ONLY	
ITD on file <input type="checkbox"/> YES <input type="checkbox"/> NO	
APPROVED _____	DISAPPROVED _____
2) Reject Codes	

Were open hole logs run?	<input type="checkbox"/> yes <input checked="" type="checkbox"/> no
Date Last log was run	10-17-18 Gamma Ray Neutron Cement Bond
Was CO ₂ encountered?	<input type="checkbox"/> yes <input checked="" type="checkbox"/> no at what depths? _____
Was H ₂ S encountered?	<input type="checkbox"/> yes <input checked="" type="checkbox"/> no at what depths? _____
Were unusual drilling circumstances encountered?	<input type="checkbox"/> yes <input checked="" type="checkbox"/> no
If yes, briefly explain below	

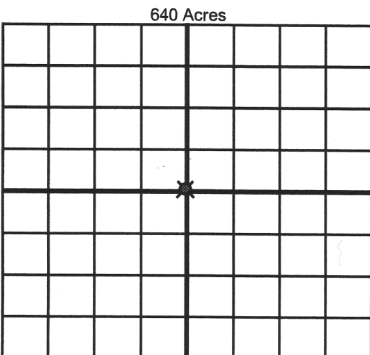
Other remarks:
Single zone with perforations at multiple intervals



If more than three drainholes are proposed, attach a separate sheet indicating the necessary information.

Direction must be stated in degrees azimuth. Please note, the horizontal drainhole and its end point must be located within the boundaries of the lease or spacing unit.

Directional surveys are required for all drainholes and directional wells.



BOTTOM HOLE LOCATION FOR DIRECTIONAL HOLE

SEC	TWP	RGE	COUNTY
Spot Location	1/4	1/4	1/4
Measured Total Depth	True Vertical Depth	Feet From 1/4 Sec Lines FSL FWL	
BHL From Lease, Unit, or Property Line:			

BOTTOM HOLE LOCATION FOR HORIZONTAL HOLE: (LATERALS)

LATERAL #1

SEC	TWP	RGE	COUNTY
Spot Location	1/4	1/4	1/4
Depth of Deviation	Radius of Turn	Direction	Total Length
Measured Total Depth	True Vertical Depth	Feet From 1/4 Sec Lines FSL FWL	
BHL From Lease, Unit, or Property Line:			

LATERAL #2

SEC	TWP	RGE	COUNTY
Spot Location	1/4	1/4	1/4
Depth of Deviation	Radius of Turn	Direction	Total Length
Measured Total Depth	True Vertical Depth	Feet From 1/4 Sec Lines FSL FWL	
BHL From Lease, Unit, or Property Line:			

LATERAL #3

SEC	TWP	RGE	COUNTY
Spot Location	1/4	1/4	1/4
Depth of Deviation	Radius of Turn	Direction	Total Length
Measured Total Depth	True Vertical Depth	Feet From 1/4 Sec Lines FSL FWL	
BHL From Lease, Unit, or Property Line:			