

Oklahoma Corporation Commission
Oil & Gas Conservation Division
Post Office Box 52000
Oklahoma City, Oklahoma 73152-2000
Rule 165: 10-3-25

Form 1002A

API No.: 35137266860001

Completion Report

Spud Date: February 02, 2009

OTC Prod. Unit No.:

Drilling Finished Date: February 06, 2009

Amended

1st Prod Date:

Amend Reason: CONVERT TO DISPOSAL

Completion Date: July 01, 2009

Recomplete Date: March 24, 2021

Drill Type: STRAIGHT HOLE

SERVICE WELL

Well Name: MYRTLE GREEN 14

Purchaser/Measurer:

Location: STEPHENS 27 1S 5W
SE SE NW SE
1485 FSL 1155 FWL of 1/4 SEC
Derrick Elevation: 1132 Ground Elevation: 0

First Sales Date:

Operator: GILBY SERVICES LLC 24430
PO BOX 36
301960 HIGHWAY 7
VELMA, OK 73491-0036

Completion Type		Location Exception		Increased Density	
X	Single Zone	Order No		Order No	
	Multiple Zone	There are no Location Exception records to display.		There are no Increased Density records to display.	
	Commingled				

Casing and Cement							
Type	Size	Weight	Grade	Feet	PSI	SAX	Top of CMT
PRODUCTION	5 1/2	15.5	J-55	1014		185	SURFACE

Liner								
Type	Size	Weight	Grade	Length	PSI	SAX	Top Depth	Bottom Depth
There are no Liner records to display.								

Total Depth: 1093

Packer		Plug	
Depth	Brand & Type	Depth	Plug Type
620	TENSION	1014	CASING SHOE

Initial Test Data										
Test Date	Formation	Oil BBL/Day	Oil-Gravity (API)	Gas MCF/Day	Gas-Oil Ratio Cu FT/BBL	Water BBL/Day	Pumpin or Flowing	Initial Shut-In Pressure	Choke Size	Flow Tubing Pressure
There are no Initial Data records to display.										

Completion and Test Data by Producing Formation

Formation Name: PERMIAN

Code: 459PRMN

Class: DISP

Spacing Orders**Order No****Unit Size**

There are no Spacing Order records to display.

Perforated Intervals**From****To**

644

660

698

708

718

728

882

892

Acid Volumes

There are no Acid Volume records to display.

Fracture Treatments

There are no Fracture Treatments records to display.

Formation	Top
PERMIAN	644

Were open hole logs run? Yes

Date last log run: July 01, 2009

Were unusual drilling circumstances encountered? No

Explanation:

Other Remarks

UIC PERMIT NUMBER 2100701301. OCC - 1002A ALSO CORRECTING ORIGINAL 1002A TOTAL DEPTH AND OPEN HOLE LOGS WERE RUN.

FOR COMMISSION USE ONLY

Status: Accepted

1146270

API NO. 137 26686
OTC PROD.
UNIT NO.

OIL AND GAS CONSERVATION DIVISION
P.O. Box 52000
Oklahoma City, OK 73152-2000
405-522-0577
OCCCentralProcessing@OCC.OK.GOV



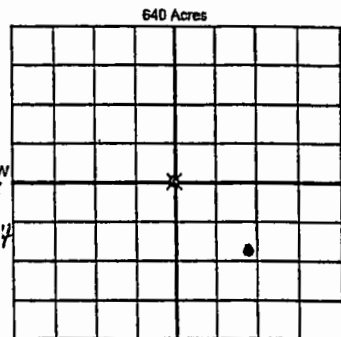
OKLAHOMA
Corporation
Commission

Form 1002A
Rev. 2020

ORIGINAL
AMENDED (Reason) Change from Production to Injection
Rule 165-10-3-25
COMPLETION REPORT

TYPE OF DRILLING OPERATION Convert to Disposal
☒ STRAIGHT HOLE ☐ DIRECTIONAL HOLE ☐ HORIZONTAL HOLE
☒ SERVICE WELL
If directional or horizontal, see reverse for bottom hole location.

COUNTY Stephens SEC 27 TWP 1S RGE 5W
LEASE NAME Myrtle Green WELL NO. 14
SE 1/4 SE 1/4 NW 1/4 SE 1/4 FSL OF 1452 FWL OF 1155 RECOMP DATE 3-24-2021
ELEVATION 1132' Ground Latitude Longitude
OPERATOR NAME Gilby Services LLC OTC / OCC OPERATOR NO. 24430
ADDRESS P.O. Box 36
CITY Velma STATE OKla ZIP 73491



COMPLETION TYPE
☒ SINGLE ZONE
☐ MULTIPLE ZONE
☐ COMMINGLED
LOCATION EXCEPTION ORDER NO.
MULTIUNIT ORDER NO.
INCREASED DENSITY ORDER NO.

CASING & CEMENT (Attach Form 1002C)

TYPE	SIZE	WEIGHT	GRADE	FEET	PSI	SAX	TOP OF CMT
CONDUCTOR							
SURFACE							
INTERMEDIATE	<u>5 1/2</u>	<u>15.5</u>	<u>J55</u>	<u>1014</u>		<u>185</u>	<u>Surface</u>
PRODUCTION							
LINER							

PACKER @ 620 BRAND & TYPE Tension PLUG @ 1014 TYPE Casing PLUG @ 1014 TYPE Shurb
PACKER @ 620 BRAND & TYPE Tension PLUG @ 1014 TYPE Casing PLUG @ 1014 TYPE Shurb
COMPLETION & TEST DATA BY PRODUCING FORMATION 459 PRIMN

FORMATION Permian

SPACING & SPACING ORDER NUMBER

CLASS: Oil, Gas, Dry, Inj, Disp, Comm Disp, Svc

PERFORATED INTERVALS 644-660 682-892 698-708 718-728

ACID/VOLUME

FRACTURE TREATMENT (Fluids/Prop Amounts)

RECEIVED
MAR 24 2021
OKLAHOMA CORPORATION COMMISSION

Min Gas Allowable (165-10-17-7) ☐ OR Oil Allowable (165-10-13-3) ☐
Purchaser/Measurer
First Sales Date

INITIAL TEST DATA

INITIAL TEST DATE	OIL-BBL/DAY	OIL-GRAVITY (API)	GAS-MCF/DAY	GAS-OIL RATIO CU FT/BBL	WATER-BBL/DAY	PUMPING OR FLOWING	INITIAL SHUT-IN PRESSURE	CHOKE SIZE	FLOW TUBING PRESSURE
<u>8-17-09</u>	<u>3</u>	<u>28</u>	<u>0</u>	<u>0</u>	<u>50</u>	<u>pump in</u>	<u>0</u>	<u>0</u>	<u>0</u>

A record of the formations drilled through, and pertinent remarks are presented on the reverse. I declare that I have knowledge of the contents of this report and am authorized by my organization to make this report, which was prepared by me or under my supervision and direction, with the data and facts stated herein to be true, correct, and complete to the best of my knowledge and belief.

Kelly Gilby SIGNATURE
Kelly Gilby NAME (PRINT OR TYPE)
P.O. Box 36 ADDRESS
Velma CITY
OK STATE
73491 ZIP
3-22-21 DATE
580-444-3377 PHONE NUMBER
Kellygilby@live.com EMAIL ADDRESS

PLEASE TYPE OR USE BLACK INK ONLY
FORMATION RECORD

Give formation names and tops, if available, or descriptions and thickness of formations drilled through. Show intervals cored or dristam tested.

NAMES OF FORMATIONS	TOP
Permian	644

LEASE NAME Myrtle Green

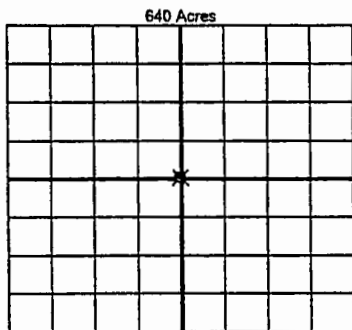
WELL NO. 14

FOR COMMISSION USE ONLY	
ITD on file <input type="checkbox"/> YES <input type="checkbox"/> NO	
APPROVED _____	DISAPPROVED _____
2) Reject Codes	

Were open hole logs run?	<input checked="" type="radio"/> yes <input type="radio"/> no
Date Last log was run	<u>7-1-09 CBL</u>
Was CO ₂ encountered?	<input type="radio"/> yes <input checked="" type="radio"/> no at what depths? _____
Was H ₂ S encountered?	<input type="radio"/> yes <input checked="" type="radio"/> no at what depths? _____
Were unusual drilling circumstances encountered?	<input type="radio"/> yes <input checked="" type="radio"/> no
If yes, briefly explain below	

Other remarks:

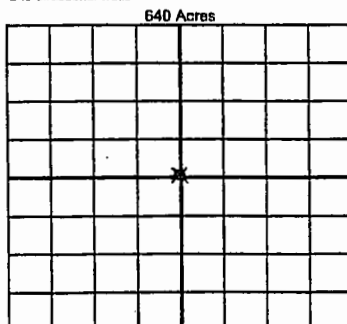
UIC permit # 2100701301
OCC - 1002A also correcting original 1002A total depth and
openhole logs were run



If more than three drainholes are proposed, attach a separate sheet indicating the necessary information.

Direction must be stated in degrees azimuth. Please note, the horizontal drainhole and its end point must be located within the boundaries of the lease or spacing unit.

Directional surveys are required for all drainholes and directional wells



BOTTOM HOLE LOCATION FOR DIRECTIONAL HOLE

SEC	TWP	RGE	COUNTY
1/4	1/4	1/4	1/4
Measured Total Depth	True Vertical Depth	Feet From 1/4 Sec Lines	
		BHL From Lease, Unit, or Property Line:	

BOTTOM HOLE LOCATION FOR HORIZONTAL HOLE: (LATERALS)

LATERAL #1			
SEC	TWP	RGE	COUNTY
1/4	1/4	1/4	1/4
Depth of Deviation	Radius of Turn	Direction	Total Length
Measured Total Depth	True Vertical Depth	BHL From Lease, Unit, or Property Line:	

LATERAL #2			
SEC	TWP	RGE	COUNTY
1/4	1/4	1/4	1/4
Depth of Deviation	Radius of Turn	Direction	Total Length
Measured Total Depth	True Vertical Depth	BHL From Lease, Unit, or Property Line:	

LATERAL #3			
SEC	TWP	RGE	COUNTY
1/4	1/4	1/4	1/4
Depth of Deviation	Radius of Turn	Direction	Total Length
Measured Total Depth	True Vertical Depth	BHL From Lease, Unit, or Property Line:	