

Oklahoma Corporation Commission
Oil & Gas Conservation Division
Post Office Box 52000
Oklahoma City, Oklahoma 73152-2000
Rule 165: 10-3-25

Form 1002A

API No.: 35125213930002

Completion Report

Spud Date: November 20, 1981

OTC Prod. Unit No.:

Drilling Finished Date: December 07, 1981

Amended

1st Prod Date: February 05, 1982

Amend Reason: CHANGE CLASS FROM INJECTOR TO OIL PRODUCER

Completion Date: January 08, 1982

Recomplete Date: July 01, 2021

Drill Type: STRAIGHT HOLE

Well Name: NW TECUMSEH UNIT 13-12

Purchaser/Measurer:

Location: POTTAWATOMIE 17 10N 3E
C SE NE SE
1650 FSL 2310 FWL of 1/4 SEC
Latitude: 35.337637 Longitude: -97.0024131
Derrick Elevation: 1053 Ground Elevation: 1044

First Sales Date:

Operator: HOOD OIL AND GAS LLC 24568

10800 E 51ST ST
TULSA, OK 74146-5805

Completion Type		Location Exception		Increased Density	
X	Single Zone	Order No		Order No	
	Multiple Zone	There are no Location Exception records to display.		There are no Increased Density records to display.	
	Commingled				

Casing and Cement							
Type	Size	Weight	Grade	Feet	PSI	SAX	Top of CMT
SURFACE	8 5/8	24	H-40	404	800	300	SURFACE
PRODUCTION	4 1/2	10.5	J-55	5226	1500	450	3750

Liner								
Type	Size	Weight	Grade	Length	PSI	SAX	Top Depth	Bottom Depth
There are no Liner records to display.								

Total Depth: 5262

Packer		Plug	
Depth	Brand & Type	Depth	Plug Type
There are no Packer records to display.		There are no Plug records to display.	

Initial Test Data

Test Date	Formation	Oil BBL/Day	Oil-Gravity (API)	Gas MCF/Day	Gas-Oil Ratio Cu FT/BBL	Water BBL/Day	Pumpin or Flowing	Initial Shut-In Pressure	Choke Size	Flow Tubing Pressure
Jul 01, 2021	RED FORK	1	37			380	SWABBIN			

Completion and Test Data by Producing Formation

Formation Name: RED FORK

Code: 404RDFK

Class: OIL

Spacing Orders

Order No	Unit Size
342977	UNIT

Perforated Intervals

From	To
4921	4926

Acid Volumes

There are no Acid Volume records to display.
--

Fracture Treatments

There are no Fracture Treatments records to display.
--

Formation	Top
SEE ORIGINAL 1002A	0

Were open hole logs run? No

Date last log run:

Were unusual drilling circumstances encountered? No

Explanation:

Other Remarks

OCC- ORDER 354223 TERMINATED BY FORM 1072 8/12/2021.

FOR COMMISSION USE ONLY

1146696

Status: Accepted

API NO. 35-125-21393
OTC PROD. UNIT NO. 42573629

Oil and Gas Conservation Division
P.O. Box 52000
Oklahoma City, OK 73152-2000
405-521-2331
OCCCentralProcessing@OCC.OK.GOV



OKLAHOMA
Corporation
Commission

Form 1002A
Rev. 2020

ORIGINAL AMENDED (Reason) Change class from injector to oil producer

Rule 165:10-3-25

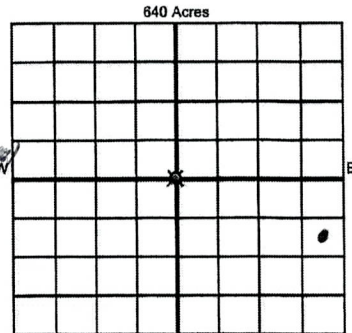
COMPLETION REPORT

TYPE OF DRILLING OPERATION

☒ STRAIGHT HOLE ☐ DIRECTIONAL HOLE ☐ HORIZONTAL HOLE
☐ SERVICE WELL

If directional or horizontal, see reverse for bottom hole location.

COUNTY	Pottawatomie	SEC	17	TWP	10N	RGE	3E	SPUD DATE	11/20/81	
LEASE NAME	NorthWestTecomsehUnit				WELL NO.	13-12	DATE OF WELL COMPLETION	1/8/82	DRLG FINISHED DATE	12/7/81
ELEVATION	1053	Ground	1044	Latitude	FSL 1650 FWL 2310		1st PROD DATE	2-5-1982	RECOMP DATE	7/1/21
OPERATOR NAME	Hood Oil and Gas LLC				OTC / OCC OPERATOR NO.	24568				
ADDRESS	10800 E 51st									
CITY	Tulsa		STATE	OK		ZIP	74146			



COMPLETION TYPE

<input checked="" type="radio"/> SINGLE ZONE	
<input type="radio"/> MULTIPLE ZONE	
Application Date	
<input type="radio"/> COMMINGLED	
Application Date	
LOCATION EXCEPTION ORDER NO.	
MULTIUNIT ORDER NO.	
INCREASED DENSITY ORDER NO.	

CASING & CEMENT (Attach Form 1002C)

TYPE	SIZE	WEIGHT	GRADE	FEET	PSI	SAX	TOP OF CMT
CONDUCTOR							
SURFACE	8 5/8	24	H40	404	800	300	circ to surface
INTERMEDIATE							
PRODUCTION	4 1/2	10.5	J55	5226	1500	450	3750
LINER							

PACKER @ _____ BRAND & TYPE _____ PLUG @ _____ TYPE _____ PLUG @ _____ TYPE _____
PACKER @ _____ BRAND & TYPE _____ PLUG @ _____ TYPE _____ PLUG @ _____ TYPE _____

TOTAL DEPTH 5262

COMPLETION & TEST DATA BY PRODUCING FORMATION

FORMATION	Red Fork					
SPACING & SPACING ORDER NUMBER	342977 (unit)					
CLASS: Oil, Gas, Dry, Inj, Disp, Comm Disp, Svc	Oil					
PERFORATED INTERVALS	4921-4926					
ACID/VOLUME						
FRACTURE TREATMENT (Fluids/Prop Amounts)						

RECEIVED

JUL 21 2021

OKLAHOMA CORPORATION
COMMISSION

Min Gas Allowable (165:10-17-7)

OR

Oil Allowable (165:10-13-3)

Purchaser/Measurer

First Sales Date

INITIAL TEST DATA

INITIAL TEST DATE	7/1/21					
OIL-BBL/DAY	1					
OIL-GRAVITY (API)	37					
GAS-MCF/DAY	0					
GAS-OIL RATIO CU FT/BBL	0					
WATER-BBL/DAY	380					
PUMPING OR FLOWING	swabbing					
INITIAL SHUT-IN PRESSURE						
CHOKE SIZE						
FLOW TUBING PRESSURE						

A record of the formations drilled through and pertinent remarks are presented on the reverse. I declare that I have knowledge of the contents of this report and am authorized by my organization to make this report, which was prepared by me or under my supervision and direction, with the data and facts stated herein to be true, correct, and complete to the best of my knowledge and belief.

SIGNATURE

10800 E 51st

ADDRESS

Gary A Green

NAME (PRINT OR TYPE)

Tulsa

CITY

OK

STATE

74146

ZIP

7/19/21

DATE

918-697-0370

PHONE NUMBER

gagreen@mail.com

EMAIL ADDRESS

PLEASE TYPE OR USE BLACK INK ONLY

FORMATION RECORD

Give formation names and tops, if available, or descriptions and thickness of formations drilled through. Show intervals cored or drillstem tested.

LEASE NAME NorthWestTecomsehUnit

WELL NO. 13-12

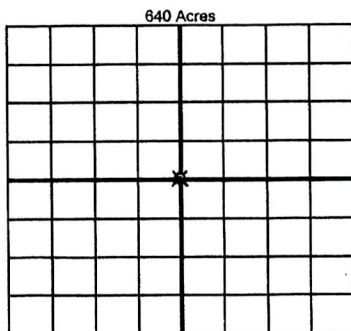
NAMES OF FORMATIONS	TOP
<i>see original 1002A</i>	

FOR COMMISSION USE ONLY	
ITD on file <input type="checkbox"/> YES <input type="checkbox"/> NO	
APPROVED _____	DISAPPROVED _____
2) Reject Codes	

Were open hole logs run?	<input type="radio"/> yes <input type="radio"/> no
Date Last log was run	_____
Was CO ₂ encountered?	<input type="radio"/> yes <input type="radio"/> no at what depths? _____
Was H ₂ S encountered?	<input type="radio"/> yes <input type="radio"/> no at what depths? _____
Were unusual drilling circumstances encountered?	<input type="radio"/> yes <input type="radio"/> no
If yes, briefly explain below	

Other remarks:

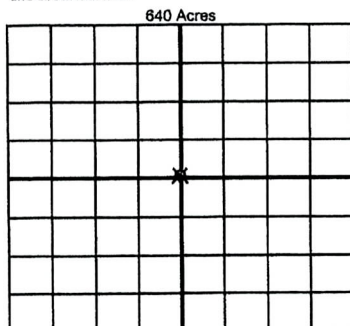
DCC-order 354223 terminated by 1072 8/12/2021



If more than three drainholes are proposed, attach a separate sheet indicating the necessary information.

Direction must be stated in degrees azimuth. Please note, the horizontal drainhole and its end point must be located within the boundaries of the lease or spacing unit.

Directional surveys are required for all drainholes and directional wells



BOTTOM HOLE LOCATION FOR DIRECTIONAL HOLE

SEC	TWP	RGE	COUNTY
1/4	1/4	1/4	1/4
Measured Total Depth		True Vertical Depth	Feet From 1/4 Sec Lines BHL From Lease, Unit, or Property Line:

BOTTOM HOLE LOCATION FOR HORIZONTAL HOLE: (LATERALS)

LATERAL #1			
SEC	TWP	RGE	COUNTY
1/4	1/4	1/4	1/4
Depth of Deviation		Radius of Turn	Direction Total Length
Measured Total Depth		True Vertical Depth	BHL From Lease, Unit, or Property Line:

LATERAL #2			
SEC	TWP	RGE	COUNTY
1/4	1/4	1/4	1/4
Depth of Deviation		Radius of Turn	Direction Total Length
Measured Total Depth		True Vertical Depth	BHL From Lease, Unit, or Property Line:

LATERAL #3			
SEC	TWP	RGE	COUNTY
1/4	1/4	1/4	1/4
Depth of Deviation		Radius of Turn	Direction Total Length
Measured Total Depth		True Vertical Depth	BHL From Lease, Unit, or Property Line: