

Oklahoma Corporation Commission  
Oil & Gas Conservation Division  
Post Office Box 52000  
Oklahoma City, Oklahoma 73152-2000  
Rule 165: 10-3-25

Form 1002A

API No.: 35071244660003

**Completion Report**

Spud Date: September 23, 2014

OTC Prod. Unit No.: 071-215443-0-0000

Drilling Finished Date: September 28, 2014

**Amended**

1st Prod Date: January 16, 2015

Amend Reason: RE-ACIDIZE EXISTING OSWEGO PERFORATIONS

Completion Date: January 16, 2015

Recomplete Date: January 18, 2022

**Drill Type: STRAIGHT HOLE**

Well Name: ARNOLD 1-9

Purchaser/Measurer:

Location: KAY 9 28N 1W  
C SW SW  
660 FSL 660 FWL of 1/4 SEC  
Derrick Elevation: 1070 Ground Elevation: 1059

First Sales Date:

Operator: BARBER OIL LLC 24363

8801 S YALE AVE STE 150  
TULSA, OK 74137-3575

Completion Type		Location Exception		Increased Density	
X	Single Zone	Order No		Order No	
	Multiple Zone	There are no Location Exception records to display.		There are no Increased Density records to display.	
	Commingled				

Casing and Cement							
Type	Size	Weight	Grade	Feet	PSI	SAX	Top of CMT
SURFACE	8 5/8	24	J-55	258	300	240	SURFACE
PRODUCTION	5 1/2	15.5	J-55	3797	1500	300	1916

Liner								
Type	Size	Weight	Grade	Length	PSI	SAX	Top Depth	Bottom Depth
There are no Liner records to display.								

**Total Depth: 3804**

Packer		Plug	
Depth	Brand & Type	Depth	Plug Type
There are no Packer records to display.		3440	CIBP

Initial Test Data
-------------------

Test Date	Formation	Oil BBL/Day	Oil-Gravity (API)	Gas MCF/Day	Gas-Oil Ratio Cu FT/BBL	Water BBL/Day	Pumpin or Flowing	Initial Shut-In Pressure	Choke Size	Flow Tubing Pressure
Dec 23, 2014	OSWEGO	1	38	40	40000	2	PUMPING	900		
Jan 21, 2022	OSWEGO	2.9	38			140	PUMPING			

#### Completion and Test Data by Producing Formation

Formation Name: OSWEGO

Code: 404OSWG

Class: OIL

#### Spacing Orders

Order No	Unit Size
590497	160

#### Perforated Intervals

From	To
3258	3330

#### Acid Volumes

1,500 GALLONS (DECEMBER 23, 2014)  
RE-ACIDIZED 5,000 GALLONS (DECEMBER 2, 2016)  
RE-ACIDIZE 6,000 GALLONS (JANUARY 18,2022)

#### Fracture Treatments

There are no Fracture Treatments records to display.

Formation	Top
NEVA	890
HASKELL	2380
STALNAKER	2406
LAYTON	2842
CLEVELAND	3162
BIG LIME-OSWEGO	3232
MISSISSIPPI	3466
WOODFORD SHALE	3550
ARBUCKLE	3744

Were open hole logs run? Yes

Date last log run: September 28, 2014

Were unusual drilling circumstances encountered? No

Explanation:

#### Other Remarks

ACIDIZED EXISTING OSWEGO FORMATION

#### FOR COMMISSION USE ONLY

1147712

Status: Accepted

API NO. 071-24466  
OTC PROD. UNIT NO. 071-215443

Oil and Gas Conservation Division  
P.O. Box 52000  
Oklahoma City, OK 73152-2000  
405-522-0577  
OCCCentralProcessing@OCC.OK.GOV



OKLAHOMA  
Corporation  
Commission

Form 1002A  
Rev. 2020

ORIGINAL  
AMENDED (Reason) *Re-Acidize existing Oswego Perfs*

Rule 185-10-3-25

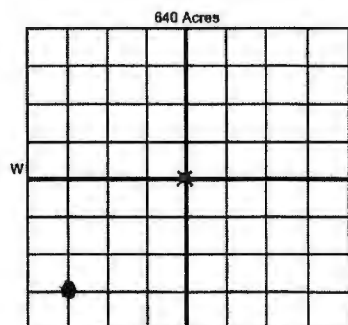
COMPLETION REPORT

TYPE OF DRILLING OPERATION

☒ STRAIGHT HOLE ☐ DIRECTIONAL HOLE ☐ HORIZONTAL HOLE  
☐ SERVICE WELL

If directional or horizontal, see reverse for bottom hole location.

COUNTY	Kay	SEC	9	TWP	28N	RGE	1W	SPUD DATE	9/23/2014
LEASE NAME	Arnold			WELL NO.	1-9			DRLG FINISHED DATE	9/28/2014
C	1/4 SW 1/4 SW 1/4	1/4	FSL	660'	FWL	660'	DATE OF WELL COMPLETION	1/16/2015	
ELEVATION	1070	Ground	1059	Latitude				1st PROD DATE	1/16/2015
OPERATOR NAME	Barber Oil, LC			OTC / OCC OPERATOR NO.	24363				
ADDRESS	8801 South Yale Avenue, Suite 150								
CITY	Tulsa			STATE	OK		ZIP	74137	



COMPLETION TYPE

<input checked="" type="radio"/> SINGLE ZONE	
<input type="radio"/> MULTIPLE ZONE	
<input type="radio"/> COMMINGLED	
LOCATION EXCEPTION ORDER NO.	
MULTIUNIT ORDER NO.	
INCREASED DENSITY ORDER NO.	

CASING & CEMENT (Attach Form 1002C)

TYPE	SIZE	WEIGHT	GRADE	FEET	PSI	SAX	TOP OF CMT
CONDUCTOR							
SURFACE	8 5/8"	24#	J-55	258'	300	240	Surface
INTERMEDIATE							
PRODUCTION	5 1/2"	15.5#	J-55	3797'	1500	300	1916'
LINER							

PACKER @ \_\_\_\_\_ BRAND & TYPE *CIBP* PLUG @ *3440'* TYPE *CIBP* PLUG @ \_\_\_\_\_ TYPE \_\_\_\_\_ TOTAL DEPTH *3804'*

COMPLETION & TEST DATA BY PRODUCING FORMATION

FORMATION	Oswego	Oswego				<i>No Frac</i>
SPACING & SPACING ORDER NUMBER	590497 (160)	590497 (160)				
CLASS: Oil, Gas, Dry, Inj, Disp, Comm Disp, Svc	<i>Gas Oil</i>	<i>Oil</i>				
PERFORATED INTERVALS	3258'-3270'					
	3290'-3300'					
	3322'-3330'					
ACID/VOLUME	1500 gals	6000 gals				
FRACTURE TREATMENT (Fluids/Prop Amounts)	<i>No</i>	<i>Yes just with acid</i>				

INITIAL TEST DATA

INITIAL TEST DATE	12/23/2014	1/21/2022			
OIL-BBL/DAY	1	2.9			
OIL-GRAVITY (API)	38	38			
GAS-MCF/DAY	40	0			
GAS-OIL RATIO CU FT/BBL	40000	0			
WATER-BBL/DAY	2	140			
PUMPING OR FLOWING	Pumping	Pumping			
INITIAL SHUT-IN PRESSURE	900	N/A			
CHOKE SIZE	N/A	N/A			
FLOW TUBING PRESSURE	N/A	N/A			

A record of the formations drilled through, and pertinent remarks are presented on the reverse. I declare that I have knowledge of the contents of this report and am authorized by my organization to make this report, which was prepared by me or under my supervision and direction, with the data and facts stated herein to be true, correct, and complete to the best of my knowledge and belief.

*Barbara Courtney*  
SIGNATURE  
8801 South Yale Ave, Suite 150  
ADDRESS  
Tulsa  
CITY  
OK  
STATE  
74137  
ZIP  
3/10/2022  
DATE  
918-638-5951  
PHONE NUMBER  
bcourtney@barberoilo.com  
EMAIL ADDRESS

PLEASE TYPE OR USE BLACK INK ONLY

FORMATION RECORD

Give formation names and tops, if available, or descriptions and thickness of formations drilled through. Show intervals cored or drillstem tested.

NAMES OF FORMATIONS	TOP
Neva	890
Haskell Lime	2,380
Stainaker	2,406
Layton	2,842
Cleveland	3,162
Big Lime/Oswego	3,232
Mississippi	3,466
Woodford Shale	3,550
Arbuckle	3,744

LEASE NAME \_\_\_\_\_

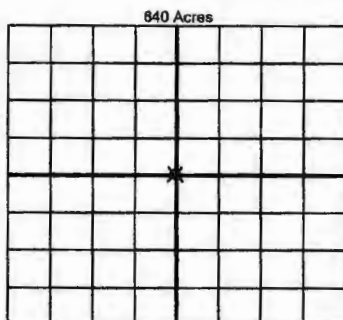
WELL NO. \_\_\_\_\_

FOR COMMISSION USE ONLY	
ITD on file <input type="checkbox"/> YES <input type="checkbox"/> NO	
APPROVED _____	DISAPPROVED _____
2) Reject Codes	
_____	
_____	
_____	
_____	

Were open hole logs run?	<input checked="" type="radio"/> yes <input type="radio"/> no
Date Last log was run	9/28/2014
Was CO <sub>2</sub> encountered?	<input type="radio"/> yes <input checked="" type="radio"/> no at what depths? _____
Was H <sub>2</sub> S encountered?	<input type="radio"/> yes <input checked="" type="radio"/> no at what depths? _____
Were unusual drilling circumstances encountered?	<input type="radio"/> yes <input checked="" type="radio"/> no
If yes, briefly explain below	

Other remarks:

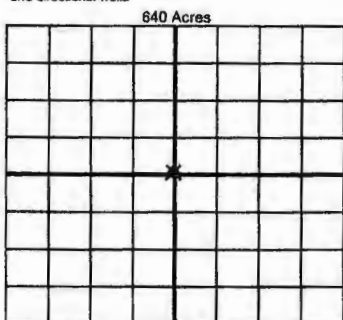
acidized existing Oswego formation



If more than three drainholes are proposed, attach a separate sheet indicating the necessary information.

Direction must be stated in degrees azimuth. Please note, the horizontal drainhole and its end point must be located within the boundaries of the lease or spacing unit.

Directional surveys are required for all drainholes and directional wells



BOTTOM HOLE LOCATION FOR DIRECTIONAL HOLE

SEC	TWP	RGE	COUNTY
1/4	1/4	1/4	1/4
Measured Total Depth		True Vertical Depth	
Feet From 1/4 Sec Lines		BHL From Lease, Unit, or Property Line:	

BOTTOM HOLE LOCATION FOR HORIZONTAL HOLE: (LATERALS)

LATERAL #1			
SEC	TWP	RGE	COUNTY
1/4	1/4	1/4	1/4
Depth of Deviation		Radius of Turn	Direction
Measured Total Depth		True Vertical Depth	Total Length
Feet From 1/4 Sec Lines		BHL From Lease, Unit, or Property Line:	

LATERAL #2			
SEC	TWP	RGE	COUNTY
1/4	1/4	1/4	1/4
Depth of Deviation		Radius of Turn	Direction
Measured Total Depth		True Vertical Depth	Total Length
Feet From 1/4 Sec Lines		BHL From Lease, Unit, or Property Line:	

LATERAL #3			
SEC	TWP	RGE	COUNTY
1/4	1/4	1/4	1/4
Depth of Deviation		Radius of Turn	Direction
Measured Total Depth		True Vertical Depth	Total Length
Feet From 1/4 Sec Lines		BHL From Lease, Unit, or Property Line:	