

Oklahoma Corporation Commission
Oil & Gas Conservation Division
Post Office Box 52000
Oklahoma City, Oklahoma 73152-2000
Rule 165: 10-3-25

Form 1002A

API No.: 35071244020003

Completion Report

Spud Date: September 26, 2011

OTC Prod. Unit No.: 071-206563-0-0000

Drilling Finished Date: October 04, 2011

Amended

1st Prod Date: September 22, 2012

Amend Reason: PERFORATE LAYTON FORMATION, SET BRIDGE PLUG

Completion Date: September 22, 2012

Recomplete Date: November 19, 2021

Drill Type: STRAIGHT HOLE

Well Name: KAUPKE 1-29A

Purchaser/Measurer:

Location: KAY 29 29N 1W
N2 S2 NE NE
1930 FSL 1980 FWL of 1/4 SEC
Derrick Elevation: 1114 Ground Elevation: 1104

First Sales Date:

Operator: BARBER OIL LLC 24363

8801 S YALE AVE STE 150
TULSA, OK 74137-3575

Completion Type		Location Exception		Increased Density	
X	Single Zone	Order No		Order No	
	Multiple Zone	There are no Location Exception records to display.		There are no Increased Density records to display.	
	Commingled				

Casing and Cement							
Type	Size	Weight	Grade	Feet	PSI	SAX	Top of CMT
SURFACE	8 5/8	24	J-55	224	100	200	SURFACE
PRODUCTION	5 1/2	15.5	J-55	3377	1300	185	2100

Liner								
Type	Size	Weight	Grade	Length	PSI	SAX	Top Depth	Bottom Depth
There are no Liner records to display.								

Total Depth: 3385

Packer		Plug	
Depth	Brand & Type	Depth	Plug Type
There are no Packer records to display.		2990	CIBP

Initial Test Data										
Test Date	Formation	Oil BBL/Day	Oil-Gravity (API)	Gas MCF/Day	Gas-Oil Ratio Cu FT/BBL	Water BBL/Day	Pumpin or Flowing	Initial Shut-In Pressure	Choke Size	Flow Tubing Pressure
Nov 19, 2021	LAYTON	0.41	40			140	PUMPING			

Completion and Test Data by Producing Formation			
Formation Name: LAYTON		Code: 405LYTN	Class: OIL
Spacing Orders		Perforated Intervals	
Order No	Unit Size	From	To
NO SPACING		2774	2794
Acid Volumes		Fracture Treatments	
There are no Acid Volume records to display.		There are no Fracture Treatments records to display.	

Formation	Top
TONKAWA	2410
LAYTON SAND	2786
BIG LIME OSWEGO	2986
CLEVELAND	3058
MISSISSIPPI CHAT	3280

Were open hole logs run? Yes
Date last log run: October 03, 2011

Were unusual drilling circumstances encountered? No
Explanation:

Other Remarks
There are no Other Remarks.

FOR COMMISSION USE ONLY	
Status: Accepted	1147677

API NO. 071-24402
OTC PROD. UNIT NO. 071-206563

Oil and Gas Conservation Division
P.O. Box 52000
Oklahoma City, OK 73152-2000
405-522-0577
OCCentralProcessing@OCC.OK.GOV



Form 1002A
Rev. 2020

ORIGINAL AMENDED (Reason) Perf Layton formation set bridge plug

Rule 165:10-3-25

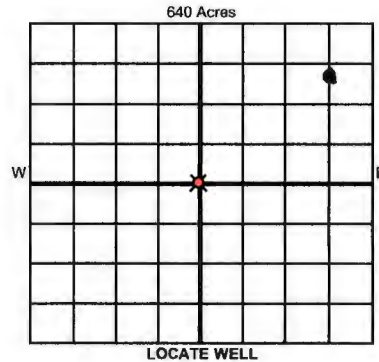
COMPLETION REPORT

TYPE OF DRILLING OPERATION

☒ STRAIGHT HOLE ☐ DIRECTIONAL HOLE ☐ HORIZONTAL HOLE
☐ SERVICE WELL

If directional or horizontal, see reverse for bottom hole location.

COUNTY	Kay	SEC	29	TWP	29N	RGE	1W	SPUD DATE	9/26/2011	
LEASE NAME	Kaupke			WELL NO.	1-29A			DRLG FINISHED DATE	10/4/2011	
N/2 1/4 S/2 1/4 NE 1/4 NE 1/4	FSL	<input checked="" type="checkbox"/> 1930'	FWL	<input checked="" type="checkbox"/> 1980'	DATE OF WELL COMPLETION	9/22/2012			1st PROD DATE	9/22/2012
ELEVATION Derrick FL	1114	Ground	1104	Latitude				Longitude		
OPERATOR NAME	Barber Oil, LC			OTC / OCC OPERATOR NO.	24363					
ADDRESS	8801 South Yale Avenue, Suite 150									
CITY	Tulsa			STATE	OK		ZIP	74137		



COMPLETION TYPE

<input checked="" type="radio"/> SINGLE ZONE	
<input type="radio"/> MULTIPLE ZONE	
<input type="radio"/> COMMINGLED	
LOCATION EXCEPTION ORDER NO.	
MULTIUNIT ORDER NO.	
INCREASED DENSITY ORDER NO.	

CASING & CEMENT (Attach Form 1002C)

TYPE	SIZE	WEIGHT	GRADE	FEET	PSI	SAX	TOP OF CMT
CONDUCTOR							
SURFACE	8 5/8"	24#	J-55	224.5'	100	200	Surface
INTERMEDIATE							
PRODUCTION	5 1/2"	15.5#	J-55	3377'	1300	185	2100'
LINER							

PACKER @ BRAND & TYPE QIBP PLUG @ 2990' TYPE CIBP PLUG @ TYPE TOTAL DEPTH 3385'

COMPLETION & TEST DATA BY PRODUCING FORMATION

FORMATION	Layton					No Fac
SPACING & SPACING ORDER NUMBER	no spacing lease basis					
CLASS: Oil, Gas, Dry, Inj, Disp, Comm Disp, Svc	Oil					
PERFORATED INTERVALS	2774'-2794'					
ACID/VOLUME						
FRACTURE TREATMENT (Fluids/Prop Amounts)						

Min Gas Allowable (165:10-17-7)

☐

OR

Oil Allowable (165:10-13-3)

Purchaser/Measurer

First Sales Date

INITIAL TEST DATA

INITIAL TEST DATE	11/19/2021				
OIL-BBL/DAY	.41				
OIL-GRAVITY (API)	40				
GAS-MCF/DAY	0				
GAS-OIL RATIO CU FT/BBL	0				
WATER-BBL/DAY	140				
PUMPING OR FLOWING	Pump				
INITIAL SHUT-IN PRESSURE					
CHOKE SIZE					
FLOW TUBING PRESSURE					

RECEIVED

MAR 07 2022

OKLAHOMA CORPORATION COMMISSION

A record of the formations drilled through, and pertinent remarks are presented on the reverse. I declare that I have knowledge of the contents of this report and am authorized by my organization to make this report, which was prepared by me or under my supervision and direction, with the data and facts stated herein to be true, correct, and complete to the best of my knowledge and belief.

Barbara Courtney
SIGNATURE
8801 South Yale Ave, Suite 150
ADDRESS
Tulsa
CITY
OK
STATE
74137
ZIP
3/3/2022
DATE
918-638-5951
PHONE NUMBER
bcourtney@barberoilo.com
EMAIL ADDRESS

PLEASE TYPE OR USE BLACK INK ONLY
FORMATION RECORD

Give formation names and tops, if available, or descriptions and thickness of formations drilled through. Show intervals cored or drillstem tested.

LEASE NAME _____

WELL NO. _____

NAMES OF FORMATIONS	TOP
Tonkawa	2,410
Layton Sand	2,786
Big Lime Oswego	2,986
Cleveland	3,058
Mississippi Chat	3,280

FOR COMMISSION USE ONLY

ITD on file ☐ YES ☐ NO

APPROVED _____ DISAPPROVED _____

2) Reject Codes _____

Were open hole logs run? ☒ yes ☐ no

Date Last log was run _____ 10/3/2011

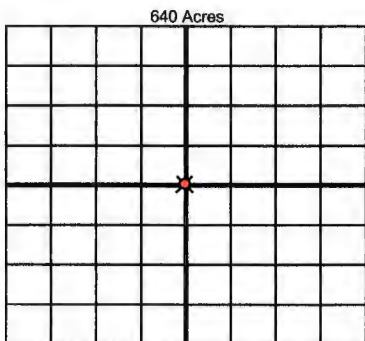
Was CO₂ encountered? ☐ yes ☒ no at what depths? _____

Was H₂S encountered? ☐ yes ☒ no at what depths? _____

Were unusual drilling circumstances encountered? ☐ yes ☒ no

If yes, briefly explain below _____

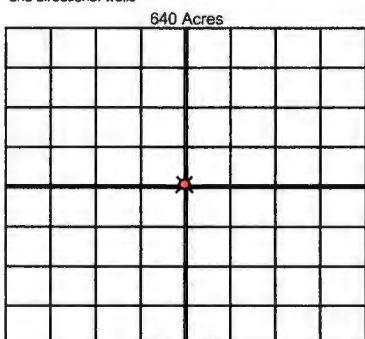
Other remarks: _____



If more than three drainholes are proposed, attach a separate sheet indicating the necessary information.

Direction must be stated in degrees azimuth. Please note, the horizontal drainhole and its end point must be located within the boundaries of the lease or spacing unit.

Directional surveys are required for all drainholes and directional wells



BOTTOM HOLE LOCATION FOR DIRECTIONAL HOLE

SEC	TWP	RGE	COUNTY
1/4	1/4	1/4	1/4
Measured Total Depth		True Vertical Depth	Feet From 1/4 Sec Lines BHL From Lease, Unit, or Property Line:

BOTTOM HOLE LOCATION FOR HORIZONTAL HOLE: (LATERALS)

LATERAL #1

SEC	TWP	RGE	COUNTY
1/4	1/4	1/4	1/4
Depth of Deviation	Radius of Turn	Direction	Total Length
Measured Total Depth	True Vertical Depth	BHL From Lease, Unit, or Property Line:	

LATERAL #2

SEC	TWP	RGE	COUNTY
1/4	1/4	1/4	1/4
Depth of Deviation	Radius of Turn	Direction	Total Length
Measured Total Depth	True Vertical Depth	BHL From Lease, Unit, or Property Line:	

LATERAL #3

SEC	TWP	RGE	COUNTY
1/4	1/4	1/4	1/4
Depth of Deviation	Radius of Turn	Direction	Total Length
Measured Total Depth	True Vertical Depth	BHL From Lease, Unit, or Property Line:	