

Oklahoma Corporation Commission
Oil & Gas Conservation Division
Post Office Box 52000
Oklahoma City, Oklahoma 73152-2000
Rule 165: 10-3-25

Form 1002A

API No.: 35137030420003

Completion Report

Spud Date: August 16, 1946

OTC Prod. Unit No.:

Drilling Finished Date: December 03, 1946

Amended

1st Prod Date: January 05, 1947

Amend Reason: RETURN TO PRODUCTION

Completion Date: January 25, 1947

Recomplete Date: February 03, 2020

Drill Type: STRAIGHT HOLE

Well Name: VESS 205

Purchaser/Measurer:

Location: STEPHENS 30 1S 4W
C NW SW NW
990 FSL 330 FWL of 1/4 SEC
Derrick Elevation: 1062 Ground Elevation: 0

First Sales Date:

Operator: STEPHENS & JOHNSON OPERATING CO 19113
PO BOX 2249
811 6TH ST STE 300
WICHITA FALLS, TX 76307-2249

Completion Type		Location Exception		Increased Density	
X	Single Zone	Order No		Order No	
	Multiple Zone	There are no Location Exception records to display.		There are no Increased Density records to display.	
	Commingled				

Casing and Cement							
Type	Size	Weight	Grade	Feet	PSI	SAX	Top of CMT
SURFACE	13 3/8	48	H-40	170		225	SURFACE
PRODUCTION	8 5/8	36	J-55	6510		800	3670

Liner								
Type	Size	Weight	Grade	Length	PSI	SAX	Top Depth	Bottom Depth
There are no Liner records to display.								

Total Depth: 7630

Packer		Plug	
Depth	Brand & Type	Depth	Plug Type
There are no Packer records to display.		There are no Plug records to display.	

Initial Test Data										
Test Date	Formation	Oil BBL/Day	Oil-Gravity (API)	Gas MCF/Day	Gas-Oil Ratio Cu FT/BBL	Water BBL/Day	Pumpin or Flowing	Initial Shut-In Pressure	Choke Size	Flow Tubing Pressure
Feb 04, 2020	SIMS	14	28			1200	PUMPING			

Completion and Test Data by Producing Formation			
Formation Name: SIMS		Code: 401SIMS	Class: OIL
Spacing Orders		Perforated Intervals	
Order No	Unit Size	From	To
There are no Spacing Order records to display.		6000	6330
Acid Volumes		Fracture Treatments	
There are no Acid Volume records to display.		There are no Fracture Treatments records to display.	

Formation	Top
SIMS	6000

Were open hole logs run? No
Date last log run:

Were unusual drilling circumstances encountered? No
Explanation:

Other Remarks
FILING 1002A - TO GET WELL OFF 1003A LIST. WELL IS ACTIVE - FILED PER PHILIP FISHER, OCC FIELD REPRESENTATIVE

FOR COMMISSION USE ONLY	
Status: Accepted	1146753

API NO. 137-03042
OTC PROD. UNIT NO.

Oil and Gas Conservation Division
P.O. Box 52000
Oklahoma City, OK 73152-2000
405-521-2331
OCCCentralProcessing@OCC.OK.GOV



OKLAHOMA
Corporation
Commission

RECEIVED

Form 1002A
Rev. 2020

AUG - 2 2021

ORIGINAL
AMENDED (Reason)

Return to Production (RTP)

Rule 165:10-3-25

COMPLETION REPORT

TYPE OF DRILLING OPERATION

☒ STRAIGHT HOLE ☐ DIRECTIONAL HOLE ☐ HORIZONTAL HOLE
☒ SERVICE WELL

If directional or horizontal, see reverse for bottom hole location.

COUNTY STEPHENS SEC 30 TWP 1S RGE 4W

LEASE NAME VESS WELL NO. 205

1/4 NW 1/4 SW 1/4 NW 1/4 FSL 990 FNL 330

ELEVATION 1062 Ground Latitude Longitude

OPERATOR NAME STEPHENS & JOHNSON OPER. CO. OTC / OCC OPERATOR NO. 19113

ADDRESS P.O. Box 2249

CITY WICHITA FALLS STATE TX ZIP 76307

SPUD DATE 8-16-1946

DRLG FINISHED DATE 12-3-1946

DATE OF WELL COMPLETION 1-25-1947

1st PROD DATE 2/3/20

RECOMP DATE 2/3/2020

OKLAHOMA CORPORATION COMMISSION

LOCATE WELL

COMPLETION TYPE

☒ SINGLE ZONE
☐ MULTIPLE ZONE
Application Date
☐ COMMINGLED
Application Date
LOCATION EXCEPTION ORDER NO.
MULTIUNIT ORDER NO.
INCREASED DENSITY ORDER NO.

CASING & CEMENT (Attach Form 1002C)

TYPE	SIZE	WEIGHT	GRADE	FEET	PSI	SAX	TOP OF CMT
CONDUCTOR							
SURFACE	13 7/8	48	H40	170		225	SURF
INTERMEDIATE							
PRODUCTION	8 5/8	36	J55	6510		800	3670
LINER							

PACKER @ _____ BRAND & TYPE _____ PLUG @ _____ TYPE _____ PLUG @ _____ TYPE _____ TOTAL DEPTH 7630

COMPLETION & TEST DATA BY PRODUCING FORMATION

401 SIMS

FORMATION	<u>SIMS</u>					
SPACING & SPACING ORDER NUMBER						
CLASS: Oil, Gas, Dry, Inj, Disp, Comm Disp, Svc	<u>OIL</u>					
PERFORATED INTERVALS	<u>6000-6330</u>					
ACID/VOLUME						
FRACTURE TREATMENT (Fluids/Prop Amounts)						

RECEIVED

AUG 02 2021

OKLAHOMA CORPORATION COMMISSION

Min Gas Allowable (165:10-17-7)

OR

Oil Allowable (165:10-13-3)

Purchaser/Measurer

First Sales Date

INITIAL TEST DATA

INITIAL TEST DATE	<u>2/4/20</u>					
OIL-BBL/DAY	<u>14.0</u>					
OIL-GRAVITY (API)	<u>28</u>					
GAS-MCF/DAY	<u>0</u>					
GAS-OIL RATIO CU FT/BBL						
WATER-BBL/DAY	<u>1200</u>					
PUMPING OR FLOWING	<u>Pumping</u>					
INITIAL SHUT-IN PRESSURE						
CHOKE SIZE						
FLOW TUBING PRESSURE						

A record of the formations drilled through, and pertinent remarks are presented on the reverse. I declare that I have knowledge of the contents of this report and am authorized by my organization to make this report, which was prepared by me or under my supervision and direction, with the data and facts stated herein to be true, correct, and complete to the best of my knowledge and belief.

SIGNATURE Bruce Robertson NAME (PRINT OR TYPE) BRUCE ROBERTSON DATE 7/28/21 PHONE NUMBER 940-723-2166
ADDRESS P.O. Box 2249 WICHITA FALLS TX 76307 CITY WICHITA FALLS STATE TX ZIP 76307 EMAIL ADDRESS BROBERTSON@STOC.NET

PLEASE TYPE OR USE BLACK INK ONLY
FORMATION RECORD

Give formation names and tops, if available, or descriptions and thickness of formations drilled through. Show intervals cored or drillstem tested.

NAMES OF FORMATIONS	TOP
Sims	6000

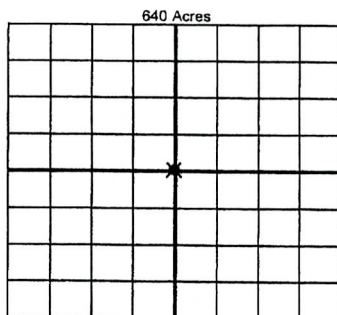
LEASE NAME Vess WELL NO. 205

FOR COMMISSION USE ONLY	
ITD on file <input type="checkbox"/> YES <input type="checkbox"/> NO	
APPROVED <input type="checkbox"/> DISAPPROVED <input type="checkbox"/>	2) Reject Codes

Were open hole logs run?	<input type="radio"/> yes <input checked="" type="radio"/> no
Date Last log was run	
Was CO ₂ encountered?	<input type="radio"/> yes <input checked="" type="radio"/> no at what depths?
Was H ₂ S encountered?	<input type="radio"/> yes <input checked="" type="radio"/> no at what depths?
Were unusual drilling circumstances encountered?	<input type="radio"/> yes <input checked="" type="radio"/> no
If yes, briefly explain below	

Other remarks:

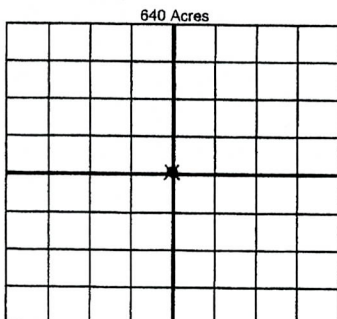
FILING 1002A - TO GET WELL OFF 1003A LIST
WELL IS ACTIVE - FILED PER PHILIP FISHER OCC
FIELD REP.



If more than three drainholes are proposed, attach a separate sheet indicating the necessary information.

Direction must be stated in degrees azimuth.
Please note, the horizontal drainhole and its end point must be located within the boundaries of the lease or spacing unit.

Directional surveys are required for all drainholes and directional wells



BOTTOM HOLE LOCATION FOR DIRECTIONAL HOLE

SEC	TWP	RGE	COUNTY
1/4	1/4	1/4	1/4
Measured Total Depth		True Vertical Depth	
		Feet From 1/4 Sec Lines	
		BHL From Lease, Unit, or Property Line:	

BOTTOM HOLE LOCATION FOR HORIZONTAL HOLE: (LATERALS)

LATERAL #1			
SEC	TWP	RGE	COUNTY
1/4	1/4	1/4	1/4
Depth of Deviation		Radius of Turn	
Measured Total Depth		True Vertical Depth	
		Direction	
		Total Length	
		BHL From Lease, Unit, or Property Line:	

LATERAL #2			
SEC	TWP	RGE	COUNTY
1/4	1/4	1/4	1/4
Depth of Deviation		Radius of Turn	
Measured Total Depth		True Vertical Depth	
		Direction	
		Total Length	
		BHL From Lease, Unit, or Property Line:	

LATERAL #3			
SEC	TWP	RGE	COUNTY
1/4	1/4	1/4	1/4
Depth of Deviation		Radius of Turn	
Measured Total Depth		True Vertical Depth	
		Direction	
		Total Length	
		BHL From Lease, Unit, or Property Line:	