

Oklahoma Corporation Commission
Oil & Gas Conservation Division
Post Office Box 52000
Oklahoma City, Oklahoma 73152-2000
Rule 165: 10-3-25

Form 1002A

API No.: 35109224910001

Completion Report

Spud Date: April 08, 2021

OTC Prod. Unit No.: 109-227290-0-0000

Drilling Finished Date: April 23, 2021

1st Prod Date: July 07, 2021

Completion Date: June 29, 2021

Drill Type: HORIZONTAL HOLE

Min Gas Allowable: Yes

Well Name: WINTERFELL 1304 09-33 3BH

Purchaser/Measurer: SUPERIOR PIPELINE

Location: OKLAHOMA 9 13N 4W
SW SW SW NE
2448 FNL 2415 FEL of 1/4 SEC
Latitude: 35.6168514 Longitude: -97.6285783
Derrick Elevation: 1150 Ground Elevation: 1132

First Sales Date: 08/02/2021

Operator: REVOLUTION RESOURCES LLC 24162

14301 CALIBER DR STE 110
OKLAHOMA CITY, OK 73134-1016

Completion Type		Location Exception		Increased Density	
X	Single Zone	Order No		Order No	
	Multiple Zone	There are no Location Exception records to display.		There are no Increased Density records to display.	
	Commingled				

Casing and Cement							
Type	Size	Weight	Grade	Feet	PSI	SAX	Top of CMT
CONDUCTOR	20	94	J-55	98			SURFACE
SURFACE	9.625	36	J-55	920		300	SURFACE
PRODUCTION	7	29	P-110	7535		225	5075

Liner								
Type	Size	Weight	Grade	Length	PSI	SAX	Top Depth	Bottom Depth
LINER	4.5	13.5	P-110	10037	0	0	7448	17485

Total Depth: 17555

Packer	
Depth	Brand & Type
There are no Packer records to display.	

Plug	
Depth	Plug Type
There are no Plug records to display.	

Initial Test Data

Test Date	Formation	Oil BBL/Day	Oil-Gravity (API)	Gas MCF/Day	Gas-Oil Ratio Cu FT/BBL	Water BBL/Day	Pumpin or Flowing	Initial Shut-In Pressure	Choke Size	Flow Tubing Pressure
Jul 12, 2021	HUNTON	588	40	505	858	449	PUMPING			

Completion and Test Data by Producing Formation

Formation Name: HUNTON

Code: 269HNTN

Class: OIL

Spacing Orders

Order No	Unit Size
20212	UNIT

Perforated Intervals

From	To
There are no Perf. Intervals records to display.	

Acid Volumes

208,320 GALLONS ACID, 64,385 BARRELS WATER

Fracture Treatments

There are no Fracture Treatments records to display.

Formation	Top
OSWEGO	6479
BARTLESVILLE	6701
WOODFORD	6760
HUNTON	6765

Were open hole logs run? No

Date last log run:

Were unusual drilling circumstances encountered? No

Explanation:

Other Remarks

THIS WELL IS AN OPEN HOLE COMPLETION FROM THE BOTTOM OF THE 7" CASING AT 7,535' TO TOTAL DEPTH AT 17,555'. THE 4-1/2" LINER IS NOT CEMENTED.

OCC - FORMERLY PERMITTED AS TYRION 1304 09-21 3BH.

Lateral Holes

Sec: 33 TWP: 14N RGE: 4W County: OKLAHOMA

SE SW SE NW

2377 FNL 1910 FWL of 1/4 SEC

Depth of Deviation: 6220 Radius of Turn: 1423 Direction: 346 Total Length: 8454

Measured Total Depth: 17555 True Vertical Depth: 6825 End Pt. Location From Release, Unit or Property Line: 3450

FOR COMMISSION USE ONLY

Status: Accepted

1146783

API NO. 109-22491X
OTC PROD.
UNIT NO. 109-227290-0-1000

(PLEASE TYPE OR USE BLACK INK ONLY)

OKLAHOMA CORPORATION COMMISSION

Oil & Gas Conservation Division

Post Office Box 52000

Oklahoma City, Oklahoma 73152-2000

Rule 165:10-3-25

Form 1002A

Rev. 2009

☒ ORIGINAL
☐ AMENDED (Reason) _____

COMPLETION REPORT

TYPE OF DRILLING OPERATION

☐ STRAIGHT HOLE ☐ DIRECTIONAL HOLE ☒ HORIZONTAL HOLE
☐ SERVICE WELL

If directional or horizontal, see reverse for bottom hole location.

COUNTY OKLAHOMA SEC 09 TWP 13N RGE 4W
LEASE NAME WINTERFELL 1304 09-33 WELL NO. 3BH
SW 1/4 SW 1/4 SW 1/4 NE 1/4 FSL OF 192' FWL OF 225'
ELEVATION 1150' Ground 1132' Latitude (if known) 35.6168514 Longitude (if known) -97.6285783
OPERATOR NAME REVOLUTION RESOURCES LLC OTC/OCC OPERATOR NO. 24162
ADDRESS 14301 CALIBER DR SUITE 110
CITY OKLAHOMA CITY STATE OK ZIP 73134

SPUD DATE 4/8/2021
DRLG FINISHED DATE 4/23/2021
DATE OF WELL COMPLETION 6/29/2021
1st PROD DATE 7/7/2021
RECOMP DATE
Longitude (if known) -97.6285783

640 Acres
W X E
LOCATE WELL

COMPLETION TYPE

☒ SINGLE ZONE
☐ MULTIPLE ZONE
Application Date
COMMINGLED
Application Date
LOCATION EXCEPTION
ORDER NO.
INCREASED DENSITY
ORDER NO.

CASING & CEMENT (Form 1002C must be attached)

TYPE	SIZE	WEIGHT	GRADE	FEET	PSI	SAX	TOP OF CMT
CONDUCTOR	20	94	J-55	98'			SURF
SURFACE	9.625	36	J-55	920'		300	SURF
INTERMEDIATE	7	29	P-110	7535'		225	5075 CALC
PRODUCTION							
LINER	4.5	13.5	P-110	7448'-17485'	OPEN	HOLE	NA
TOTAL DEPTH							17,555

PACKER @ _____ BRAND & TYPE _____ PLUG @ _____ TYPE _____ PLUG @ _____ TYPE _____
PACKER @ _____ BRAND & TYPE _____ PLUG @ _____ TYPE _____ PLUG @ _____ TYPE _____

COMPLETION & TEST DATA BY PRODUCING FORMATION

FORMATION HUNTON
SPACING & SPACING ORDER NUMBER 20212 (unit)
CLASS: Oil, Gas, Dry, Inj, Disp, Comm Disp, Svc OIL
PERFORATED INTERVALS OPENHOLE
COMPLETION
ACID/VOLUME 208,320 GAL ACID
64,385 BBL WATER
FRACTURE TREATMENT (Fluids/Prop Amounts)

RECEIVED
AUG 11 2021
OKLAHOMA CORPORATION
COMMISSION

INITIAL TEST DATA
☒ Min Gas Allowable (165:10-17-7) OR
☐ Oil Allowable (165:10-13-3)
Gas Purchaser/Measurer Superior Pipeline
First Sales Date 8/2/2021

INITIAL TEST DATE 7/12/2021
OIL-BBL/DAY 588
OIL-GRAVITY (API) 40
GAS-MCF/DAY 505
GAS-OIL RATIO CU FT/BBL 858
WATER-BBL/DAY 449
PUMPING OR FLOWING PUMPING
INITIAL SHUT-IN PRESSURE
CHOKE SIZE
FLOW TUBING PRESSURE

A record of the formations drilled through, and pertinent remarks are presented on the reverse. I declare that I have knowledge of the contents of this report and am authorized by my organization to make this report, which was prepared by me or under my supervision and direction, with the data and facts stated herein to be true, correct, and complete to the best of my knowledge and belief.
SIGNATURE JUSTIN LUNDQUIST
14301 Caliber Dr. Suite 110 Oklahoma City OK 73134
ADDRESS CITY STATE ZIP
8/6/2021 405-256-4393
DATE PHONE NUMBER
JustinL@revolutionresources.com
EMAIL ADDRESS

PLEASE TYPE OR USE BLACK INK ONLY
FORMATION RECORD

Give formation names and tops, if available, or descriptions and thickness of formations drilled through. Show intervals cored or drillstem tested.

LEASE NAME WINTERFELL 1304 09-33 WELL NO. 3BH

NAMES OF FORMATIONS	TOP
OSWEGO	6479'
BARTLESVILLE	6701'
WOODFORD	6760'
HUNTON	6765'

FOR COMMISSION USE ONLY

ITD on file ☐ YES ☐ NO

APPROVED _____ DISAPPROVED _____

2) Reject Codes _____

Were open hole logs run? _____ yes ☒ no

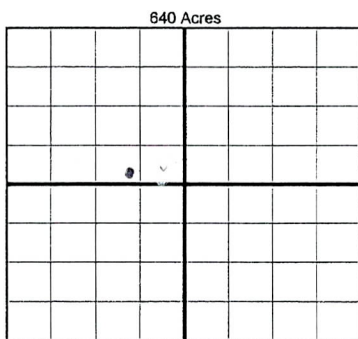
Date Last log was run _____

Was CO₂ encountered? _____ yes ☒ no at what depths? _____

Was H₂S encountered? _____ yes ☒ no at what depths? _____

Were unusual drilling circumstances encountered? _____ yes ☒ no
If yes, briefly explain below _____

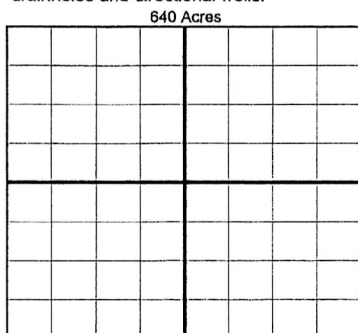
Other remarks: This well is an openhole completion from the bottom of the 7" casing at 7535' to TD at 17,555'. The 4-1/2" liner is not cemented.



If more than three drainholes are proposed, attach a separate sheet indicating the necessary information.

Direction must be stated in degrees azimuth. Please note, the horizontal drainhole and its end point must be located within the boundaries of the lease or spacing unit.

Directional surveys are required for all drainholes and directional wells.



BOTTOM HOLE LOCATION FOR DIRECTIONAL HOLE

SEC	TWP	RGE	COUNTY
Spot Location		Feet From 1/4 Sec Lines	FSL
1/4	1/4	1/4	1/4
Measured Total Depth		True Vertical Depth	BHL From Lease, Unit, or Property Line:

BOTTOM HOLE LOCATION FOR HORIZONTAL HOLE: (LATERALS)

LATERAL #1

SEC 33 TWP 14N RGE 04W COUNTY OKLAHOMA

Spot Location SW 1/4 SE 1/4 SE 1/4 NW 1/4

Feet From 1/4 Sec Lines FSL 245' FWL 2005'

Depth of Deviation 6220' Radius of Turn 1423' Direction 346355 AZM Total Length 8454'

Measured Total Depth 17555' True Vertical Depth 6857' 6825' BHL From Lease, Unit, or Property Line: 3450' FROM UNIT BOUNDARY

calculated by OCC using x-y coordinates

LATERAL #2

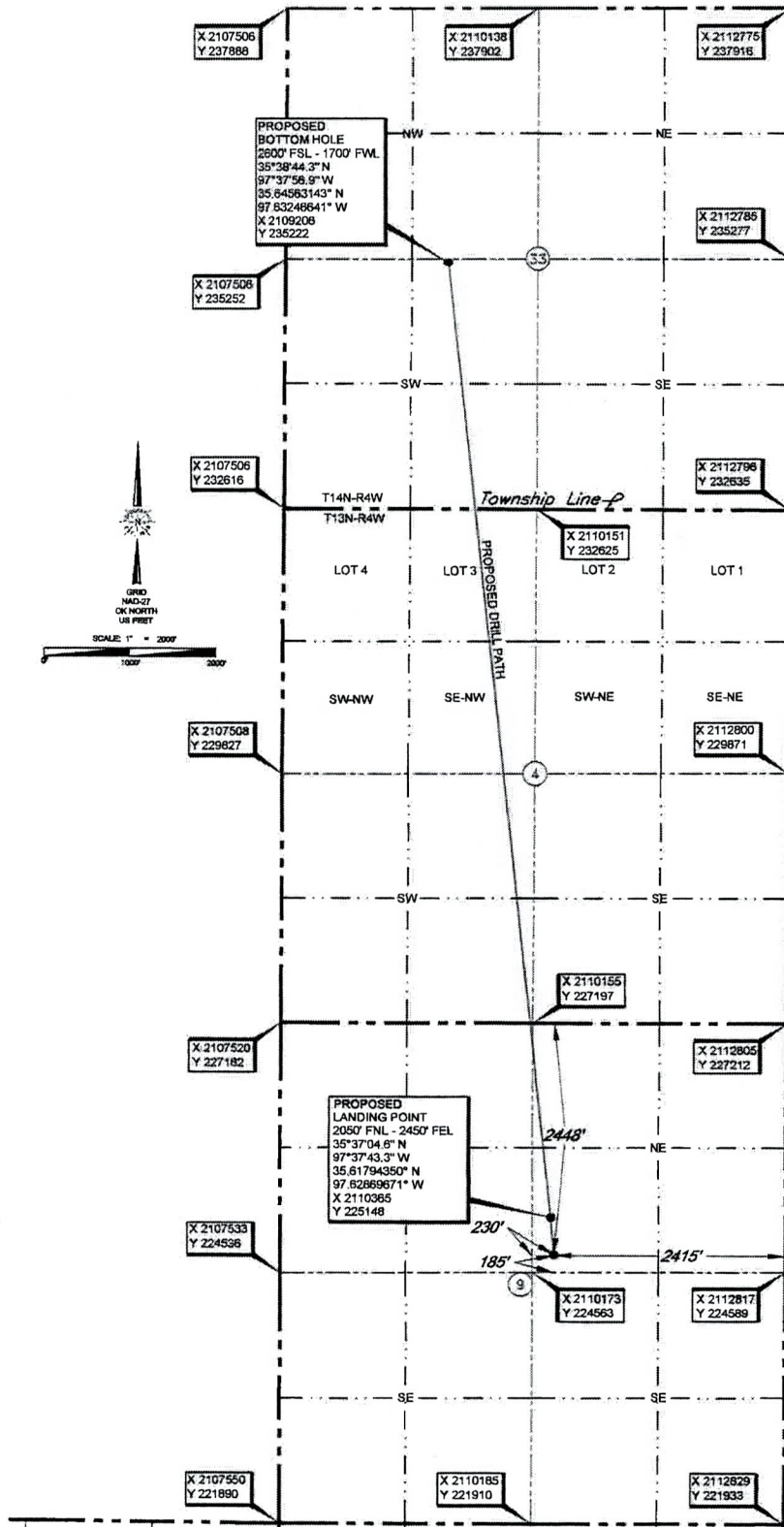
SEC	TWP	RGE	COUNTY
Spot Location		Feet From 1/4 Sec Lines	FSL
1/4	1/4	1/4	1/4
Depth of Deviation		Radius of Turn	Direction
Measured Total Depth		True Vertical Depth	BHL From Lease, Unit, or Property Line:

LATERAL #3

SEC	TWP	RGE	COUNTY
Spot Location		Feet From 1/4 Sec Lines	FSL
1/4	1/4	1/4	1/4
Depth of Deviation		Radius of Turn	Direction
Measured Total Depth		True Vertical Depth	BHL From Lease, Unit, or Property Line:

OKLAHOMA County, Oklahoma
2448' FNL - 2415' FEL Section 9 Township 13N Range 4W I.M.

API: 109-22491A



NOTES:

- The information shown herein is for construction purposes ONLY.
- Location is not within a flood zone.
- Landing Point, Bottom Hole and Drill Path information provided by client listed, not surveyed.

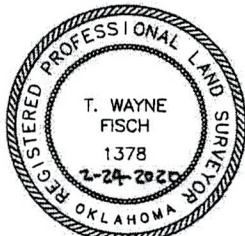
DATUM: NAD-27
LAT: 35°37'00.7" N
LONG: 97°37'42.9" W
LAT: 35.61685143° N
LONG: 97.62857836° W
STATE PLANE
COORDINATES (US FEET):
ZONE: OK NORTH
X: X 2110401
Y: Y 224751

(This information was gathered with a GPS receiver with ±1 foot Horiz./Vert. accuracy.)

CERTIFICATE:

I, T. Wayne Fisch an Oklahoma Licensed Land Surveyor and an authorized agent of Topographic Land Surveyors, do hereby certify to the information shown herein.

T. Wayne Fisch
Oklahoma Reg. No. 1378



REVISION ☒ 1

PROJECT # 131794

DATE OF DRAWING: FEBRUARY 20, 2020 KH

DATE STAKED: FEBRUARY 19, 2020

OPERATOR: REVOLUTION RESOURCES

LEASE NAME: Winterfell 1304 09-33

WELL NO: 3BH

TOPOGRAPHY & VEGETATION: Location fell in sloping pasture

GOOD DRILL SITE? Yes REFERENCE STAKES OR ALTERNATE LOCATION

BEST ACCESSIBILITY TO LOCATION: From North off county road STAKES SET: None

DISTANCE & DIRECTION: The junction of MacArthur Boulevard & 150th St, being the Northeast Corner of Section 9-T13N-R4W.