

Oklahoma Corporation Commission
Oil & Gas Conservation Division
Post Office Box 52000
Oklahoma City, Oklahoma 73152-2000
Rule 165: 10-3-25

Form 1002A

API No.: 3508722230001

Completion Report

Spud Date: April 20, 2019

OTC Prod. Unit No.: 087-225951-0-0000

Drilling Finished Date: May 07, 2019

1st Prod Date: August 08, 2019

Completion Date: August 08, 2019

Drill Type: HORIZONTAL HOLE

Min Gas Allowable: Yes

Well Name: LEFLORE 1015 2H

Purchaser/Measurer: ENABLE GATHERING &
PROCESSING

First Sales Date: 08/08/2019

Location: MCCLAIN 10 8N 4W
NW NW NE NE
260 FNL 993 FEL of 1/4 SEC
Latitude: 35.188683789 Longitude: -97.602977912
Derrick Elevation: 0 Ground Elevation: 1291

Operator: EOG RESOURCES INC 16231

3817 NW EXPRESSWAY STE 500
OKLAHOMA CITY, OK 73112-1483

Completion Type		Location Exception		Increased Density	
X	Single Zone	Order No		Order No	
	Multiple Zone	700255		700757	
	Commingled			700758	

Casing and Cement							
Type	Size	Weight	Grade	Feet	PSI	SAX	Top of CMT
SURFACE	9 5/8	36	J-55	1048		420	SURFACE
PRODUCTION	5 1/2	20	P-110	19672		2600	6684

Liner								
Type	Size	Weight	Grade	Length	PSI	SAX	Top Depth	Bottom Depth
There are no Liner records to display.								

Total Depth: 19672

Packer	
Depth	Brand & Type
There are no Packer records to display.	

Plug	
Depth	Plug Type
There are no Plug records to display.	

Initial Test Data

Test Date	Formation	Oil BBL/Day	Oil-Gravity (API)	Gas MCF/Day	Gas-Oil Ratio Cu FT/BBL	Water BBL/Day	Pumpin or Flowing	Initial Shut-In Pressure	Choke Size	Flow Tubing Pressure
Aug 11, 2019	WOODFORD	96	40	108	1125	5225	FLOWING	1200	128	449

Completion and Test Data by Producing Formation

Formation Name: WOODFORD

Code: 319WDFD

Class: OIL

Spacing Orders

Order No	Unit Size
616337	640
627628	640
700254	MULTIUNIT

Perforated Intervals

From	To
9534	19672

Acid Volumes

1,666 GALLONS TOTAL ACID

Fracture Treatments

15,881/124 TOTAL FLUID, 25,233,360 POUNDS TOTAL PROPPANT

Formation	Top
WOODFORD	9367

Were open hole logs run? No

Date last log run:

Were unusual drilling circumstances encountered? No

Explanation:

Other Remarks

OCC - THIS DOCUMENT IS ACCEPTED BASED ON THE DATA SUBMITTED NEITHER THE FINAL LOCATION EXCEPTION NOR THE FINAL MULTIUNIT ORDERS HAVE BEEN ISSUED.

Lateral Holes

Sec: 15 TWP: 8N RGE: 4W County: MCCLAIN

SE SW SE SE

252 FSL 972 FEL of 1/4 SEC

Depth of Deviation: 8891 Radius of Turn: 871 Direction: 176 Total Length: 9910

Measured Total Depth: 19672 True Vertical Depth: 9407 End Pt. Location From Release, Unit or Property Line: 252

FOR COMMISSION USE ONLY

Status: Accepted

1143777

<p>A record of the formations drilled through, and pertinent remarks are presented on the reverse. I declare that I have knowledge of the contents of this report and am authorized by my organization to make this report, which was prepared by me or under my supervision and direction, with the data and facts stated herein to be true, correct, and complete to the best of my knowledge and belief.</p>				
<p><u>Joni Reeder</u> SIGNATURE</p>		<p><u>Joni Reeder</u> NAME (PRINT OR TYPE)</p>		<p><u>8/27/19</u> <u>405-246-3100</u> DATE PHONE NUMBER</p>
<p><u>3817 NW Expressway, Suite 500</u> ADDRESS</p>	<p><u>Oklahoma City</u> CITY</p>	<p><u>OK</u> STATE</p>	<p><u>73112</u> ZIP</p>	<p><u>joni_reeder@eogresources.com</u> EMAIL ADDRESS</p>

PLEASE TYPE OR USE BLACK INK ONLY
FORMATION RECORD

Give formation names and tops, if available, or descriptions and thickness of formations drilled through. Show intervals cored or drillstem tested.

LEASE NAME

LEFLORE 1015

WELL NO.

2H

NAMES OF FORMATIONS	TOP
WOODFORD MD	9,367

FOR COMMISSION USE ONLY

ITD on file ☐ YES ☐ NO

APPROVED _____ DISAPPROVED _____

2) Reject Codes

Were open hole logs run? _____ yes ☒ no

Date Last log was run _____ N/A

Was CO₂ encountered? _____ yes ☒ no at what depths? _____

Was H₂S encountered? _____ yes ☒ no at what depths? _____

Were unusual drilling circumstances encountered? _____ yes ☒ no

If yes, briefly explain below: _____

Other remarks:

640 Acres

If more than three drainholes are proposed, attach a separate sheet indicating the necessary information.

Direction must be stated in degrees azimuth.

Please note, the horizontal drainhole and its end point must be located within the boundaries of the lease or spacing unit.

Directional surveys are required for all drainholes and directional wells.

640 Acres

BOTTOM HOLE LOCATION FOR DIRECTIONAL HOLE

SEC	TWP	RGE	COUNTY
Spot Location	1/4	1/4	1/4
Measured Total Depth	True Vertical Depth	BHL From Lease, Unit, or Property Line:	

BOTTOM HOLE LOCATION FOR HORIZONTAL HOLE: (LATERALS)

LATERAL #1

SEC 15 TWP 8N RGE 4W COUNTY MCCLAIN

Spot Location SE 1/4 SW 1/4 SE 1/4 SE 1/4 Feet From 1/4 Sec Lines FSL 252 FEL 972

Depth of Deviation 8,891 Radius of Turn 871 Direction 176 Total Length 9,910

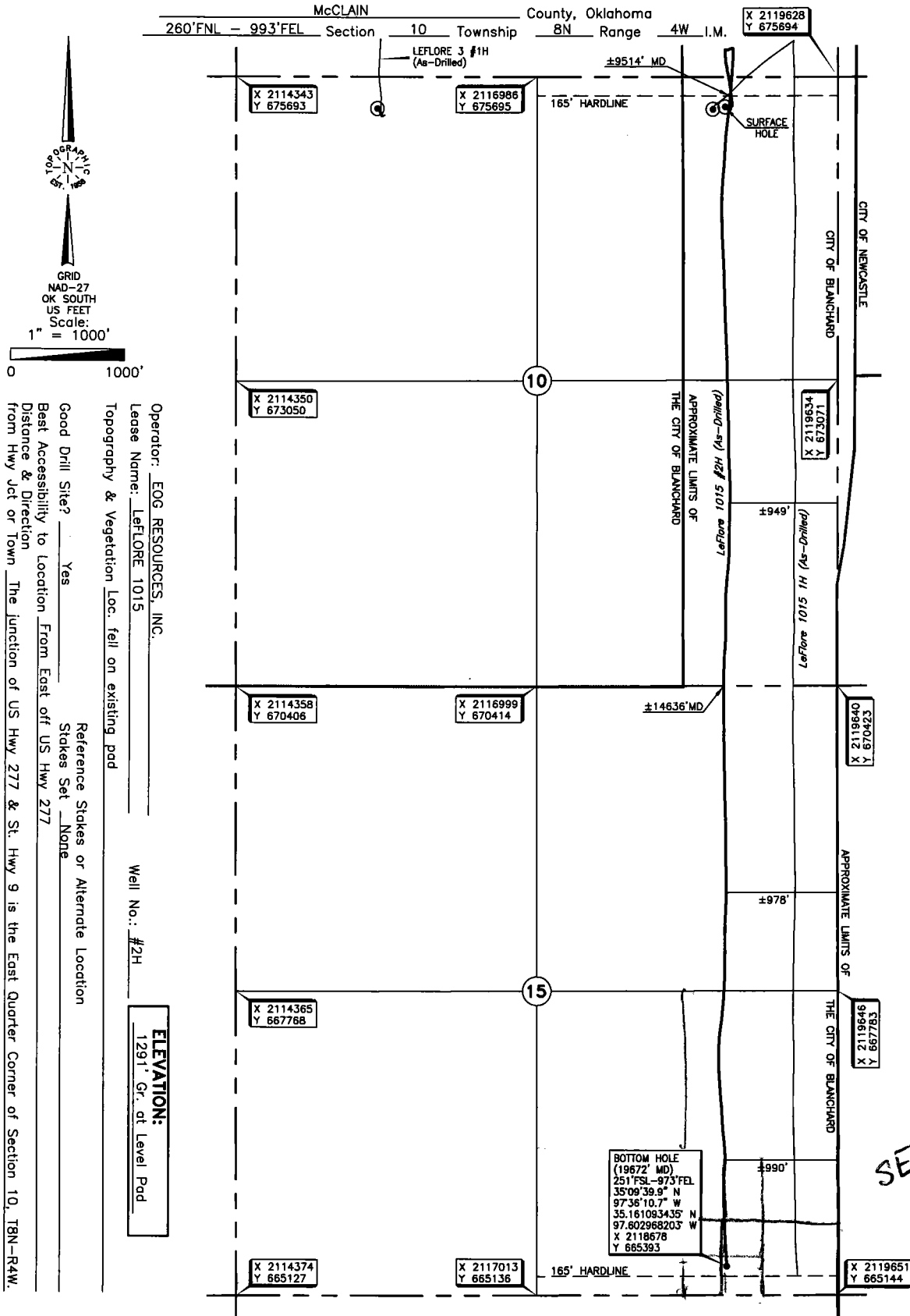
Measured Total Depth 19,672 True Vertical Depth 9,407 BHL From Lease, Unit, or Property Line: 252

LATERAL #2

SEC	TWP	RGE	COUNTY
Spot Location	1/4	1/4	1/4
Depth of Deviation	Radius of Turn	Direction	Total Length
Measured Total Depth	True Vertical Depth	BHL From Lease, Unit, or Property Line:	

LATERAL #3

SEC	TWP	RGE	COUNTY
Spot Location	1/4	1/4	1/4
Depth of Deviation	Radius of Turn	Direction	Total Length
Measured Total Depth	True Vertical Depth	BHL From Lease, Unit, or Property Line:	



DATUM: NAD-27
LAT: 35°11'19.3" N
LONG: 97°36'10.7" W
LAT: 35.188683789° N
LONG: 97.602977912° W
STATE PLANE
COORDINATES (US FEET):
ZONE: OK SOUTH
X: 2118636
Y: 675435

Project # 124417 Date of Drawing: May 09, 2019
Date Staked: Mar. 21, 2019 JP

FINAL AS-DRILLED PLAT

AS-DRILLED INFORMATION
FURNISHED BY EOG RESOURCES, INC.