

Oklahoma Corporation Commission  
Oil & Gas Conservation Division  
Post Office Box 52000  
Oklahoma City, Oklahoma 73152-2000  
Rule 165: 10-3-25

Form 1002A

API No.: 35003214650003

**Completion Report**

Spud Date: November 26, 1987

OTC Prod. Unit No.:

Drilling Finished Date: December 07, 1987

**Amended**

1st Prod Date: February 05, 1988

Amend Reason: RECOMPLETED IN CHEROKEE SANDS

Completion Date: March 14, 1988

Recomplete Date: January 28, 2019

**Drill Type: STRAIGHT HOLE**

Well Name: PATSY JO (CHEROKITA MISENER UNIT 1) 1

Purchaser/Measurer:

Location: ALFALFA 14 27N 9W  
C SW NW  
660 FSL 660 FWL of 1/4 SEC  
Derrick Elevation: 1347 Ground Elevation: 1338

First Sales Date:

Operator: MARJO OPERATING MID-CONTINENT LLC 23610  
PO BOX 729  
427 S BOSTON AVE STE 240  
TULSA, OK 74101-0729

Completion Type		Location Exception		Increased Density	
X	Single Zone	Order No		Order No	
	Multiple Zone	688513		668571	
	Commingled				

Casing and Cement							
Type	Size	Weight	Grade	Feet	PSI	SAX	Top of CMT
CONDUCTOR	16			112		10	SURFACE
SURFACE	8 5/8	24 & 32	K-55	593	1000	335	SURFACE
PRODUCTION	5 1/2	15.5	K-55	6111	1000	265	4962

Liner								
Type	Size	Weight	Grade	Length	PSI	SAX	Top Depth	Bottom Depth
There are no Liner records to display.								

**Total Depth: 6115**

Packer		Plug	
Depth	Brand & Type	Depth	Plug Type
There are no Packer records to display.		5690	CIBP

Initial Test Data
-------------------

Test Date	Formation	Oil BBL/Day	Oil-Gravity (API)	Gas MCF/Day	Gas-Oil Ratio Cu FT/BBL	Water BBL/Day	Pumpin or Flowing	Initial Shut-In Pressure	Choke Size	Flow Tubing Pressure
Feb 01, 2019	CHEROKEE SANDS					79	SWABBIN	40		

Completion and Test Data by Producing Formation									
Formation Name: MISENER				Code: 319MSNR			Class: DRY		
Spacing Orders				Perforated Intervals					
Order No		Unit Size		From			To		
324669		40		5937			5956		
Acid Volumes				Fracture Treatments					
NONE				NONE					

Formation Name: CHEROKEE SANDS				Code: 404CHSDS			Class: DRY		
Spacing Orders				Perforated Intervals					
Order No		Unit Size		From			To		
35814		320		5310			5328		
Acid Volumes				Fracture Treatments					
1,000 GALLONS 7 1/2%				NONE					

Formation	Top
PINK LIME	5182
RED FORK	5202
MISSISSIPPI	5342
WOODFORD	5908
MISENER	5937
SIMPSON	6044

Were open hole logs run? Yes
Date last log run: December 06, 1987

Were unusual drilling circumstances encountered? No
Explanation:

Other Remarks
There are no Other Remarks.

FOR COMMISSION USE ONLY
<div>Status: Accepted</div> <div>1143793</div>

API NO. 003-21465  
OTC PROD.  
UNIT NO.

(PLEASE TYPE OR USE BLACK INK ONLY)

OKLAHOMA CORPORATION COMMISSION  
Oil & Gas Conservation Division  
Post Office Box 52000  
Oklahoma City, Oklahoma 73152-2000  
Rule 165:10-3-25

RECEIVED

Form 1002A  
Rev. 2009

SEP 09 2019

OKLAHOMA CORPORATION  
COMMISSION  
640 Acres

☐ ORIGINAL  
☒ AMENDED (Reason)

Recompleted in ~~Red Fork~~ Cherokee Sands

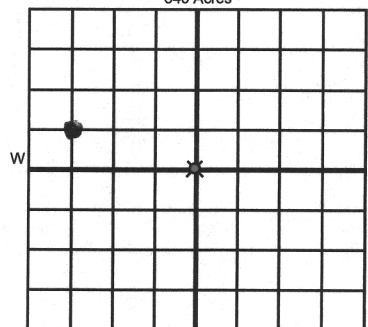
COMPLETION REPORT

TYPE OF DRILLING OPERATION

☒ STRAIGHT HOLE ☐ DIRECTIONAL HOLE ☐ HORIZONTAL HOLE  
☐ SERVICE WELL

If directional or horizontal, see reverse for bottom hole location.

COUNTY	Alfalfa	SEC	14	TWP	27N	RGE	9W	SPUD DATE	11/26/1987
LEASE NAME	Patsy Jo (AKA Cheroquita Misener Unit)			WELL NO.	1	DATE OF WELL COMPLETION	3/14/1988	DRLG FINISHED DATE	12/7/1987
1/4 C 1/4 SW 1/4 NW 1/4	FSL OF 1/4 SEC 660			FWL OF 1/4 SEC 660	1st PROD DATE		2/5/1988	RECOMP DATE	1/28/2019
ELEVATION Derrick FL	1347	Ground	1338	Latitude (if known)		Longitude (if known)			
OPERATOR NAME	Marjo Operating Mid-Continent			OTC / OCC OPERATOR NO.	23610				
ADDRESS	PO Box 729								
CITY	Tulsa			STATE	OK	ZIP	74101-0729		



LOCATE WELL

COMPLETION TYPE

<input checked="" type="checkbox"/> SINGLE ZONE	
<input type="checkbox"/> MULTIPLE ZONE	
Application Date	
<input type="checkbox"/> COMMINGLED	
Application Date	
LOCATION EXCEPTION ORDER NO.	688513
INCREASED DENSITY ORDER NO.	688571

CASING & CEMENT (Attach Form 1002C)

TYPE	SIZE	WEIGHT	GRADE	FEET	PSI	SAX	TOP OF CMT
CONDUCTOR	16"			112		10 yd	surface
SURFACE	8 5/8"	24 & 32	K55	593	1000	335	surface
INTERMEDIATE							
PRODUCTION	5 1/2"	15.5	K55	6111	1000	265	4962
LINER							
				TOTAL DEPTH	6115		

PACKER @ \_\_\_\_\_ BRAND & TYPE \_\_\_\_\_

PLUG @ 5690 TYPE CIBP

PLUG @ \_\_\_\_\_ TYPE \_\_\_\_\_

TOTAL DEPTH 6115

PACKER @ \_\_\_\_\_ BRAND & TYPE \_\_\_\_\_

PLUG @ \_\_\_\_\_ TYPE \_\_\_\_\_

PLUG @ \_\_\_\_\_ TYPE \_\_\_\_\_

COMPLETION & TEST DATA BY PRODUCING FORMATION

319MSNR 404 CHSDS

FORMATION	Misener	Cherokee Sands				No Frac
SPACING & SPACING ORDER NUMBER	324669 / 40 acres	35814 / 320 acres				
CLASS: Oil, Gas, Dry, Inj, Disp, Comm Disp, Svc	Oil Dry below CIBP	Dry				
PERFORATED INTERVALS	5937-5956	5310-5328				
ACID/VOLUME	None	7 1/2%/1000 gal				
FRACTURE TREATMENT (Fluids/Prop Amounts)	none	none				

Min Gas Allowable (165:10-17-7)

Gas Purchaser/Measurer

First Sales Date

INITIAL TEST DATA

INITIAL TEST DATE	3/14/1988	2/1/2019				
OIL-BBL/DAY	278	0				
OIL-GRAVITY (API)	49					
GAS-MCF/DAY	233	0				
GAS-OIL RATIO CU FT/BBL	838					
WATER-BBL/DAY	0	79				
PUMPING OR FLOWING	Flowing	Swabbing				
INITIAL SHUT-IN PRESSURE	900	40				
CHOKE SIZE	15/64					
FLOW TUBING PRESSURE	840					

AS SUBMITTED

A record of the formations drilled through, and pertinent remarks are presented on the reverse. I declare that I have knowledge of the contents of this report and am authorized by my organization to make this report, which was prepared by me or under my supervision and direction, with the data and facts stated herein to be true, correct, and complete to the best of my knowledge and belief.

SIGNATURE	CAROLYN BENNETT	9/3/2019	918-583-0241
PO Box 729	Tulsa OK 74101	carolyn@marjoop.com	
ADDRESS	CITY STATE ZIP	EMAIL ADDRESS	

PLEASE TYPE OR USE BLACK INK ONLY  
FORMATION RECORD

Give formation names and tops, if available, or descriptions and thickness of formations drilled through. Show intervals cored or drillstem tested.

NAMES OF FORMATIONS	TOP
Pink Lime	5182
Red Fork	5202
Mississippi	5342
Woodford	5908
Misener	5937
Simpson	6044

LEASE NAME Patsy Jo (AKA Cherokita Misener Unit)

WELL NO. 1

FOR COMMISSION USE ONLY

ITD on file ☐ YES ☐ NO

APPROVED \_\_\_\_\_ DISAPPROVED \_\_\_\_\_

2) Reject Codes

Were open hole logs run?

☒ yes ☐ no

Date Last log was run

12/6/1987

Was CO<sub>2</sub> encountered?

☐ yes ☒ no at what depths? \_\_\_\_\_

Was H<sub>2</sub>S encountered?

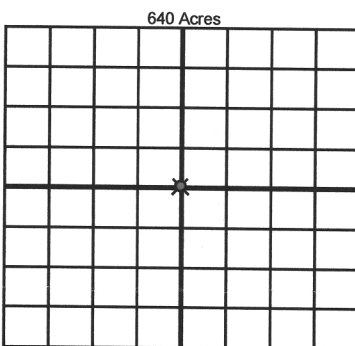
☐ yes ☒ no at what depths? \_\_\_\_\_

Were unusual drilling circumstances encountered?

☐ yes ☒ no

If yes, briefly explain below

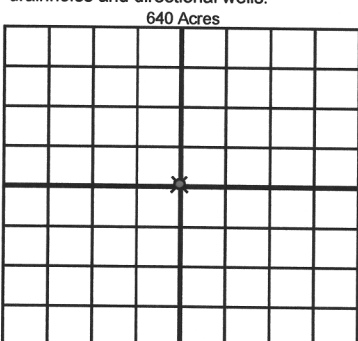
Other remarks:



If more than three drainholes are proposed, attach a separate sheet indicating the necessary information.

Direction must be stated in degrees azimuth. Please note, the horizontal drainhole and its end point must be located within the boundaries of the lease or spacing unit.

Directional surveys are required for all drainholes and directional wells.



BOTTOM HOLE LOCATION FOR DIRECTIONAL HOLE

SEC	TWP	RGE	COUNTY
Spot Location	1/4	1/4	1/4
Measured Total Depth	True Vertical Depth	BHL From Lease, Unit, or Property Line:	

BOTTOM HOLE LOCATION FOR HORIZONTAL HOLE: (LATERALS)

SEC	TWP	RGE	COUNTY
Spot Location	1/4	1/4	1/4
Depth of Deviation	Radius of Turn	Direction	Total Length
Measured Total Depth	True Vertical Depth	BHL From Lease, Unit, or Property Line:	

SEC	TWP	RGE	COUNTY
Spot Location	1/4	1/4	1/4
Depth of Deviation	Radius of Turn	Direction	Total Length
Measured Total Depth	True Vertical Depth	BHL From Lease, Unit, or Property Line:	

SEC	TWP	RGE	COUNTY
Spot Location	1/4	1/4	1/4
Depth of Deviation	Radius of Turn	Direction	Total Length
Measured Total Depth	True Vertical Depth	BHL From Lease, Unit, or Property Line:	