

Oklahoma Corporation Commission  
Oil & Gas Conservation Division  
Post Office Box 52000  
Oklahoma City, Oklahoma 73152-2000  
Rule 165: 10-3-25

Form 1002A

API No.: 35087222310000

**Completion Report**

Spud Date: June 16, 2019

OTC Prod. Unit No.: 087-225968-0-0000

Drilling Finished Date: July 04, 2019

1st Prod Date: August 20, 2019

Completion Date: August 20, 2019

**Drill Type:** HORIZONTAL HOLE

Min Gas Allowable: Yes

Well Name: CURRY 2833 7H

Purchaser/Measurer: ENABLE GATHERING &  
PROCESSING

First Sales Date: 08/20/2019

Location: MCCLAIN 21 8N 4W  
NW SE SW SW  
526 FSL 942 FWL of 1/4 SEC  
Latitude: 35.147316733 Longitude: -97.63194629  
Derrick Elevation: 0 Ground Elevation: 1275

Operator: EOG RESOURCES INC 16231

3817 NW EXPRESSWAY STE 500  
OKLAHOMA CITY, OK 73112-1483

Completion Type		Location Exception		Increased Density	
X	Single Zone	Order No		Order No	
	Multiple Zone	699698		695761	
	Commingled			695763	

Casing and Cement							
Type	Size	Weight	Grade	Feet	PSI	SAX	Top of CMT
SURFACE	9 5/8	36	J-55	1035		420	SURFACE
PRODUCTION	5 1/2	20	P-110	20892		2330	7636

Liner								
Type	Size	Weight	Grade	Length	PSI	SAX	Top Depth	Bottom Depth
There are no Liner records to display.								

**Total Depth: 20892**

Packer	
Depth	Brand & Type
There are no Packer records to display.	

Plug	
Depth	Plug Type
There are no Plug records to display.	

Initial Test Data
-------------------

Test Date	Formation	Oil BBL/Day	Oil-Gravity (API)	Gas MCF/Day	Gas-Oil Ratio Cu FT/BBL	Water BBL/Day	Pumpin or Flowing	Initial Shut-In Pressure	Choke Size	Flow Tubing Pressure
Aug 24, 2019	WOODFORD	441	40	846	1919	5905	FLOWING	1900	128	392

<b>Completion and Test Data by Producing Formation</b>	
Formation Name: WOODFORD	Code: 319WDFD
Class: OIL	

Spacing Orders	
Order No	Unit Size
662474	640
663347	640
699790	MULTIUNIT

Perforated Intervals	
From	To
10644	20822

Acid Volumes	
2,500 7.5% HCL TOTAL ACID	

Fracture Treatments	
19,034,000 GALLONS TOTAL FLUID, 22,942,250 POUNDS TOTAL PROPPANT	

Formation	Top
WOODFORD	10371

Were open hole logs run? No

Date last log run:


Were unusual drilling circumstances encountered? No

Explanation:

<b>Other Remarks</b>
OCC - THIS DOCUMENT IS ACCEPTED BASED ON THE DATA SUBMITTED NEITHER THE FINAL LOCATION EXCEPTION NOR THE FINAL MULTIUNIT ORDERS HAVE BEEN SUBMITTED.

<b>Lateral Holes</b>
Sec: 33 TWP: 8N RGE: 4W County: MCCLAIN  SW SE SW SE  176 FSL 1854 FEL of 1/4 SEC  Depth of Deviation: 9890 Radius of Turn: 1267 Direction: 182 Total Length: 9735  Measured Total Depth: 20892 True Vertical Depth: 9984 End Pt. Location From Release, Unit or Property Line: 176

<b>FOR COMMISSION USE ONLY</b>
1143789
Status: Accepted

A record of the formations drilled through, and pertinent remarks are presented on the reverse. I declare that I have knowledge of the contents of this report and am authorized by my organization to make this report, which was prepared by me or under my supervision and direction, with the data and facts stated herein to be true, correct, and complete to the best of my knowledge and belief.				
 SIGNATURE		JONI REEDER		9/6/2019
8817 NW Expressway, Suite 500		Oklahoma City	OK 73112	DATE PHONE NUMBER
ADDRESS		CITY	STATE ZIP	<a href="mailto:joni_reeder@eogresources.com">joni_reeder@eogresources.com</a>
			EMAIL ADDRESS	

PLEASE TYPE OR USE BLACK INK ONLY  
FORMATION RECORD

Give formation names and tops, if available, or descriptions and thickness of formations drilled through. Show intervals cored or drillstem tested.

LEASE NAME

CURRY 2833

WELL NO.

7H

NAMES OF FORMATIONS	TOP
WOODFORD MD	10,371

FOR COMMISSION USE ONLY

ITD on file ☐ YES ☐ NO

APPROVED DISAPPROVED

2) Reject Codes

Were open hole logs run? ☐ yes ☒ no

Date Last log was run N/A

Was CO<sub>2</sub> encountered? ☐ yes ☒ no at what depths?

Was H<sub>2</sub>S encountered? ☐ yes ☒ no at what depths?

Were unusual drilling circumstances encountered? ☐ yes ☒ no

If yes, briefly explain below:

Other remarks:

640 Acres


If more than three drainholes are proposed, attach a separate sheet indicating the necessary information.

Direction must be stated in degrees azimuth.  
Please note, the horizontal drainhole and its end point must be located within the boundaries of the lease or spacing unit.

Directional surveys are required for all drainholes and directional wells.

640 Acres


BOTTOM HOLE LOCATION FOR DIRECTIONAL HOLE

SEC	TWP	RGE	COUNTY
Spot Location	1/4	1/4	1/4
Measured Total Depth	True Vertical Depth	Feet From 1/4 Sec Lines	FSL
		BHL From Lease, Unit, or Property Line:	FWL

BOTTOM HOLE LOCATION FOR HORIZONTAL HOLE: (LATERALS)

LATERAL #1

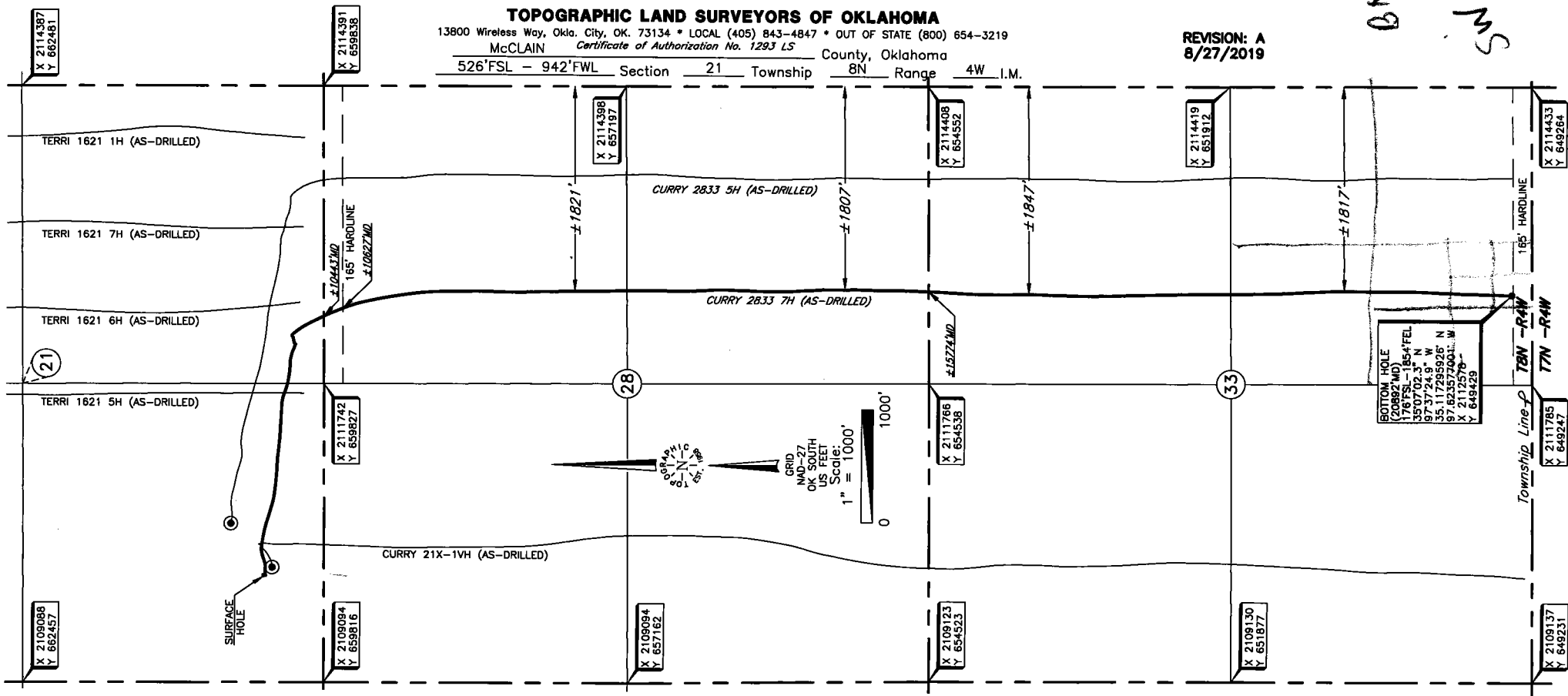
SEC	TWP	RGE	COUNTY
33	8N	4W	MCCLAIN
Spot Location	SW 1/4	SE 1/4	SW 1/4
Depth of Deviation	9,890	Radius of Turn	1,267
Measured Total Depth	20,892	Direction	182
		Total Length	9,735
		BHL From Lease, Unit, or Property Line:	176

LATERAL #2

SEC	TWP	RGE	COUNTY
Spot Location	1/4	1/4	1/4
Depth of Deviation	Radius of Turn	Direction	Total Length
Measured Total Depth	True Vertical Depth	BHL From Lease, Unit, or Property Line:	

LATERAL #3

SEC	TWP	RGE	COUNTY
Spot Location	1/4	1/4	1/4
Depth of Deviation	Radius of Turn	Direction	Total Length
Measured Total Depth	True Vertical Depth	BHL From Lease, Unit, or Property Line:	



Operator: EOG RESOURCES, INC.

Lease Name: CURRY 2833

Well No.: 7H

Topography & Vegetation Loc. fell in pasture; ±110' NW of existing well.

Good Drill Site? Yes

Reference Stakes or Alternate Location  
Stakes Set None

Best Accessibility to Location From South off county road.

Distance & Direction  
from Hwy Jct or Town From Jct. of St. Hwy 9 and US Hwy 62 go ±2.5 mi. SW on  
US Hwy 62, then ±0.25 mi. South to the SW Cor. of Sec. 21-T8N-R4W.

DATUM: NAD-27

LAT: 35°08'50.3\"

LONG: 97°37'55.0\"

LAT: 35.147316733\"

LONG: 97.631946290\"

STATE PLANE

COORDINATES: (US Feet)

ZONE: OK SOUTH

X: 2110035

Y: 660346

(This information was  
gathered with a GPS receiver  
with ±1 foot Horiz./Vert. accuracy)

Date of Drawing: Aug. 27, 2019  
Project # 123229D Date Staked: Mar. 21, 2019 AL

## FINAL AS-DRILLED PLAT

AS-DRILLED INFORMATION  
FURNISHED BY EOG RESOURCES, INC.