

Oklahoma Corporation Commission
Oil & Gas Conservation Division
Post Office Box 52000
Oklahoma City, Oklahoma 73152-2000
Rule 165: 10-3-25

Form 1002A

API No.: 35047244710001

Completion Report

Spud Date: August 02, 2009

OTC Prod. Unit No.:

Drilling Finished Date: August 10, 2009

Amended

1st Prod Date: August 19, 2009

Amend Reason: RECOMPLETION

Completion Date: August 18, 2009

Recomplete Date: October 18, 2018

Drill Type: STRAIGHT HOLE

Well Name: KISNER 57

Purchaser/Measurer:

Location: GARFIELD 19 22N 3W
NE SW SE NW
453 FSL 1733 FWL of 1/4 SEC
Derrick Elevation: 0 Ground Elevation: 1072

First Sales Date:

Operator: M M ENERGY INC 19118
PO BOX 21904
13927 QUAIL POINTE DR
OKLAHOMA CITY, OK 73156-1904

Completion Type		Location Exception		Increased Density	
	Single Zone	Order No		Order No	
	Multiple Zone	There are no Location Exception records to display.		There are no Increased Density records to display.	
X	Commingled				

Casing and Cement							
Type	Size	Weight	Grade	Feet	PSI	SAX	Top of CMT
SURFACE	8 5/8	26	J	322		220	SURFACE
PRODUCTION	5 1/2	15		4446		170	3500

Liner								
Type	Size	Weight	Grade	Length	PSI	SAX	Top Depth	Bottom Depth
There are no Liner records to display.								

Total Depth: 4446

Packer	
Depth	Brand & Type
There are no Packer records to display.	

Plug	
Depth	Plug Type
There are no Plug records to display.	

Initial Test Data

Test Date	Formation	Oil BBL/Day	Oil-Gravity (API)	Gas MCF/Day	Gas-Oil Ratio Cu FT/BBL	Water BBL/Day	Pumpin or Flowing	Initial Shut-In Pressure	Choke Size	Flow Tubing Pressure
Aug 18, 2009	OSWEGO	32	39	30	938	10	FLOWING	310		
Nov 07, 2018	HOGSHOOTER	22	40			20	PUMPING	450		

Completion and Test Data by Producing Formation									
Formation Name: HOGSHOOTER			Code: 405HGSR			Class: OIL			
Spacing Orders			Perforated Intervals						
Order No		Unit Size		From			To		
NONE				3930			3940		
Acid Volumes			Fracture Treatments						
1,000 GALLONS			875 BARRELS, 28,000 SAND						

Formation Name: OSWEGO			Code: 404OSWG			Class: OIL			
Spacing Orders			Perforated Intervals						
Order No		Unit Size		From			To		
NONE				4220			4230		
Acid Volumes			Fracture Treatments						
1,500 GALLONS			NONE						

Formation	Top
GARBER	2116
TONKAWA	3075
LAYTON	3684
OSWEGO	4220

Were open hole logs run? Yes
Date last log run: August 09, 2009

Were unusual drilling circumstances encountered? No
Explanation:

Other Remarks
There are no Other Remarks.

FOR COMMISSION USE ONLY	
Status: Accepted	1142188

API NO. 047-24471
OTC PROD.
UNIT NO.

(PLEASE TYPE OR USE BLACK INK ONLY)

OKLAHOMA CORPORATION COMMISSION
Oil & Gas Conservation Division
Post Office Box 52000
Oklahoma City, Oklahoma 73152-2000
Rule 165:10-3-25

RECEIVED

Form 1002A
Rev. 2009

FEB 26 2019

☐ ORIGINAL
☒ AMENDED (Reason)

Recompletion

COMPLETION REPORT

TYPE OF DRILLING OPERATION

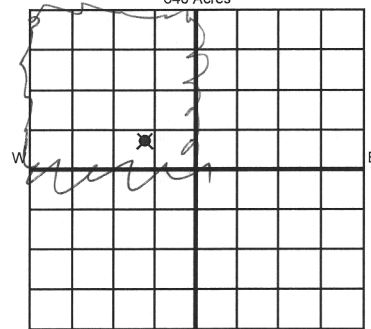
☒ STRAIGHT HOLE ☐ DIRECTIONAL HOLE ☐ HORIZONTAL HOLE
☐ SERVICE WELL

If directional or horizontal, see reverse for bottom hole location.

COUNTY Garfield SEC 19 TWP 22n RGE 3w
LEASE NAME Kisner WELL NO. 57
ne 1/4 SW 1/4 se 1/4 nw 1/4 FSL OF 1/4 SEC 453 FWL OF 1/4 SEC 1733
ELEVATION Ground 1072 Latitude (if known) Longitude (if known)
OPERATOR NAME MM Energy Inc OTC / OCC OPERATOR NO. 19118
ADDRESS P O Box 21904
CITY Oklahoma City STATE ok ZIP 73156

SPUD DATE 8/2/2009
DRLG FINISHED DATE 8/10/2009
DATE OF WELL COMPLETION 8/18/2009
1st PROD DATE 8/19/2009
RECOMP DATE 10/18/2018

OKLAHOMA CORPORATION COMMISSION



COMPLETION TYPE

☐ SINGLE ZONE
☐ MULTIPLE ZONE
Application Date
☒ COMMINGLED Application Date 02/25/19
LOCATION EXCEPTION ORDER NO.
INCREASED DENSITY ORDER NO.

CASING & CEMENT (Attach Form 1002C)

TYPE	SIZE	WEIGHT	GRADE	FEET	PSI	SAX	TOP OF CMT
CONDUCTOR							
SURFACE	8 5/8	26#	J	322 FT		220	SURFACE
INTERMEDIATE							
PRODUCTION	5 1/2	15 lb		4446 ft		170	3500
LINER							
						TOTAL DEPTH	4,446

PACKER @ _____ BRAND & TYPE _____ PLUG @ _____ TYPE _____ PLUG @ _____ TYPE _____
PACKER @ _____ BRAND & TYPE _____ PLUG @ _____ TYPE _____ PLUG @ _____ TYPE _____

COMPLETION & TEST DATA BY PRODUCING FORMATION

FORMATION	Hogshooter	Oswego				Monitor
SPACING & SPACING ORDER NUMBER	none	none				Report to FracFocus
CLASS: Oil, Gas, Dry, Inj, Disp, Comm Disp, Svc	oil	oil				
PERFORATED INTERVALS	3930-3940	4220-4230				
ACID/VOLUME	1000 gallon	1500 gallon				
FRACTURE TREATMENT (Fluids/Prop Amounts)	875 bl 28k sand	none				

☐ Min Gas Allowable (165:10-17-7) Gas Purchaser/Measurer _____
OR
☐ Oil Allowable (165:10-13-3) First Sales Date _____

INITIAL TEST DATA

INITIAL TEST DATE	11/7/2018	8/18/2009			
OIL-BBL/DAY	22	32			
OIL-GRAVITY (API)	40	39			
GAS-MCF/DAY	0	30			
GAS-OIL RATIO CU FT/BBL		938			
WATER-BBL/DAY	20	10			
PUMPING OR FLOWING	pump	flowing			
INITIAL SHUT-IN PRESSURE	450 #	310 #			
CHOKE SIZE					
FLOW TUBING PRESSURE					

A record of the formations drilled through, and pertinent remarks are presented on the reverse. I declare that I have knowledge of the contents of this report and am authorized by my organization to make this report, which was prepared by me or under my supervision and direction, with the data and facts stated herein to be true, correct, and complete to the best of my knowledge and belief.

SIGNATURE Mike Murphy 2/22/2019 405 463 3355
P O Box 21904 Oklahoma City ok 73156
ADDRESS CITY STATE ZIP mike@mmenergy.net
EMAIL ADDRESS

PLEASE TYPE OR USE BLACK INK ONLY
FORMATION RECORD

Give formation names and tops, if available, or descriptions and thickness of formations drilled through. Show intervals cored or drillstem tested.

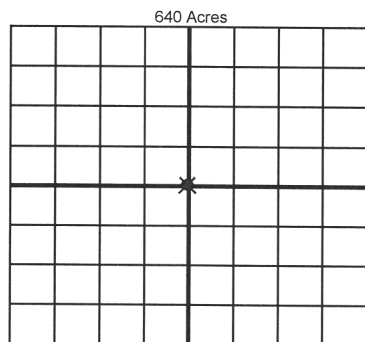
LEASE NAME Kisner WELL NO. 57

NAMES OF FORMATIONS	TOP
Garber	2,116
Tonkawa	3075
Layton	3,684
Oswego	4,220

FOR COMMISSION USE ONLY	
ITD on file <input type="checkbox"/> YES <input type="checkbox"/> NO	
APPROVED _____	DISAPPROVED _____
2) Reject Codes	

Were open hole logs run?	<u>X</u> yes <u> </u> no
Date Last log was run	<u>8/9/2009</u>
Was CO ₂ encountered?	<u> </u> yes <u>X</u> no at what depths? _____
Was H ₂ S encountered?	<u> </u> yes <u>X</u> no at what depths? _____
Were unusual drilling circumstances encountered?	<u> </u> yes <u>X</u> no
If yes, briefly explain below	

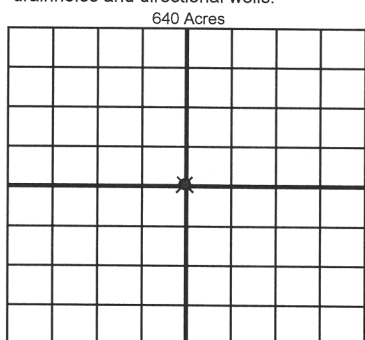
Other remarks:



If more than three drainholes are proposed, attach a separate sheet indicating the necessary information.

Direction must be stated in degrees azimuth.
Please note, the horizontal drainhole and its end point must be located within the boundaries of the lease or spacing unit.

Directional surveys are required for all drainholes and directional wells.



BOTTOM HOLE LOCATION FOR DIRECTIONAL HOLE

SEC	TWP	RGE	COUNTY
Spot Location			
1/4	1/4	1/4	1/4
Measured Total Depth		True Vertical Depth	BHL From Lease, Unit, or Property Line:

BOTTOM HOLE LOCATION FOR HORIZONTAL HOLE: (LATERALS)

LATERAL #1			
SEC	TWP	RGE	COUNTY
Spot Location			
1/4	1/4	1/4	1/4
Depth of Deviation		Radius of Turn	Direction
Measured Total Depth		True Vertical Depth	BHL From Lease, Unit, or Property Line:

LATERAL #2			
SEC	TWP	RGE	COUNTY
Spot Location			
1/4	1/4	1/4	1/4
Depth of Deviation		Radius of Turn	Direction
Measured Total Depth		True Vertical Depth	BHL From Lease, Unit, or Property Line:

LATERAL #3			
SEC	TWP	RGE	COUNTY
Spot Location			
1/4	1/4	1/4	1/4
Depth of Deviation		Radius of Turn	Direction
Measured Total Depth		True Vertical Depth	BHL From Lease, Unit, or Property Line: