

Oklahoma Corporation Commission
Oil & Gas Conservation Division
Post Office Box 52000
Oklahoma City, Oklahoma 73152-2000
Rule 165: 10-3-25

Form 1002A

API No.: 35047244360001

Completion Report

Spud Date: August 17, 2007

OTC Prod. Unit No.: 047-122774

Drilling Finished Date: August 29, 2007

Amended

1st Prod Date: January 05, 2007

Amend Reason: RECOMPLETION

Completion Date: November 15, 2007

Recomplete Date: November 28, 2018

Drill Type: STRAIGHT HOLE

Well Name: KISNER EAST 27

Purchaser/Measurer:

Location: GARFIELD 19 22N 3W
C W2 NW NE
1980 FSL 330 FWL of 1/4 SEC
Derrick Elevation: 0 Ground Elevation: 0

First Sales Date:

Operator: M M ENERGY INC 19118
PO BOX 21904
13927 QUAIL POINTE DR
OKLAHOMA CITY, OK 73156-1904

Completion Type		Location Exception		Increased Density	
X	Single Zone	Order No		Order No	
	Multiple Zone	There are no Location Exception records to display.		There are no Increased Density records to display.	
	Commingled				

Casing and Cement							
Type	Size	Weight	Grade	Feet	PSI	SAX	Top of CMT
SURFACE	9 5/8	24	J	329		250	SURFACE
PRODUCTION	7	17	J	4458		520	1219

Liner								
Type	Size	Weight	Grade	Length	PSI	SAX	Top Depth	Bottom Depth
There are no Liner records to display.								

Total Depth: 4458

Packer		Plug	
Depth	Brand & Type	Depth	Plug Type
There are no Packer records to display.		4300	CIBP

Initial Test Data										
Test Date	Formation	Oil BBL/Day	Oil-Gravity (API)	Gas MCF/Day	Gas-Oil Ratio Cu FT/BBL	Water BBL/Day	Pumpin or Flowing	Initial Shut-In Pressure	Choke Size	Flow Tubing Pressure
Nov 28, 2018	BIG LIME	18	40			600	PUMPING	400		

Completion and Test Data by Producing Formation			
Formation Name: BIG LIME		Code: 404BGLM	Class: OIL
Spacing Orders		Perforated Intervals	
Order No	Unit Size	From	To
NONE		4226	4236
Acid Volumes		Fracture Treatments	
100 GALLONS		NONE	

Formation	Top
HOOVER	2500
ELGIN	2700
TONKAWA	3250
LAYTON	3800

Were open hole logs run? Yes
Date last log run: August 29, 2007

Were unusual drilling circumstances encountered? No
Explanation:

Other Remarks
There are no Other Remarks.

FOR COMMISSION USE ONLY	
Status: Accepted	1142189

API NO. 047-24436
OTC PROD
UNIT NO. 047-122774

(PLEASE TYPE OR USE BLACK INK ONLY)

OKLAHOMA CORPORATION COMMISSION
Oil & Gas Conservation Division
Post Office Box 52000
Oklahoma City, Oklahoma 73152-2000
Rule 165:10-3-25

RECEIVED

Form 1002A
Rev. 2009

FEB 26 2019

OKLAHOMA CORPORATION
COMMISSION

ORIGINAL
☒ AMENDED (Reason)

Re-Completion

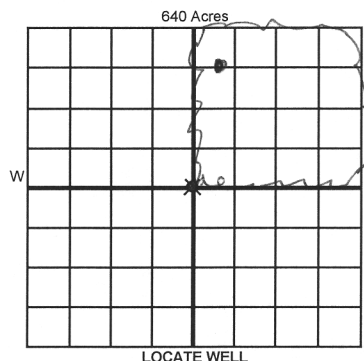
COMPLETION REPORT

TYPE OF DRILLING OPERATION

☒ STRAIGHT HOLE ☐ DIRECTIONAL HOLE ☐ HORIZONTAL HOLE
☐ SERVICE WELL

If directional or horizontal, see reverse for bottom hole location.

COUNTY	Garfield	SEC	19	TWP	22n	RGE	3w	SPUD DATE	8/17/2007
LEASE NAME	Kisner East			WELL NO.	27	DRLG FINISHED DATE	8/29/2007	DATE OF WELL COMPLETION	11/15/2007
C	1/4 W	1/4 NW	1/4 NE	1/4 FSL OF 1/4 SEC	1980	FWL OF 1/4 SEC	330	1st PROD DATE	1/5/2007
ELEVATION Derrick FL	Ground	Latitude (if known)		Longitude (if known)		RECOMP DATE	11/28/2018		
OPERATOR NAME	MM Energy Inc			OTC / OCC OPERATOR NO.	19118				
ADDRESS	P O Box 21904								
CITY	Okc	STATE	Ok	ZIP	73156				



COMPLETION TYPE

<input checked="" type="checkbox"/> SINGLE ZONE	
<input type="checkbox"/> MULTIPLE ZONE	
<input type="checkbox"/> COMMINGLED	
<input type="checkbox"/> LOCATION EXCEPTION ORDER NO.	
<input type="checkbox"/> INCREASED DENSITY ORDER NO.	

CASING & CEMENT (Attach Form 1002C)

TYPE	SIZE	WEIGHT	GRADE	FEET	PSI	SAX	TOP OF CMT
CONDUCTOR							
SURFACE	9 5/8	24	J	329		250	surface
INTERMEDIATE							
PRODUCTION	7	17	J	4458		520	1219
LINER							
						TOTAL DEPTH	4,458

PACKER @ _____ BRAND & TYPE ~~CBP~~ PLUG @ 4300 TYPE CFBP PLUG @ _____ TYPE _____
PACKER @ _____ BRAND & TYPE _____ PLUG @ _____ TYPE _____ PLUG @ _____ TYPE _____

COMPLETION & TEST DATA BY PRODUCING FORMATION

FORMATION	Big Lime					No Frac
SPACING & SPACING ORDER NUMBER	none					
CLASS: Oil, Gas, Dry, Inj, Disp, Comm Disp, Svc	oil					
PERFORATED INTERVALS	4226-4236					
ACID/VOLUME	100 gallon					
FRACTURE TREATMENT (Fluids/Prop Amounts)	none					

Min Gas Allowable (165:10-17-7) Gas Purchaser/Measurer
OR First Sales Date
Oil Allowable (165:10-13-3)

INITIAL TEST DATA

INITIAL TEST DATE	11/28/2018				
OIL-BBL/DAY	18				
OIL-GRAVITY (API)	40				
GAS-MCF/DAY	0				
GAS-OIL RATIO CU FT/BBL					
WATER-BBL/DAY	600				
PUMPING OR FLOWING	pumping				
INITIAL SHUT-IN PRESSURE	400 #				
CHOKE SIZE					
FLOW TUBING PRESSURE					

AS SUBMITTED

A record of the formations drilled through, and pertinent remarks are presented on the reverse. I declare that I have knowledge of the contents of this report and am authorized by my organization to make this report, which was prepared by me or under my supervision and direction, with the data and facts stated herein to be true, correct, and complete to the best of my knowledge and belief.

SIGNATURE	NAME (PRINT OR TYPE)	DATE	PHONE NUMBER
	mike murphy	2/22/2019	405 463 3355
P O Box 21904	okc ok 73156	mike@mmenergy.net	
ADDRESS	CITY STATE ZIP	EMAIL ADDRESS	

PLEASE TYPE OR USE BLACK INK ONLY
FORMATION RECORD

Give formation names and tops, if available, or descriptions and thickness of formations drilled through. Show intervals cored or drillstem tested.

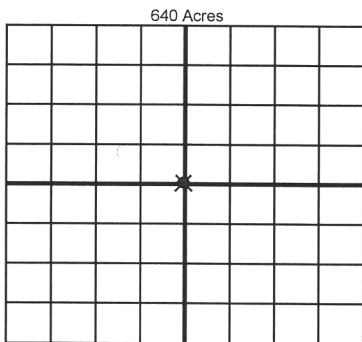
NAMES OF FORMATIONS	TOP
Hoover	2,500
Elgin	2700
Tonkawa	3,250
Layton	3,800

LEASE NAME Kisner East WELL NO. 27

FOR COMMISSION USE ONLY	
ITD on file <input type="checkbox"/> YES <input type="checkbox"/> NO	
APPROVED _____	DISAPPROVED _____
2) Reject Codes	

Were open hole logs run?	<input checked="" type="checkbox"/> yes <input type="checkbox"/> no
Date Last log was run	<u>8/29/2007</u>
Was CO ₂ encountered?	<input type="checkbox"/> yes <input checked="" type="checkbox"/> no at what depths? _____
Was H ₂ S encountered?	<input type="checkbox"/> yes <input checked="" type="checkbox"/> no at what depths? _____
Were unusual drilling circumstances encountered?	<input type="checkbox"/> yes <input checked="" type="checkbox"/> no
If yes, briefly explain below	

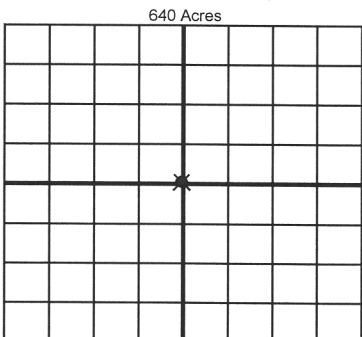
Other remarks:



If more than three drainholes are proposed, attach a separate sheet indicating the necessary information.

Direction must be stated in degrees azimuth.
Please note, the horizontal drainhole and its end point must be located within the boundaries of the lease or spacing unit.

Directional surveys are required for all drainholes and directional wells.



BOTTOM HOLE LOCATION FOR DIRECTIONAL HOLE

SEC	TWP	RGE	COUNTY
Spot Location			
1/4	1/4	1/4	1/4
Feet From 1/4 Sec Lines			FSL
Measured Total Depth			True Vertical Depth
BHL From Lease, Unit, or Property Line:			

BOTTOM HOLE LOCATION FOR HORIZONTAL HOLE: (LATERALS)

LATERAL #1			
SEC	TWP	RGE	COUNTY
Spot Location			
1/4	1/4	1/4	1/4
Feet From 1/4 Sec Lines			FSL
Depth of Deviation			Radius of Turn
Direction			Total Length
Measured Total Depth			True Vertical Depth
BHL From Lease, Unit, or Property Line:			

LATERAL #2			
SEC	TWP	RGE	COUNTY
Spot Location			
1/4	1/4	1/4	1/4
Feet From 1/4 Sec Lines			FSL
Depth of Deviation			Radius of Turn
Direction			Total Length
Measured Total Depth			True Vertical Depth
BHL From Lease, Unit, or Property Line:			

LATERAL #3			
SEC	TWP	RGE	COUNTY
Spot Location			
1/4	1/4	1/4	1/4
Feet From 1/4 Sec Lines			FSL
Depth of Deviation			Radius of Turn
Direction			Total Length
Measured Total Depth			True Vertical Depth
BHL From Lease, Unit, or Property Line:			