

Oklahoma Corporation Commission
Oil & Gas Conservation Division
Post Office Box 52000
Oklahoma City, Oklahoma 73152-2000
Rule 165: 10-3-25

Form 1002A

API No.: 35045237550000

Completion Report

Spud Date: September 22, 2018

OTC Prod. Unit No.: 045-226225-0-0000

Drilling Finished Date: November 30, 2018

1st Prod Date: October 07, 2019

Completion Date: October 07, 2019

Drill Type: HORIZONTAL HOLE

Min Gas Allowable: Yes

Well Name: LITTLE TURKEY 1708 4H

Purchaser/Measurer: DCP MIDSTREAM LP

Location: ELLIS 20 18N 24W
NE NW NW NE
250 FNL 2270 FEL of 1/4 SEC
Latitude: 36.027234043 Longitude: -99.781410552
Derrick Elevation: 0 Ground Elevation: 2269

First Sales Date: 10/09/2019

Operator: EOG RESOURCES INC 16231

3817 NW EXPRESSWAY STE 500
OKLAHOMA CITY, OK 73112-1483

Completion Type		Location Exception		Increased Density	
X	Single Zone	Order No		Order No	
	Multiple Zone	677768		673795	
	Commingled			676834	

Casing and Cement							
Type	Size	Weight	Grade	Feet	PSI	SAX	Top of CMT
SURFACE	9 5/8	36	J-55	1490		490	SURFACE
PRODUCTION	7	29	P-110	8545		430	2029

Liner								
Type	Size	Weight	Grade	Length	PSI	SAX	Top Depth	Bottom Depth
LINER	4 1/2	11.6	P-110	11514	0	860	8295	19809

Total Depth: 19809

Packer	
Depth	Brand & Type
There are no Packer records to display.	

Plug	
Depth	Plug Type
There are no Plug records to display.	

Initial Test Data

Test Date	Formation	Oil BBL/Day	Oil-Gravity (API)	Gas MCF/Day	Gas-Oil Ratio Cu FT/BBL	Water BBL/Day	Pumpin or Flowing	Initial Shut-In Pressure	Choke Size	Flow Tubing Pressure
Oct 13, 2019	MARMATON	108	42	205	1898	1861	FLOWING	400	64	301

Completion and Test Data by Producing Formation

Formation Name: MARMATON

Code: 404MRMN

Class: OIL

Spacing Orders

Order No	Unit Size
585788	640
599494	640
677503	MULTIUNIT

Perforated Intervals

From	To
9510	19792

Acid Volumes

33,000 GALLONS TOTAL ACID

Fracture Treatments

12,208,139 GALLONS TOTAL FLUID, 14,450,000 TOTAL PROPPANT

Formation	Top
MARMATON MFS	9265

Were open hole logs run? No

Date last log run:

Were unusual drilling circumstances encountered? No

Explanation:

Other Remarks

WELL NAME CHANGED FROM THAT ON APPROVED PERMIT TO DRILL TO INCLUDE "1708" IN LEASE NAME RATHER THAN WELL NUMBER. OCC - THIS DOCUMENT IS ACCEPTED BASED ON THE DATA SUBMITTED NEITHER THE FINAL LOCATION EXCEPTION NOR THE FINAL MULTIUNIT ORDERS HAVE BEEN SUBMITTED.

Lateral Holes

Sec: 8 TWP: 18N RGE: 24W County: ELLIS

NW NE NE NW

180 FNL 2075 FWL of 1/4 SEC

Depth of Deviation: 8700 Radius of Turn: 940 Direction: 355 Total Length: 10169

Measured Total Depth: 19809 True Vertical Depth: 9147 End Pt. Location From Release, Unit or Property Line: 180

FOR COMMISSION USE ONLY

1144101

Status: Accepted

RECEIVED

Form 1002A
Rev. 2009

OCT 25 2019

OKLAHOMA CORPORATION
COMMISSION

API NO. 045-23755
OTC PROD. UNIT NO. 045-226225

PLEASE TYPE OR USE BLACK INK ONLY
NOTE:

Attach copy of original 1002A
if recompletion or reentry.

OKLAHOMA CORPORATION COMMISSION
Oil & Gas Conservation Division
Post Office Box 52000
Oklahoma City, Oklahoma 73152-2000
Rule 165:10-3-25

☒ ORIGINAL
☐ AMENDED (Reason)

COMPLETION REPORT

TYPE OF DRILLING OPERATION

☐ STRAIGHT HOLE ☐ DIRECTIONAL HOLE ☒ HORIZONTAL HOLE
☐ SERVICE WELL

If directional or horizontal, see reverse for bottom hole location.

COUNTY	ELLIS	SEC	20	TWP	18N	RGE	24W	SPUD DATE	9/22/18
LEASE NAME	LITTLE TURKEY 1708				WELL NO.	4H	DATE OF WELL COMPLETION	11/30/18	
NE 1/4 NW 1/4 NW 1/4 NE 1/4	FNL 1/4 SEC	250	FEL 1/4 SEC	2,270	1st PROD DATE	10/7/19			
ELEVATION N Derrick FL	Ground	2,269	Latitude (if known)	36.02734043		Longitude (if known)	-99.78410552		
OPERATOR NAME	EOG Resources, Inc.				OTC/OCC OPERATOR NO.	16231			
ADDRESS	3817 NW Expressway, Suite 500								
CITY	Oklahoma City	STATE	OK	ZIP	73112				

640 Acres

LOCATE WELL

COMPLETION TYPE

☒ SINGLE ZONE
☐ MULTIPLE ZONE
Application Date
COMINGLED
Application Date
LOCATION EXCEPTION ORDER 677768
INCREASED DENSITY ORDER NO. 673795, 676834

CASING & CEMENT (Form 1002C must be attached)

TYPE	SIZE	WEIGHT	GRADE	FEET	PSI	SAX	TOP OF CMT
CONDUCTOR							
SURFACE	9-5/8	36	J-55	1,490		490	SURFACE
INTERMEDIATE							
PRODUCTION	7	29	P-110	8,545		430	2,029
LINER	4-1/2	11.6	P-110	TOP - 8,295 BOTTOM - 19,809		860	4,113
						TOTAL DEPTH	19,809

PACKER @ _____ BRAND & TYPE _____ PLUG @ _____ TYPE _____ PLUG @ _____ TYPE _____
PACKER @ _____ BRAND & TYPE _____ PLUG @ _____ TYPE _____ PLUG @ _____ TYPE _____

COMPLETION & TEST DATA BY PRODUCING FORMATION

FORMATION	MARMATON						
SPACING & SPACING ORDER NUMBER	640/585788, 599494 - MU/677503-10,						
CLASS: Oil, Gas, Dry, Inj, Disp, Comm Disp, Svc	oil						
PERFORATED INTERVALS	9,510 - 19,792						
ACID/VOLUME	TOTAL ACID - 33,000 GALS						
FRACTURE TREATMENT (Fluids/Prop Amounts)	TOTAL FLUID - 12,208,139 GALS						
	TOTAL PROP - 14,450,000						

Reported to FracFacts

Min Gas Allowable (165:10-17-7)

Gas Purchaser/Measurer

DCP Midstream LP

☒

OR

First Sales Date

10/9/2019

INITIAL TEST DATA

Oil Allowable (165:10-13-3)

INITIAL TEST DATE	10/13/2019						
OIL-BBL/DAY	108						
OIL-GRAVITY (API)	42						
GAS-MCF/DAY	205						
GAS-OIL RATIO CU FT/BBL	1,898						
WATER-BBL/DAY	1,861						
PUMPING OR FLOWING	FLOWING						
INITIAL SHUT-IN PRESSURE	400						
CHOKE SIZE	64						
FLOW TUBING PRESSURE	301						

AS SUBMITTED

A report of the formations drilled through, and pertinent remarks are presented on the reverse. I declare that I have knowledge of the contents of this report and am authorized by my organization to make this report, which was prepared by me or under my supervision and direction, with the data and facts stated herein to be true, correct, and complete to the best of my knowledge and belief.

Joni Reeder
SIGNATURE
3817 NW Expressway, Suite 500
ADDRESS
Oklahoma City
CITY
OK
STATE
73112
ZIP
10/25/19
DATE
405-246-3100
PHONE NUMBER
joni_reeder@eogresources.com
EMAIL ADDRESS

PLEASE TYPE OR USE BLACK INK ONLY
FORMATION RECORD

Give formation names and tops, if available, or descriptions and thickness of formations drilled through. Show intervals cored or drillstem tested.

LEASE NAME

LITTLE TURKEY 1708

WELL NO.

4H

NAMES OF FORMATIONS	TOP
MARMATON MFS MD	9,265

FOR COMMISSION USE ONLY

ITD on file ☐ YES ☐ NO

APPROVED _____ DISAPPROVED _____

2) Reject Codes

Were open hole logs run? _____ yes ☒ no

Date Last log was run _____ N/A

Was CO₂ encountered? _____ yes ☒ no at what depths? _____

Was H₂S encountered? _____ yes ☒ no at what depths? _____

Were unusual drilling circumstances encountered? _____ yes ☒ no

If yes, briefly explain below:

Other remarks:

NAME CHANGED FROM THAT ON APPROVED PERMIT TO DRILL TO INCLUDE "1708" IN LEASE NAME RATHER THAN WELL NO.

640 Acres

If more than three drainholes are proposed, attach a separate sheet indicating the necessary information.

Direction must be stated in degrees azimuth.
Please note, the horizontal drainhole and its end point must be located within the boundaries of the lease or spacing unit.

Directional surveys are required for all drainholes and directional wells.

640 Acres

BOTTOM HOLE LOCATION FOR DIRECTIONAL HOLE

SEC	TWP	RGE	COUNTY
Spot Location	1/4	1/4	1/4
Measured Total Depth	True Vertical Depth	BHL From Lease, Unit, or Property Line:	

BOTTOM HOLE LOCATION FOR HORIZONTAL HOLE: (LATERALS)

LATERAL #1

SEC	TWP	RGE	COUNTY
8	18N	24W	ELLIS
Spot Location	NW 1/4	NE 1/4	NW 1/4
Depth of Deviation	8,700	Radius of Turn	940
Measured Total Depth	19,809	True Vertical Depth	9,147
Feet From 1/4 Sec Lines	FNL 180	Direction	355
FSL	FWL 2,075	Total Length	10,169
BHL From Lease, Unit, or Property Line:	180		

LATERAL #2

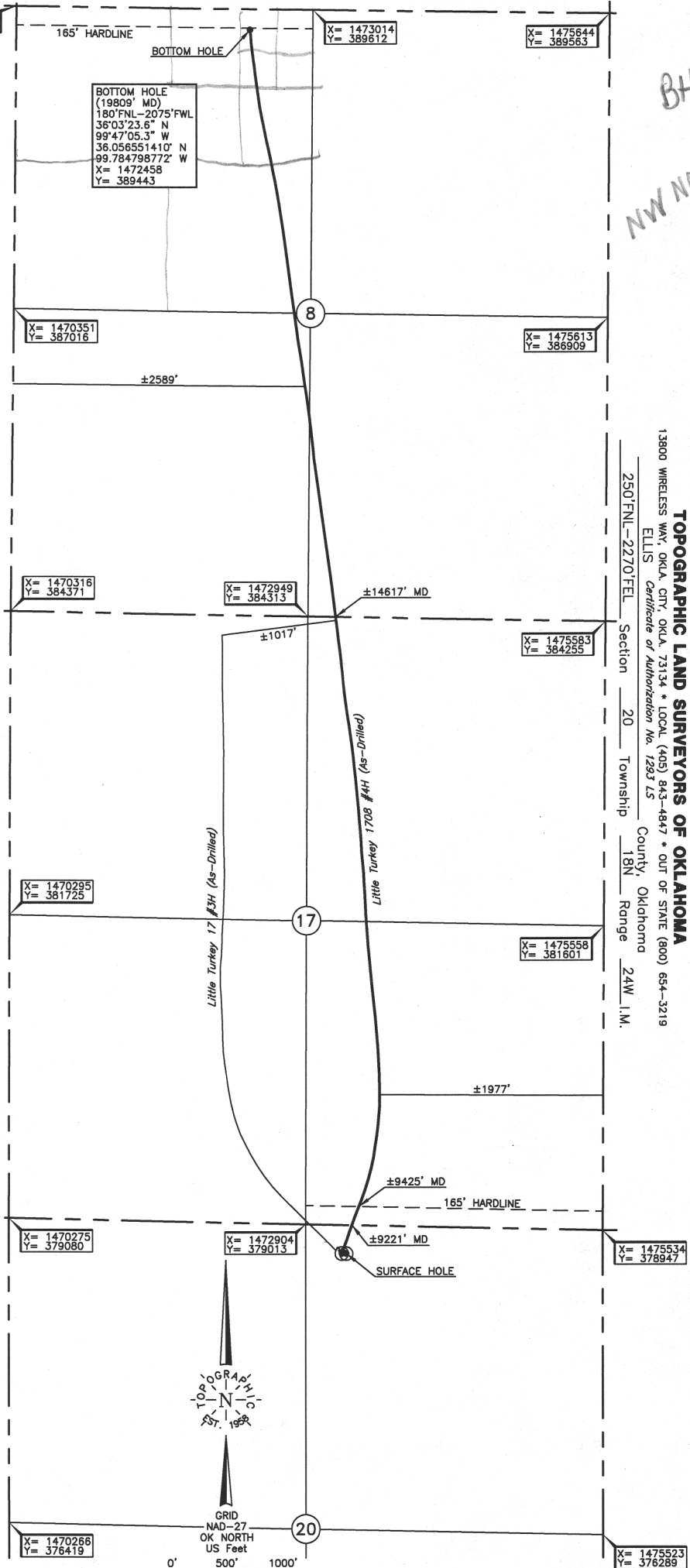
SEC	TWP	RGE	COUNTY
Spot Location	1/4	1/4	1/4
Depth of Deviation	Radius of Turn	Direction	Total Length
Measured Total Depth	True Vertical Depth	BHL From Lease, Unit, or Property Line:	

LATERAL #3

SEC	TWP	RGE	COUNTY
Spot Location	1/4	1/4	1/4
Depth of Deviation	Radius of Turn	Direction	Total Length
Measured Total Depth	True Vertical Depth	BHL From Lease, Unit, or Property Line:	

BHL
NW NE NE NW

TOPOGRAPHIC LAND SURVEYORS OF OKLAHOMA
13800 WIRELESS WAY, OKLA. CITY, OKLA. 73134 • LOCAL (405) 843-4847 • OUT OF STATE (800) 654-3219
ELLIS Certificate of Authorization No. 1293 LS
County, Oklahoma
Section 20 Township 18N Range 24W I.M.



ELEVATION:

2269' Gr. at Stake

Operator: EOG RESOURCES, INC.
Lease Name: LITTLE TURKEY 1708
Well No.: #4H

Topography & Vegetation Loc. fell in brush pasture sloping west

Good Drill Site? Yes
Reference Stakes or Alternate Location
Stakes Set None

Best Accessibility to Location From North off county road.
Distance & Direction From the junction of US Hwy. 283 and US Hwy. 60 East of Arnett, OK, go South on US Hwy. 283 for ±7.4 miles, then West ±1.5 miles to the N/4 Cor. of Sec. 20-T18N-R24W.

DATUM: NAD-27
LAT: 36°01'38.0"N
LONG: 99°46'53.1"W
LAT: 36°02'23.4043"N
LONG: 99°48'14.10552"W
STATE PLANE
COORDINATES: (US Feet)
ZONE: OK NORTH
X: 1473263
Y: 378754

(This information was gathered with a GPS receiver with ±1 foot Horiz./Vert. accuracy.)

Invoice # 287064B Date of Drawing: Nov. 30, 2018
Date Staked: Jan. 18, 2018 JP

FINAL AS-DRILLED PLAT

AS-DRILLED INFORMATION
FURNISHED BY EOG RESOURCES, INC.