

Oklahoma Corporation Commission  
Oil & Gas Conservation Division  
Post Office Box 52000  
Oklahoma City, Oklahoma 73152-2000  
Rule 165: 10-3-25

Form 1002A

API No.: 35095206670000

**Completion Report**

Spud Date: October 31, 2018

OTC Prod. Unit No.:

Drilling Finished Date: January 16, 2019

1st Prod Date:

Completion Date: August 28, 2019

**Drill Type: HORIZONTAL HOLE**

Well Name: GOODMAN 3-33H34X35

Purchaser/Measurer:

Location: MARSHALL 33 4S 5E  
SW SW SE SW  
282 FSL 1543 FWL of 1/4 SEC  
Derrick Elevation: 815 Ground Elevation: 785

First Sales Date:

Operator: XTO ENERGY INC 21003

22777 SPRINGWOODS VILLAGE PKWY  
SPRING, TX 77389-1425

Completion Type		Location Exception		Increased Density	
X	Single Zone	Order No		Order No	
	Multiple Zone	692523		689845	
	Commingled			689847	

Casing and Cement							
Type	Size	Weight	Grade	Feet	PSI	SAX	Top of CMT
CONDUCTOR	20	169	J-55	110			SURFACE
SURFACE	9 5/8	36	J-55	1981		550	SURFACE
PRODUCTION	5 1/2	20, 23	P-110	23030		2320	5850

Liner								
Type	Size	Weight	Grade	Length	PSI	SAX	Top Depth	Bottom Depth
There are no Liner records to display.								

**Total Depth: 23030**

Packer	
Depth	Brand & Type
There are no Packer records to display.	

Plug	
Depth	Plug Type
There are no Plug records to display.	

Initial Test Data
-------------------

Test Date	Formation	Oil BBL/Day	Oil-Gravity (API)	Gas MCF/Day	Gas-Oil Ratio Cu FT/BBL	Water BBL/Day	Pumpin or Flowing	Initial Shut-In Pressure	Choke Size	Flow Tubing Pressure
There are no Initial Data records to display.										
Completion and Test Data by Producing Formation										
Formation Name: WOODFORDCode: 319WDFDClass: TA										
Spacing Orders					Perforated Intervals					
Order No		Unit Size			From		To			
533420		640			9480		22897			
536299		NPT 640								
583313		640								
692521		MULTIUNIT								
Acid Volumes					Fracture Treatments					
8,000 GALLONS					50 STAGES - 663,375 BARRELS TREATED WATER, 12,046,640 POUNDS 100 MESH SAND, 4,179,900 POUNDS 40/70 SAND, 3,974,340 POUNDS CRC SAND					

Formation	Top
WOODFORD	9214

Were open hole logs run? No  
Date last log run:  
  
Were unusual drilling circumstances encountered? No  
Explanation:

Other Remarks  
689849 MULTIUNIT 686586 (EMERGENCY) 688243. WAITING ON OFFSET WELLS TO COMPLETE BEFORE PRODUCING.

Lateral Holes  
Sec: 35 TWP: 4S RGE: 5E County: MARSHALL  
SE SE NE SE  
1461 FSL 62 FEL of 1/4 SEC  
Depth of Deviation: 8600 Radius of Turn: 617 Direction: 72 Total Length: 14305  
Measured Total Depth: 23030 True Vertical Depth: 7639 End Pt. Location From Release, Unit or Property Line: 1461

FOR COMMISSION USE ONLY

Status: Accepted1144102

API NO. 095-20667  
OTC PROD.  
UNIT NO.

(PLEASE TYPE OR USE BLACK INK ONLY)

OKLAHOMA CORPORATION COMMISSION  
Oil & Gas Conservation Division  
Post Office Box 52000  
Oklahoma City, Oklahoma 73152-2000  
Rule 165:10-3-25

RECEIVED  
OCT 28 2019  
OKLAHOMA CORPORATION  
COMMISSION

Form 1002A  
Rev. 2009

☒ ORIGINAL  
☐ AMENDED (Reason) \_\_\_\_\_

COMPLETION REPORT

TYPE OF DRILLING OPERATION

☐ STRAIGHT HOLE ☐ DIRECTIONAL HOLE ☒ HORIZONTAL HOLE  
☐ SERVICE WELL

If directional or horizontal, see reverse for bottom hole location.

COUNTY Marshall SEC 33 TWP 04S RGE 05E  
LEASE NAME Goodman 3-33H34X35  
SW 1/4 SW 1/4 SE 1/4 SW 1/4 FSL OF 1/4 SEC 282 FWL OF 1/4 SEC 1543  
ELEVATION 815' Ground 785 Latitude (if known) 34.158734N Longitude 96.788054W  
OPERATOR XTO Energy Inc. OTC / OCC OPERATOR NO. 21003  
ADDRESS 210 Park Avenue, Suite 2350  
CITY Oklahoma City STATE OK ZIP 73102

SPUD DATE 10/31/2018  
DRLG FINISHED DATE 1/16/2019  
DATE OF WELL COMPLETION 8-28-2019  
1st PROD DATE  
RECOMP DATE

640 Acres  
LOCATE WELL

COMPLETION TYPE

☒ SINGLE ZONE  
☐ MULTIPLE ZONE  
Application Date I.O.  
COMINGLED Application Date 692523  
LOCATION EXCEPTION ORDER NO. 686588, 68245??  
INCREASED DENSITY ORDER NO. \*689845, 689847

CASING & CEMENT (Attach Form 1002C)

TYPE	SIZE	WEIGHT	GRADE	FEET	PSI	SAX	TOP OF CMT
CONDUCTOR	20"	169	J-55	110			Surface
SURFACE	9 5/8"	36	J-55	1981		550	Surface
INTERMEDIATE							
PRODUCTION	5 1/2"	20,23	P-110	23030		2320	5850
LINER							

PACKER @ \_\_\_\_\_ BRAND & TYPE \_\_\_\_\_ PLUG @ \_\_\_\_\_ TYPE \_\_\_\_\_ PLUG @ \_\_\_\_\_ TYPE \_\_\_\_\_  
PACKER @ \_\_\_\_\_ BRAND & TYPE \_\_\_\_\_ PLUG @ \_\_\_\_\_ TYPE \_\_\_\_\_ PLUG @ \_\_\_\_\_ TYPE \_\_\_\_\_

TOTAL DEPTH 23030'

COMPLETION & TEST DATA BY PRODUCING FORMATION

319WDFD

FORMATION	Woodford				
SPACING & SPACING ORDER NUMBER	640: 583313, 533420	(640) 536299(NPT640)	692521 (Multistage)		
CLASS: Oil, Gas, Dry, Inj, Disp, Comm Disp, Svc	TA				
PERFORATED INTERVALS	50 Stages				
	9480-22897				
ACID/VOLUME	8,000 gals				
FRACTURE TREATMENT (Fluids/Prop Amounts)	663,375 BTW Bbls Treated Water				
	12,046,640# 100 Mesh Sand				
	4,179,900# 40/70 Sand	3,974,340# CRC Sand			

☐ Min Gas Allowable (165:10-17-7)  
OR  
☐ Oil Allowable (165:10-13-3)

Gas Purchaser/Measurer  
First Sales Date

INITIAL TEST DATA

INITIAL TEST DATE	See Comments				
OIL-BBL/DAY					
OIL-GRAVITY ( API)					
GAS-MCF/DAY					
GAS-OIL RATIO CU FT/BBL					
WATER-BBL/DAY					
PUMPING OR FLOWING					
INITIAL SHUT-IN PRESSURE					
CHOKE SIZE					
FLOW TUBING PRESSURE					

AS SUBMITTED

A record of the formations drilled through, and pertinent remarks are presented on the reverse. I declare that I have knowledge of the contents of this report and am authorized by my organization to make this report, which was prepared by me or under my supervision and direction, with the data and facts stated herein to be true, correct, and complete to the best of my knowledge and belief.

SIGNATURE Debbie Waggoner 10/25/2019 405-319-3243  
210 Park Avenue, Suite 2350 Oklahoma City Ok 73102  
ADDRESS CITY STATE ZIP  
debbie\_waggoner@xtoenergy.com  
EMAIL ADDRESS

PLEASE TYPE OR USE BLACK INK ONLY  
FORMATION RECORD

Give formation names and tops, if available, or descriptions and thickness of formations drilled through. Show intervals cored or drillstem tested.

NAMES OF FORMATIONS	TOP
Woodford	9,214

LEASE NAME Goodman

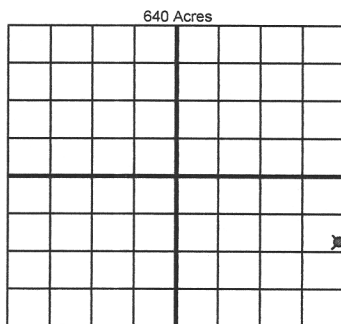
WELL NO. 3-33H34X35

FOR COMMISSION USE ONLY	
ITD on file <input type="checkbox"/> YES <input type="checkbox"/> NO	
APPROVED <input type="checkbox"/> DISAPPROVED <input type="checkbox"/>	2) Reject Codes
<div></div> <div></div> <div></div> <div></div> <div></div>	

Were open hole logs run?	<input type="checkbox"/> yes <input checked="" type="checkbox"/> no
Date Last log was run	
Was CO <sub>2</sub> encountered?	<input type="checkbox"/> yes <input checked="" type="checkbox"/> no at what depths? <div></div>
Was H <sub>2</sub> S encountered?	<input type="checkbox"/> yes <input checked="" type="checkbox"/> no at what depths? <div></div>
Were unusual drilling circumstances encountered?	<input type="checkbox"/> yes <input checked="" type="checkbox"/> no
If yes, briefly explain below.	

Other remarks: \*689849 Multi Unit 686586 (emergency) 688243

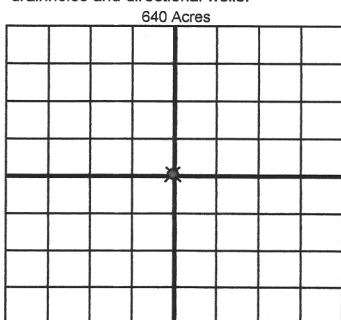
Waiting on offset wells to complete before producing.



If more than three drainholes are proposed, attach a separate sheet indicating the necessary information.

Direction must be stated in degrees azimuth. Please note, the horizontal drainhole and its end point must be located within the boundaries of the lease or spacing unit.

Directional surveys are required for all drainholes and directional wells.



BOTTOM HOLE LOCATION FOR DIRECTIONAL HOLE

SEC	TWP	RGE	COUNTY
Spot Location	1/4	1/4	1/4
Measured Total Depth	True Vertical Depth	BHL From Lease, Unit, or Property Line:	

BOTTOM HOLE LOCATION FOR HORIZONTAL HOLE: (LATERALS)

LATERAL #1			
SEC	TWP	RGE	COUNTY
35	04S	05E	Marshall
Spot Location	SE 1/4	SE 1/4	NE 1/4 SE 1/4
Depth of Deviation	8,600	Radius of Turn	617.5
Measured Total Depth	23,030'	True Vertical Depth	7639'
		Direction	72
		Total Length	14,305
		BHL From Lease, Unit, or Property Line: 1461 FSL & 62 FEL	

LATERAL #2			
SEC	TWP	RGE	COUNTY
Spot Location	1/4	1/4	1/4
Depth of Deviation	Radius of Turn	Direction	Total Length
Measured Total Depth	True Vertical Depth	BHL From Lease, Unit, or Property Line:	

LATERAL #3			
SEC	TWP	RGE	COUNTY
Spot Location	1/4	1/4	1/4
Depth of Deviation	Radius of Turn	Direction	Total Length
Measured Total Depth	True Vertical Depth	BHL From Lease, Unit, or Property Line:	