

Oklahoma Corporation Commission
Oil & Gas Conservation Division
Post Office Box 52000
Oklahoma City, Oklahoma 73152-2000
Rule 165: 10-3-25

Form 1002A

API No.: 35103247690000

Completion Report

Spud Date: April 27, 2020

OTC Prod. Unit No.: 103-226797

Drilling Finished Date: April 30, 2020

1st Prod Date: July 08, 2020

Completion Date: June 15, 2020

Drill Type: STRAIGHT HOLE

Well Name: GRACE 52

Purchaser/Measurer:

Location: NOBLE 16 24N 1W
C NW SE
1980 FSL 660 FWL of 1/4 SEC
Derrick Elevation: 1072 Ground Elevation: 1059

First Sales Date:

Operator: DONRAY PETROLEUM LLC 21690

2525 NW EXPRESSWAY STE 640
OKLAHOMA CITY, OK 73112-7230

Completion Type		Location Exception		Increased Density	
X	Single Zone	Order No		Order No	
	Multiple Zone	There are no Location Exception records to display.		There are no Increased Density records to display.	
	Commingled				

Casing and Cement								
Type		Size	Weight	Grade	Feet	PSI	SAX	Top of CMT
SURFACE		8 5/8	23		210		160	SURFACE
PRODUCTION		5.5	17		2809		250	710

Liner								
Type	Size	Weight	Grade	Length	PSI	SAX	Top Depth	Bottom Depth
There are no Liner records to display.								

Total Depth: 2809

Packer		Plug	
Depth	Brand & Type	Depth	Plug Type
There are no Packer records to display.		2809	CIBP

Initial Test Data										
Test Date	Formation	Oil BBL/Day	Oil-Gravity (API)	Gas MCF/Day	Gas-Oil Ratio Cu FT/BBL	Water BBL/Day	Pumpin or Flowing	Initial Shut-In Pressure	Choke Size	Flow Tubing Pressure
Jun 18, 2020	TONKAWA	25	40	40	1600	500	SWAB	150		

Completion and Test Data by Producing Formation			
Formation Name: TONKAWA		Code: 406TNKW	Class: OIL
Spacing Orders		Perforated Intervals	
Order No	Unit Size	From	To
NONE		2658	2672
Acid Volumes		Fracture Treatments	
750 GALLONS 12% HCL		NONE	

Formation	Top
HOOVER	2010
ENDICOTT	2340
TONKAWA	2600

Were open hole logs run? Yes
Date last log run: April 30, 2020

Were unusual drilling circumstances encountered? No
Explanation:

Other Remarks
There are no Other Remarks.

FOR COMMISSION USE ONLY	
Status: Accepted	1145419

P.O. Box 52000
Oklahoma City, OK 73152-2000
405-522-0577
occcentralprocessing@occ.ok.gov



Rev. 2009

☒ ORIGINAL
☐ AMENDED (Reason) _____

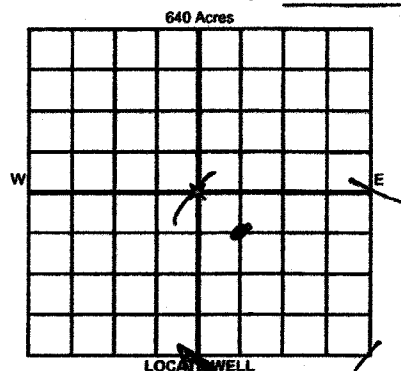
WELL COMPLETION REPORT
OAC 165:10-3-25 (PLEASE TYPE OR USE BLACK INK ONLY)

TYPE OF DRILLING OPERATION
☒ STRAIGHT HOLE ☐ DIRECTIONAL HOLE ☐ HORIZONTAL HOLE
☐ SERVICE WELL

If directional or horizontal, see reverse for bottom hole location.

COUNTY NOBLE SEC 16 TWP 24N RGE 1W
LEASE NAME Grace WELL NO. 52
1/4 C 1/4 NW 1/4 SE 1/4 FSL OF 1/4 SEC 1980 FWL OF 1/4 SEC 660
ELEVATION Derrick Fl. 1072 Ground 1059 Latitude (if known) _____ Longitude (if known) _____
OPERATOR NAME NOURAY Petroleum LLC OTC / OCC OPERATOR NO. 21690
ADDRESS 2525 N.W. Expressway #640
CITY OKC STATE OK ZIP 73112

API NO. 10324769
OTC PROD. UNIT NO. 226777



COMPLETION TYPE
☒ SINGLE ZONE
☐ MULTIPLE ZONE
Application Date _____
COMINGLED Application Date _____
LOCATION EXCEPTION ORDER NO. _____
INCREASED DENSITY ORDER NO. _____

CASING & CEMENT (Attach Form 1002C)

TYPE	SIZE	WEIGHT	GRADE	FEET	PSI	SAX	TOP OF CMT
CONDUCTOR							
SURFACE	<u>8 7/8</u>	<u>73#</u>	<u>Q</u>	<u>210'</u>		<u>160</u>	<u>Surface</u>
INTERMEDIATE							
PRODUCTION	<u>5.5</u>	<u>17#</u>		<u>2809'</u>		<u>41#</u>	<u>710'</u>
LINER						<u>250</u>	
							<u>2809'</u>

PACKER @ _____ BRAND & TYPE _____ PLUG @ 2809 TYPE CUBP PLUG @ _____ TYPE _____ TOTAL DEPTH 2809'
PACKER @ _____ BRAND & TYPE _____ PLUG @ _____ TYPE _____ PLUG @ _____ TYPE _____

COMPLETION & TEST DATA BY PRODUCING FORMATION 406 TNKW

FORMATION	SPACING & SPACING ORDER NUMBER	CLASS: Oil, Gas, Dry, Inj, Disp, Comm Disp, Svc	PERFORATED INTERVALS	ACID/VOLUME	FRACTURE TREATMENT (Fluids/Prop Amounts)
<u>Tookanwa</u>	<u>none</u>	<u>oil</u>	<u>2658 TO 2672'</u>	<u>750 Gal 12% HCL</u>	<u>NO</u>

RECEIVED

JUL 13 2020

Oklahoma Corporation
Commission

Min Gas Allowable (165:10-17-7) _____ OR _____ Gas Purchaser/Measurer _____
Oil Allowable (165:10-13-3) _____ First Sales Date _____

INITIAL TEST DATA

INITIAL TEST DATE	OIL-BBL/DAY	OIL-GRAVITY (API)	GAS-MCF/DAY	GAS-OIL RATIO CU FT/BBL	WATER-BBL/DAY	PUMPING OR FLOWING	INITIAL SHUT-IN PRESSURE	CHOKE SIZE	FLOW TUBING PRESSURE
<u>6-18-20</u>	<u>25 BPD</u>	<u>40</u>	<u>40 MCFD</u>	<u>1600</u>	<u>500 BPD</u>	<u>SWAB</u>	<u>150#</u>		

A record of the formations drilled through, and pertinent remarks are presented on the reverse. I declare that I have knowledge of the contents of this report and am authorized by my organization to make this report, which was prepared by me or under my supervision and direction, with the data and facts stated herein to be true, correct, and complete to the best of my knowledge and belief.

SIGNATURE RAY COLEMAN JR NAME (PRINT OR TYPE) RAY COLEMAN JR DATE 7-8-20 PHONE NUMBER 4184348
ADDRESS 2525 N.W. Expressway #640 CITY OKC STATE 73112 ZIP 73112 FAX 4184348

PLEASE TYPE OR USE BLACK INK ONLY
FORMATION RECORD

Give formation names and tops, if available, or descriptions and thickness of formations drilled through. Show intervals cored or drillstem tested.

NAMES OF FORMATIONS	TOP
Hoober	2010'
Enclint	2340'
Tonkawa	2600'

LEASE NAME

Gracie

WELL NO

#52

FOR COMMISSION USE ONLY

ITD on file ☐ YES ☐ NO

APPROVED

DISAPPROVED

2) Reject Codes

Were open hole logs run?

☒ yes ☐ no

Date Last log was run

4-30-20

Was CO₂ encountered?

☐ yes ☒ no at what depths?

Was H₂S encountered?

☐ yes ☒ no at what depths?

Were unusual drilling circumstances encountered?

☐ yes ☒ no

If yes, briefly explain below

Other remarks:

BOTTOM HOLE LOCATION FOR DIRECTIONAL HOLE

SEC	TWP	RGE	COUNTY
Spot Location	1/4	1/4	1/4
Measured Total Depth	True Vertical Depth		Feet From 1/4 Sec Lines
		BHL From Lease, Unit, or Property Line:	FSL
			FWL

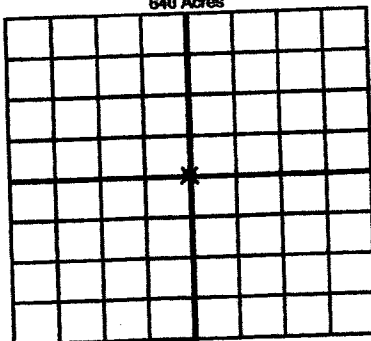
BOTTOM HOLE LOCATION FOR HORIZONTAL HOLE: (LATERALS)

LATERAL #1			
SEC	TWP	RGE	COUNTY
Spot Location	1/4	1/4	1/4
Depth of Deviation	Radius of Turn	Direction	Total Length
Measured Total Depth	True Vertical Depth		BHL From Lease, Unit, or Property Line:
			FSL
			FWL

LATERAL #2			
SEC	TWP	RGE	COUNTY
Spot Location	1/4	1/4	1/4
Depth of Deviation	Radius of Turn	Direction	Total Length
Measured Total Depth	True Vertical Depth		BHL From Lease, Unit, or Property Line:
			FSL
			FWL

LATERAL #3			
SEC	TWP	RGE	COUNTY
Spot Location	1/4	1/4	1/4
Depth of Deviation	Radius of Turn	Direction	Total Length
Measured Total Depth	True Vertical Depth		BHL From Lease, Unit, or Property Line:
			FSL
			FWL

640 Acres



If more than three drainholes are proposed, attach a separate sheet indicating the necessary information.

Direction must be stated in degrees azimuth. Please note, the horizontal drainhole and its end point must be located within the boundaries of the lease or spacing unit.

Directional surveys are required for all drainholes and directional wells.

640 Acres

