

Oklahoma Corporation Commission
Oil & Gas Conservation Division
Post Office Box 52000
Oklahoma City, Oklahoma 73152-2000
Rule 165: 10-3-25

Form 1002A

API No.: 35103247700000

Completion Report

Spud Date: May 04, 2020

OTC Prod. Unit No.: 103-226798

Drilling Finished Date: May 07, 2020

1st Prod Date: July 08, 2020

Completion Date: June 22, 2020

Drill Type: STRAIGHT HOLE

Well Name: GRACE 53

Purchaser/Measurer:

Location: NOBLE 16 24N 1W
C N2 SE
1980 FSL 1320 FWL of 1/4 SEC
Derrick Elevation: 1072 Ground Elevation: 1059

First Sales Date:

Operator: DONRAY PETROLEUM LLC 21690

2525 NW EXPRESSWAY STE 640
OKLAHOMA CITY, OK 73112-7230

Completion Type		Location Exception		Increased Density	
X	Single Zone	Order No		Order No	
	Multiple Zone	There are no Location Exception records to display.		There are no Increased Density records to display.	
	Commingled				

Casing and Cement							
Type	Size	Weight	Grade	Feet	PSI	SAX	Top of CMT
SURFACE	8 5/8	23		210		160	SURFACE
PRODUCTION	5.5	17		2815		250	900

Liner								
Type	Size	Weight	Grade	Length	PSI	SAX	Top Depth	Bottom Depth
There are no Liner records to display.								

Total Depth: 2815

Packer		Plug	
Depth	Brand & Type	Depth	Plug Type
There are no Packer records to display.		2815	CIBP

Initial Test Data										
Test Date	Formation	Oil BBL/Day	Oil-Gravity (API)	Gas MCF/Day	Gas-Oil Ratio Cu FT/BBL	Water BBL/Day	Pumpin or Flowing	Initial Shut-In Pressure	Choke Size	Flow Tubing Pressure
Jun 25, 2020	TONKAWA	20	40	30	1500	400	SWAB	80		

Completion and Test Data by Producing Formation			
Formation Name: TONKAWA		Code: 406TNKW	Class: OIL
Spacing Orders		Perforated Intervals	
Order No	Unit Size	From	To
NONE		2666	2674
Acid Volumes		Fracture Treatments	
750 GALLONS 12% HCL		NONE	

Formation	Top
HOOVER	2000
ENDICOTT	2300
TONKAWA	2600

Were open hole logs run? Yes
Date last log run: May 19, 2020

Were unusual drilling circumstances encountered? No
Explanation:

Other Remarks
There are no Other Remarks.

FOR COMMISSION USE ONLY	
Status: Accepted	1145420

P.O. Box 52000
Oklahoma City, OK 73152-2000
405-522-0577
occcentralprocessing@occ.ok.gov



Rev. 2009

☒ ORIGINAL
☐ AMENDED (Reason) _____

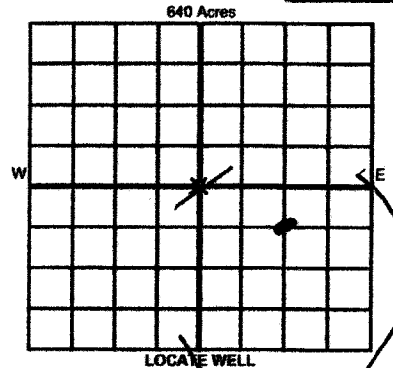
WELL COMPLETION REPORT
OAC 165:10-3-25 (PLEASE TYPE OR USE BLACK INK ONLY)

TYPE OF DRILLING OPERATION
☒ STRAIGHT HOLE ☐ DIRECTIONAL HOLE ☐ HORIZONTAL HOLE
☐ SERVICE WELL

If directional or horizontal, see reverse for bottom hole location.

COUNTY NOBLE SEC 16 TWP 24N RGE 1W
LEASE NAME Grace WELL NO. 53
1/4 C 1/4 N2 1/4 SE 1/4 FSL OF 1/4 SEC 1980 FWL OF 1/4 SEC 1320
ELEVATION 1072 Ground 1059 Latitude (if known) Longitude (if known)
OPERATOR NAME DowRay Petroleum LLC OTC/OCC OPERATOR NO. 21690
ADDRESS 2525 NW Expressway #640
CITY OKC STATE OK ZIP 73112

API NO. 6324770
OTC PROD. NO. 226798



COMPLETION TYPE

☒ SINGLE ZONE
☐ MULTIPLE ZONE
Application Date _____
☐ COMMINGLED
Application Date _____
LOCATION EXCEPTION ORDER NO. _____
INCREASED DENSITY ORDER NO. _____

CASING & CEMENT (Attach Form 1002C)

TYPE	SIZE	WEIGHT	GRADE	FEET	PSI	SAX	TOP OF CMT
CONDUCTOR							
SURFACE	<u>8 7/8</u>	<u>23#</u>		<u>210'</u>		<u>160</u>	<u>SURFACE</u>
INTERMEDIATE							
PRODUCTION	<u>7.5</u>	<u>17#</u>		<u>2815'</u>		<u>290</u>	<u>900'</u>
LINER							

PACKER @ _____ BRAND & TYPE _____ PLUG @ 2815 TYPE CMP PLUG @ _____ TYPE _____ TOTAL DEPTH 2815
PACKER @ _____ BRAND & TYPE _____ PLUG @ _____ TYPE _____ PLUG @ _____ TYPE _____

COMPLETION & TEST DATA BY PRODUCING FORMATION

406 TNKW

FORMATION	<u>Tonkawa</u>					<u>No Frac</u>
SPACING & SPACING ORDER NUMBER	<u>None</u>					
CLASS: Oil, Gas, Dry, Inj, Disp, Comm Disp, Svc	<u>Oil</u>					
PERFORATED INTERVALS	<u>2666' TO 74'</u>					
ACID VOLUME	<u>750 Gal</u>					
FRACTURE TREATMENT (Fluids/Prop Amounts)	<u>1290 HCL</u>					
	<u>NO</u>					

RECEIVED

JUL 13 2020

Oklahoma Corporation Commission

Min Gas Allowable (165:10-17-7)

Gas Purchaser/Measurer



OR

Oil Allowable (165:10-13-3)

First Sales Date

INITIAL TEST DATA

INITIAL TEST DATE	<u>6-25-20</u>				
OIL-BBL/DAY	<u>20 BPD</u>				
OIL-GRAVITY (API)	<u>40</u>				
GAS-MCF/DAY	<u>30 MCF/D</u>				
GAS-OIL RATIO CU FT/BBL	<u>1500</u>				
WATER-BBL/DAY	<u>400 BPD</u>				
PUMPING OR FLOWING	<u>2WAB</u>				
INITIAL SHUT-IN PRESSURE	<u>70 #</u>				
CHOKE SIZE					
FLOW TUBING PRESSURE					

A record of the formations drilled through, and pertinent remarks are presented on the reverse. I declare that I have knowledge of the contents of this report and am authorized by my organization to make this report, which was prepared by me or under my supervision and direction, with the data and facts stated herein to be true, correct, and complete to the best of my knowledge and belief.

SIGNATURE [Signature] NAME (PRINT OR TYPE) RAY CORBETT JR DATE 7-8-20 PHONE NUMBER 4184348
ADDRESS 2525 NW Expressway #640 CITY OKC STATE 73112 EMAIL ADDRESS Ray@DowRayPetroleum.com

Give formation names and tops, if available, or descriptions and thickness of formations drilled through. Show intervals cored or drillstem tested.

Grace

WELL NO.

53

NAMES OF FORMATIONS	TOP
Hoober	2000'
Elliott	2300'
Tonkocoy	2600'

FOR COMMISSION USE ONLY	
ITD on file	<input type="checkbox"/> YES <input type="checkbox"/> NO
APPROVED	DISAPPROVED
2) Reject Codes	

Were open hole logs run? ✓ yes no

Date Last log was run 5-19-20

Was CO₂ encountered? yes ✓ no at what depths?

Was H₂S encountered? yes ✓ no at what depths?

Were unusual drilling circumstances encountered? yes ✓ no

If yes, briefly explain below

Other remarks:	

Direction must be stated in degrees azimuth.
Please note, the horizontal drainhole and its end
point must be located within the boundaries of the
lease or spacing unit.

640 Acres

SEC	TWP	RGE	COUNTY
Spot Location			
1/4	1/4	1/4	1/4
Feet From 1/4 Sec Lines		FSL	FWL
Measured Total Depth	True Vertical Depth	BHL From Lease, Unit, or Property Line:	

LATERAL #1									
SEC	TWP	RGE	COUNTY						
Spot Location						Feet From 1/4 Sec Lines	FSL		FWL
1/4			1/4	1/4	1/4				
Depth of Deviation		Radius of Turn			Direction		Total Length		
Measured Total Depth		True Vertical Depth			BHL From Lease, Unit, or Property Line:				

SEC	TWP	RGE	COUNTY				
Spot Location				Feet From 1/4 Sec Lines	FSL		FWL
1/4		1/4		1/4		1/4	
Depth of Deviation		Radius of Turn		Direction		Total Length	
Measured Total Depth		True Vertical Depth		BHL From Lease, Unit, or Property Line:			

SEC	TWP	RGE	COUNTY
Spot Location			
1/4	1/4	1/4	1/4
Feet From 1/4 Sec Lines		FSL	FWL
Depth of Deviation	Radius of Turn	Direction	Total Length
Measured Total Depth	True Vertical Depth	BHL From Lease, Unit, or Property Line:	