

Oklahoma Corporation Commission
Oil & Gas Conservation Division
Post Office Box 52000
Oklahoma City, Oklahoma 73152-2000
Rule 165: 10-3-25

Form 1002A

API No.: 35051242830000

Completion Report

Spud Date: February 26, 2018

OTC Prod. Unit No.: 051-223725-0-0000

Drilling Finished Date: March 25, 2018

1st Prod Date: June 20, 2018

Completion Date: June 20, 2018

Drill Type: HORIZONTAL HOLE

Min Gas Allowable: Yes

Well Name: TED 2326 4H

Purchaser/Measurer: ENABLE GATHERING &
PROCESSING

First Sales Date: 06/20/2018

Location: GRADY 14 8N 5W
SW SE SW SE
250 FSL 1950 FEL of 1/4 SEC
Latitude: 35.160970553 Longitude: -97.694341605
Derrick Elevation: 0 Ground Elevation: 1290

Operator: EOG RESOURCES INC 16231

3817 NW EXPRESSWAY STE 500
OKLAHOMA CITY, OK 73112-1483

Completion Type		Location Exception		Increased Density	
X	Single Zone	Order No		Order No	
	Multiple Zone	695727		687429	
	Commingled			687430	

Casing and Cement							
Type	Size	Weight	Grade	Feet	PSI	SAX	Top of CMT
SURFACE	9 5/8	36	J-55	1477		490	SURFACE
PRODUCTION	5.5 / 7	20 / 32	P-110	21215		2740	9999

Liner								
Type	Size	Weight	Grade	Length	PSI	SAX	Top Depth	Bottom Depth
There are no Liner records to display.								

Total Depth: 21215

Packer	
Depth	Brand & Type
There are no Packer records to display.	

Plug	
Depth	Plug Type
There are no Plug records to display.	

Initial Test Data

Test Date	Formation	Oil BBL/Day	Oil-Gravity (API)	Gas MCF/Day	Gas-Oil Ratio Cu FT/BBL	Water BBL/Day	Pumpin or Flowing	Initial Shut-In Pressure	Choke Size	Flow Tubing Pressure
Jun 21, 2018	WOODFORD	143	42	259	1811	6255	FLOWING	2000	128	3526

Completion and Test Data by Producing Formation	
Formation Name: WOODFORD	Code: 319WDFD
Class: OIL	

Spacing Orders	
Order No	Unit Size
684667	640
697138	MULTIUNIT

Perforated Intervals	
From	To
10959	21087

Acid Volumes	
33,130 7.5% HCL TOTAL ACID	

Fracture Treatments	
19,908,312 TOTAL FLUID, 24,409,305 TOTAL PROPPANT	

Formation	Top
WOODFORD	10565

Were open hole logs run? No

Date last log run:

Were unusual drilling circumstances encountered? No

Explanation:

Other Remarks
OCC - RENAME WELL PER OPERATOR. OCC - FINAL LOCATION EXCEPTION ORDER 695727 NEEDS CORRECTION SHOWED WRONG SPACING ORDER.

Lateral Holes
Sec: 26 TWP: 8N RGE: 5W County: GRADY SW SE SE SW 177 FSL 2285 FWL of 1/4 SEC Depth of Deviation: 10029 Radius of Turn: 783 Direction: 174 Total Length: 10403 Measured Total Depth: 21215 True Vertical Depth: 10592 End Pt. Location From Release, Unit or Property Line: 177

FOR COMMISSION USE ONLY	
Status: Accepted	1140333

API NO. 051-24283
OTC PROD. UNIT NO. 051-223725

PLEASE TYPE OR USE BLACK INK ONLY
NOTE:

Attach copy of original 1002A
if recompletion or reentry.

OKLAHOMA CORPORATION COMMISSION
Oil & Gas Conservation Division
Post Office Box 52000
Oklahoma City, Oklahoma 73152-2000
Rule 165:10-3-25

RECEIVED
JUN 29 2018
OKLAHOMA CORPORATION
COMMISSION

Form 1002A
Rev. 2009

☒ ORIGINAL
☐ AMENDED (Reason)

COMPLETION REPORT

TYPE OF DRILLING OPERATION

☐ STRAIGHT HOLE ☐ DIRECTIONAL HOLE ☒ HORIZONTAL HOLE
☐ SERVICE WELL

If directional or horizontal, see reverse for bottom hole location.

COUNTY	GRADY	SEC	14	TWP	8N	RGE	5W
LEASE NAME	TED 2326			WELL NO.	4H		
SW 1/4 SE 1/4 SW 1/4 SE 1/4	FSL OF 1/4 SEC 250 434			FEL OF 1/4 SEC	1535 1950		
ELEVATION N Derrick	Ground	1290	Latitude (if known)		Longitude (if known)		
OPERATOR NAME	EOG Resources, Inc.			OTC/OCC OPERATOR NO.	16231		
ADDRESS	3817 NW Expressway, Suite 500						
CITY	Oklahoma City	STATE	OK	ZIP	73112		

640 Acres

LOCATE WELL

COMPLETION TYPE

☒ SINGLE ZONE
☐ MULTIPLE ZONE
Application Date
☐ COMMINGLED
Application Date
LOCATION
EXCEPTION ORDER
INCREASED DENSITY
ORDER NO. 201801029 N/A 201801029
687429 687430

CASING & CEMENT (Form 1002C must be attached)

TYPE	SIZE	WEIGHT	GRADE	FEET	PSI	SAX	TOP OF CMT
CONDUCTOR							
SURFACE	9 5/8	36	J-55	1,477		490	SURFACE
INTERMEDIATE							
PRODUCTION TAPERED	7 x 5.5	20/32	P-110	21215		2,740	9,999
LINER							

PACKER @ _____ BRAND & TYPE _____ PLUG @ _____ TYPE _____ PLUG @ _____ TYPE _____ TOTAL DEPTH 21,215
PACKER @ _____ BRAND & TYPE _____ PLUG @ _____ TYPE _____ PLUG @ _____ TYPE _____

COMPLETION & TEST DATA BY PRODUCING FORMATION

FORMATION	WOODFORD	319WDFD					
SPACING & SPACING ORDER NUMBER	640/673742, 679330	697138 F.O.					
CLASS: Oil, Gas, Dry, Inj, Disp, Comm Disp, Svc	OIL	674979 (Multiunit)					Monitor Report to Frac Focus
	10959-21087						
PERFORATED INTERVALS							
ACID/VOLUME	TOTAL ACID - 33130 7.5% HCL						
FRACTURE TREATMENT (Fluids/Prop Amounts)	Total Fluid - 19,908,312 Total Prop - 24,409,305						

Min Gas Allowable (165:10-17-7)

☒ OR
Oil Allowable (165:10-13-3)

Gas Purchaser/Measurer
First Sales Date

ENABLE GATHERING & PROCESSING
6/20/2018

INITIAL TEST DATA

INITIAL TEST DATE	6/21/2018					
OIL-BBL/DAY	143					
OIL-GRAVITY (API)	42					
GAS-MCF/DAY	259					
GAS-OIL RATIO CU FT/BBL	1811					
WATER-BBL/DAY	6255					
PUMPING OR FLOWING	FLOWING					
INITIAL SHUT-IN PRESSURE	2000					
CHOKE SIZE	128					
FLOW TUBING PRESSURE	3526					

AS SUBMITTED

A record of the formations drilled through, and pertinent remarks are presented on the reverse. I declare that I have knowledge of the contents of this report and am authorized by my organization to make this report, which was prepared by me or under my supervision and direction, with the data and facts stated herein to be true, correct, and complete to the best of my knowledge and belief.

SIGNATURE Joni Reeder
3817 NW Expressway, Suite 500 Oklahoma City OK 73112
ADDRESS CITY STATE ZIP
DATE 6/29/18 PHONE NUMBER 405-246-3100
EMAIL ADDRESS

PLEASE TYPE OR USE BLACK INK ONLY

FORMATION RECORD

Give formation names and tops, if available, or descriptions and thickness of formations drilled through. Show intervals cored or drillstem tested.

NAMES OF FORMATIONS	TOP
WOODFORD MD	10,565

LEASE NAME

WELL NO.

FOR COMMISSION USE ONLY

ITD on file ☐ YES ☐ NO

APPROVED _____ DISAPPROVED _____

2) Reject Codes

Were open hole logs run? ____ yes X no

Date Last log was run _____ N/A

Was CO₂ encountered? ____ yes X no at what depths? _____

Was H₂S encountered? ____ yes X no at what depths? _____

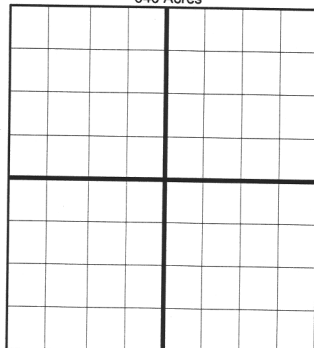
Were unusual drilling circumstances encountered? ____ yes X no

If yes, briefly explain below: _____

Other remarks:

OCC - rename well per operator

640 Acres



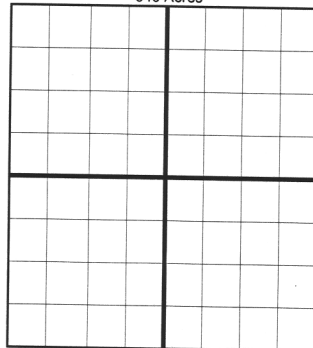
If more than three drainholes are proposed, attach a separate sheet indicating the necessary information.

Direction must be stated in degrees azimuth.

Please note, the horizontal drainhole and its end point must be located within the boundaries of the lease or spacing unit.

Directional surveys are required for all drainholes and directional wells.

640 Acres



BOTTOM HOLE LOCATION FOR DIRECTIONAL HOLE

SEC	TWP	RGE	COUNTY
Spot Location	1/4	1/4	1/4
Measured Total Depth	True Vertical Depth	Feet From 1/4 Sec Lines	FSL FWL

BOTTOM HOLE LOCATION FOR HORIZONTAL HOLE: (LATERALS)

LATERAL #1											
SEC	26	TWP	8N	RGE	5W	COUNTY GRADY					
Spot Location											
SW 1/4		SE 1/4		SE 1/4		SW 1/4		Feet From 1/4 Sec Lines	FSL 177	FWL 2285	
Depth of Deviation			10,029			Radius of Turn		783		Direction 174	Total Length 10,403
Measured Total Depth				21,215				True Vertical Depth		10,592	
BHL From Lease, Unit, or Property Line:								177			

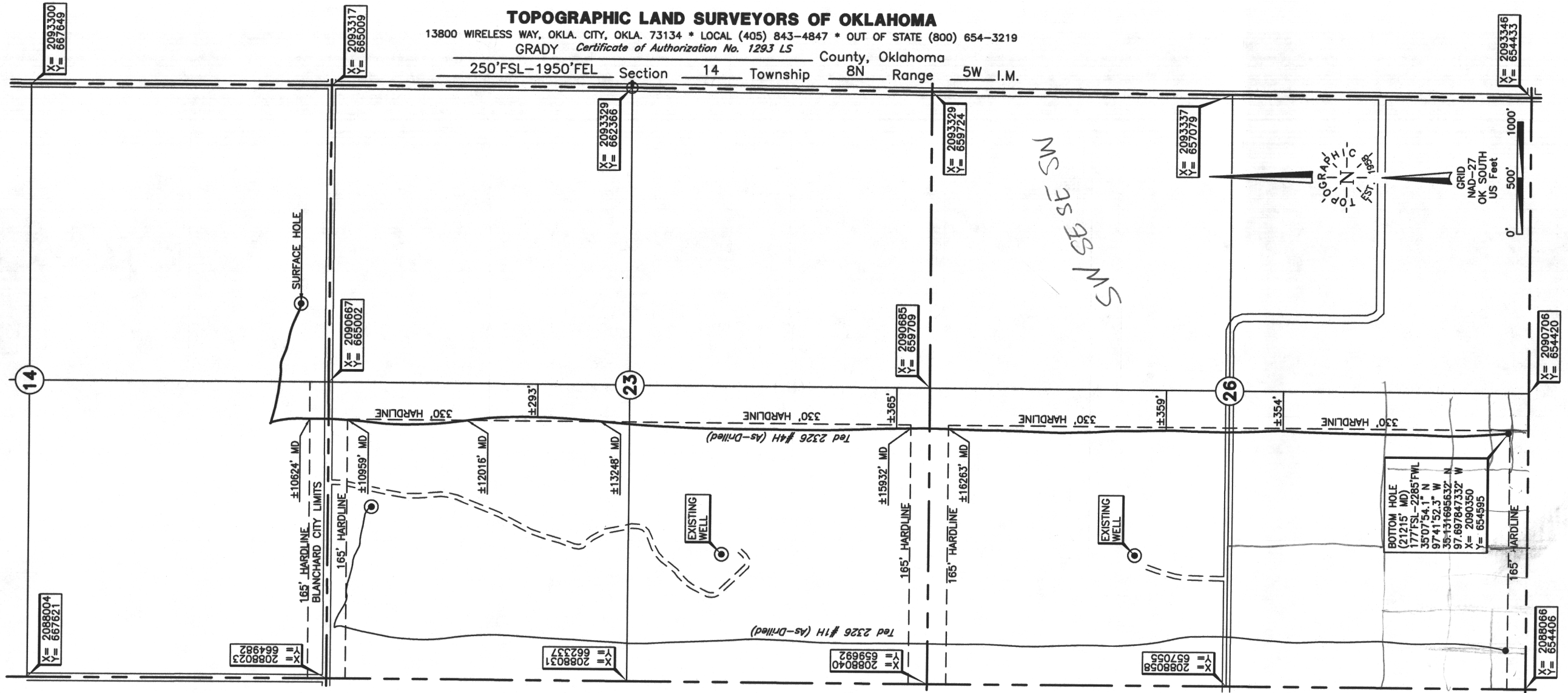
LATERAL #2

SEC	TWP	RGE	COUNTY
Spot Location	1/4	1/4	1/4
Depth of Deviation	Radius of Turn	Direction	Total Length
Measured Total Depth	True Vertical Depth	BHL From Lease, Unit, or Property Line:	

LATERAL #3

SEC	TWP	RGE	COUNTY
Spot Location	1/4	1/4	1/4
Depth of Deviation	Radius of Turn	Direction	Total Length
Measured Total Depth	True Vertical Depth	BHL From Lease, Unit, or Property Line:	

TOPOGRAPHIC LAND SURVEYORS OF OKLAHOMA
13800 WIRELESS WAY, OKLA. CITY, OKLA. 73134 * LOCAL (405) 843-4847 * OUT OF STATE (800) 654-3219
GRADY Certificate of Authorization No. 1293 LS
County, Oklahoma
250'FSL-1950'FEL Section 14 Township 8N Range 5W I.M.



ELEVATION:

1276' Gr. at Stake

Operator: EOG RESOURCES, INC.

Lease Name: TED 2326

Well No.: #4H

Topography & Vegetation Loc. fell on hilltop in grass pasture. ±214' North of fence

Good Drill Site? Yes

Reference Stakes or Alternate Location
Stakes Set None

Best Accessibility to Location From South off county road.

Distance & Direction

from Hwy Jct or Town From St. Hwy. 9/76 /US Hwy. 62/277 and the Grady-McClain county line,
go ±0.25 miles North, then West ±1 mile, then ±2 mile North to the SE Cor. of Sec. 14-T8N-R5W.

DATUM: NAD-27
LAT: 35°09'39.5"N
LONG: 97°41'39.6"W
LAT: 35.160970553°N
LONG: 97.694341605°W
STATE PLANE
COORDINATES: (US Feet)
ZONE: OK SOUTH
X: 2091366
Y: 665253

(This information was gathered with a GPS receiver with ±1 foot Horiz./Vert. accuracy.)

291627 Date of Drawing: Feb. 12, 2018
Invoice # 288609 Date Staked: Nov. 2, 2017 TR

FINAL AS-DRILLED PLAT

AS-DRILLED INFORMATION
FURNISHED BY EOG RESOURCES, INC.