

Oklahoma Corporation Commission
Oil & Gas Conservation Division
Post Office Box 52000
Oklahoma City, Oklahoma 73152-2000
Rule 165: 10-3-25

Form 1002A

API No.: 35051242820000

Completion Report

Spud Date: February 25, 2018

OTC Prod. Unit No.: 051-223720-0-0000

Drilling Finished Date: March 23, 2018

1st Prod Date: June 22, 2018

Completion Date: June 22, 2018

Drill Type: HORIZONTAL HOLE

Min Gas Allowable: Yes

Well Name: TED 2326 2H

Purchaser/Measurer: ENABLE GATHERING &
PROCESSING

First Sales Date: 06/22/2018

Location: GRADY 23 8N 5W
SW NW NE NW
406 FNL 1535 FWL of 1/4 SEC
Latitude: 35.15915451 Longitude: -97.700391904
Derrick Elevation: 0 Ground Elevation: 1290

Operator: EOG RESOURCES INC 16231

3817 NW EXPRESSWAY STE 500
OKLAHOMA CITY, OK 73112-1483

Completion Type		Location Exception		Increased Density	
X	Single Zone	Order No		Order No	
	Multiple Zone	695726		687429	
	Commingled			687430	

Casing and Cement							
Type	Size	Weight	Grade	Feet	PSI	SAX	Top of CMT
SURFACE	9 5/8	36	J-55	1510		490	SURFACE
PRODUCTION	5.5 / 7	20 / 32	P-110	20956		2660	10054

Liner								
Type	Size	Weight	Grade	Length	PSI	SAX	Top Depth	Bottom Depth
There are no Liner records to display.								

Total Depth: 20995

Packer	
Depth	Brand & Type
There are no Packer records to display.	

Plug	
Depth	Plug Type
There are no Plug records to display.	

Initial Test Data

Test Date	Formation	Oil BBL/Day	Oil-Gravity (API)	Gas MCF/Day	Gas-Oil Ratio Cu FT/BBL	Water BBL/Day	Pumpin or Flowing	Initial Shut-In Pressure	Choke Size	Flow Tubing Pressure
Jun 23, 2018	WOODFORD	162	42	72	444	6068	FLOWING	1800	128	3267

Completion and Test Data by Producing Formation

Formation Name: WOODFORD

Code: 319WDFD

Class: OIL

Spacing Orders

Order No	Unit Size
684667	640
697137	MULTIUNIT

Perforated Intervals

From	To
10770	20866

Acid Volumes

7,556 7.5% HCL TOTAL ACID

Fracture Treatments

19,189,548 TOTAL FLUID, 25,221,370 TOTAL PROPPANT

Formation	Top
WOODFORD	10499

Were open hole logs run? No

Date last log run:

Were unusual drilling circumstances encountered? No

Explanation:

Other Remarks

OCC - PER OPERATOR RENAME WELL. OCC- THE FINAL LOCATION EXCEPTION ORDER WILL NEED TO BE CORRECTED TO SHOW THE CORRECT SPACING ORDER BEING MADE EXCEPTION OF.

Lateral Holes

Sec: 26 TWP: 8N RGE: 5W County: GRADY

SE SE SW SW

174 FSL 1032 FWL of 1/4 SEC

Depth of Deviation: 10040 Radius of Turn: 703 Direction: 176 Total Length: 10252

Measured Total Depth: 20995 True Vertical Depth: 10678 End Pt. Location From Release, Unit or Property Line: 174

FOR COMMISSION USE ONLY

Status: Accepted

1140331

Give formation names and tops, if available, or descriptions and thickness of formations drilled through. Show intervals cored or drillstem tested.

WELL NO.

NAMES OF FORMATIONS	TOP
<div data-bbox="113 206 247 235">WOODFORD</div> <div data-bbox="508 206 545 235">MD</div>	<div data-bbox="609 206 678 235">10,499</div>

FOR COMMISSION USE ONLY	
ITD on file	<input type="checkbox"/> YES <input type="checkbox"/> NO
APPROVED	DISAPPROVED

[illegible]

Other remarks:

640 Acres

If more than three drainholes are proposed, attach a separate sheet indicating the necessary information.

Direction must be stated in degrees azimuth.
Please note, the horizontal drainhole and its end point must be located within the boundaries of the lease or spacing unit.

Directional surveys are required for all drainholes and directional wells.

640 Acres

A 10x10 grid representing 640 acres. The grid is divided into four 5x5 quadrants by a thick black cross. The text '640 Acres' is centered at the top of the grid.

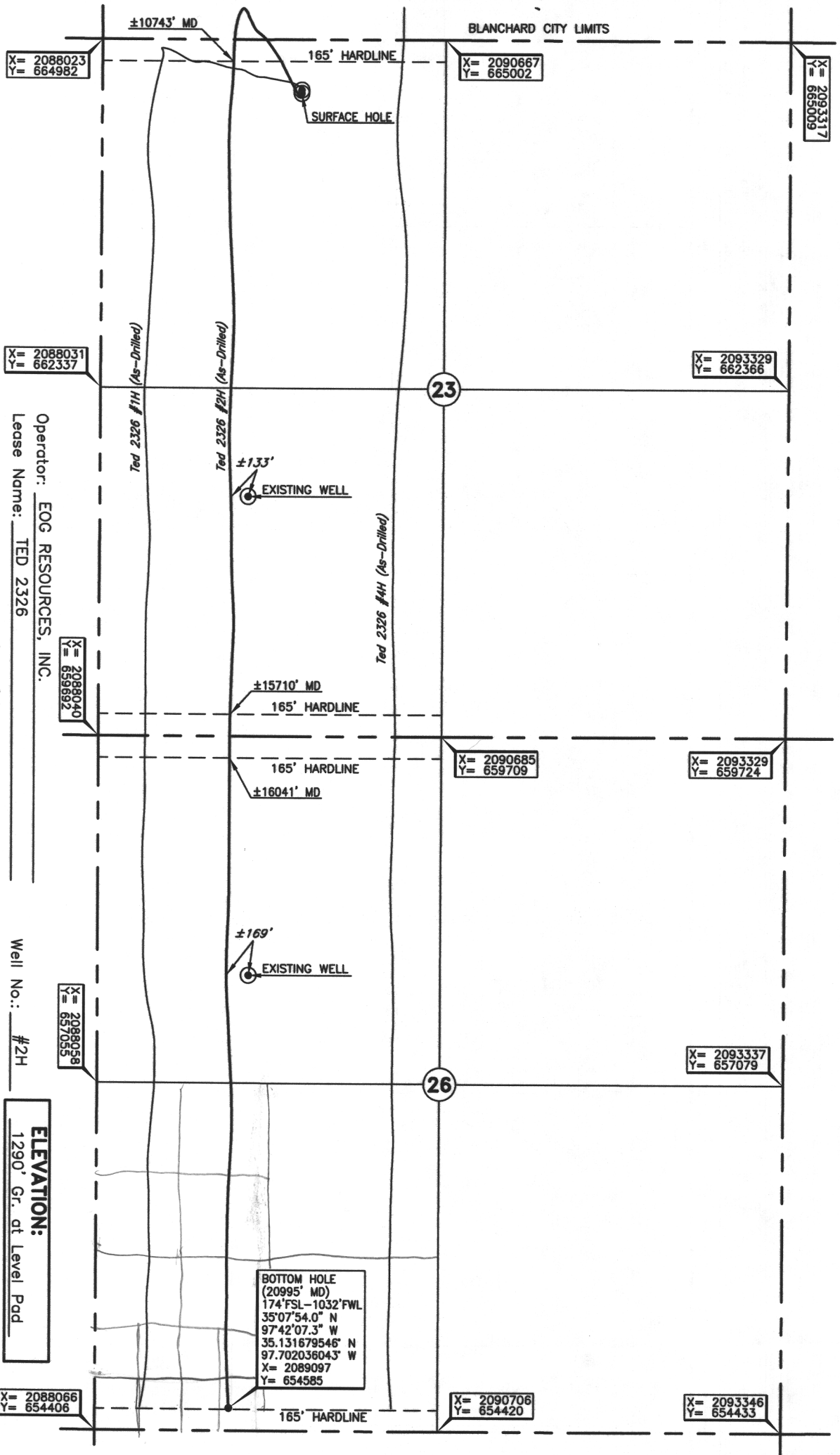
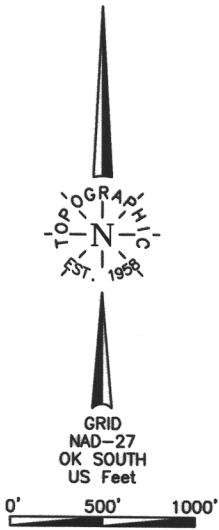
SEC	TWP	RGE	COUNTY			
Spot Location						
1/4	1/4	1/4	1/4	Feet From 1/4 Sec Lines	FSL	FWL
Measured Total Depth		True Vertical Depth		BHL From Lease, Unit, or Property Line:		

LATERAL #1											
SEC	26	TWP	8N	RGE	5W	COUNTY GRADY					
Spot Location						Feet From 1/4 Sec Lines		FSL	174	FWL	1032
SE 1/4		SE 1/4		SW 1/4		SW 1/4					
Depth of Deviation				Radius of Turn		Direction		Total Length			
10,040				703		176		10,252			
Measured Total Depth				True Vertical Depth		BHL From Lease, Unit, or Property Line:					
20,995				10,678		174					

SEC	TWP	RGE	COUNTY			
Spot Location						
1/4	1/4	1/4	1/4	Feet From 1/4 Sec Lines	FSL	FWL
Depth of Deviation	Radius of Turn			Direction	Total Length	
Measured Total Depth		True Vertical Depth		BHL From Lease, Unit, or Property Line:		

SEC	TWP	RGE	COUNTY			
Spot Location						
1/4	1/4	1/4	1/4	Feet From 1/4 Sec Lines	FSL	FWL
Depth of Deviation		Radius of Turn		Direction	Total Length	
Measured Total Depth		True Vertical Depth		BHL From Lease, Unit, or Property Line:		

County, Oklahoma
406'FNL-1535'FWL Section 23 Township 8N Range 5W I.M.



Best Accessibility to Location From North off county road.
Distance & Direction From St. Hwy. 9/76/US Hwy. 62/277 and the Grady-McClain county line, go ± 0.25 mi.
from Hwy Jct or Town North, then ± 1.0 mi. West, then ± 2.0 mi. North, then ± 1.0 mi. West to the NW Cor. of Sec. 23-T8N-R5W.

Good Drill Site? Yes

Reference Stakes or Alternate Location
Stakes Set None

Topography & Vegetation Loc. fell on level pad

Operator: EOG RESOURCES, INC.
Lease Name: TED 2326

Well No.: #2H

ELEVATION:
1290' Gr. at Level Pad

BOTTOM HOLE
(20995' MD)
174'FSL-1032'FWL
35°07'54.0" N
97°42'07.3" W
35.131679546" N
97.702036043" W
X= 2089097
Y= 654585

DATUM: NAD-27
LAT: 35°09'33.0"N
LONG: 97°42'01.4"W
LAT: 35.159154510"N
LONG: 97.700391904"W
STATE PLANE
COORDINATES: (US Feet)
ZONE: OK SOUTH
X: 2089559
Y: 664587

291653 Date of Drawing: Mar. 30, 2018
Invoice # 287505 Date Staked: Jan. 25, 2018 JP

FINAL AS-DRILLED PLAT

AS-DRILLED INFORMATION
FURNISHED BY EOG RESOURCES, INC.