

Oklahoma Corporation Commission
Oil & Gas Conservation Division
Post Office Box 52000
Oklahoma City, Oklahoma 73152-2000
Rule 165: 10-3-25

Form 1002A

API No.: 35051242910000

Completion Report

Spud Date: March 24, 2018

OTC Prod. Unit No.: 051-223723-0-0000

Drilling Finished Date: April 10, 2018

1st Prod Date: June 22, 2018

Completion Date: June 22, 2018

Drill Type: HORIZONTAL HOLE

Min Gas Allowable: Yes

Well Name: TED 2326 3H

Purchaser/Measurer: ENABLE GATHERING &
PROCESSING

First Sales Date: 06/22/2018

Location: GRADY 23 8N 5W
SW NW NE NW
431 FNL 1535 FWL of 1/4 SEC
Latitude: 35.159085951 Longitude: -97.700391476
Derrick Elevation: 0 Ground Elevation: 1290

Operator: EOG RESOURCES INC 16231

3817 NW EXPRESSWAY STE 500
OKLAHOMA CITY, OK 73112-1483

Completion Type		Location Exception		Increased Density	
X	Single Zone	Order No		Order No	
	Multiple Zone	695725		687429	
	Commingled			687430	

Casing and Cement							
Type	Size	Weight	Grade	Feet	PSI	SAX	Top of CMT
SURFACE	9 5/8	36	J-55	1517		490	SURFACE
PRODUCTION	5.5 / 7	20 / 32	P-110	21000		2845	10000

Liner								
Type	Size	Weight	Grade	Length	PSI	SAX	Top Depth	Bottom Depth
There are no Liner records to display.								

Total Depth: 21060

Packer		Plug	
Depth	Brand & Type	Depth	Plug Type
There are no Packer records to display.		There are no Plug records to display.	

Initial Test Data

Test Date	Formation	Oil BBL/Day	Oil-Gravity (API)	Gas MCF/Day	Gas-Oil Ratio Cu FT/BBL	Water BBL/Day	Pumpin or Flowing	Initial Shut-In Pressure	Choke Size	Flow Tubing Pressure
Jun 23, 2018	WOODFORD	245	42	181	739	4144	FLOWING	2000	128	3375

Completion and Test Data by Producing Formation

Formation Name: WOODFORD

Code: 319WDFD

Class: OIL

Spacing Orders

Order No	Unit Size
684667	640
695724	MULTIUNIT

Perforated Intervals

From	To
10830	20930

Acid Volumes

8,716 7.5% HCL TOTAL ACID

Fracture Treatments

19,832,452 TOTAL FLUID, 25,282,740 TOTAL PROPPANT

Formation	Top
WOODFORD	10510

Were open hole logs run? No
Date last log run:

Were unusual drilling circumstances encountered? No
Explanation:

Other Remarks

OCC - PER OPERATOR RENAME WELL. OCC - BOTH THE FINAL LOCATION EXCEPTION AND THE FINAL MULTIUNIT ORDERS NEED TO BE FIXED TO REFERENCE THE CORRECT SPACING ORDER BEING MADE EXCEPTION OF.

Lateral Holes

Sec: 26 TWP: 8N RGE: 5W County: GRADY

SE SW SE SW

175 FSL 1680 FWL of 1/4 SEC

Depth of Deviation: 10089 Radius of Turn: 594 Direction: 179 Total Length: 10377

Measured Total Depth: 21060 True Vertical Depth: 10646 End Pt. Location From Release, Unit or Property Line: 175

FOR COMMISSION USE ONLY

Status: Accepted

1140332

EMAIL ADDRESS _____

PLEASE TYPE OR USE BLACK INK ONLY
FORMATION RECORD

Give formation names and tops, if available, or descriptions and thickness of formations drilled through. Show intervals cored or drillstem tested.

LEASE NAME _____

WELL NO. _____

NAMES OF FORMATIONS	TOP
WOODFORD MD	10,510

FOR COMMISSION USE ONLY

ITD on file ☐ YES ☐ NO

APPROVED _____ DISAPPROVED _____

2) Reject Codes _____

Were open hole logs run? _____ yes ☒ no

Date Last log was run _____ N/A

Was CO₂ encountered? _____ yes ☒ no at what depths? _____

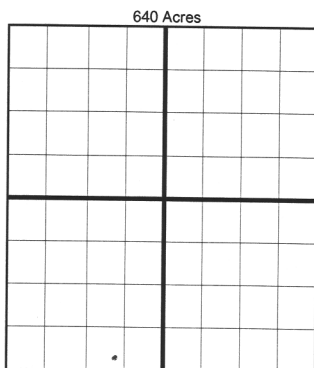
Was H₂S encountered? _____ yes ☒ no at what depths? _____

Were unusual drilling circumstances encountered? _____ yes ☒ no

If yes, briefly explain below: _____

Other remarks:

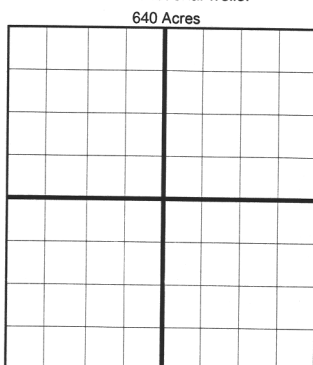
DCC - ~~was~~ rename well per operator



If more than three drainholes are proposed, attach a separate sheet indicating the necessary information.

Direction must be stated in degrees azimuth.
Please note, the horizontal drainhole and its end point must be located within the boundaries of the lease or spacing unit.

Directional surveys are required for all drainholes and directional wells.



BOTTOM HOLE LOCATION FOR DIRECTIONAL HOLE

SEC	TWP	RGE	COUNTY
Spot Location	1/4	1/4	1/4
Measured Total Depth	True Vertical Depth	BHL From Lease, Unit, or Property Line:	

BOTTOM HOLE LOCATION FOR HORIZONTAL HOLE: (LATERALS)

LATERAL #1

SEC	TWP	RGE	COUNTY
26	8N	5W	GRADY
Spot Location	SE 1/4	SW 1/4	SE 1/4
Depth of Deviation	10,089	Radius of Turn	594
Measured Total Depth	21,060	True Vertical Depth	10,646
Direction	179	Total Length	10,377
BHL From Lease, Unit, or Property Line:	175		

Per LE Exhibit

1679
1680

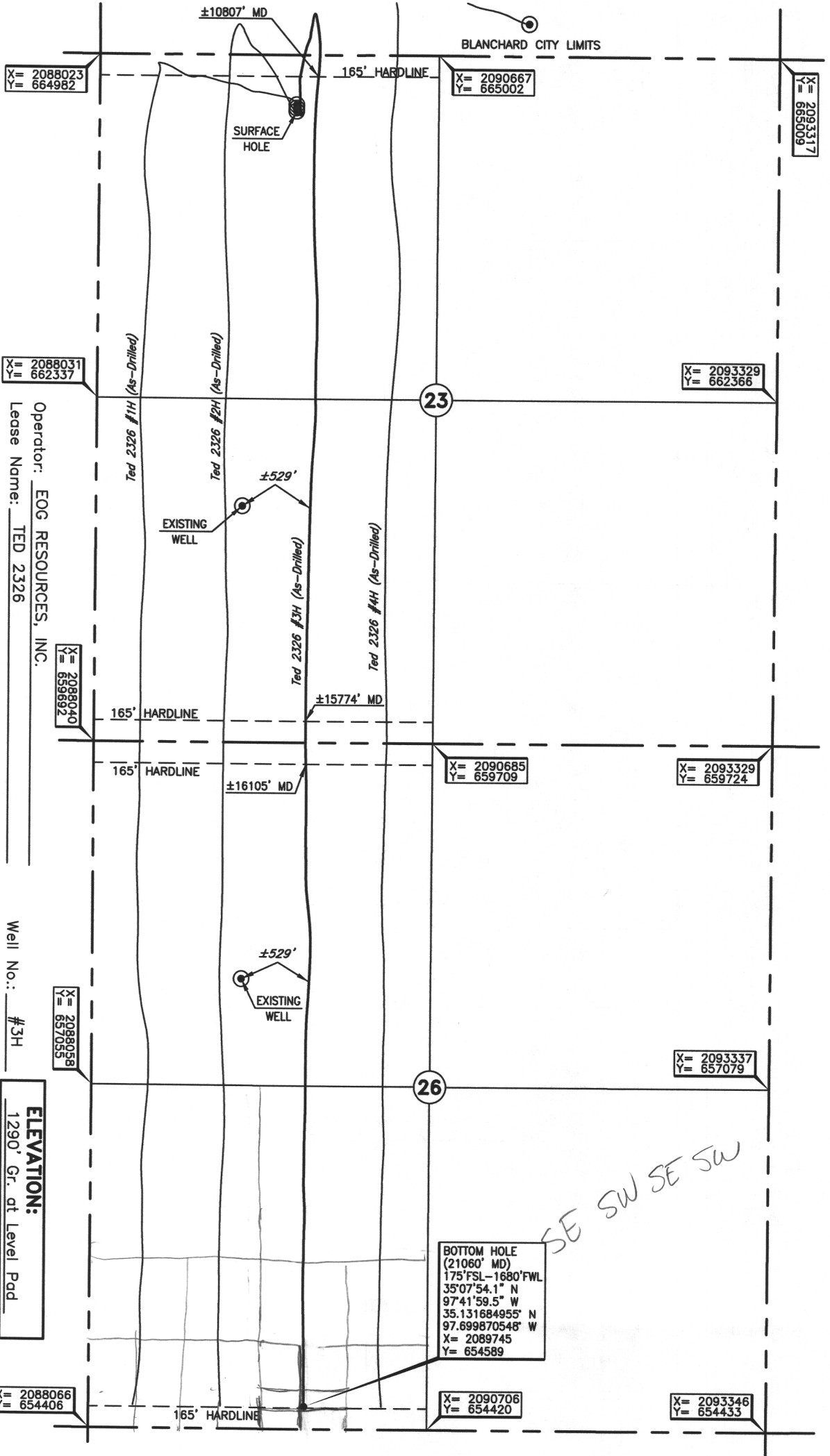
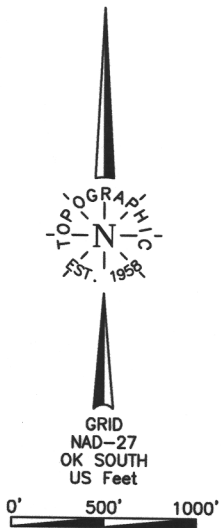
LATERAL #2

SEC	TWP	RGE	COUNTY
Spot Location	1/4	1/4	1/4
Depth of Deviation	Radius of Turn	Direction	Total Length
Measured Total Depth	True Vertical Depth	BHL From Lease, Unit, or Property Line:	

LATERAL #3

SEC	TWP	RGE	COUNTY
Spot Location	1/4	1/4	1/4
Depth of Deviation	Radius of Turn	Direction	Total Length
Measured Total Depth	True Vertical Depth	BHL From Lease, Unit, or Property Line:	

431'FNL-1535'FWL Section 23 Township 8N Range 5W I.M.



Good Drill Site? ☐ Yes ☐ No
Reference Stakes or Alternate Location
Stakes Set ☐ None ☐ Yes
Best Accessibility to Location ☐ From North off county road.
Distance & Direction ☐ From St. Hwy. 9/76/US Hwy. 62/277 and the Grady-McClain county line, go ± 0.25 mi.
North, then ± 1.0 mi. West, then ± 2.0 mi. North, then ± 1.0 mi. West to the NW Cor. of Sec. 23-T8N-R5W.

Operator: EOG RESOURCES, INC.
Lease Name: TED 2326
Topography & Vegetation ☐ Loc. fell on level pad
Well No.: #3H
ELEVATION: 1290' Gr. at Level Pad

DATUM: NAD-27
LAT: 35°09'32.7"N
LONG: 97°42'01.4"W
LAT: 35.159085951°N
LONG: 97.700391476°W
STATE PLANE
COORDINATES: (US Feet)
ZONE: OK SOUTH
X: 2089559
Y: 664562

292024 Date of Drawing: April 13, 2018
Invoice # 287505A Date Staked: Jan. 25, 2018 JP

FINAL AS-DRILLED PLAT

AS-DRILLED INFORMATION
FURNISHED BY EOG RESOURCES, INC.