

Oklahoma Corporation Commission
Oil & Gas Conservation Division
Post Office Box 52000
Oklahoma City, Oklahoma 73152-2000
Rule 165: 10-3-25

Form 1002A

API No.: 35063246910001

Completion Report

Spud Date: August 19, 2017

OTC Prod. Unit No.: 063-222797

Drilling Finished Date: September 27, 2017

1st Prod Date: December 04, 2017

Completion Date: November 25, 2017

Drill Type: HORIZONTAL HOLE

Min Gas Allowable: Yes

Well Name: ADAMS 1-36-25WH

Purchaser/Measurer: BP ENERGY

Location: HUGHES 36 9N 11E
SW NW SW SW
906 FSL 250 FWL of 1/4 SEC
Latitude: 36.8708333 Longitude: -96.0641667
Derrick Elevation: 0 Ground Elevation: 867

First Sales Date: 12/04/2017

Operator: CALYX ENERGY III LLC 23515

6120 S YALE AVE STE 1480
TULSA, OK 74136-4226

Completion Type		Location Exception		Increased Density	
X	Single Zone	Order No		Order No	
	Multiple Zone	666525		There are no Increased Density records to display.	
	Commingled				

Casing and Cement							
Type	Size	Weight	Grade	Feet	PSI	SAX	Top of CMT
CONDUCTOR	20			29		15	SURFACE
SURFACE	13 3/8	48	J-55	503		335	SURFACE
PRODUCTION	5.5	17	HCP-110	14061		1730	3915

Liner								
Type	Size	Weight	Grade	Length	PSI	SAX	Top Depth	Bottom Depth
There are no Liner records to display.								

Total Depth: 14080

Packer	
Depth	Brand & Type
There are no Packer records to display.	

Plug	
Depth	Plug Type
There are no Plug records to display.	

Initial Test Data

Test Date	Formation	Oil BBL/Day	Oil-Gravity (API)	Gas MCF/Day	Gas-Oil Ratio Cu FT/BBL	Water BBL/Day	Pumpin or Flowing	Initial Shut-In Pressure	Choke Size	Flow Tubing Pressure
Dec 22, 2017	WOODFORD			532		3205	FLOWING	98	88	139

Completion and Test Data by Producing Formation

Formation Name: WOODFORD

Code: 319WDFD

Class: GAS

Spacing Orders

Order No	Unit Size
665769	640
666524	MULTIUNIT

Perforated Intervals

From	To
5512	13889

Acid Volumes

1,897 BARRELS 15% HCL

Fracture Treatments

254,504 BARRELS FLUID, 7,397,918 POUNDS SAND

Formation	Top
WAPANUCKA	3513
UNION VALLEY	3749
CANEY SHALE	4319
MAYES	4548
WOODFORD SHALE	4813

Were open hole logs run? No

Date last log run: October 23, 2017

Were unusual drilling circumstances encountered? No

Explanation:

Other Remarks

OCC - THIS DOCUMENT IS ACCEPTED BASED ON THE DATA SUBMITTED NEITHER THE FINAL LOCATION EXCEPTION NOR THE FINAL MULTIUNIT ORDERS HAVE BEEN ISSUED.

Lateral Holes

Sec: 25 TWP: 9N RGE: 11E County: HUGHES

NW NE NW NW

70 FNL 773 FWL of 1/4 SEC

Depth of Deviation: 4103 Radius of Turn: 505 Direction: 358 Total Length: 9123

Measured Total Depth: 14080 True Vertical Depth: 4449 End Pt. Location From Release, Unit or Property Line: 70

FOR COMMISSION USE ONLY

1139019

Status: Accepted

API NO. 3506324691
OTC PROD. 063-222797
UNIT NO.

PLEASE TYPE OR USE BLACK INK ONLY

NOTE:

Attach copy of original 1002A
if recompletion or reentry.

OKLAHOMA CORPORATION COMMISSION

Oil & Gas Conservation Division
Post Office Box 52000
Oklahoma City, Oklahoma 73152-2000
Rule 165:10-3-25

RECEIVED

MAR 07 2018

OKLAHOMA CORPORATION
COMMISSION

640 Acres

☒ ORIGINAL
☐ AMENDED (Reason)

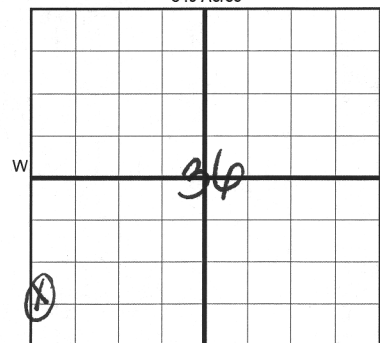
COMPLETION REPORT

TYPE OF DRILLING OPERATION

☐ STRAIGHT HOLE ☐ DIRECTIONAL HOLE ☒ HORIZONTAL HOLE
☐ SERVICE WELL

If directional or horizontal, see reverse for bottom hole location.

COUNTY	HUGHES	SEC	36	TWP	9N	RGE	11E	SPUD DATE	8/19/17
LEASE NAME	ADAMS			WELL NO.	1-36-25N11E			DRLG FINISHED DATE	9/27/17
SW 1/4 NW 1/4 SW 1/4 SW 1/4	FSL OF 1/4 SEC	906	FWL OF 1/4 SEC	250	DATE OF WELL COMPLETION	11/25/17			
ELEVATION Derrick FL	Ground	867	Latitude (if known)	36.8708333	Longtitude (if known)	-96.0641667			
OPERATOR NAME	CALYX ENERGY III, LLC			OTC/OCC OPERATOR NO.	23515				
ADDRESS	6120 S. YALE, SUITE 1480								
CITY	TULSA	STATE	OK	ZIP	74136				



COMPLETION TYPE

<input checked="" type="checkbox"/> SINGLE ZONE
<input type="checkbox"/> MULTIPLE ZONE
Application Date
COMINGLED
Application Date
LOCATION
EXCEPTION ORDER
INCREASED DENSITY
ORDER NO.

CASING & CEMENT (Form 1002C must be attached)

TYPE	SIZE	WEIGHT	GRADE	FEET	PSI	SAX	TOP OF CMT
CONDUCTOR	20"			29		15	SURFACE
SURFACE	13-3/8"	48#	J-55	503		335	SURFACE
INTERMEDIATE							
PRODUCTION	5.5"	17#	HCP110	14061		1730	3915
LINER							
						TOTAL DEPTH	14,080

PACKER @ _____ BRAND & TYPE _____ PLUG @ _____ TYPE _____ PLUG @ _____ TYPE _____
PACKER @ _____ BRAND & TYPE _____ PLUG @ _____ TYPE _____ PLUG @ _____ TYPE _____

COMPLETION & TEST DATA BY PRODUCING FORMATION

FORMATION	WOODFORD	31WDEP
SPACING & SPACING ORDER NUMBER	640/665769	F.O.
CLASS: Oil, Gas, Dry, Inj, Disp, Comm Disp, Svc	GAS	666524 (Multiunit)
PERFORATED INTERVALS	5512-13889	
ACID/VOLUME	1897 Bbls 15% HCl	
FRACTURE TREATMENT (Fluids/Prop Amounts)	254504 Bbls FLUID	
	7,397,918# Sd	

☒ Min Gas Allowable (165:10-17-7)
OR
☐ Oil Allowable (165:10-13-3)

Gas Purchaser/Measurer BP Energy
First Sales Date 12/4/2017

INITIAL TEST DATA

INITIAL TEST DATE	12/22/2017
OIL-BBL/DAY	0
OIL-GRAVITY (API)	
GAS-MCF/DAY	532
GAS-OIL RATIO CU FT/BBL	
WATER-BBL/DAY	3205
PUMPING OR FLOWING	Flowing
INITIAL SHUT-IN PRESSURE	98
CHOKE SIZE	88
FLOW TUBING PRESSURE	139

AS SUBMITTED

A record of the formations drilled through, and pertinent remarks are presented on the reverse. I declare that I have knowledge of the contents of this report and am authorized by my organization to make this report, which was prepared by me or under my supervision and direction, with the data and facts stated herein to be true, correct, and complete to the best of my knowledge and belief.

	Teresa Wade	3/2/2018	918-949-4224
SIGNATURE	NAME (PRINT OR TYPE)	DATE	PHONE NUMBER
6120 S. Yale, #1480	Tulsa OK 74136		twade@calyxenergy.com
ADDRESS	CITY STATE ZIP		EMAIL ADDRESS

PLEASE TYPE OR USE BLACK INK ONLY
FORMATION RECORD

Give formation names and tops, if available, or descriptions and thickness of formations drilled through. Show intervals cored or drillstem tested.

LEASE NAME ADAMS WELL NO. 1-36-25WH

NAMES OF FORMATIONS	TOP
WAPANUCKA LS	3,513
UNION VALLEY LS	3,749
CANEY SH	4,319
MAYES LS	4,548
WOODFORD SH	4,813

FOR COMMISSION USE ONLY

ITD on file ☐ YES ☐ NO

APPROVED _____ DISAPPROVED _____

2) Reject Codes _____

Were open hole logs run? _____ yes X no

Date Last log was run 10/23/2017

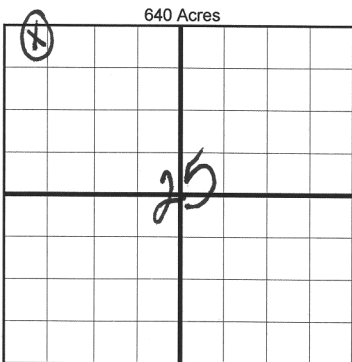
Was CO₂ encountered? _____ yes X no at what depths? _____

Was H₂S encountered? _____ yes X no at what depths? _____

Were unusual drilling circumstances encountered? _____ yes X no

If yes, briefly explain below _____

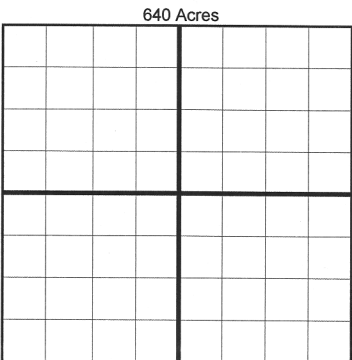
Other remarks: _____



If more than three drainholes are proposed, attach a separate sheet indicating the necessary information.

Direction must be stated in degrees azimuth.
Please note, the horizontal drainhole and its end point must be located within the boundaries of the lease or spacing unit.

Directional surveys are required for all drainholes and directional wells.



BOTTOM HOLE LOCATION FOR DIRECTIONAL HOLE

SEC	TWP	RGE	COUNTY
Spot Location	1/4	1/4	1/4
Measured Total Depth	True Vertical Depth	BHL From Lease, Unit, or Property Line:	

BOTTOM HOLE LOCATION FOR HORIZONTAL HOLE: (LATERALS)

Per LE exhibit

SEC	TWP	RGE	COUNTY
25	9N	11E	HUGHES
Spot Location	NE 1/4	NW 1/4	NW 1/4
Depth of Deviation	4,103	Radius of Turn	505
Measured Total Depth	14,080	True Vertical Depth	4,449
Feet From 1/4 Sec Lines		FNL	FWL
		358	773
Direction		Total Length	9,123
		70	

LATERAL #2

SEC	TWP	RGE	COUNTY
Spot Location	1/4	1/4	1/4
Depth of Deviation	Radius of Turn	Direction	Total Length
Measured Total Depth	True Vertical Depth	BHL From Lease, Unit, or Property Line:	

LATERAL #3

SEC	TWP	RGE	COUNTY
Spot Location	1/4	1/4	1/4
Depth of Deviation	Radius of Turn	Direction	Total Length
Measured Total Depth	True Vertical Depth	BHL From Lease, Unit, or Property Line:	

API NO. 3506324691
OTC PROD. UNIT NO. 063-222797

PLEASE TYPE OR USE BLACK INK ONLY

NOTE:

Attach copy of original 1002A if recompletion or reentry.

OKLAHOMA CORPORATION COMMISSION

Oil & Gas Conservation Division
Post Office Box 52000
Oklahoma City, Oklahoma 73152-2000
Rule 165:10-3-25

RECEIVED

MAR 07 2018

OKLAHOMA CORPORATION COMMISSION

1016EZ

☒ ORIGINAL
☐ AMENDED (Reason)

COMPLETION REPORT

TYPE OF DRILLING OPERATION

☐ STRAIGHT HOLE ☐ DIRECTIONAL HOLE ☒ HORIZONTAL HOLE
☐ SERVICE WELL

If directional or horizontal, see reverse for bottom hole location.

COUNTY	HUGHES	SEC	36	TWP	9N	RGE	11E	SPUD DATE	8/19/17
LEASE NAME	ADAMS	WELL NO.	1-36-25/17A	DRLG FINISHED DATE	9/27/17	DATE OF WELL COMPLETION	11/25/17	PROD DATE	12/4/17
SW 1/4 NW 1/4 SW 1/4 SW 1/4	FSL OF 1/4 SEC	906	FWL OF 1/4 SEC	250	RECOMP DATE				
ELEVATION Derrick FL	Ground	867	Latitude (if known)	36.8708333	Longitude (if known)	-96.0641667			
OPERATOR NAME	CALYX ENERGY III, LLC	OTC/OCC OPERATOR NO.	23515						
ADDRESS	6120 S. YALE, SUITE 1480								
CITY	TULSA	STATE	OK	ZIP	74136				

640 Acres

W E

LOCATE WELL

COMPLETION TYPE

<input checked="" type="checkbox"/> SINGLE ZONE
<input type="checkbox"/> MULTIPLE ZONE
Application Date
COMINGLED
Application Date
LOCATION
EXCEPTION ORDER
INCREASED DENSITY
ORDER NO.

CASING & CEMENT (Form 1002C must be attached)

TYPE	SIZE	WEIGHT	GRADE	FEET	PSI	SAX	TOP OF CMT
CONDUCTOR	20"			29		15	SURFACE
SURFACE	13-3/8"	48#	J-55	503		335	SURFACE
INTERMEDIATE							
PRODUCTION	5.5"	17#	HCP110	14061		1730	3915
LINER							
TOTAL DEPTH						14,080	

PACKER @ BRAND & TYPE PLUG @ TYPE PLUG @ TYPE
PACKER @ BRAND & TYPE PLUG @ TYPE PLUG @ TYPE

COMPLETION & TEST DATA BY PRODUCING FORMATION

FORMATION	WOODFORD						
SPACING & SPACING ORDER NUMBER	(5236) 640/665769						
CLASS: Oil, Gas, Dry, Inj, Disp, Comm Disp, Svc	GAS						
PERFORATED INTERVALS	5512-13889						
ACID/VOLUME	1897 Bbls 15% HCl						
FRACTURE TREATMENT (Fluids/Prop Amounts)	254504 Bbls FLUID						
	7,397,918# Sd						

Min Gas Allowable (165:10-17-7)

Gas Purchaser/Measurer

BP Energy

☒

OR

First Sales Date

12/4/2017

INITIAL TEST DATA

INITIAL TEST DATE	12/22/2017						
OIL-BBL/DAY	0						
OIL-GRAVITY (API)							
GAS-MCF/DAY	532						
GAS-OIL RATIO CU FT/BBL							
WATER-BBL/DAY	3205						
PUMPING OR FLOWING	Flowing						
INITIAL SHUT-IN PRESSURE	98						
CHOKE SIZE	88						
FLOW TUBING PRESSURE	139						

AS SUBMITTED

SCANNED

A record of the formations drilled through, and pertinent remarks are presented on the reverse. I declare that I have knowledge of the contents of this report and am authorized by my organization to make this report, which was prepared by me or under my supervision and direction, with the data and facts stated herein to be true, correct, and complete to the best of my knowledge and belief.

SIGNATURE	TERESA WADE	DATE	3/2/2018	PHONE NUMBER	918-949-4224
6120 S. Yale, #1480	Tulsa	OK	74136	twade@calyxenergy.com	
ADDRESS	CITY	STATE	ZIP	EMAIL ADDRESS	